

ASSIGNMENT / QUIZ

Subject: Introduction To Earthquake Engineering

Duration: 6 Days

Instructor: Engr Khurshid Alam

Total Marks: 30

Semester: B-Tech Civil 6TH

Course Code: CT-634

Note: Attempt all the questions.

Q.NO.(01)

(5+5)

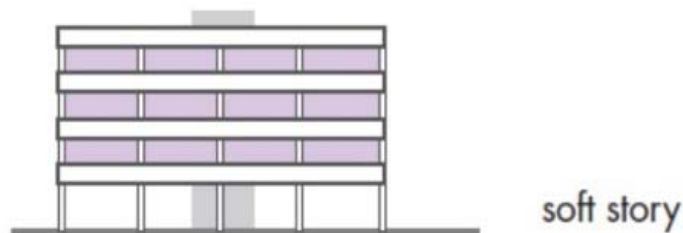
(a) What is meant by seismic waves. Discuss the various types of seismic waves with diagrams. Is primary waves are faster than secondary waves.

(b) Define seismic risk. How seismic risk is increasing day by day? Discuss in detail how seismic risk be minimized.

Q.NO.(02)

(5+5)

(a) Define soft storey effect. Explain how the soft storey effect can be minimized in the following diagram.



(b) What are the various mechanisms adopted to dissipate energy imparted to a structure by earthquakes?

Q.NO.(03)

(10)

(b) In the given diagram discuss in detail what is the effect of shear wall arrangement on the torsional resistance of building.

