

Architecture & Town Planning

Mid Term Paper(Special Case)

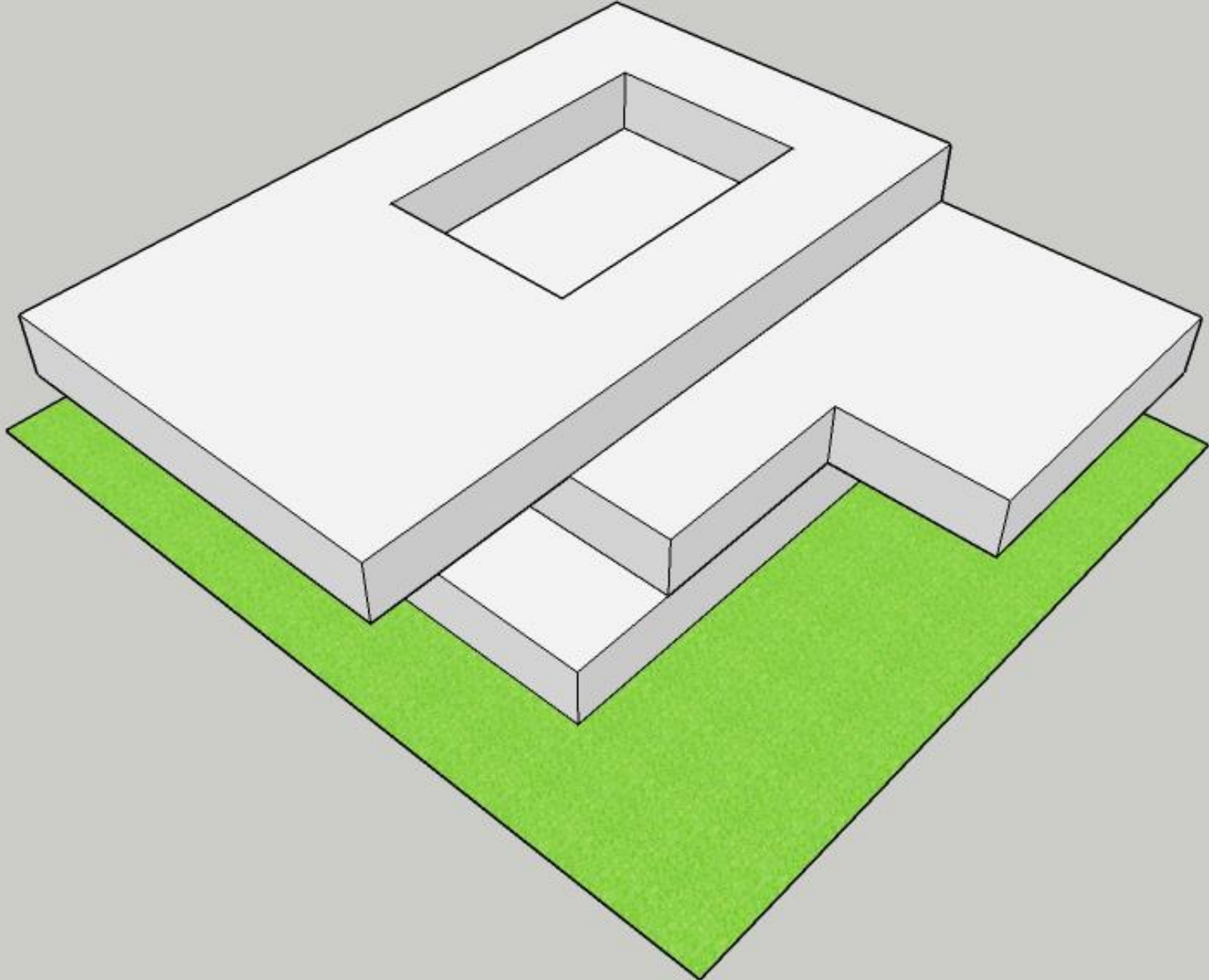
NOTE:

Attempt All Questions. Each question carry 10 Marks

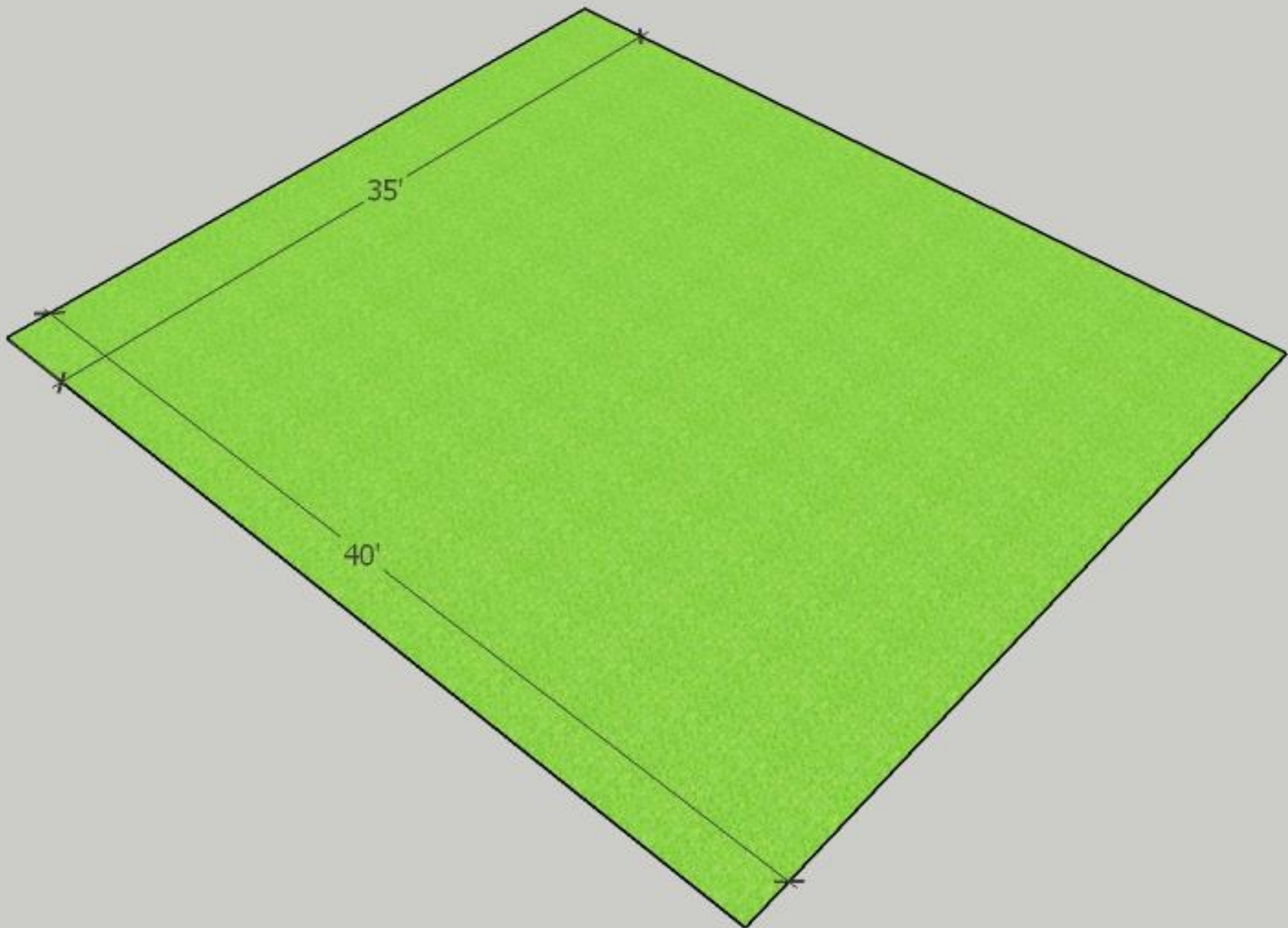
Attempt paper in Microsoft word



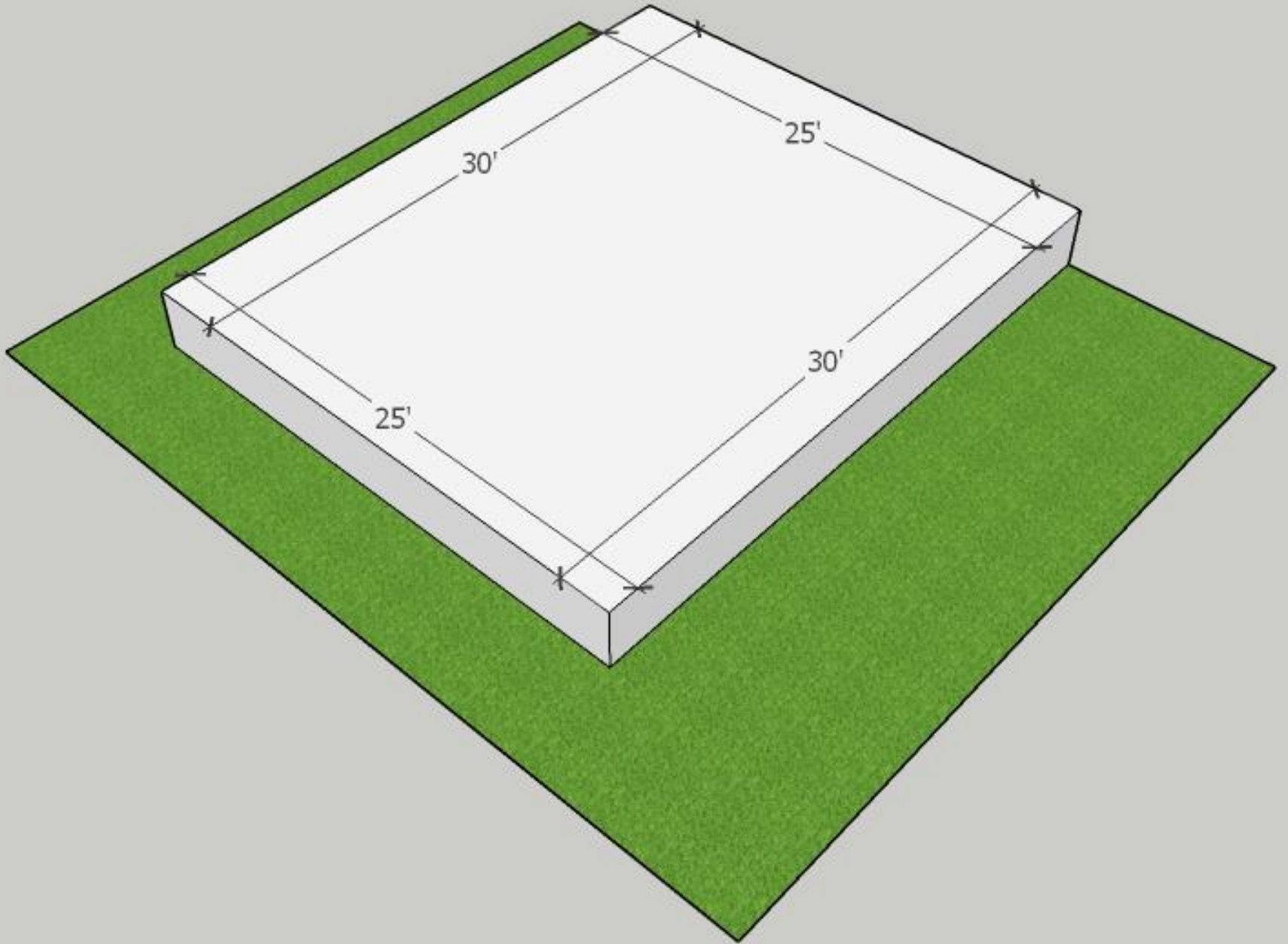
Q1 - Calculate FAR and Foot Print



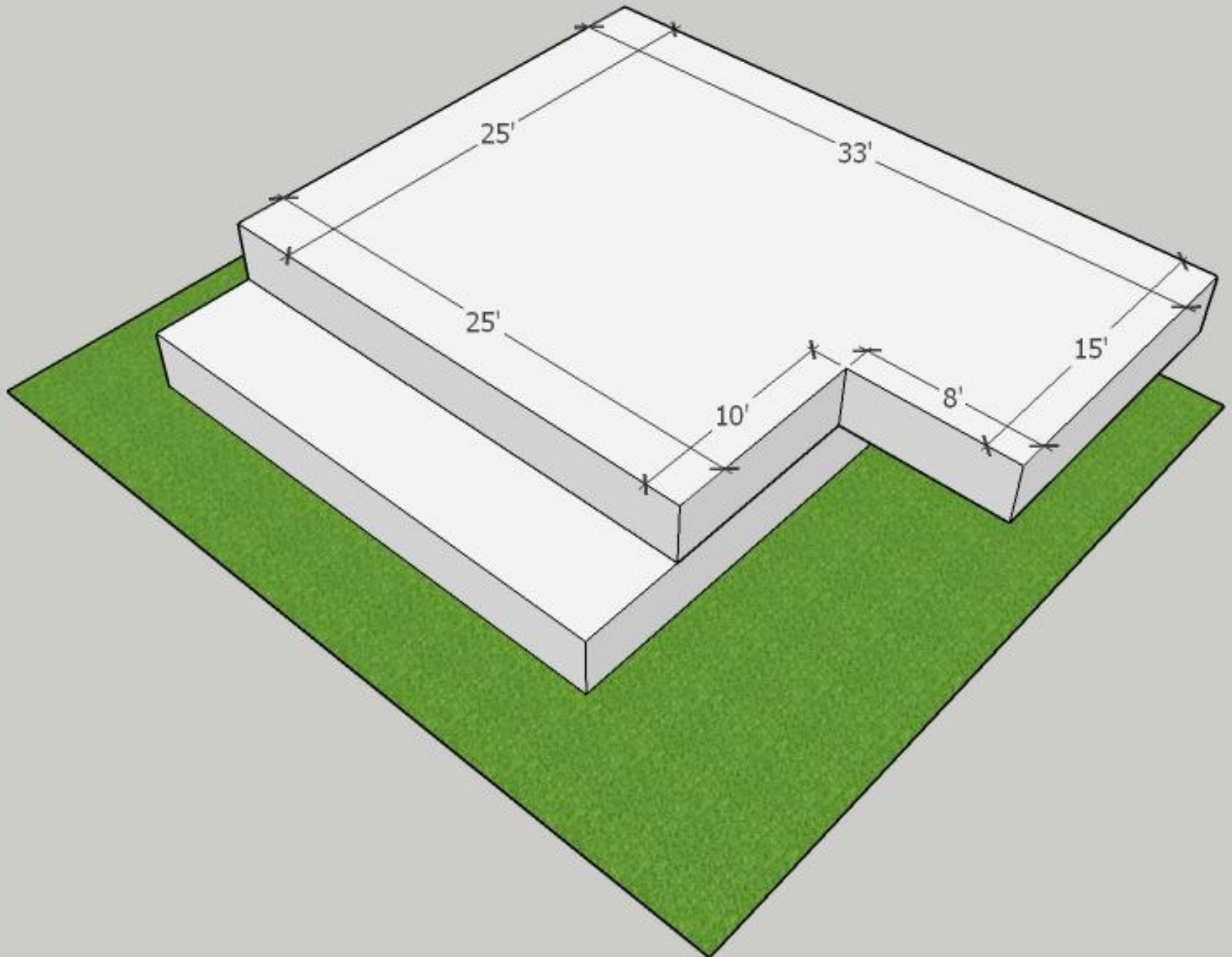
Dimensions of Plot



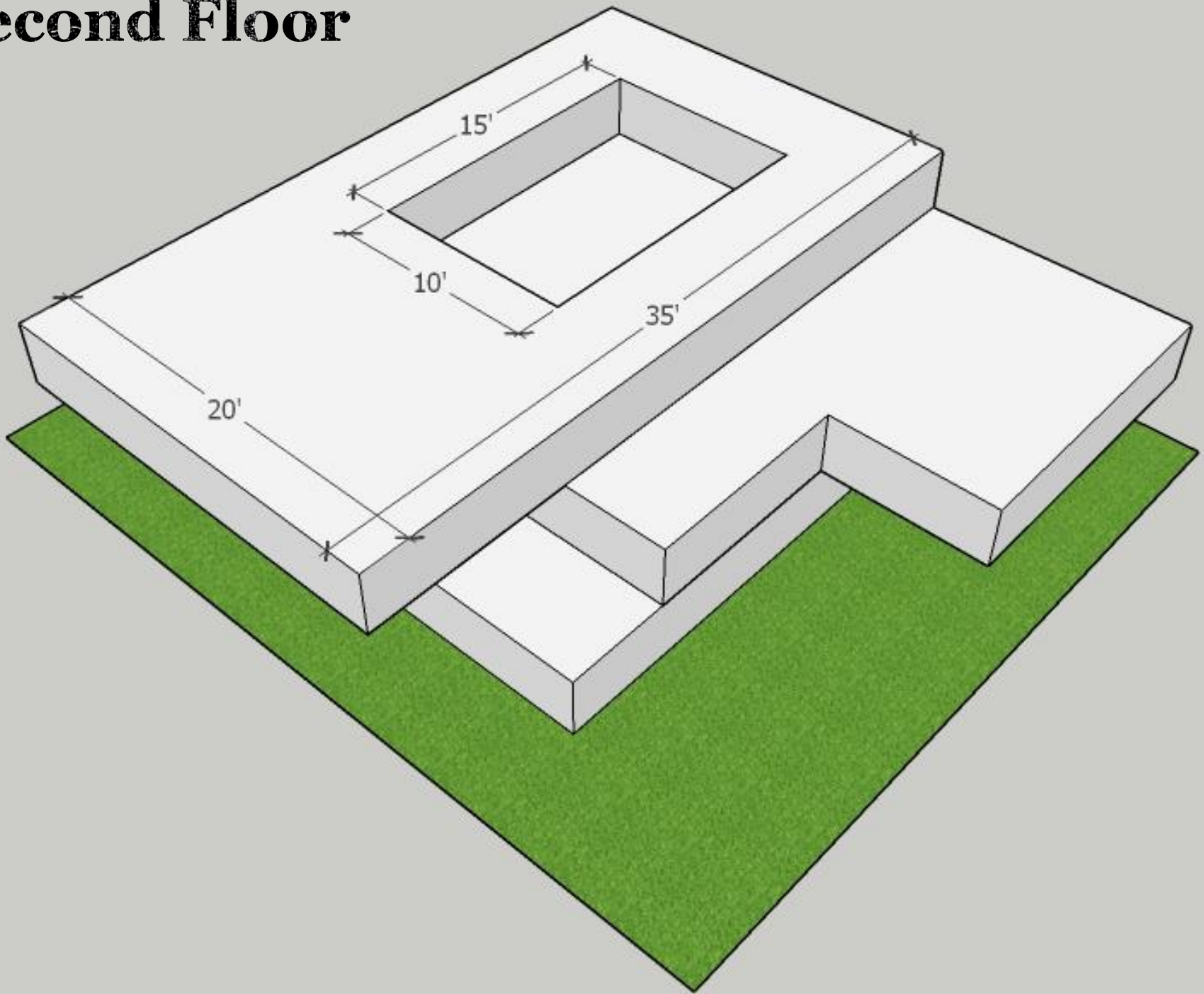
Ground Floor



First Floor

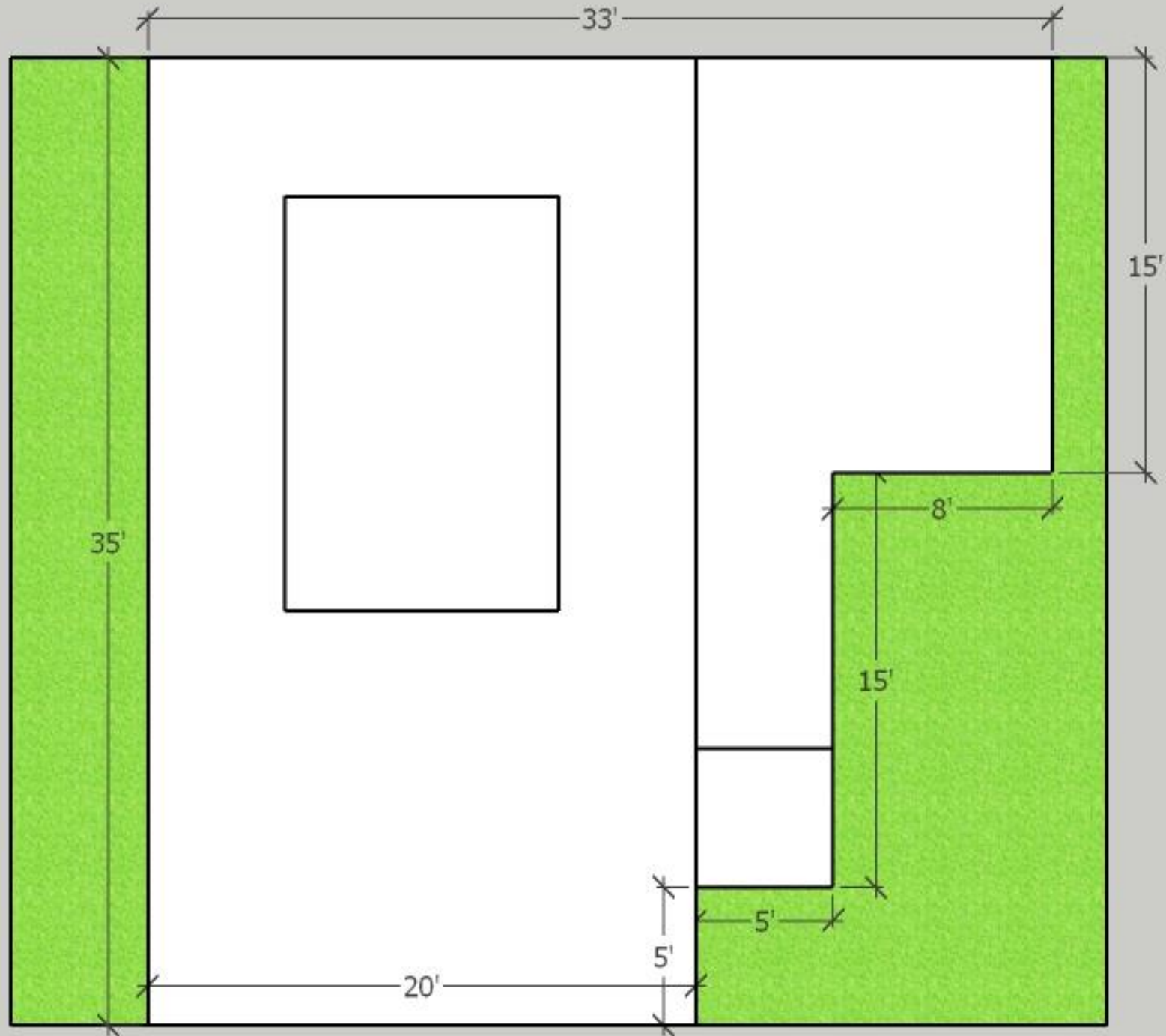


Second Floor



**T
O
P

V
I
E
W**



Q2: Analyze the site (including sun path, wind direction etc.) of your own house and then draw rough plan of your house on a piece of paper. Compare the plan and site analysis and figure out mistakes (issues) in plan of your house. Also, suggest how could these issues be solved.

Q3: What could be done to keep a house warm naturally in winters if the house is located in swat.

