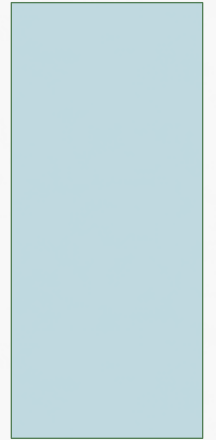
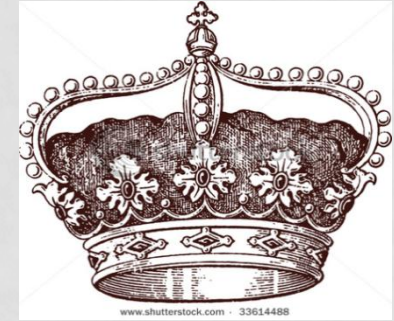


# THE VICTORIAN ERA: FASHION



# The Victorian Era:

- ❖ Queen Victoria ruled the British Empire.
- ❖ The era was divided into two parts:  
early 1830-1870  
late, from 1870-1990.



# FASHION

## Dresses:

❖ During this time period women had a magnificent wardrobe full of spectacular gowns which included:

- ❖ lounge gowns
- ❖ walking out dresses
- ❖ evening or ballroom gowns



<http://www.aquano.com/victoria-fashion-coloring-pages>



F  
A  
S  
H  
I  
O  
N

# The Lounge Gown:

- ❖ The lounge gown was worn by the woman “at home.”
- ❖ The dress was made in velvet and lace with an overdress of cashmere.
- ❖ There were also bows on the shoulders of the dress.



# F A S H I O N

## Day Dress:

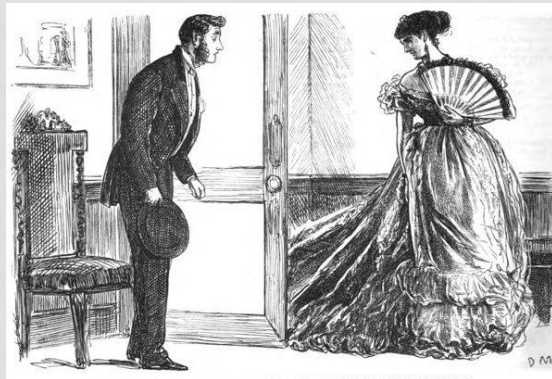


- ❖ The day dress was also called a “walking out” dress.
- ❖ It consisted of a V-neckline filled with a high ruffle collar.

F  
A  
S  
H  
I  
O  
N

# Ballroom Gown:

- ❖ Wealthy women wore these gowns to special events.
- ❖ The gown sported a low shoulder bodice edged with frills.
- ❖ It also had a sleeve that hit the elbow and ended with a ruffle.



F  
A  
S  
H  
I  
O  
N



## Hair:

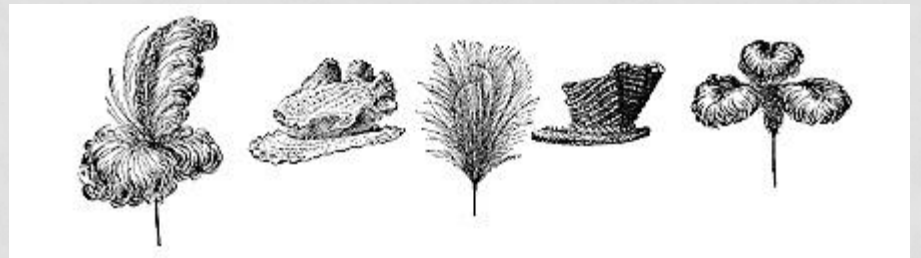
- ❖ Worn long or caught up in a bun.
- ❖ Ringlets of curls hung on either side of the head.
- ❖ In the 1870's, women drew up the side hair but let it hang in long, loose curls in back.
- ❖ Crimping also became popular .
- ❖ Women wore false hair pieces and extensions, as well as artificial flowers.
- ❖ Wealthy women boasted encrusted head pieces with diamonds and pearls.



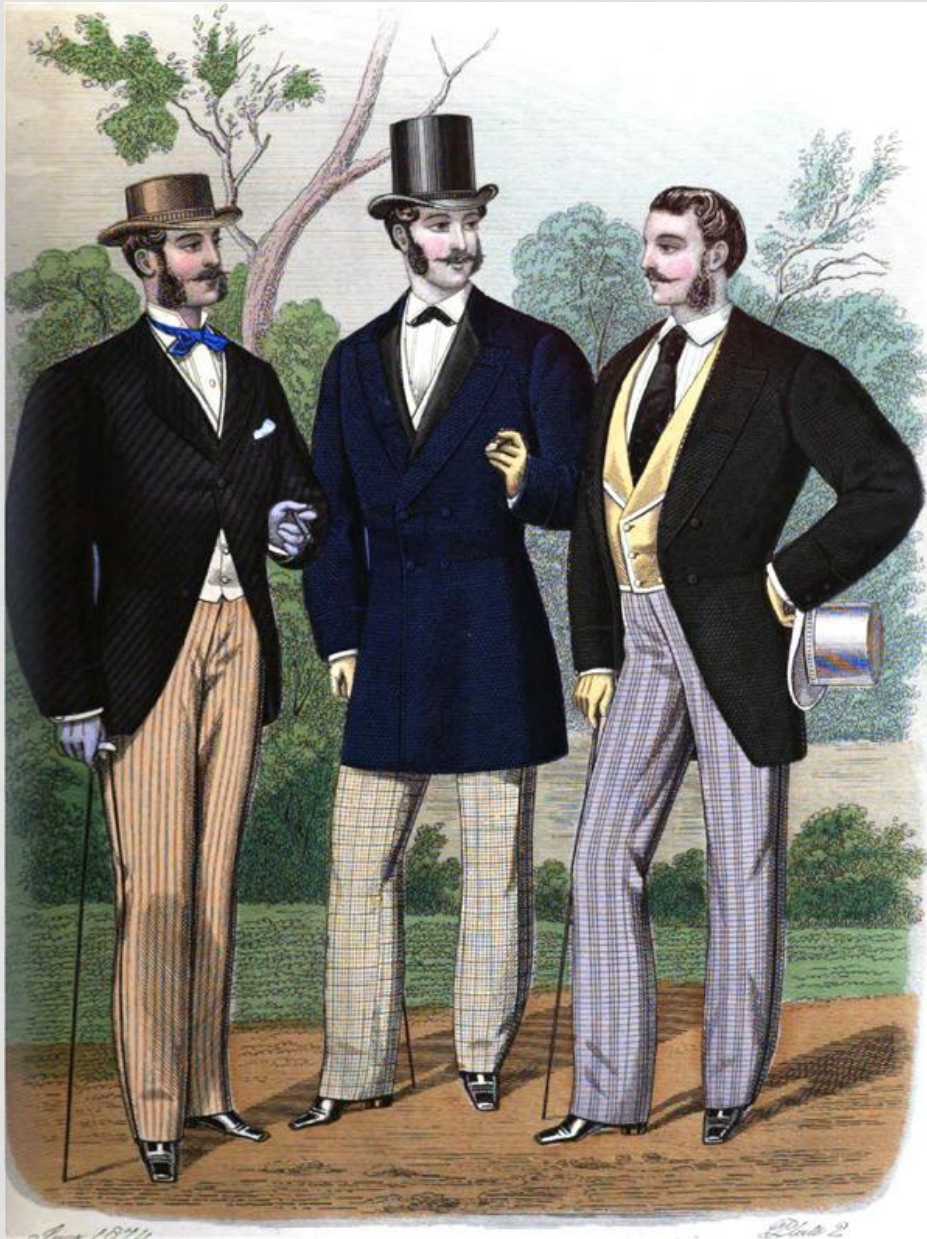
F  
A  
S  
H  
I  
O  
N

# HATS!

- ❖ Women would often use birds to decorate the inside and outside of the hat.
- ❖ In some cases the entire bird would be used to decorate the hat!





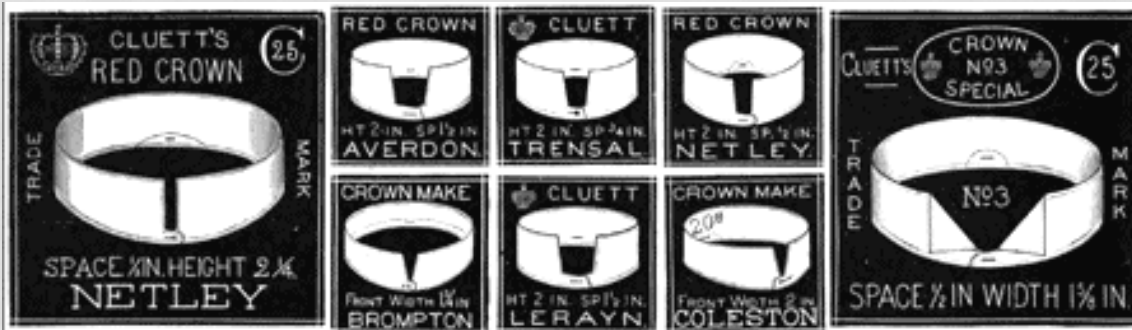


# Victorian Men's Fashions

**Most city men would wear a close fitting shirt, usually with cuffed sleeves.**



**Small, close-lying collars topped vertical buttons or laces that stretched to the man's midsection.**



# Neckties:

made of silk in varying shapes and patterns



# Waistcoats (Vests)



- Most variety in a Victorian man's wardrobe.
- “Notched” lapels
- Pockets on either side for handkerchiefs, pocket watches
- Belt or tie at the back to make it form fitting.



Men wore boots that were fastened either with buttons and hooks or with laces.

Pointed, narrow toes

Detailed edges

Often covered with

**Spats** for decoration

# Boots



# Male Overcoats

