

Note:

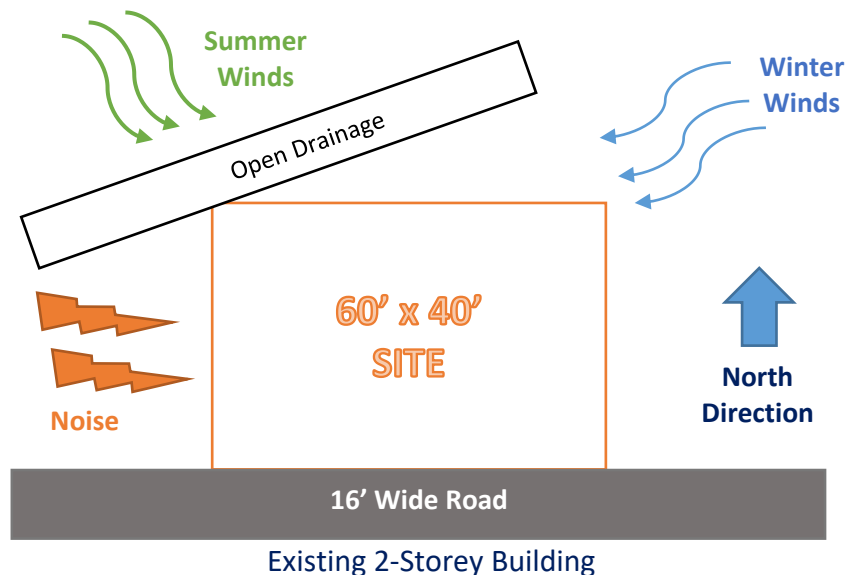
Attempt All Questions. Each question carry 10 Marks

Use internet to find climatic conditions or ask your elders

Those who don't know the usage of Microsoft Word can write answers manually and paste/sketch pictures with it where necessary.

Q1: Take any building from internet, put its picture in Microsoft Word and explain its positive and negative points according to the principles of design. What could be done to make the building more attractive? Answer must be at least 200 words. (CLO1-PLO7)

Q2: Design and sketch an ideal single storey house on the site shown below. The design should be free hand and can be drawn on graph paper. If a graph paper is not available then make a grid of 5'x5' on a separate white A4 size paper. The house should be naturally ventilated and have natural lighting. Also, it should be free of noise. The site is located in Peshawar. Label or explain the Plan neatly. (CLO1-PLO7)



**Site Problems:**

- Open drainage in direction of summer winds which is a major source of bad smell
- Noise from west side and Winter winds from north-east side
- Existing 2 storey building on south side blocking some solar radiations

Q3: Select a site at the place where you live. Do Micro site analysis of Site and make its sketch on another A4 paper and write about it in detail. You can take your own lawn as a site for analysis or any other site in the neighborhood. Additionally, make a solar path diagram for your area on a separate piece of paper to find the exact sun angles for both winter and summer. Watch videos on YouTube to understand and make Solar Path diagram. Use these sun angles to make a rough sketch of a room. Show window height, type of fixed sun shade used, angle and height of shade as well as its depth and width by keeping sun angles in mind. The purpose for the sketch is to show how winter sun is allowed and summer sun is blocked. (CLO1-PLO7)