

# **SESSIONAL ASSIGNMENT**

NAME FAIZULLAH KHAN

ID 14840

DEPERTMENT BS (SE)

SECTION B

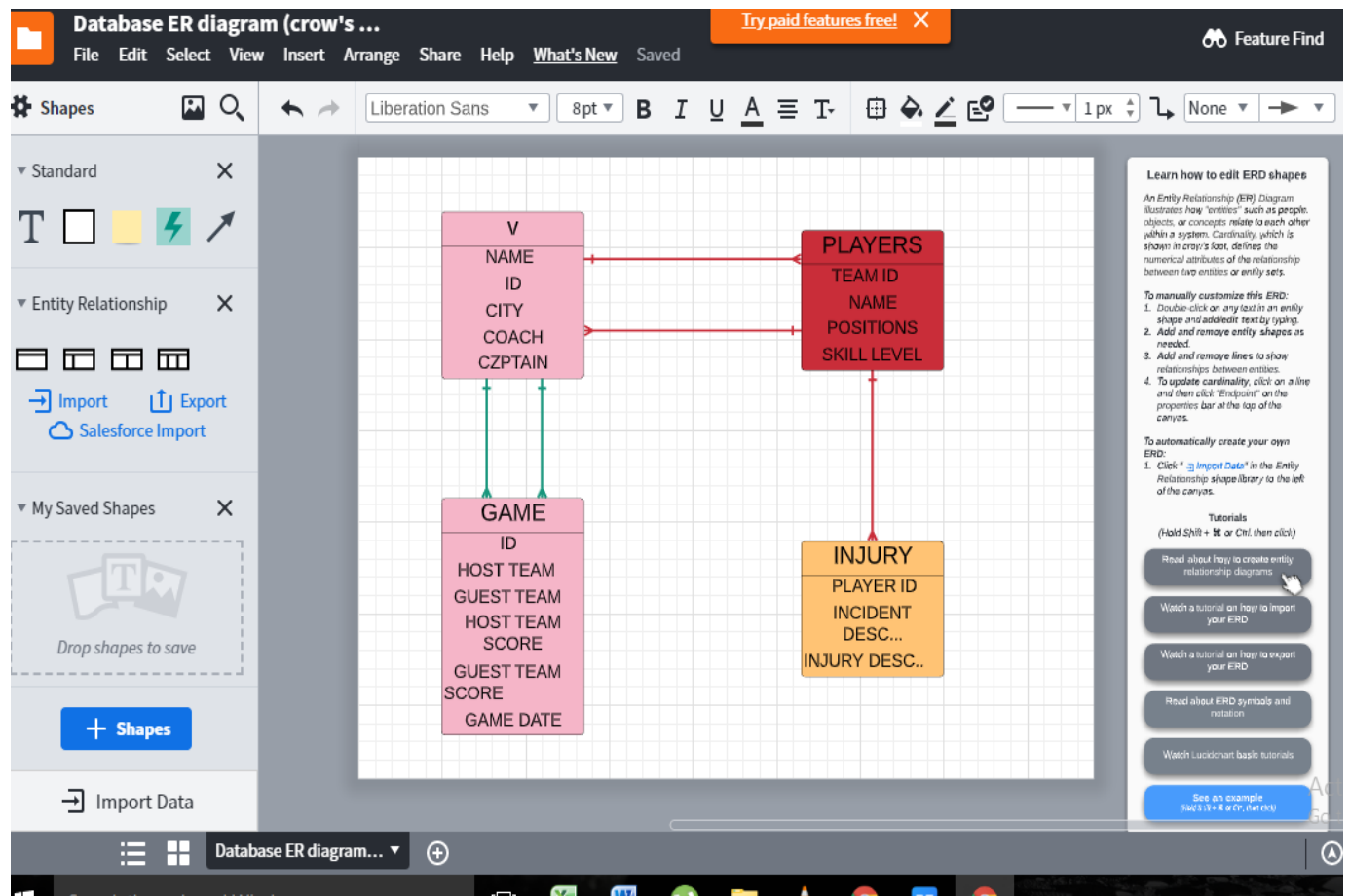
SUBMITTED TO MAM RIMSHA KHAN

### Q1: Using the following business rules create your own ERD.

### Following requirements for a simple database for the National Hockey League (NHL):

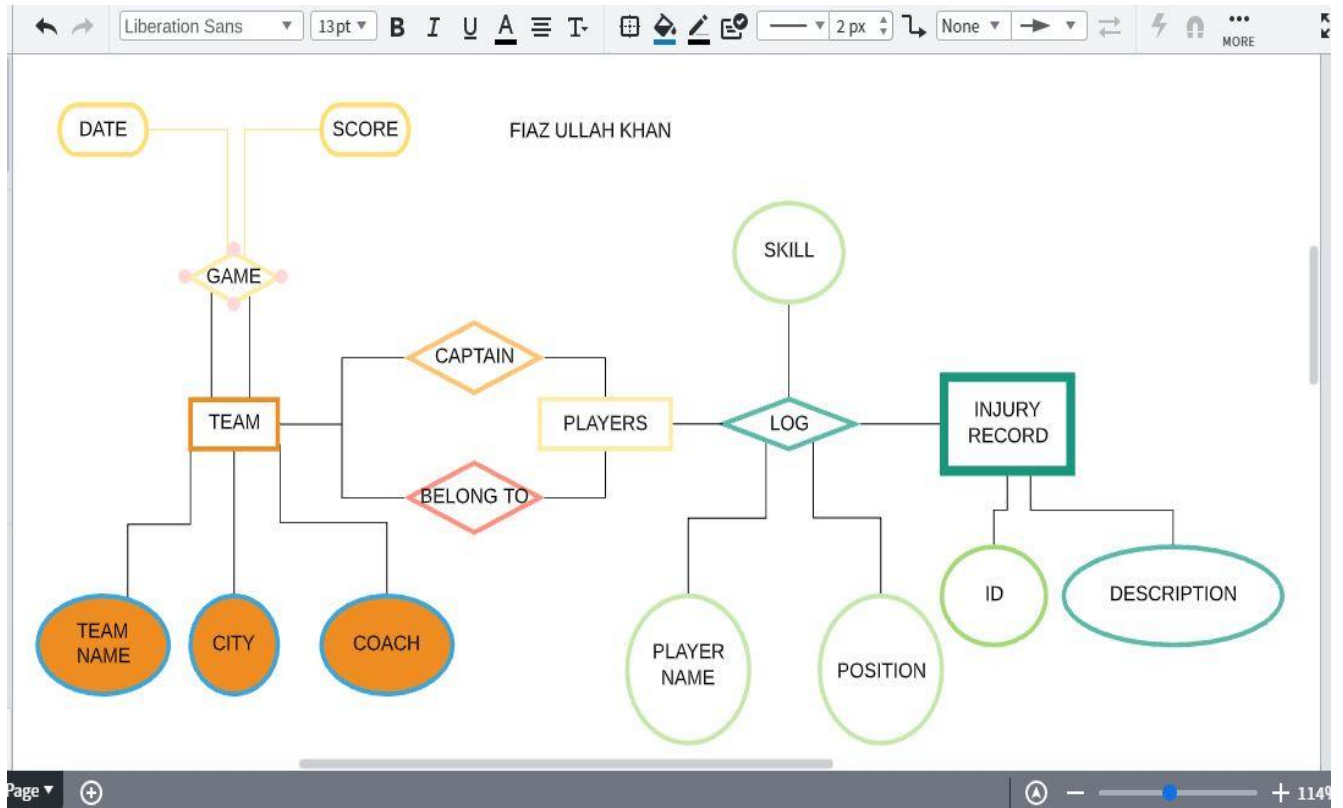
- the NHL has many teams,
- these teams only belong to NHL
- each team has a name, a city, a coach, a captain, and a set of players,
- each player belongs to only one team,
- each player has a name, a position (such as left wing or goalie), a skill level, and a set of injury records
- NHL has an official website.

Ans:



**Q2: Now convert the ERD made in Q1 to Rational Model?**

**Ans:**



**THE END**