

(1)

Name: Haider Iqbal

ID: 14495

Semester: 4

Q1:-

Part: 1)

Candidate key :-

A candidate key is a set of attribute or combination of attribute or column in a table that can uniquely identify.

So in the following table the student ID and cell phone number is candidate key.

Q2

part: 2:-)

Data Integrity :-

Data Integrity is the process of ensuring that the data is accurate and

consistent over its whole life cycle.

Data Redundancy:  
The redundancy is the process in which condition that can cause the same piece of data to be stored in multiple places of database.

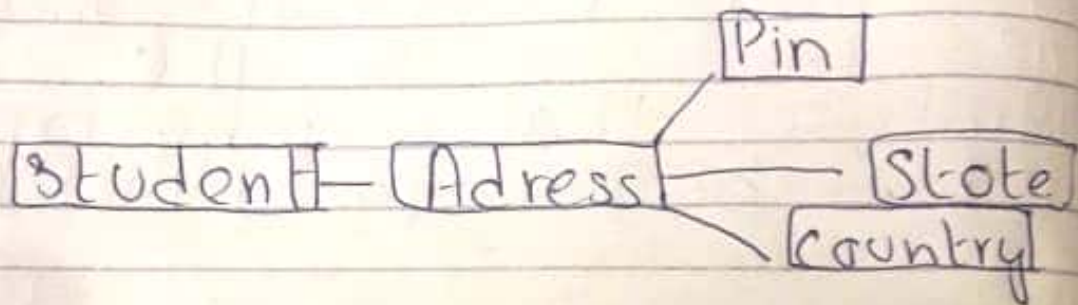
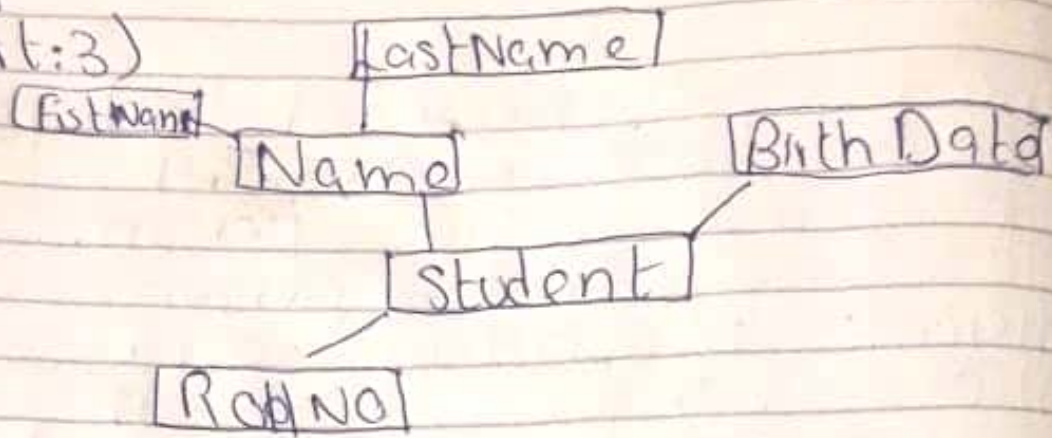
1) ext: 4 :-

The reduced maintenance method that ensure that the data base is ~~open~~ optimized and performing well, an other technique such as backups recoveries and reorganization is Partitioning.



Qs

Part: 3)



Attributes having further multiple attributes are called multivalued attributes.

Q3

Part: 6

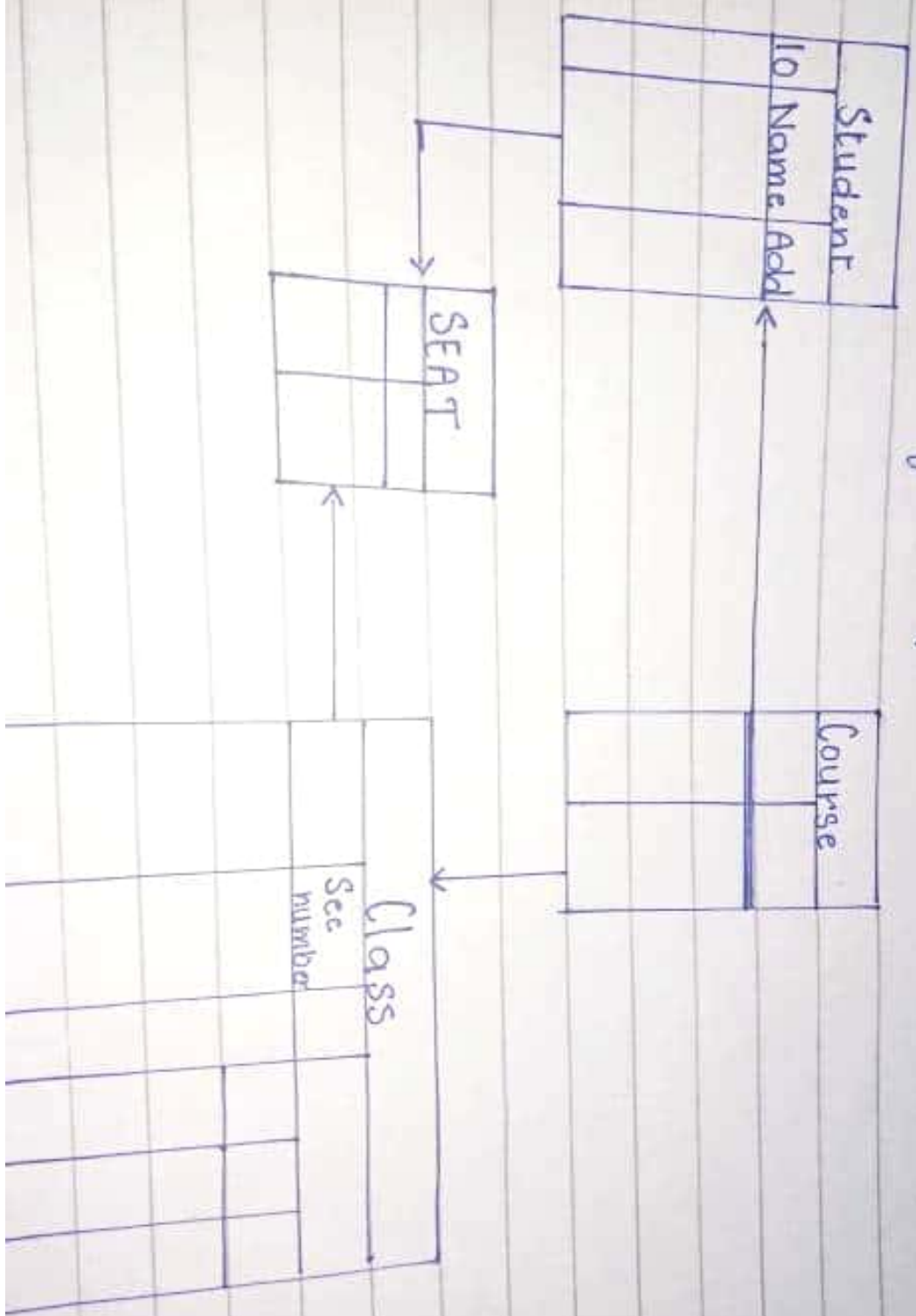
The explicit need of backup in data base because if more than one person data base and person different operation and make changes in it or an error occurs in it so that for that original file is save in the data base, that's why explicit need backup in data base

Q3

Convert

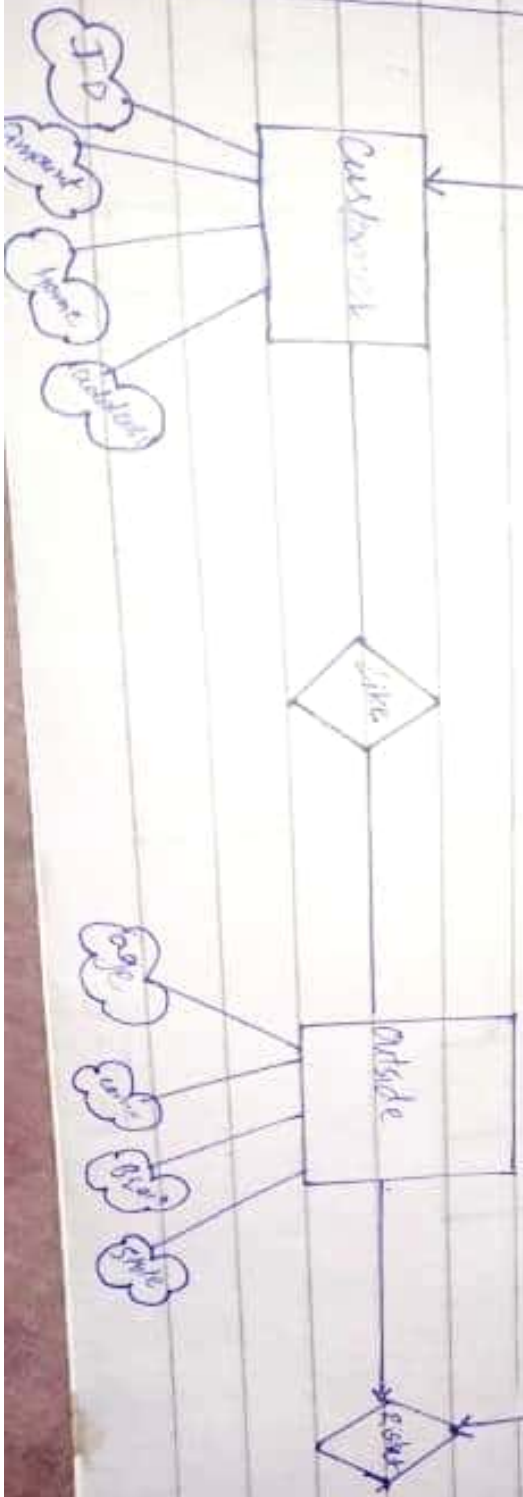
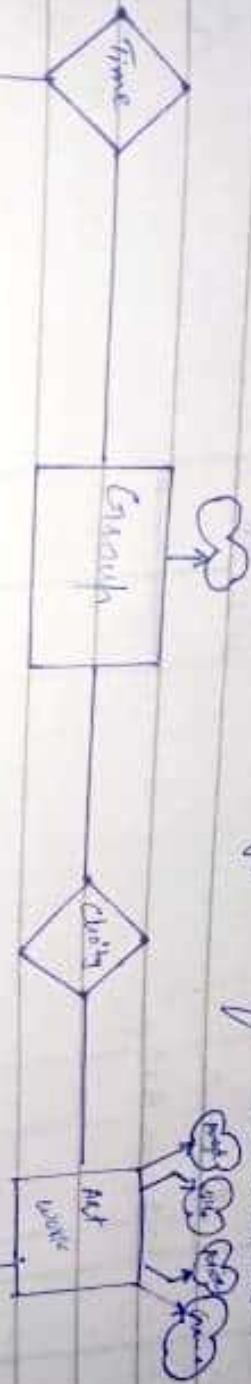
the following model to relational models

Page = 5





Ans 2 Draw an ERD from the following business rule use proper notations for the type of attributes:

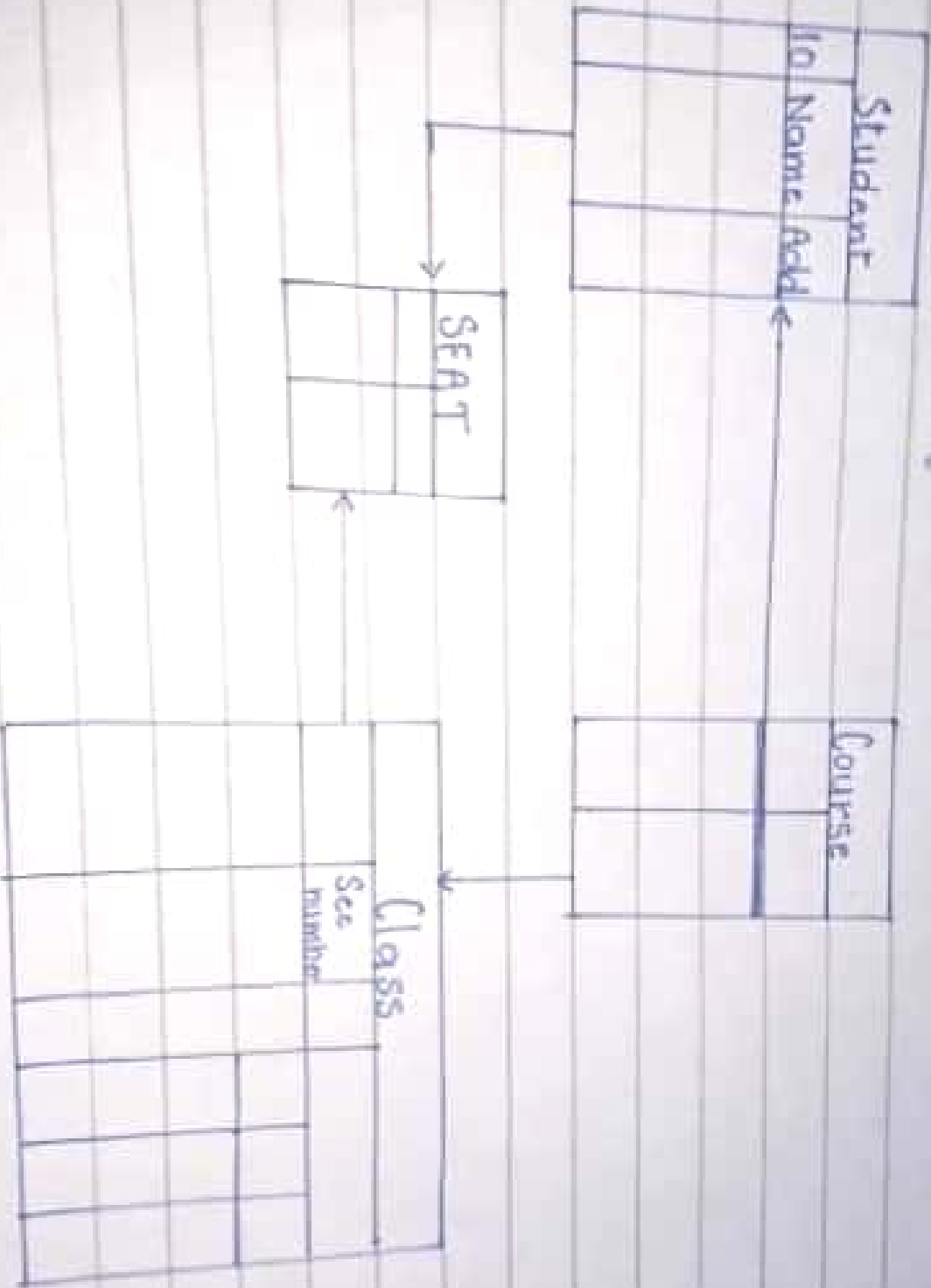


Q3

Convert

the following model to relational model.

Page - 5



P.T.O