

(1)

Name shumaila

ID 6827

Semester 8th

Degree Bs (cs)

Subject Database

Mid-term

QUESTION NO 2:-

What is Data Redundancy and Data integrity?

Solution:

Data Redundancy:

Data redundancy in database means that some data fields are repeated in the database.

Data Integrity:

The term data integrity refers to the accuracy and consistency of data. When creating database attention needs to be given to data integrity and how to maintain it. A good database will enforce data

(2)

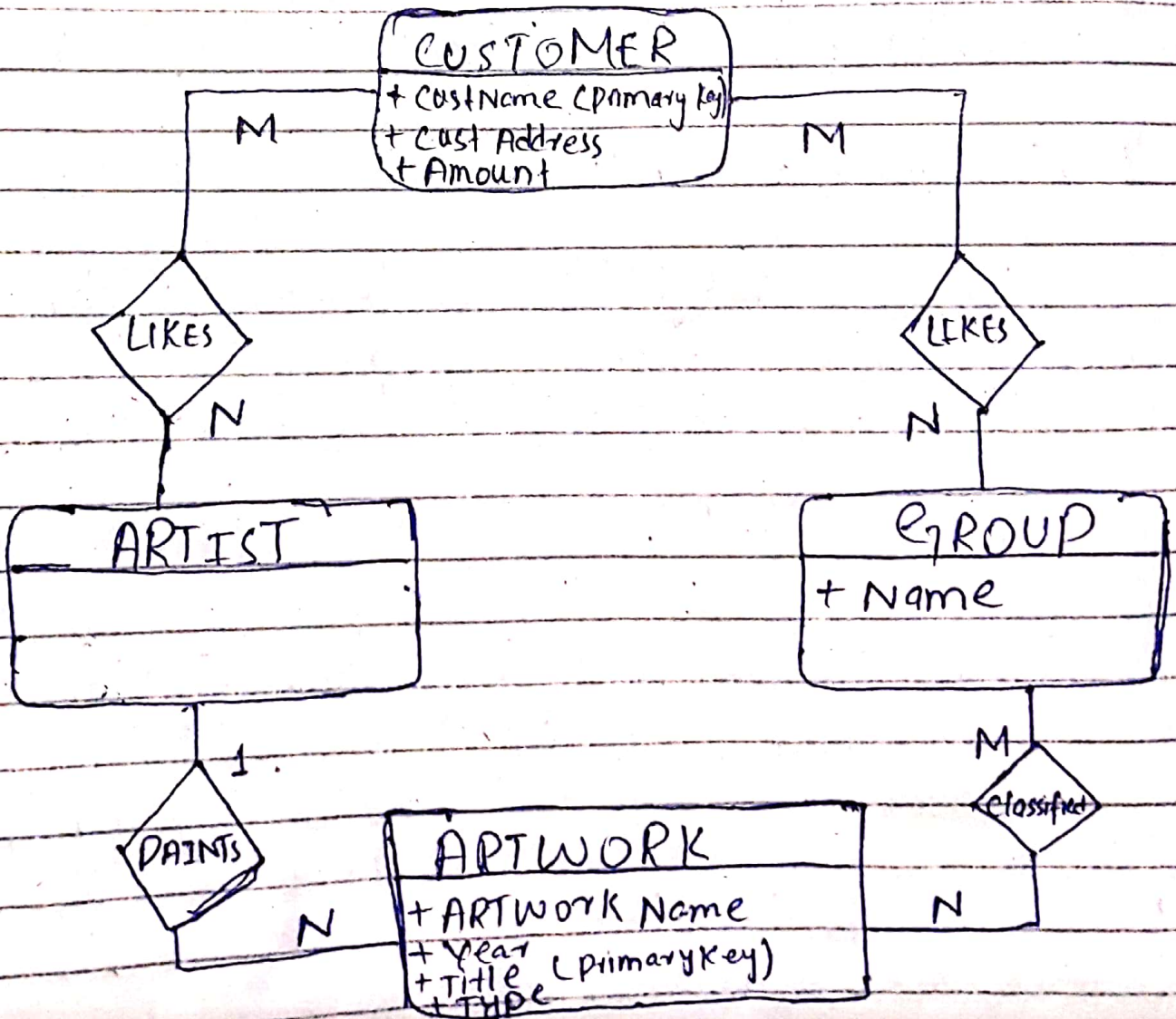
Integrity whenever possible.

Question NO (2)

Draw an ERD from the following business rules: Use proper notations for the type of attributes.

Solution:

ERD



(3)

Question NO 1

Which attribute in the following table is a candidate key?

Solution:

In this table ID & cell attribute key for the table we can't add more data because we have the unique attributes.

(4)

Question NO 3

How a multivalued Composite attribute is represented in Conceptual Model. show with example.

Solution:

A Multivalued Composite Attributes

Composite attributes are not atomic because they are assembled using some other atomic attributes.

This attributes consists more than one value for a given entity

Example:

A typical example of a Composite attribute is a person's address, which is composed of atomic attributes, such as city, zip, & street.

Question NO 4:-

How is there 'reduced maintenance' in data base approach?

(5)

Solution:

Most of process within the system are encapsulated and reside inside the database engine the behaviors maybe incorporated into new behavior in an ad hoc fashion.

QUESTION NOS

How are the following represented using ER Diagram Mandatory one, Mandatory many, optional one, optional many.

Solution

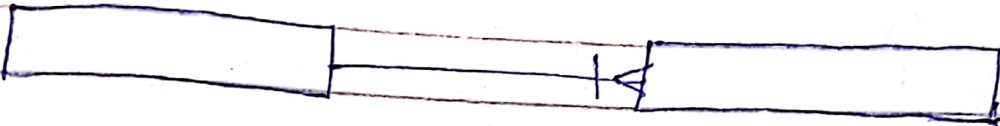
In the entity relationship model we can declare that some relationships are mandatory

(6)

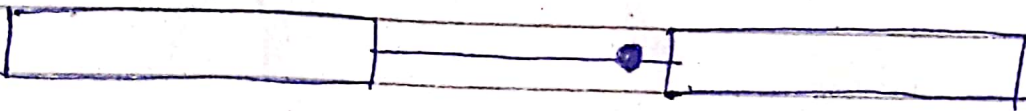
where others are optional.
Mandatory one.



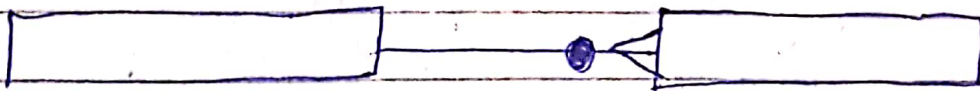
Mandatory many:



Optional one:



Optional many:



Question No 6

Why is there an explicit need
of backup in data-base
approach?

(7)

Solution:

The explicit need of database approach is because for a centralized shared database to be accurate and available all time, comprehensive procedure is required to be developed and used for providing backup copies of data and for restoring a database when damage occurs. A modern DBMS normally automates many more of the backup and recovery task than a files oriented system.

(8)

Question NO 3

Convert the following Conceptual Model to Relational Model.

Solution:

