

## Database Systems Assignment

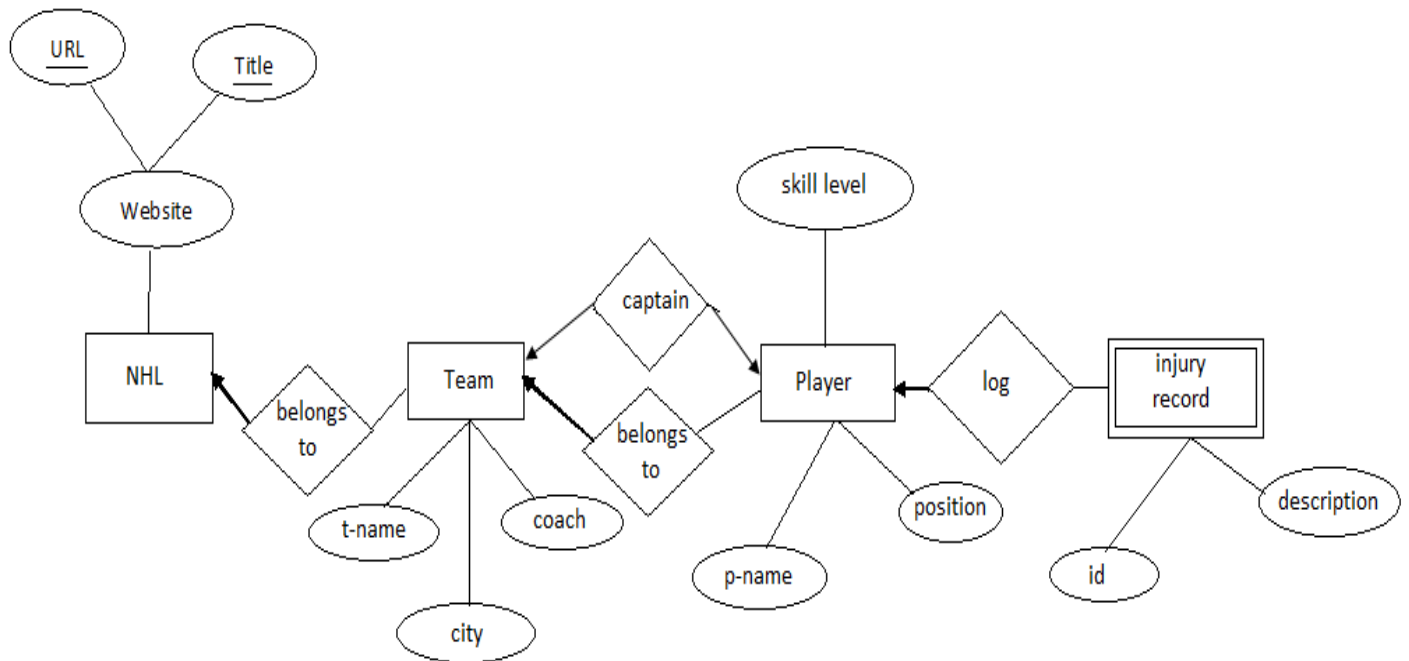
Name: Hassan Mudassir

ID: 13003

**Q1) Using the following business rules create your own ERD. Following requirements for a simple database for the National Hockey League (NHL):**

- the NHL has many teams,
- these teams only belong to NHL
- each team has a name, a city, a coach, a captain, and a set of players,
- each player belongs to only one team,
- each player has a name, a position (such as left wing or goalie), a skill level, and a set of injury records
- NHL has an official website.
- The website has a unique URL and title.

**Ans)**



Q2: Now convert the ERD made in Q1 to Rational Model.

Ans)

