

Name : Jam Murad Ghanvi

ID : 7440

Section : A

Semester : 12 (Batch-14)

Assignment : Construction
Management

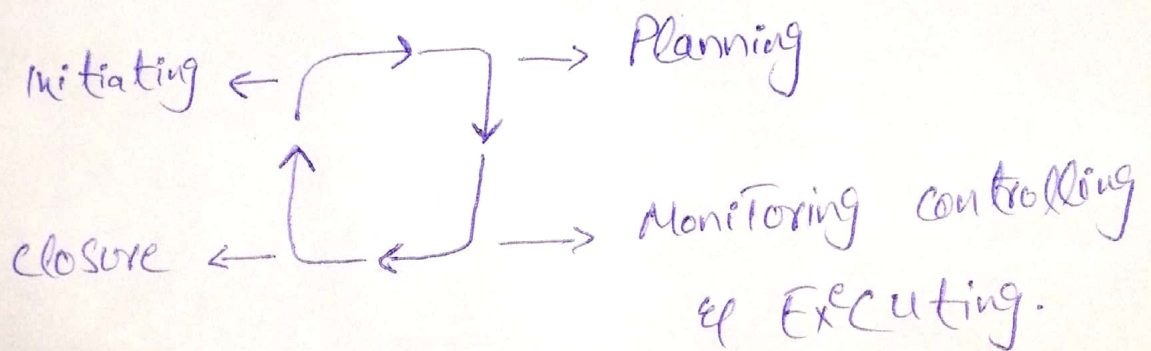
Submitted To : Dr. Engr. M. Zeeshan Akhnd

19th National University

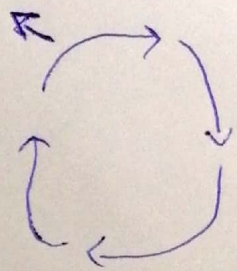
Problem 1: what is Project Life-cycle
explain briefly with diagram?

Project Life-cycle:

The Project Life-cycle is a series of various activities/tasks that are circular for accomplishing Project objective or targets.



Initiating



Initiating:

it is the first and most vital step in the life-cycle of your Project, in the Process group,

The initial scope of the Project gets defined, as well as resources are committed. Thus performing this Process group well ensures the success of your Project.

Planning:-

In This Process group, an appropriate level of detail is planned for The Project. It's done to plan time, cost and resources. It helps you to estimate The work needed and manage risk effectively during The execution of a Project.

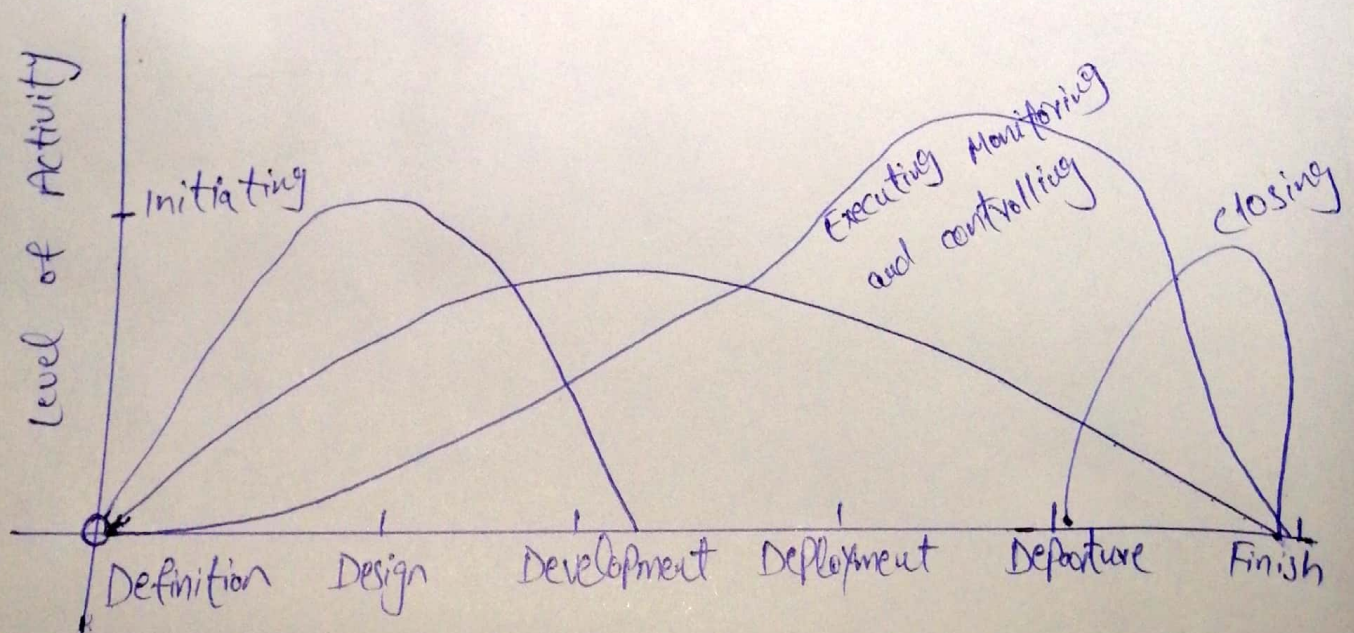
Monitoring, controlling & Executing:-

This Process group consists of The Processes which are used to complete The work defined in The Project management Plan. It's about achieving The Project's objectives. It also involves tracking, reviewing and regulating The Performance of The Project. Also, you need to identify The Potential Problems quickly and take corrective actions.

Closure:-

This Process group is an important part of Project management, performed to finalize all Project activities to complete the Project. This means finishing all activities across all the Process groups, disbanding the Project team and signing off the Project with the customer using the Project closure report.

Activity level During Each Phase:



Problem 2:-

Define & explain briefly major types of construction Projects?

Types of construction Projects:

There are different types of construction Projects.

- => Residential => Building
- => Institutional & commercial
- => Industrial.
- => Specialized industrial construction.
- => Highway construction.
- => Heavy construction.

=> Residential:

Residential construction Projects incorporate houses, town houses, lofts, apartment suites, bungalows, single unit

homes and subdivisions. The housing outlines are by and large done by planners and engineers and the development is executed by manufacturers who contract subcontractors for basic, electrical, mechanical and other claim to fame work.

building :-

Building development is maybe the most famous kind of development venture. it is the way toward adding structure to genuine property. A large portion of the undertakings are room increments and little remodels.

Institutional & Commercial:-

institutional and business building development covers an extra ordinary assortment of venture sorts and sizes, for example, healing facilities & facilities. School & colleges, sports offices & stadiums, expansive strip malls and retail chain stores, light assembling plants and distribution centers, and high rises for workplaces and inns.

Industrial:-

industrial construction is only a small part of the whole construction industry nevertheless it is a very important part of the industry.

Specialized Industrial Construction:-

This type of construction project usually involves very large scale project with a high degree of technological complexity such as nuclear power plants, chemical processing plants, steel mills and oil refineries.

Highway Construction:-

Highway construction involves the construction, alteration or repair of roads highways, streets alleys, runways, paths, parking area etc.

Heavy construction:-

overwhelming development extends more often than not include ventures that are not appropriately named either building or roadway.