



Name : Mazhar Saleem

ID : 14455

Assignment : Data Communication and

Networking (Ghassan hasnain)

Deptt : BSCS

Sems : 4th

Data Communication and Networks (Lab)

Mid Term Assignment

Evaluation Tasks in Cisco Packet Tracer

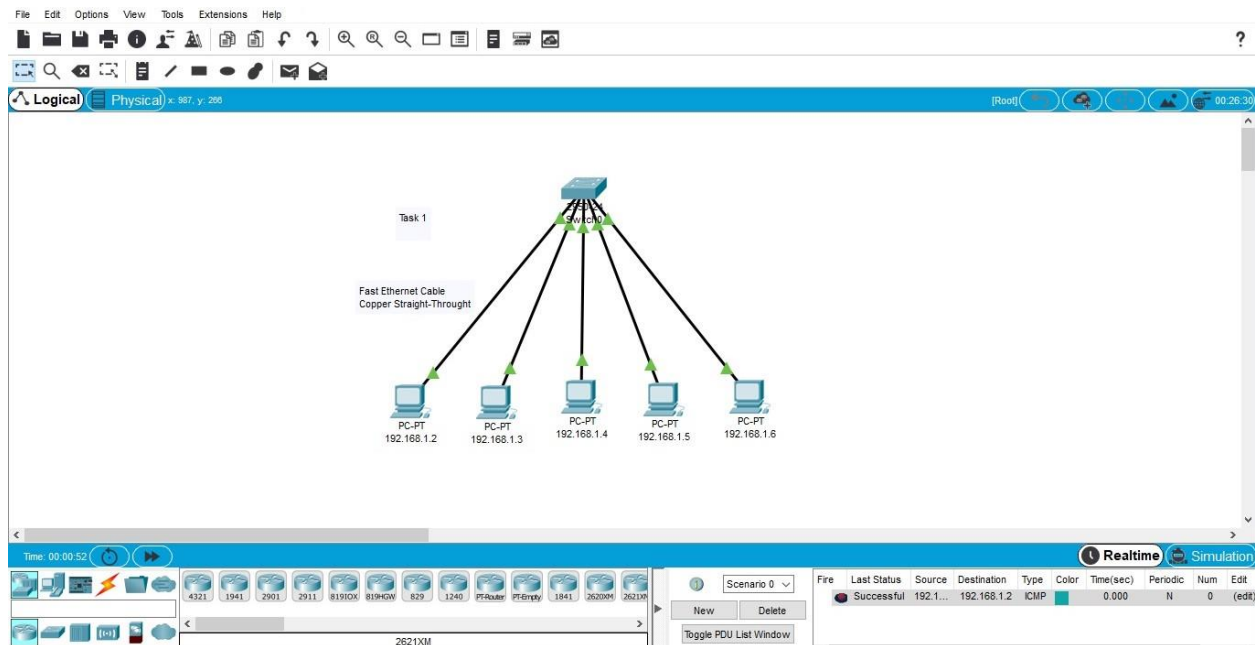
Task 1:

Construct a network topology having one switch with connected with 5 PC's with Fast Ethernet Cable, assign them proper IP addresses, subnet mask and default gateways and send message from PC5 to PC1 and demonstrate the simulation.

File:



ScreenShot:



Task 2:

Construct a client server model that have 9 hosts, three of them are computers, and other six hosts will be laptops, in which further connected to 2 access points through wireless channel, as three of them will be connected to access point 1 and other through access

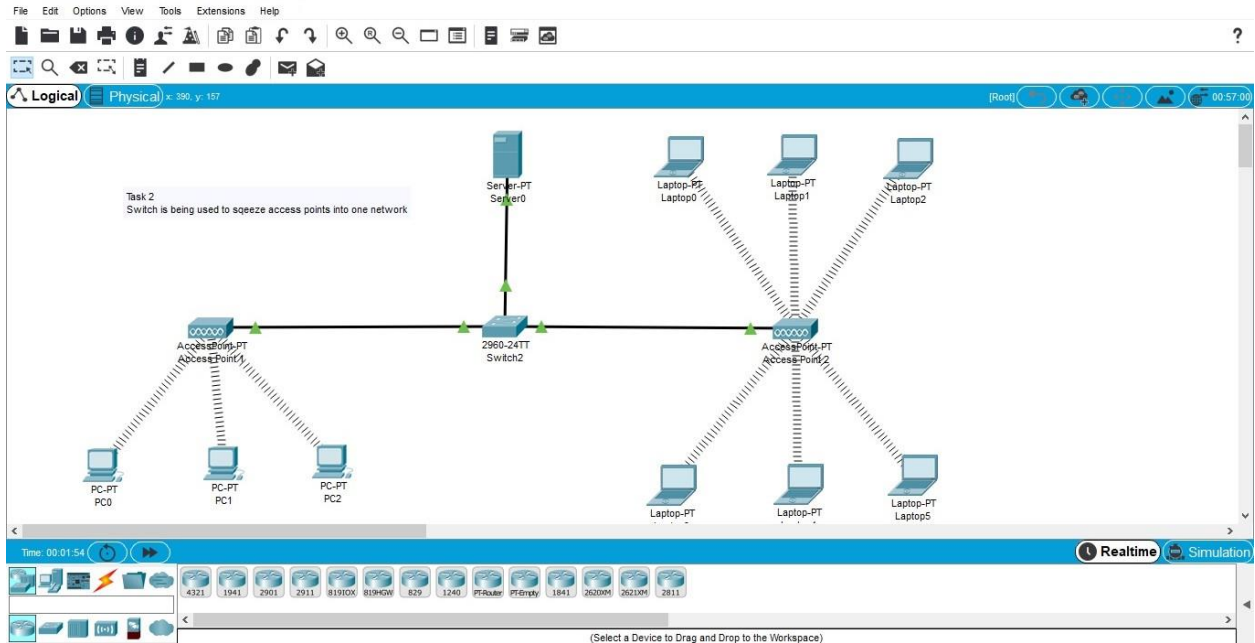
point 2, assign them IP address and subnet masks dynamically from the server. Moreover, access the HTTP server from the client and show the results.

File:



Task 2.pkt

Screenshot:



Task 2.pkt