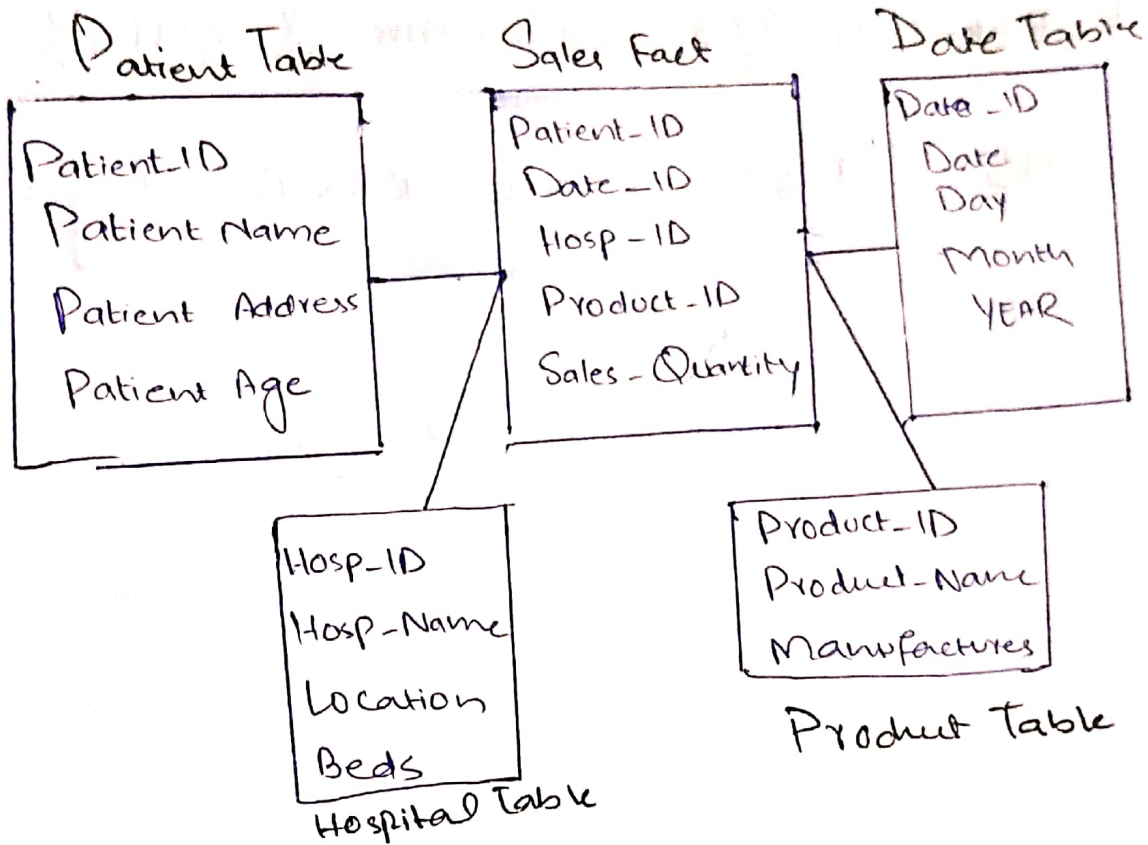


Submitted By: Muhammad Zayak

LAB Task: Data Warehousing LAB

Data Warehouse Schema of Hospital.



define cube Sales [Patient-ID, Date-ID, Hosp-ID, Product-ID, Sales(Qu)]

Sales Quantity = \sum (Product sold) Sold product (*).

define ^{dimension} Patient as (Patient-ID, Patient-Name, Patient Address, Age)

define dimension dates as (Date-ID, Date, Day, Month, Year)

define dimension hospital as (Hosp-ID, Hosp-Name, Location, Beds)

define dimension Product as (Product ID, Name, Manufactures)