

Q NO 1

①



Name :- Fahad Humayun
ID :- 7279

~~22~~

POSITIVE Points

The most positive point in the building is that it has an excellent focal point which helps the viewer to navigate through the overall structure highlighted with black colour. The little dots in black area make focus more attractive. The focus point also emphasized combination b/w red & black with negative space. We studied it also seemed like it has followed a specific pattern may be according to the commercial building by laws.

NEGATIVE Points

The building is outstanding but if we clarify it look more attractive & add some more detail if we

(2)

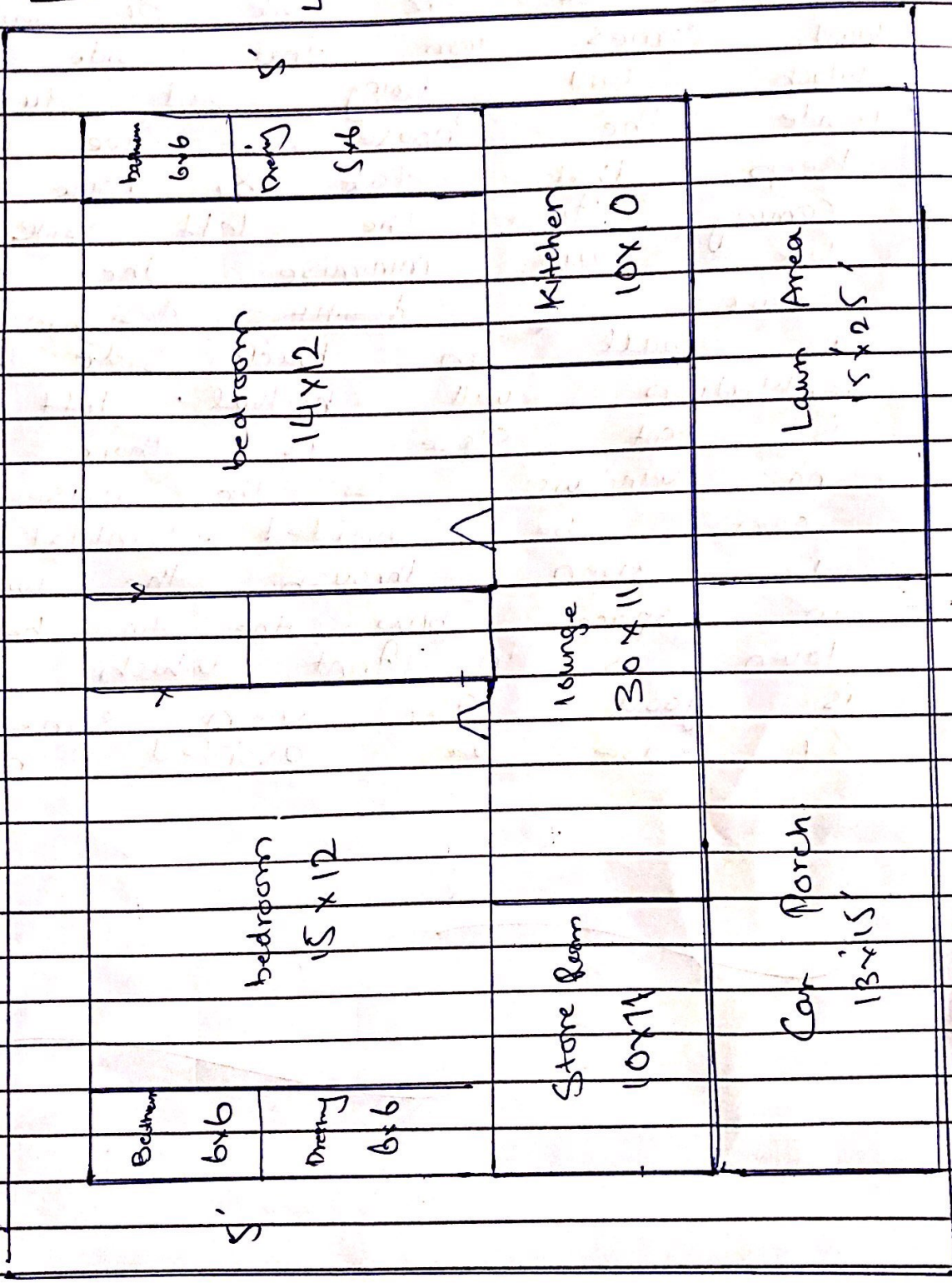
look more attractive & add some more detail. if we look at the window glasses we can see that it an un manged compare with each other we can see how the golden ratio is changed & window glasses have rough magement. This is some mirror detail

3

Q: 2

40'

60'



This site is design according to this condition.

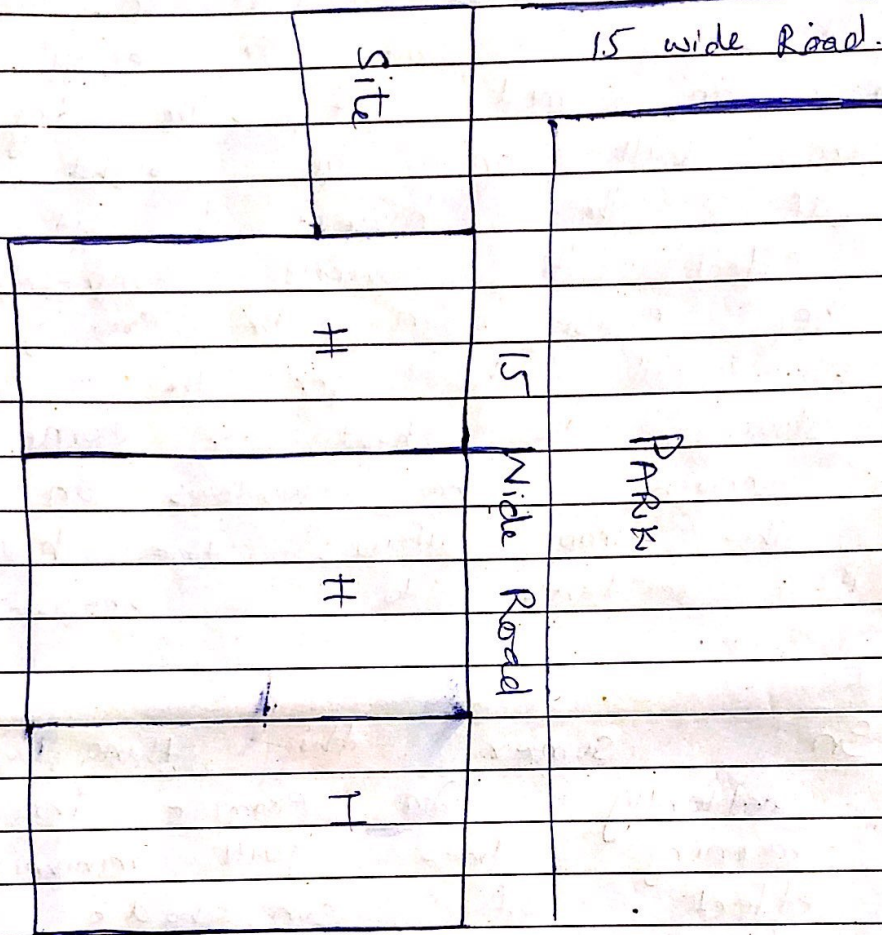
13

④

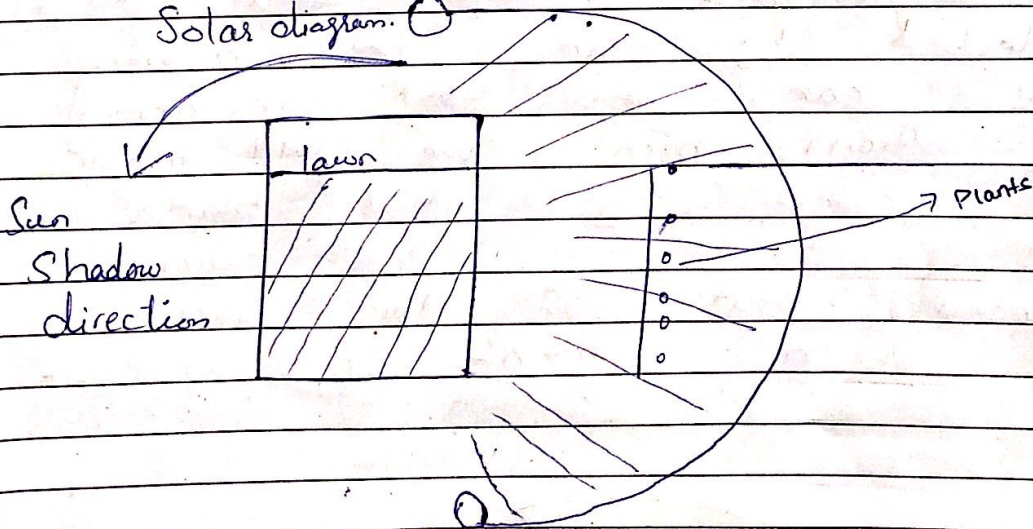
The drain is on the back side of the side of summer wind comes from that side which will bring bad odour inside the house, so we will keep that close & noise is coming from the left side. We will minimise the drain odours by ~~designing~~ designing a wall on back side & ventilation will natural. left side is kept close as there are no windows. So the noise can be avoided. Ventilation is given through the windows in space b/w the two bedroom lawn is in front which is good as drain smell & noise are avoided here.

5

Q3 Sit location according to question detail of location in this diagram.



Solar diagram. O



Which effect different ways in winter and summer
Winter sun is allowed summer is blocked

6

In winter the sun is allowed to keep the house warm. In morning lawn area can be used having trees in front & enjoy the sun. In mid of the day the sun will on the right side of the house so it won't affect the overall temperature of the house. In the evening the sun will be on the back side allowing the heat to come inside through the windows. In winter this map allows the house & its residents to be energized by sun.

In summer this thing will affect differently. For example in the morning trees will minimize the effect of sun shade on summer lawn area will be affected by sun in morning but can be used in evening. & from back we will minimize the effect by indoor plantation. In this way we can control heat of the sun in both winters & summers.