

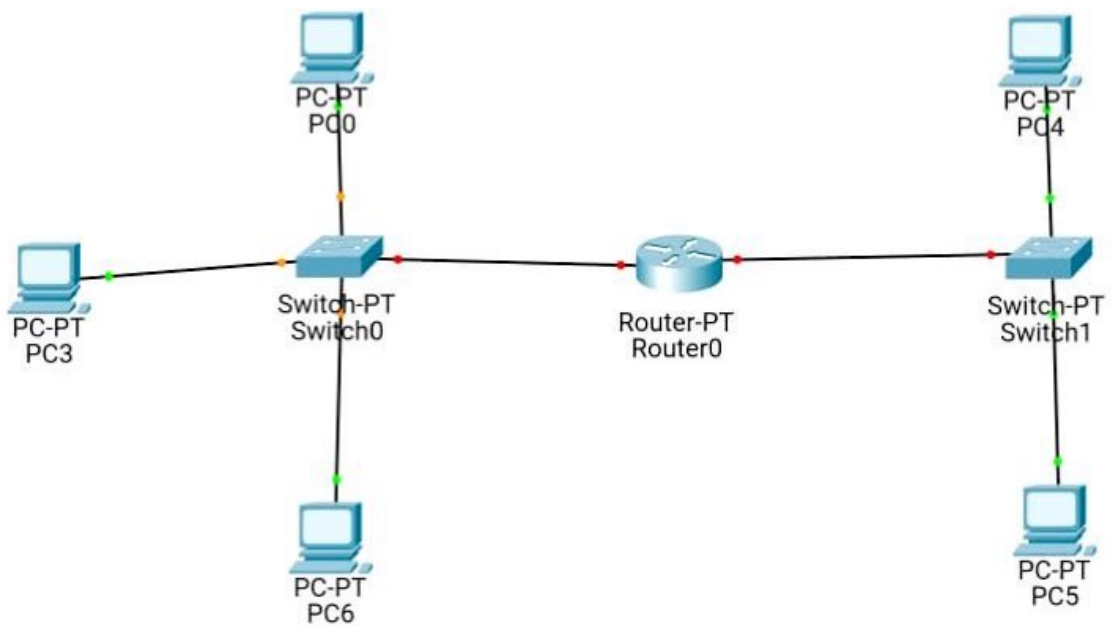
NAME :- SULMAN KHAN

ID :- 14518

SEMESTER :- 4 (A)

COURSE :- COMPUTER NETWORKING.

TEACHER :- MANSOOR QADIR.



Router 1 > CLI

% invalid input detected at 'n' marker

Sulman (Config-line)# password 14518

Sulman (Config-line)# login

Sulman (Config-line)# exit

Sulman (Config-line) vty 0 4

Sulman (Config-line)# password 14518

Sulman (Config-line)# login

Sulman (Config-line)# exit

Sulman (Config)#

Date:...../...../20.....

M T W T F S

> Router > CLI
User Access Verification

Password:

Sulman > enable

Sulman # Configure

Configure from terminal, memory, network [terminal]? terminal

Enter Configuration commands, one per line. End with CNTL/Z.

Sulman (Config) # enable secret password.

Sulman (Config) # exit

Sulman #

> Router 1 > CU

Sulman (Config)# banner motd #No ACCESS

Enter text message. End with character '#'.
#

Enable

Exit

#

Sulman (Config)# banner motd # No ACCESS

Sulman (Config)#

> Router 1 > CLI

Invalid input detected at '1' marker

Salman (Config) # int

Salman (Config) # interface fo

Salman (Config) # interface fo/

Salman (Config) # interface fo/0

Salman (Config) # intertaje fo/0

Salman (Config) # address

Salman (Config) # adress 192.168.1.1.255.255.0

Salman (Config) # shut.

Sulman #

Sulman #

Sulman #

Sulman #

Sulman #

Sulman #

Sulman #

Sulman # write

Building Configuration.

[OK]

Sulman #

x
Router (Config)#hostname Sulman Khan

%. invalid input detected at '1' marker

Router (Config)#h9st

%. invalid input detected at '1' marker

Router (Config)#

Router (Config)#hostname Sulman Khan

Sulman (Config-line)#line console 0.