

Name **Sufyan ahmad**

Id **13062**

Subject **database system**

Teacher **Miss Rimsha khan**

Degree **BS.SE**

Name: Suggan Ahmad

ID: 13062

Page (1)

Question NO 1 :-

What is metadata in database?
Give example.

Answer :- Metadata is simply define as data about data. the data that is used to represent other data is known as metadata.

For example :- the index of a book serves as a Metadata for the content in the book.

~~Q.1~~ (2) :- List down the component of database environment?

Answer :- The database system consist of many components. There are five major component in database environment.

- Hardware
- Software
- Procedure
- People
- Data.

Name: Sajjan Ahmad ID: 13062

page (2).

part(3):- Give 4 example of database Management System? (DBMS).

Answer:- DBMS stands for database Management system. in short a DBMS is a database program.

Example:-

Some DBMS examples include.

MySQL, PostgreSQL, Microsoft Access,

SQL Server, FileMaker, Oracle, RDBMS, dBase, Clipper and Foxpro.

part(4):- what is the data ware house?

Answer:- In computing a data ware house (~~DWH~~), (DW or DWH) also know as enterprise data ware house. (EDW).

data ware housing is the electronic storage of a large amount of information by business or organization.

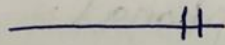
Name : Sufyan Ahmad * ID: 13082

page (3)

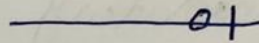
data ware housing is a vital component
of busness inteligence that employs analytical
tecniques on busness data.

Part 5, ∴ How are the following represented using ER diagrams: Mandatory one, Mandatory many, optional one, optional many.

Answer:



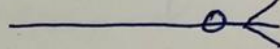
Mandatory one



optional one



Mandatory many



optional many.

Name : Suzzan Ahmad ID: 13062

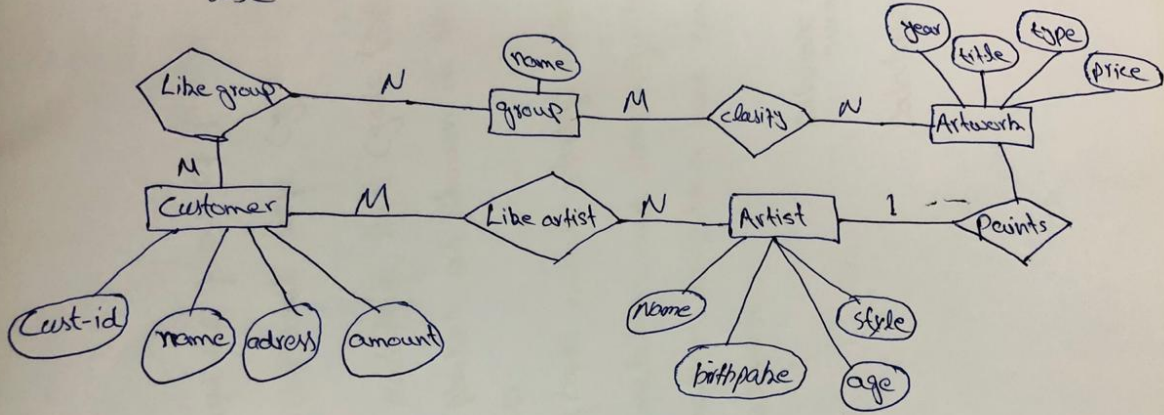
page (4).

part (5):- what are case tool on data base environment?

Answer :- Case (Computer-Aided software engineering) packages are software packages that includes many tools that can be helpfull when it comes to database design.

the main goals of these packages is to give designers a way of representing system that are less complex to understand in their source code or ~~stem~~ schema-based forms. they help automate software development and maintenance tasks and usually contain tools for system analysis - project management and design.

QNO 2 :- Draw an ERD from the following business rules?
use



Name: Suzzan Ahmad ID: 13062

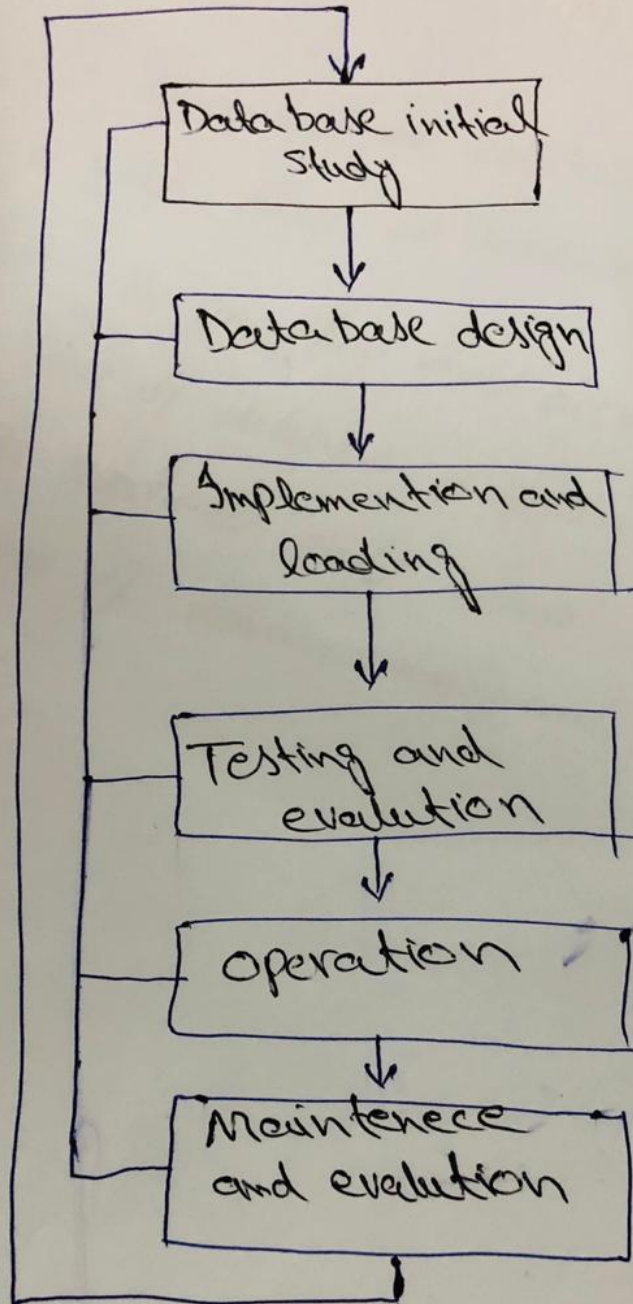
Page (6)

QNO 3:- Draw the flow of phases in database development life cycle?

Answer:- The database life cycle (DBLC) contain six phases. as shown in the following figure:-

database initial study, database design. implementation and loading, testing and evaluation operation and maintenance and evaluation.

Database initial



database development life cycle

Name : Sajyan Ahmed

ID : 13062

Page (8)

Part (b): Conceptual and Relational Models are created in which Phase of Database development life cycle?

Answer: The conceptual model occurs in the initial phase of database development life cycle and the relational model occurs in the management phase of database development.