

Line Polyline Circle Arc

Move Rotate Trim Copy Mirror Fillet Stretch Scale Array

Layers Unsaved Layer State 0

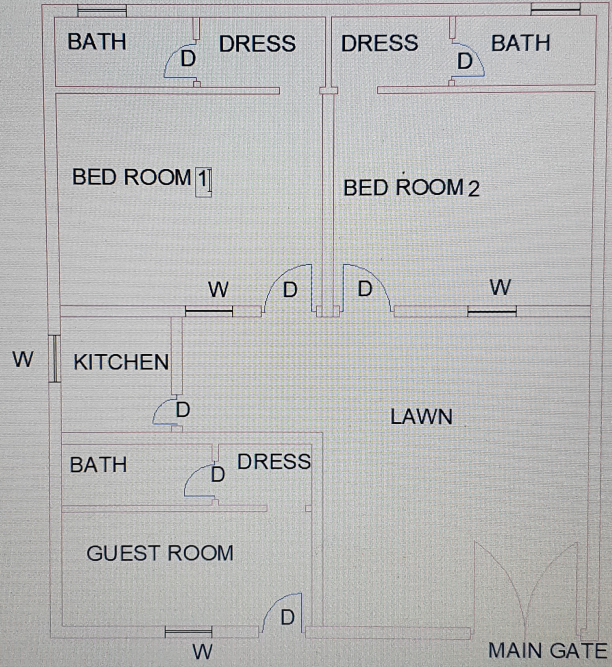
Annotation Text Linear Leader Table

Block Insert Create Edit Edit Attributes

Properties ByLayer ByLayer ByLayer

Groups Measure Utilities

[1]Top[2D Wireframe]



TEXT Specify rotation angle of text <0>: