

## Task no 1

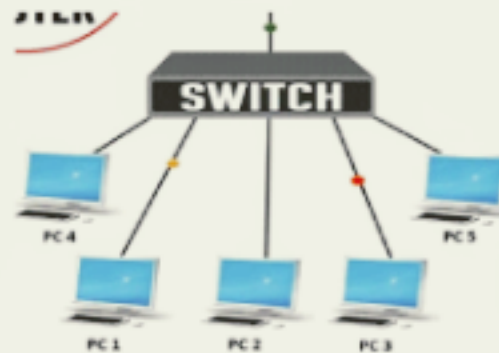
Solution :

Step 1 open the packet tracer

Step 2 add one switch and 5 pcs

Step 3 connect all pcs with switch using copper cross over cable

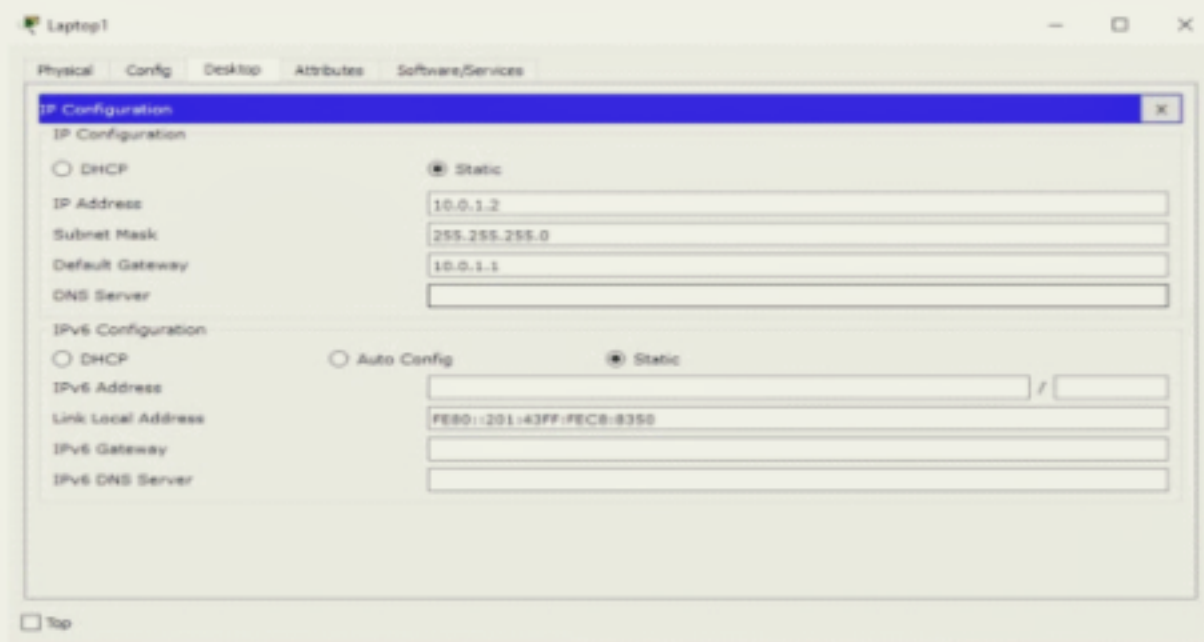
Until this look like topology



Step 4 now after this click on pcs and go in desktop tab which will look like



Step 5 click on the IP configuration application on the left corner of the terminal to configure IP address and subnet masks of the pcs. that look like



Step 6 give IP address in IP address column which is 192.168.0.1

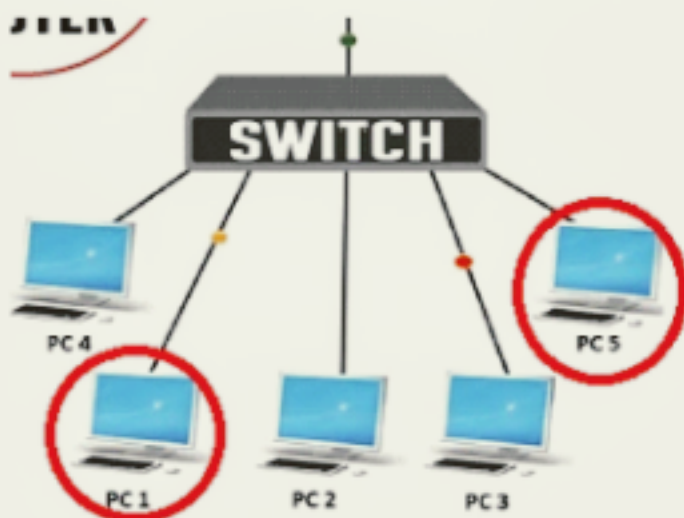
Step 7 give subnet mask in IP address column which is 255.255.255.0

Step 8 Repeat the same for all pcs by incrementing each IP address to one like .

Step 9 Here all the configuration has been done now . y

Hav to check whether a PDU from one pcs can be send to another pcs or not

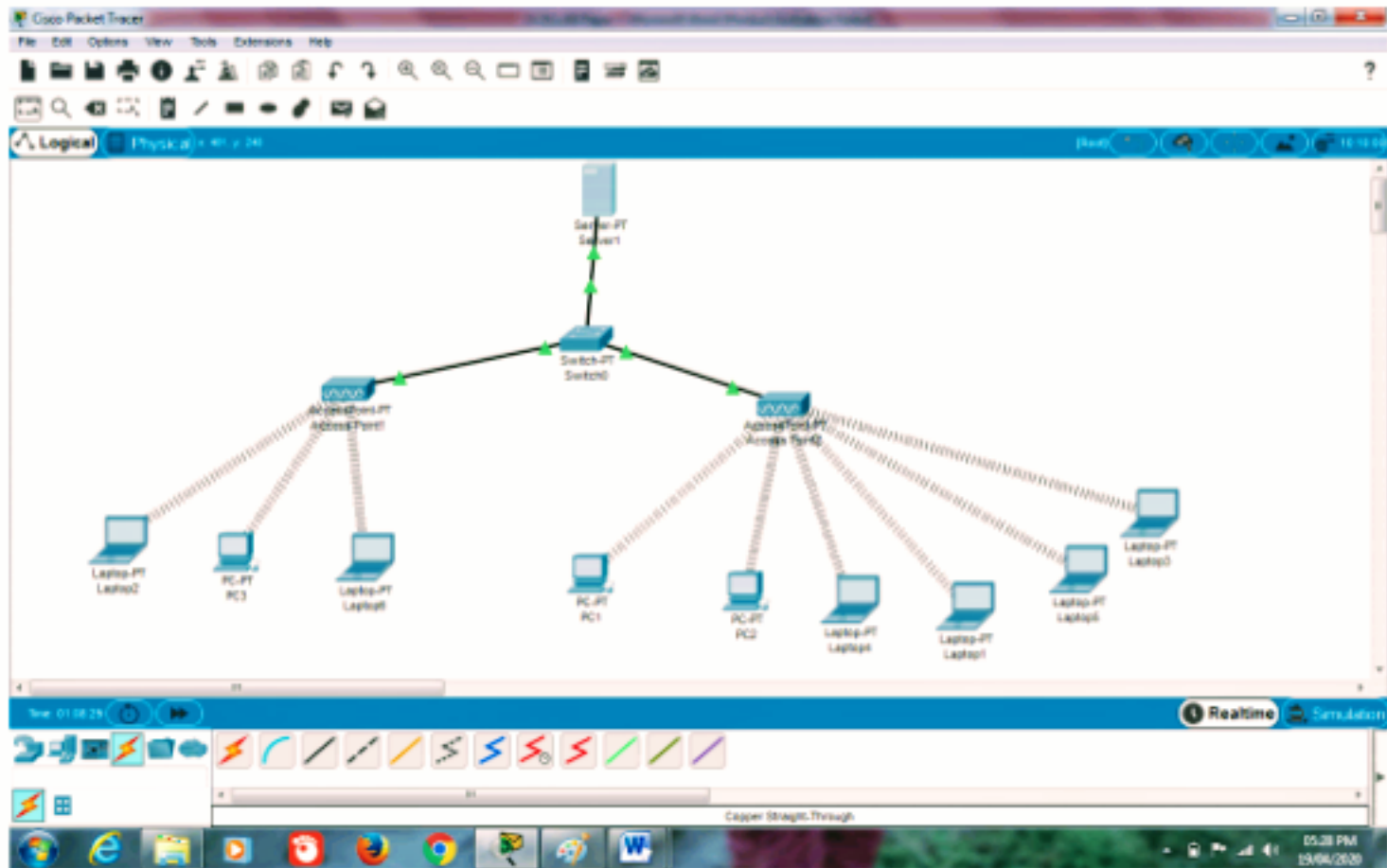
Step 10 make sure that you will be in real mode



The screenshot displays a network simulation environment. A central switch is connected to five laptops, each labeled 'Laptop-1 Scenario 2'. The interface includes a toolbar at the top, a status bar at the bottom, and a right-hand panel with a table of device information and a 'Simulation' button highlighted with a red box.

Device	Device ID	Lead Device	Scenario	Type	Info
0000	---	Scenario 2	Scenario 2	Switch	0:149
0001	Hub00	Hub00	Scenario 2	Hub	0:149
0002	Hub00	Hub00	Scenario 2	Hub	0:149
0003	Hub00	Hub00	Scenario 2	Hub	0:149
0004	Hub00	Hub00	Scenario 2	Hub	0:149
0005	Hub00	Hub00	Scenario 2	Hub	0:149

Simulation

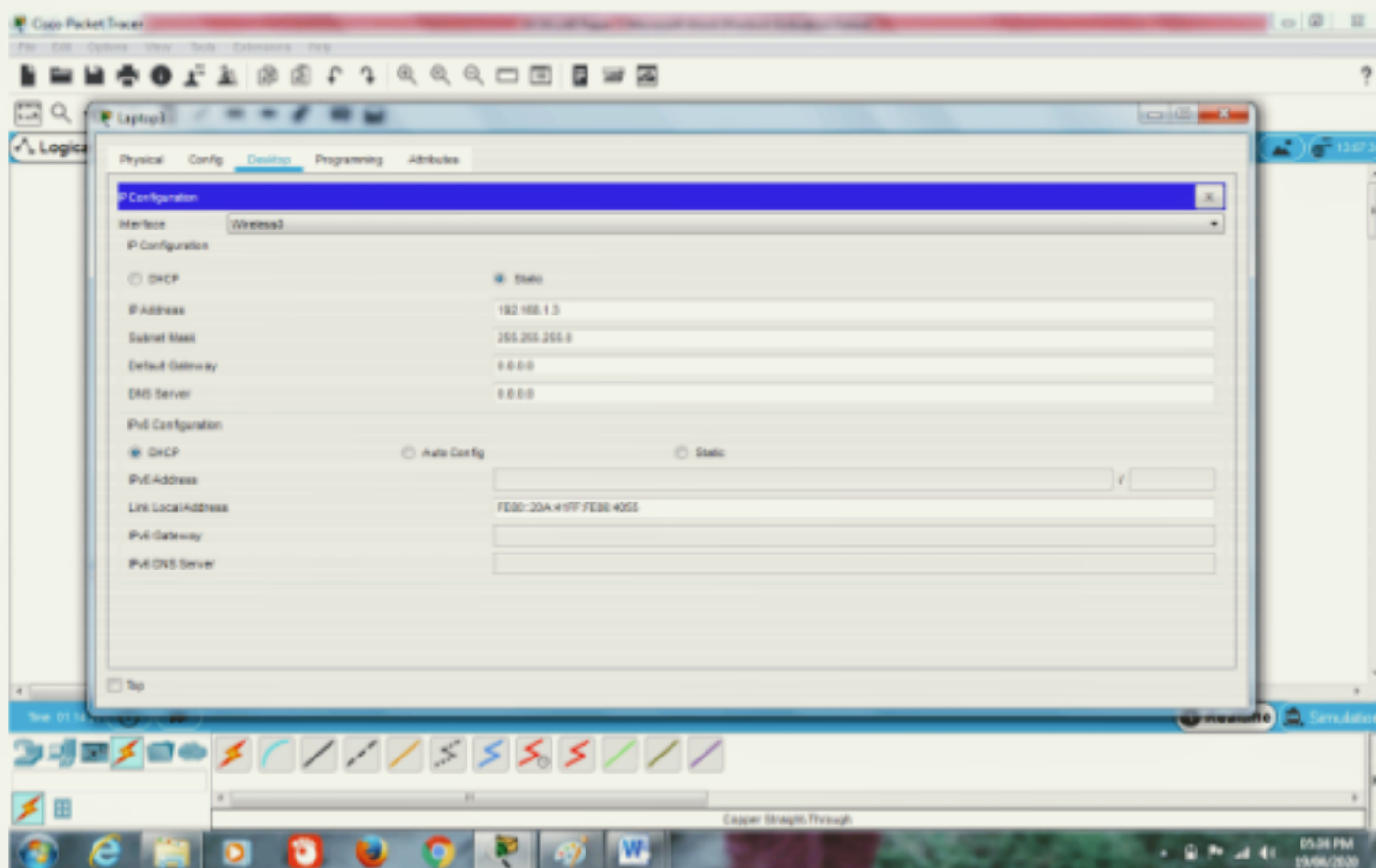
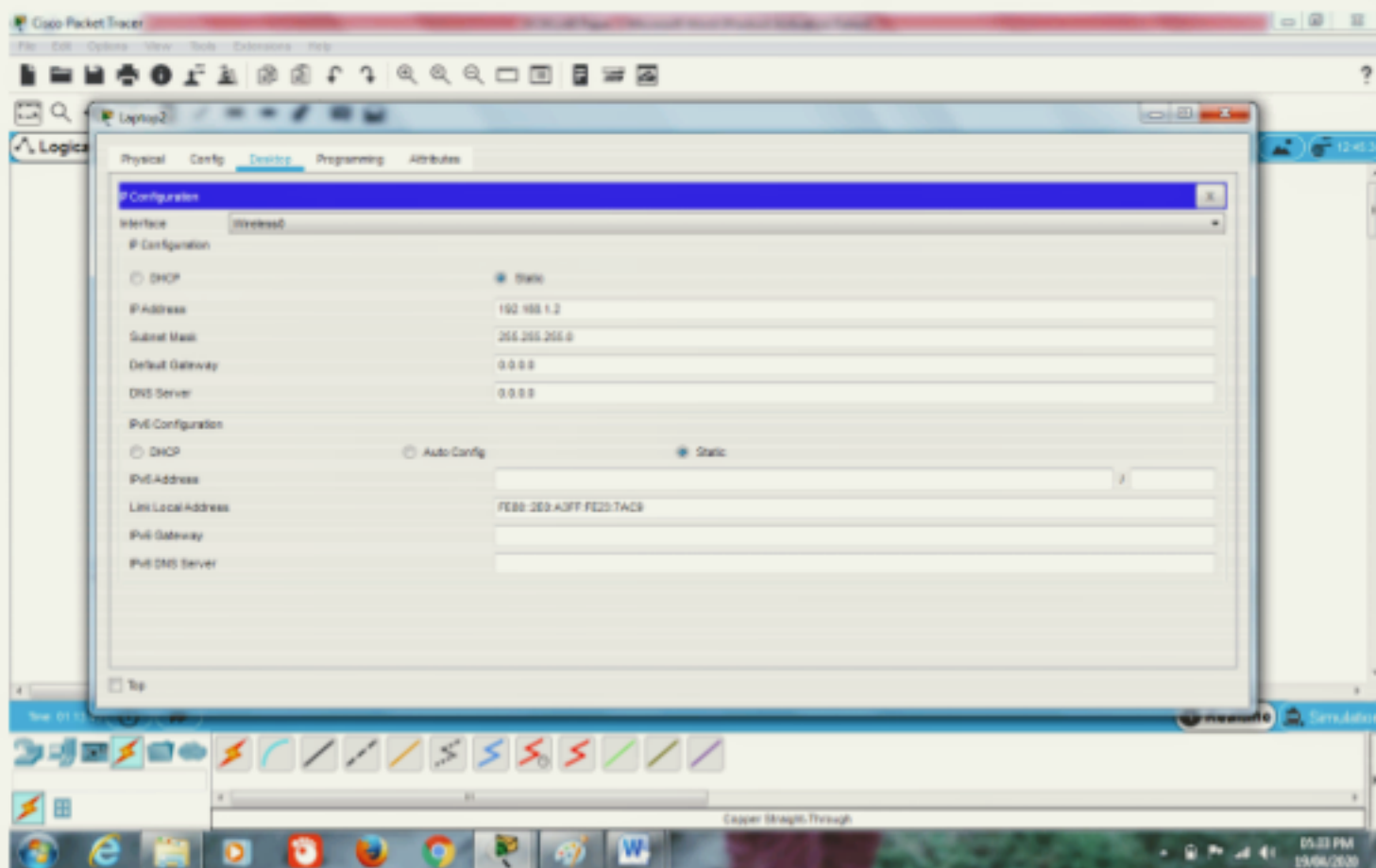


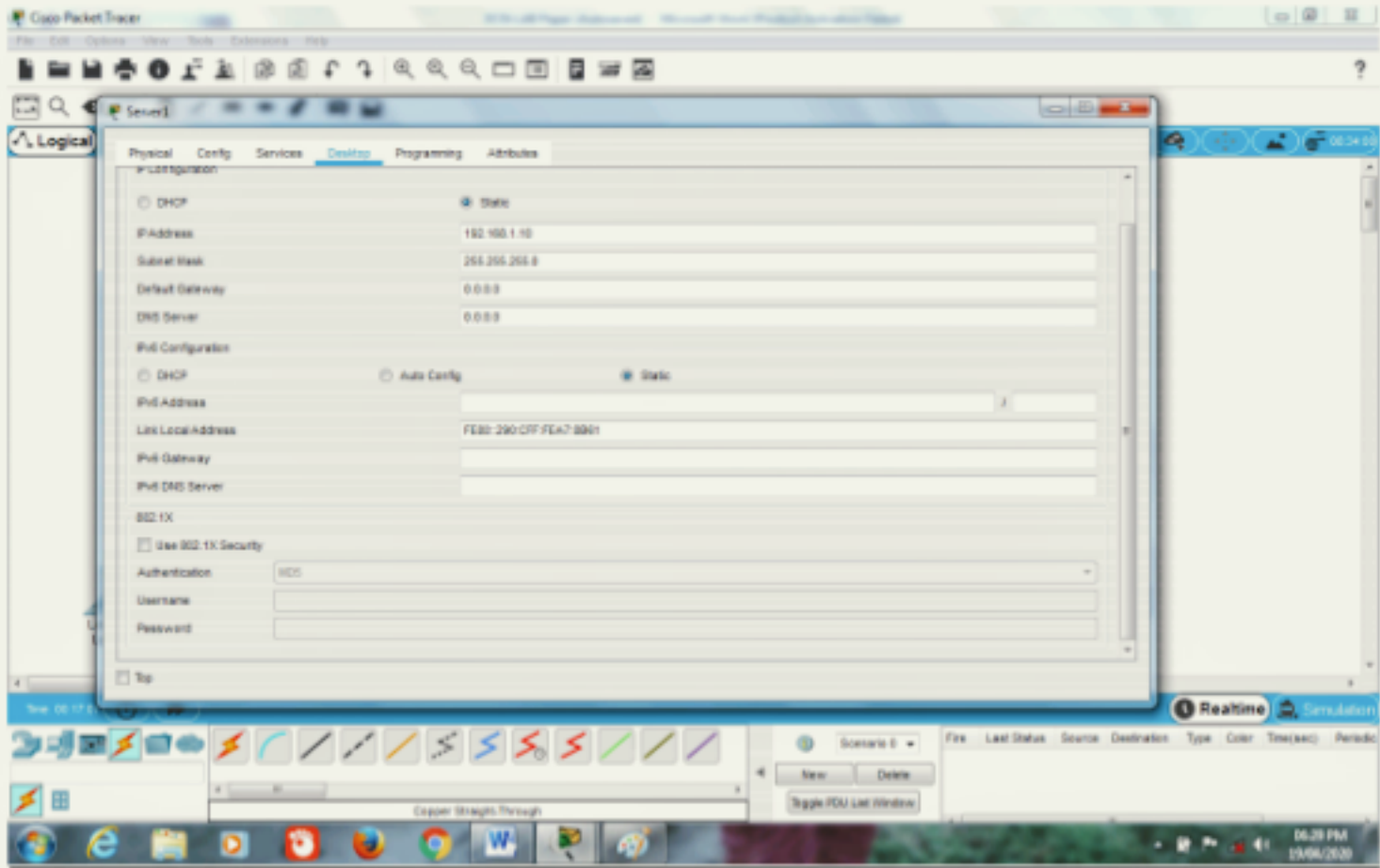
### IP Addresses and Subnet Masks:

The screenshot shows the configuration window for a Laptop in Cisco Packet Tracer. The 'IP Configuration' tab is selected, and the 'Wireless0' interface is chosen. The configuration is set to 'Static'.

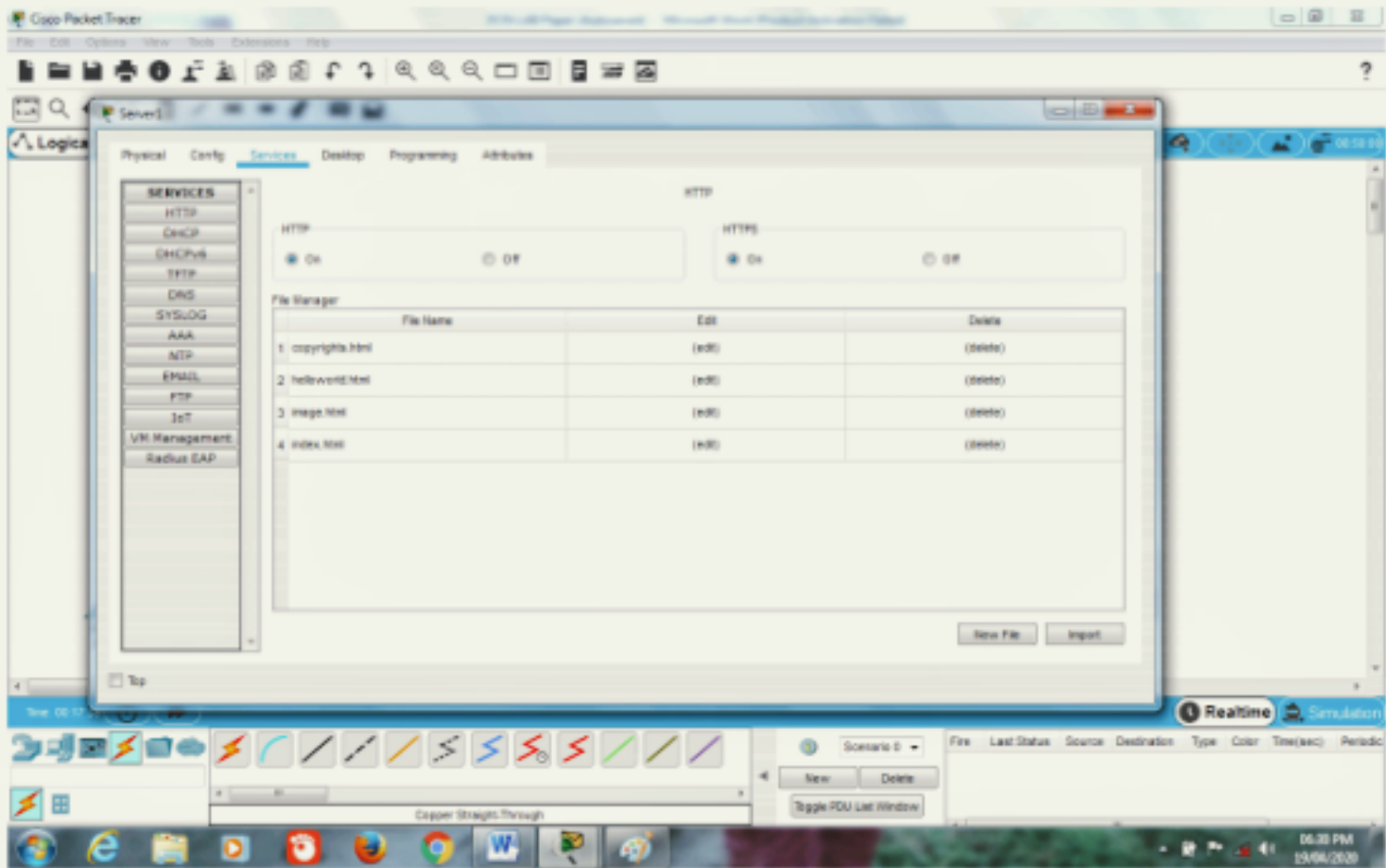
Field	Value
IP Address	192.168.1.1
Subnet Mask	255.255.255.0
Default Gateway	0.0.0.0
DNS Server	0.0.0.0

Below the IP configuration, the IPv6 Configuration section is also visible, with 'Static' selected. The IPv6 Address field contains the value FE80:260:4777:FEA::D4B.





### HTTP in Server1:





## HTTP Server from the Client and Results:

