

Assignment No 2

Object Oriented System Analysis & Design

Name: Muhammad Omer

ID #: 13000

Semester: 8th

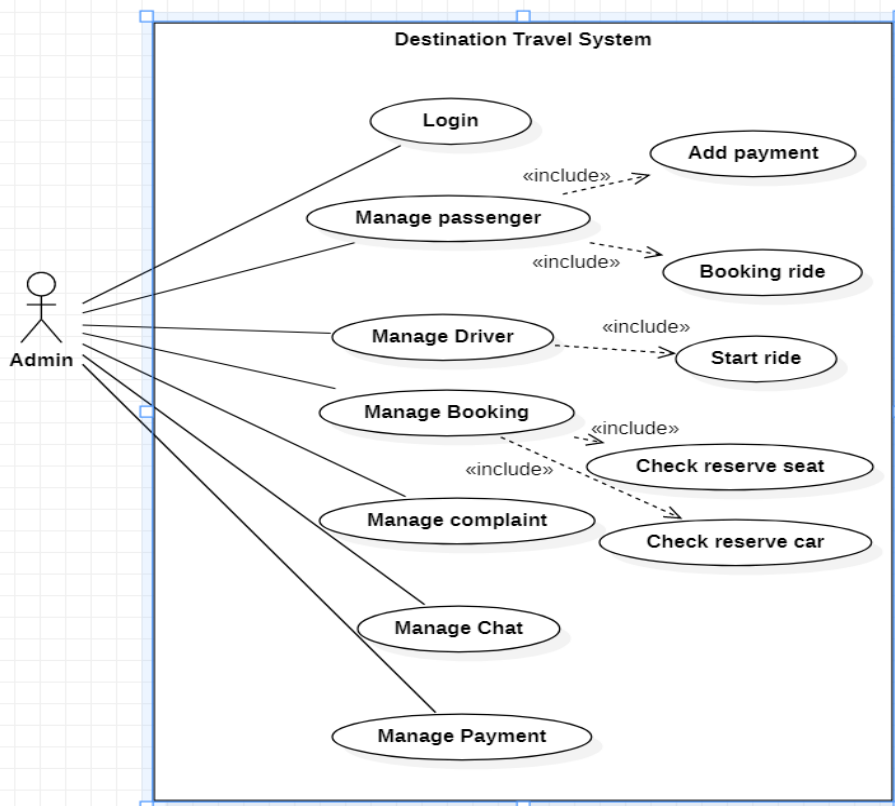
Date: 15 May, 2020

Instructor: Sir Fahim ullah

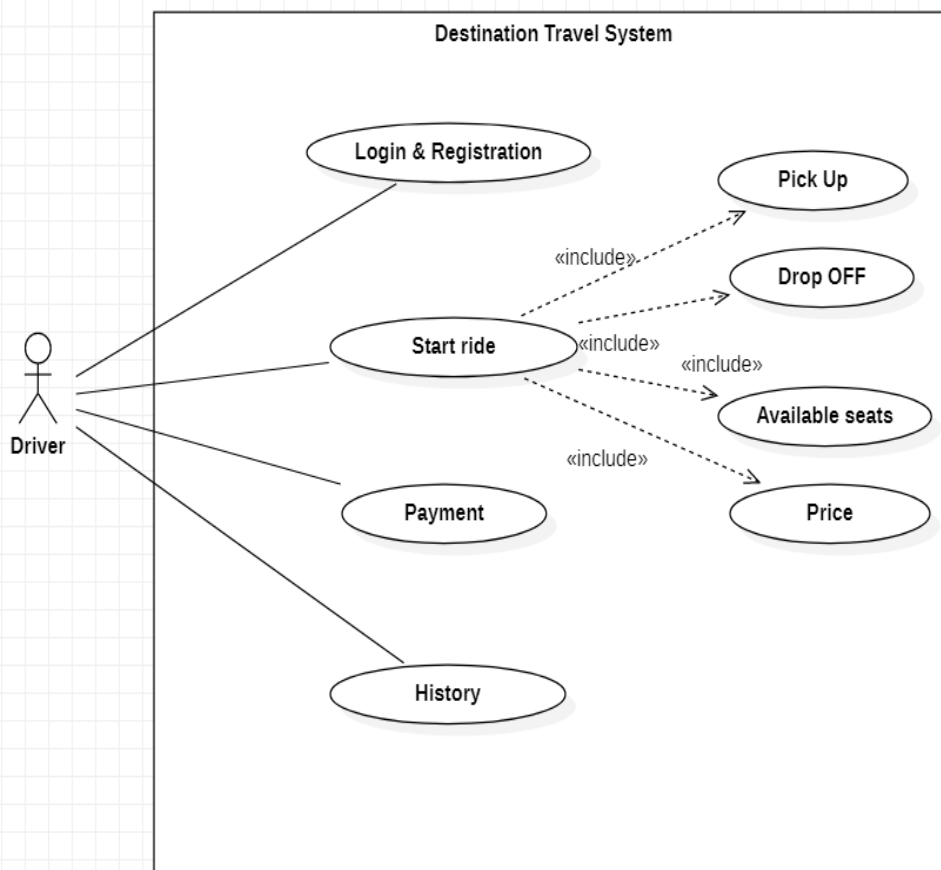
Q1: Draw detailed USECASE DIAGRAM of your FYP Project along with description

Ans:

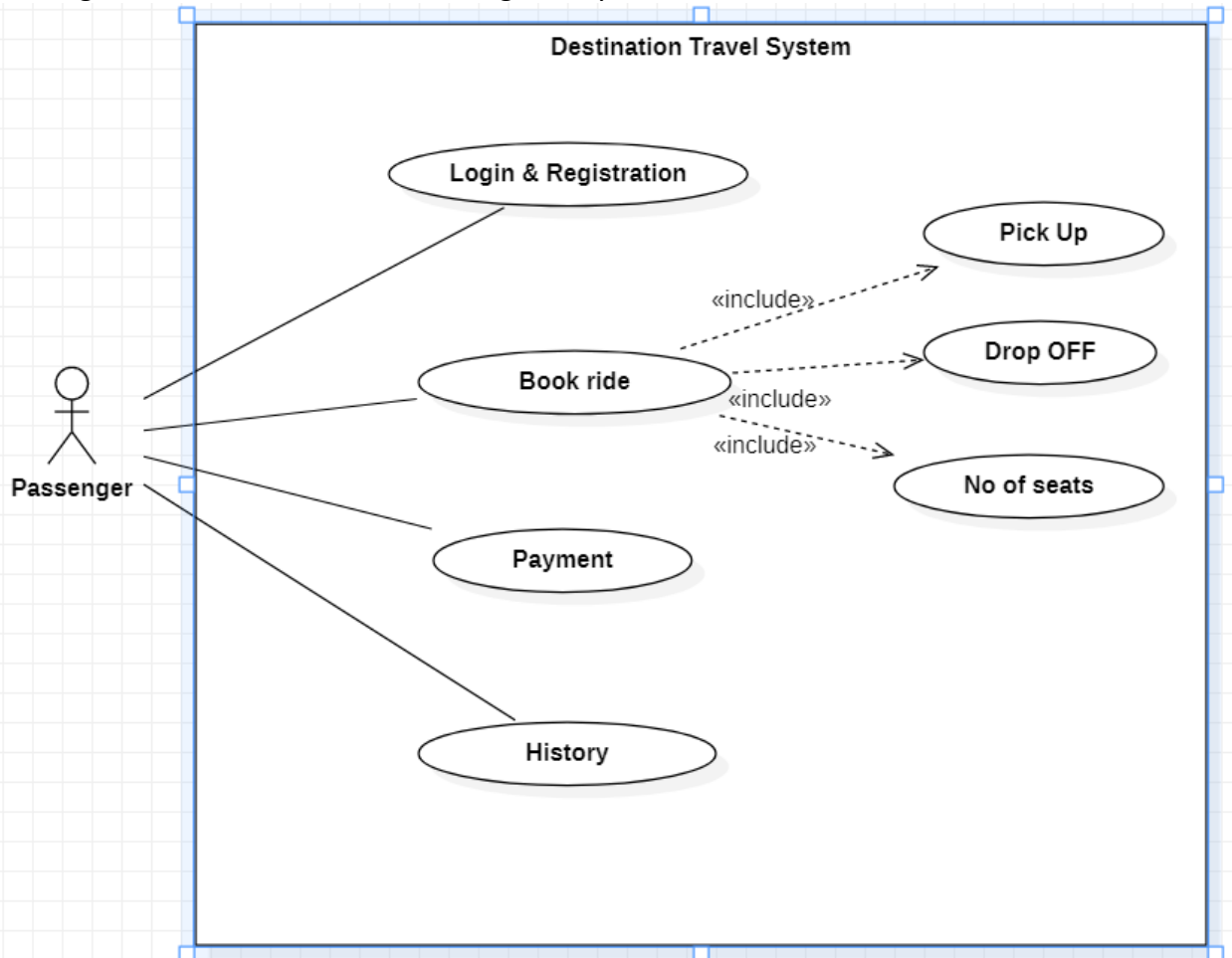
- Admin is a by default entity of the system who will be able to manage the whole functionalities which includes:
- Admin will be able to manage passengers such as updating , deleting , bookings and payments
- Admin will be able to manage drivers such as updating , deleting , bookings and payments
- Admin will be able to manage bookings such as update bookings, delete bookings.
- Admin will be able to manage complaints such as approve complaints or delete complaints.
- Admin will be able to see and monitor all chats.
- Admin will be to monitor all payments.



- Driver is the second important entity of destination travel system with following characteristics.
- Driver will register and login.
- Driver will provide services by starting ride with pick Up location, drop OFF location, available seats and price per seat.
- Driver can check his payment history such as incomes and withdrawls.
- Driver can look over all his rides history.



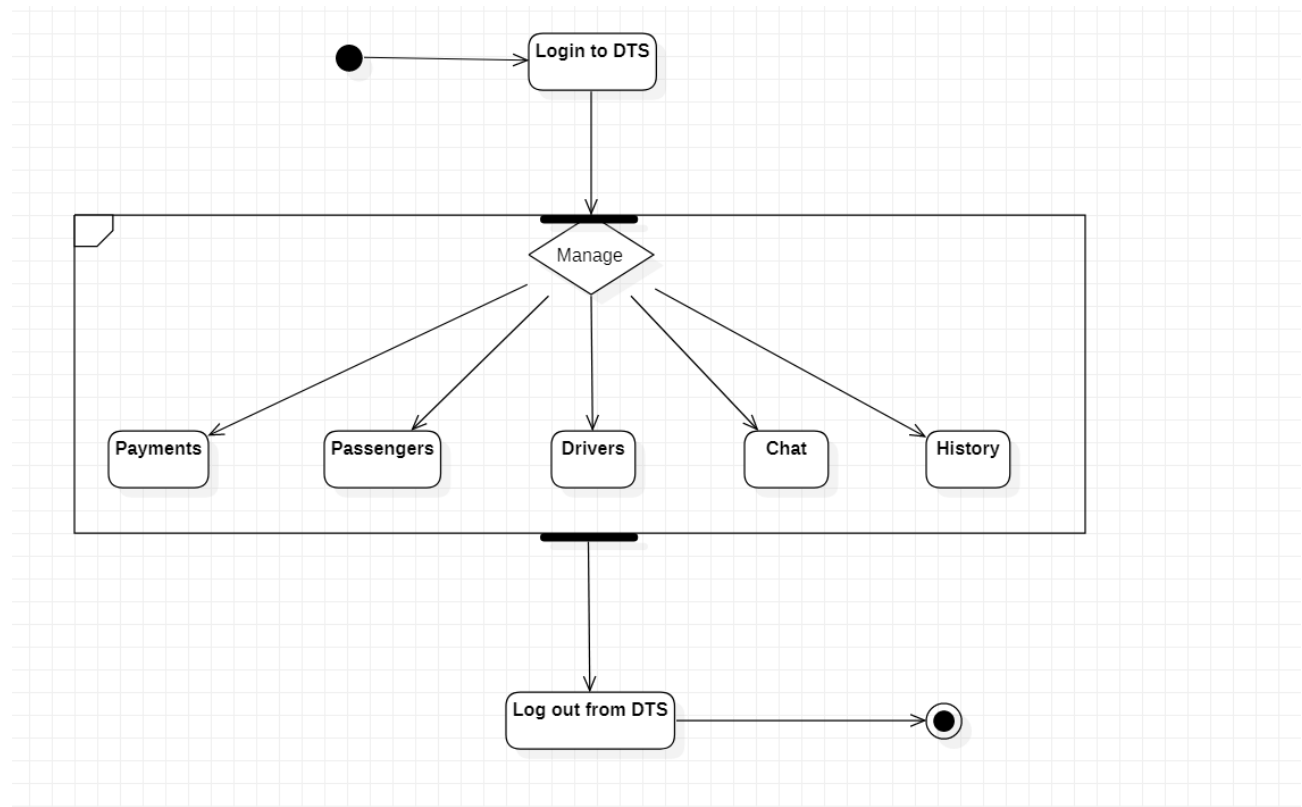
- Passenger is the 3rd most important entity of destination travel system which will have following characteristics.
- Passenger will register and login.
- Passenger will be able to book ride by providing pickup location, dropoff location and No of seats.
- Passenger will be able to pay for rides on monthly basis.
- Passenger will be able to see his booking history.



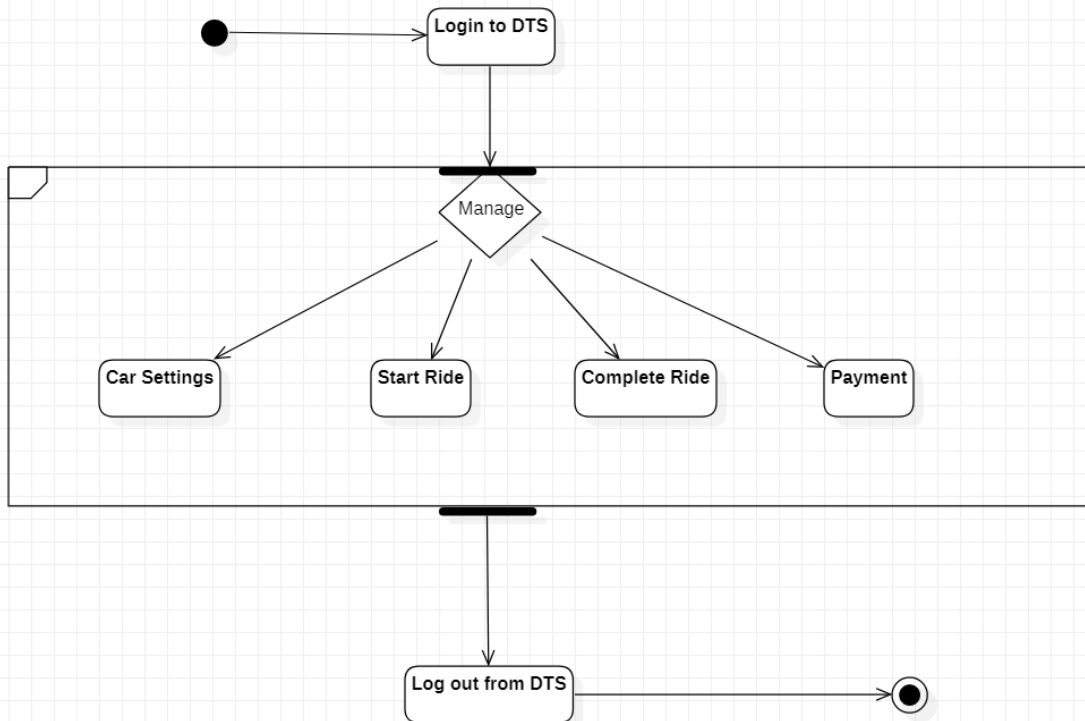
Q2: Draw detailed ACTIVITY DIAGRAMS of your FYP Project along with description

Ans:

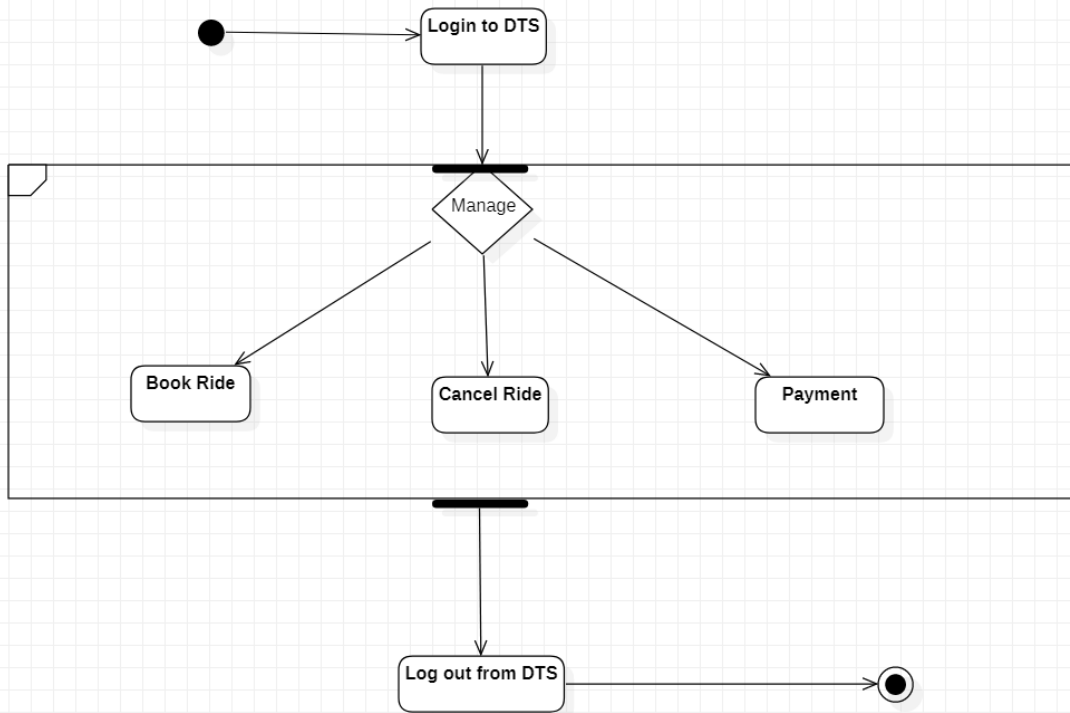
- Admin is a by default entity of the system who will be able to manage the whole functionalities which includes:
- Admin will be able to manage passengers such as updating , deleting , bookings and payments
- Admin will be able to manage drivers such as updating , deleting , bookings and payments
- Admin will be able to manage bookings such as update bookings, delete bookings.
- Admin will be able to manage complaints such as approve complaints or delete complaints.
- Admin will be able to see and monitor all chats.
- Admin will be to monitor all payments.



- Driver is the second important entity of destination travel system with following characteristics.
- Driver will register and login.
- Driver will provide services by starting ride with pick Up location, drop OFF location, available seats and price per seat.
- Driver can check his payment history such as incomes and withdrawls.
- Driver can look over all his rides history.



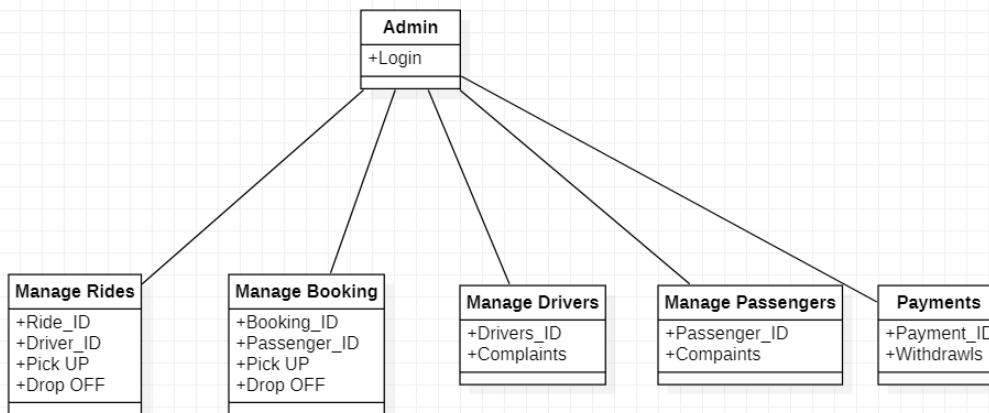
- Passenger is the 3rd most important entity of destination travel system which will have following characteristics.
- Passenger will register and login.
- Passenger will be able to book ride by providing pickup location, dropoff location and No of seats.
- Passenger will be able to pay for rides on monthly basis.
- Passenger will be able to see his booking history.



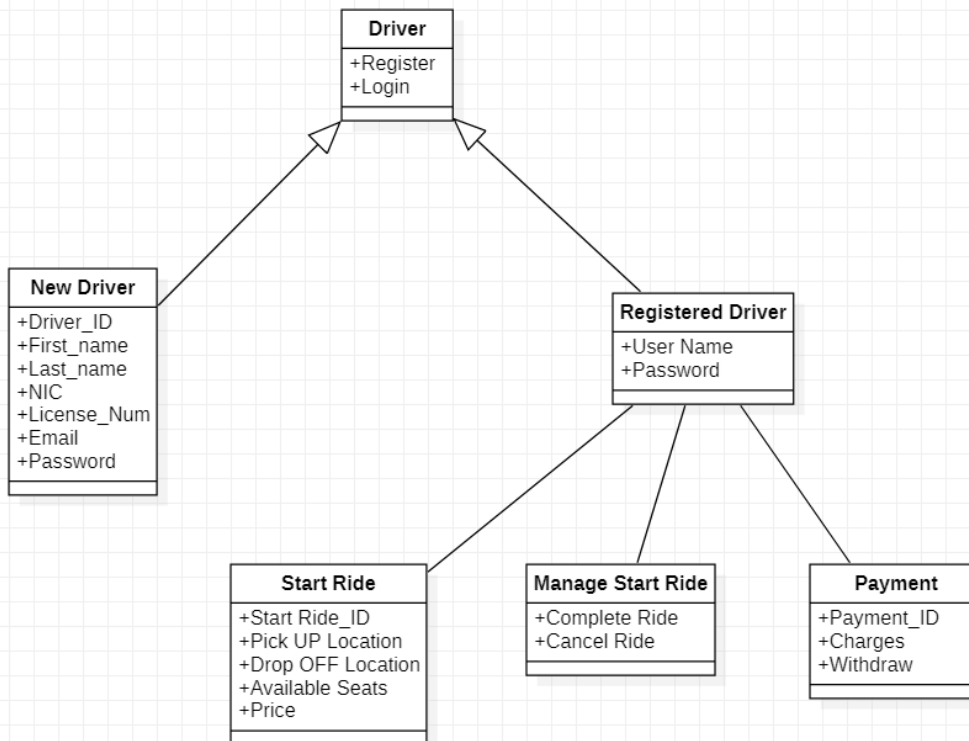
Q3: Draw detailed CLASS DIAGRAMS of your FYP Project along with description

Ans:

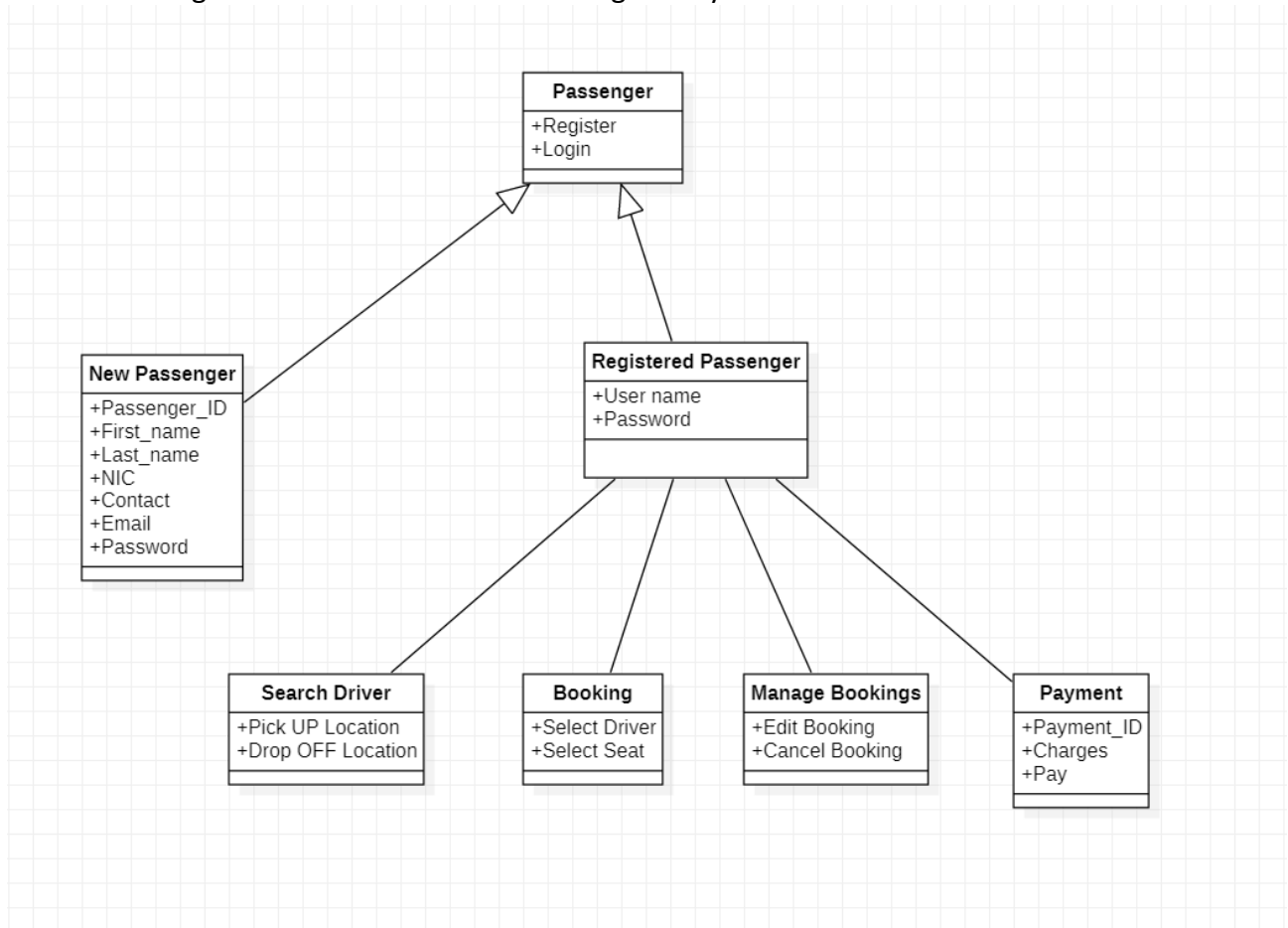
- Admin is a by default entity of the system who will be able to manage the whole functionalities which includes:
- Admin will be able to manage passengers such as updating , deleting , bookings and payments
- Admin will be able to manage drivers such as updating , deleting , bookings and payments
- Admin will be able to manage bookings such as update bookings, delete bookings.
- Admin will be able to manage complaints such as approve complaints or delete complaints.
- Admin will be able to see and monitor all chats.
- Admin will be to monitor all payments.



- Driver is the second important entity of destination travel system with following characteristics.
- Driver will register and login.
- Driver will provide services by starting ride with pick Up location, drop OFF location, available seats and price per seat.
- Driver can check his payment history such as incomes and withdrawls.
- Driver can look over all his rides history.



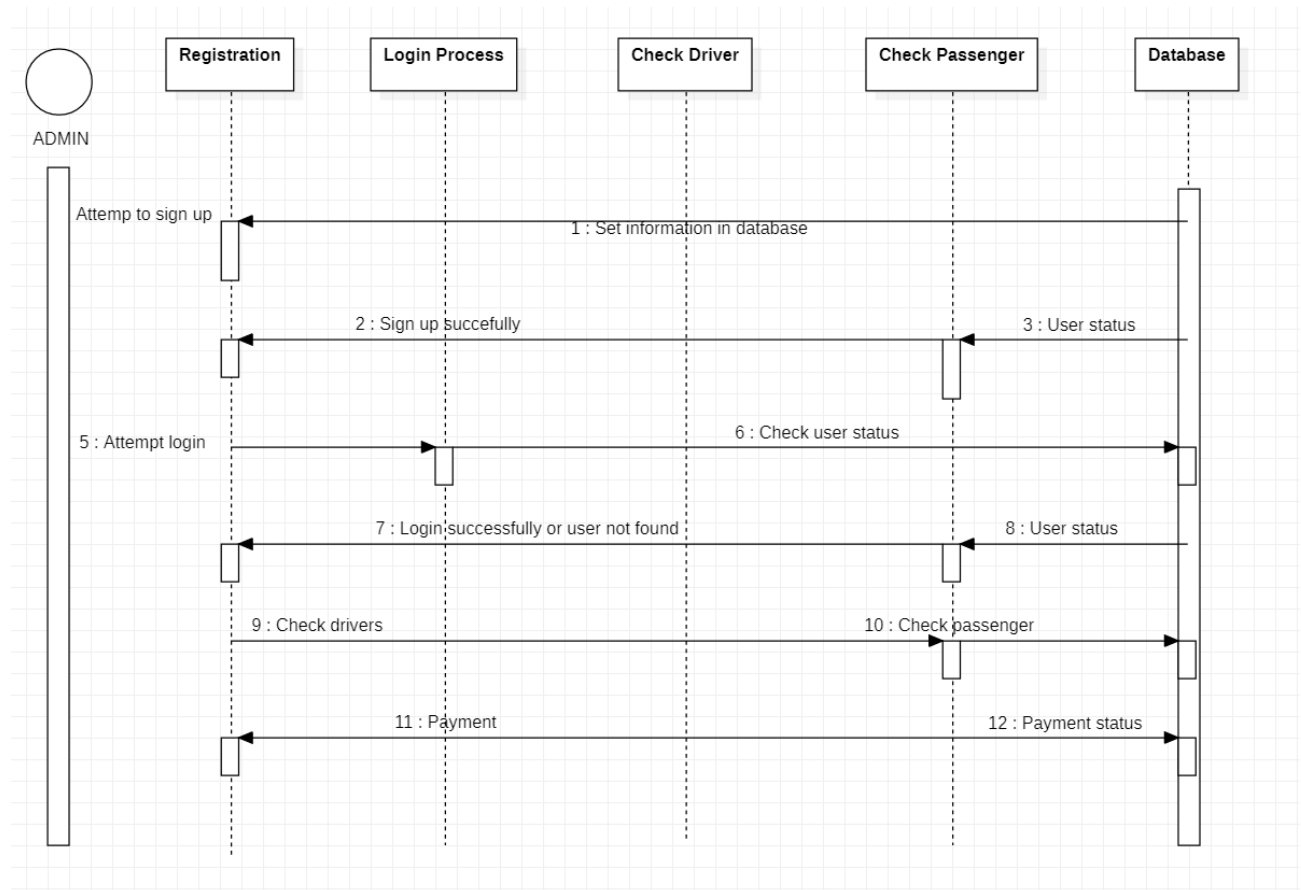
- Passenger is the 3rd most important entity of destination travel system which will have following characteristics.
- Passenger will register and login.
- Passenger will be able to book ride by providing pickup location, dropoff location and No of seats.
- Passenger will be able to pay for rides on monthly basis.
- Passenger will be able to see his booking history.



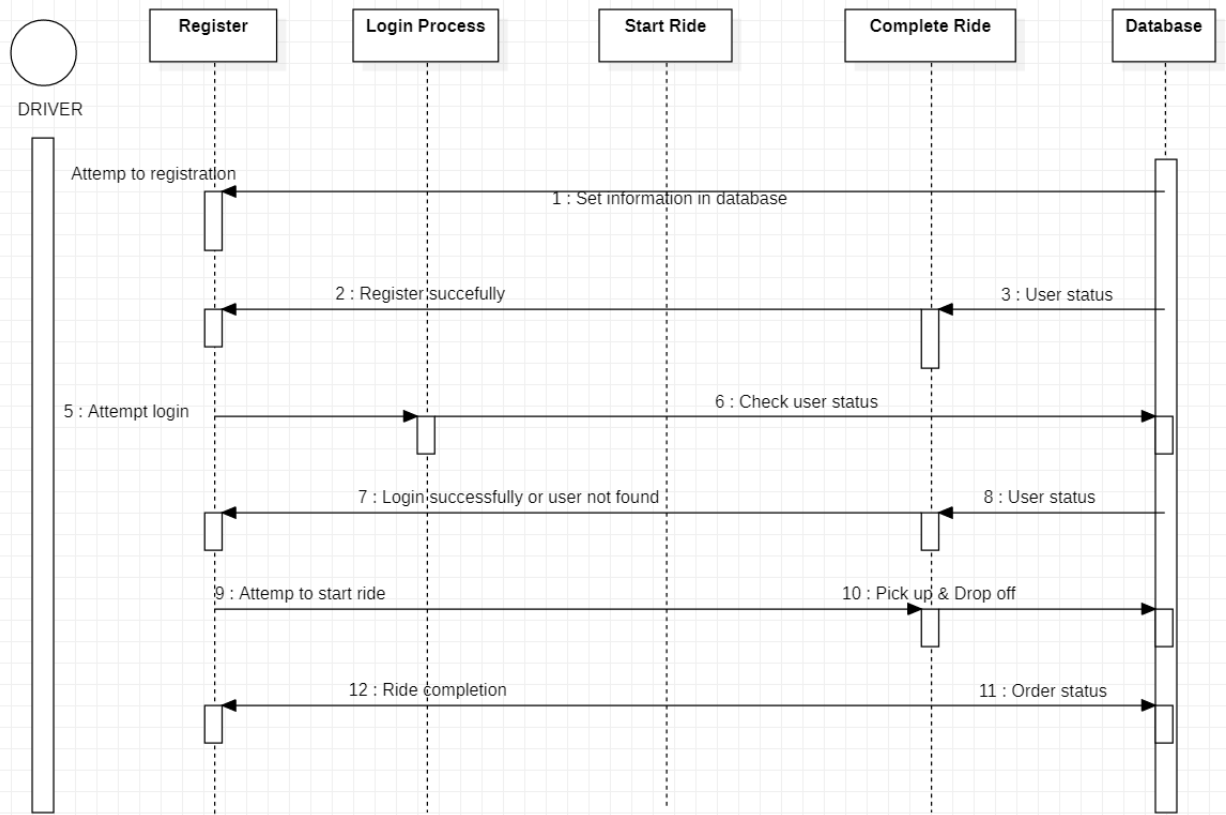
Q4: Draw detailed SEQUENCE DIAGRAMS of your FYP Project along with description

Ans:

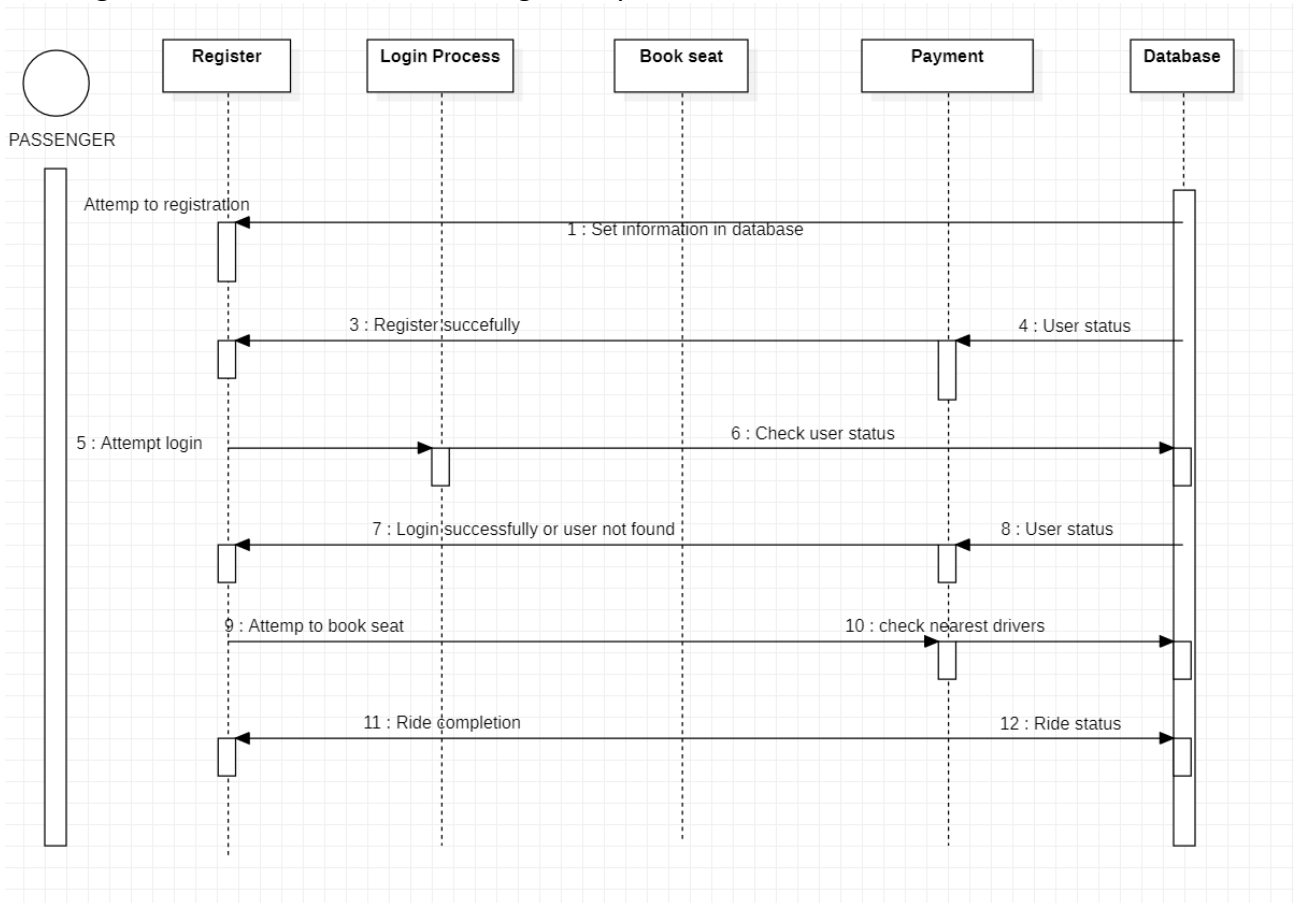
- Admin is a by default entity of the system who will be able to manage the whole functionalities which includes:
- Admin will be able to manage passengers such as updating , deleting , bookings and payments
- Admin will be able to manage drivers such as updating , deleting , bookings and payments
- Admin will be able to manage bookings such as update bookings, delete bookings.
- Admin will be able to manage complaints such as approve complaints or delete complaints.
- Admin will be able to see and monitor all chats.
- Admin will be to monitor all payments.



- Driver is the second important entity of destination travel system with following characteristics.
- Driver will register and login.
- Driver will provide services by starting ride with pick Up location, drop OFF location, available seats and price per seat.
- Driver can check his payment history such as incomes and withdrawls.
- Driver can look over all his rides history.



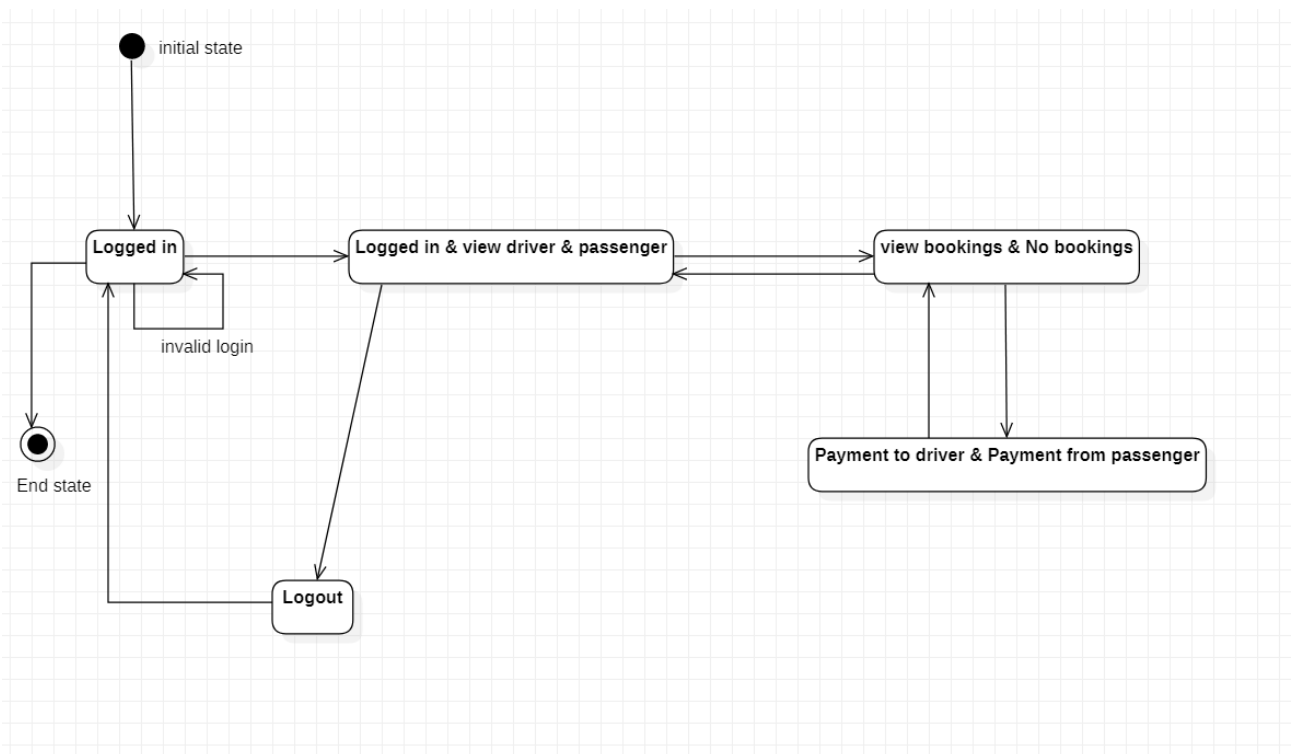
- Passenger is the 3rd most important entity of destination travel system which will have following characteristics.
- Passenger will register and login.
- Passenger will be able to book ride by providing pickup location, dropoff location and No of seats.
- Passenger will be able to pay for rides on monthly basis.
- Passenger will be able to see his booking history.



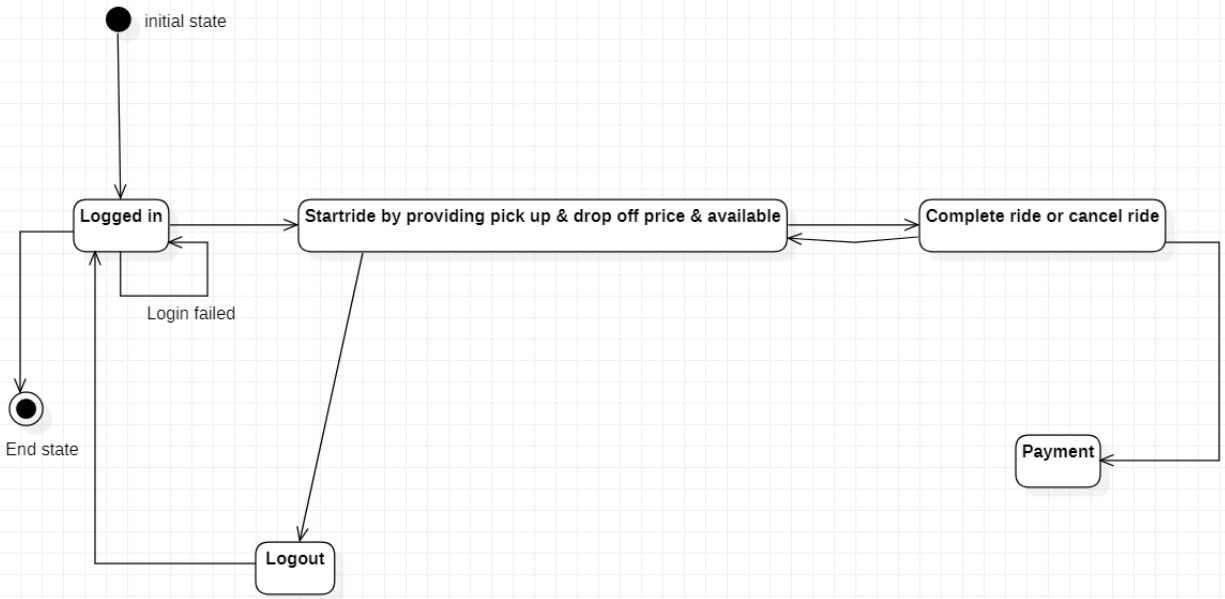
Q5: Draw detailed STATE CHART DIAGRAM of your FYP Project along with description

Ans:

- Admin is a by default entity of the system who will be able to manage the whole functionalities which includes:
- Admin will be able to manage passengers such as updating , deleting , bookings and payments
- Admin will be able to manage drivers such as updating , deleting , bookings and payments
- Admin will be able to manage bookings such as update bookings, delete bookings.
- Admin will be able to manage complaints such as approve complaints or delete complaints.
- Admin will be able to see and monitor all chats.
- Admin will be to monitor all payments.



- Driver is the second important entity of destination travel system with following characteristics.
- Driver will register and login.
- Driver will provide services by starting ride with pick Up location, drop OFF location, available seats and price per seat.
- Driver can check his payment history such as incomes and withdrawls.
- Driver can look over all his rides history.



- Passenger is the 3rd most important entity of destination travel system which will have following characteristics.
- Passenger will register and login.
- Passenger will be able to book ride by providing pickup location, dropoff location and No of seats.
- Passenger will be able to pay for rides on monthly basis.
- Passenger will be able to see his booking history.

