

Page = 6

-> In the Student entity Student-Name, Student-ID and address is the column of Student table.

-> In the course entity the Course-Name and Course number is the column of course table.

-> In the CLASS entity the courses-Name, Section-Number, Number of reg, and class, time, date is the column of the class table

-> In SEAT entity the Seat-Number and Seat-Position is the column of the table

Q3 Convert the following Conceptual model to Relational model?

Ans

Student		
ID	NAME	Add

COURSE	
Course Name	Course number

SEAT	
Seat No.	Seat Position

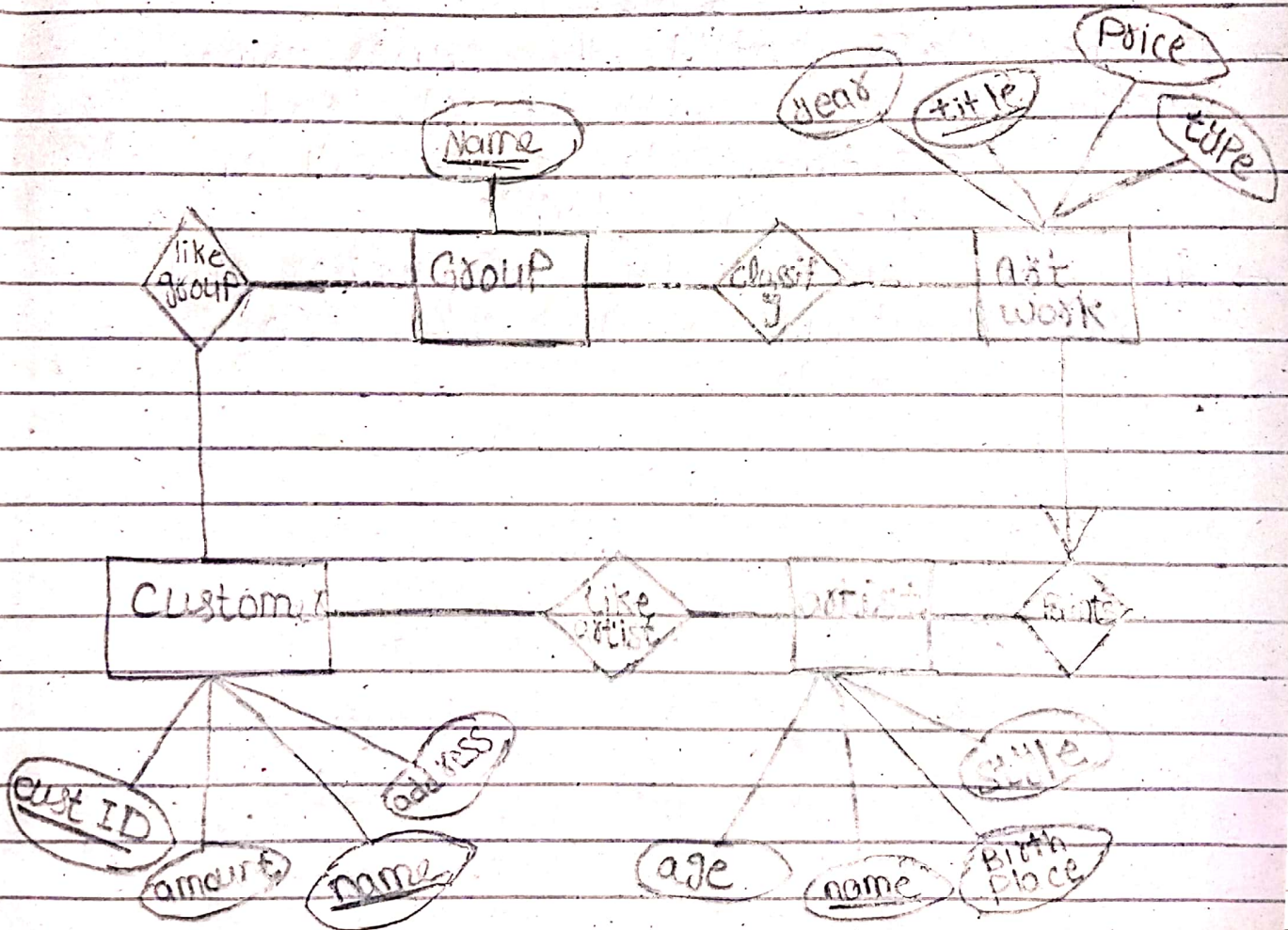
CLASS			
course Name	Sec number	num of s	class time

P.T.O



Q2:- Draw an ERD from the following business rule: use proper notation for the type of attributes

Ans:





Q1 (Part 5):-

Ans: Mandatory one using ER diagram

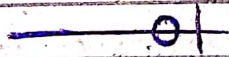
ANS:  
}



(ii) Mandatory many using ER diagram



(iii) Optional one using ER diagram



(iv) Optional many using ER diagram



Q1 (Part 6)

Ans:- Need of backup:-

The DBMS should provide backup facilities that produce a backup copy of the entire database. The copy should be stored in a secured location, where it is protected from loss or damage.

Q2 I

2019  
V T F S  
6 7 8  
13 14 15  
20 21 22  
27 28 29



# Data Integrity

Data integrity is the completeness, correctness and consistency of data. This can be indicated by the absences or between two update of a data record.

XXXXX

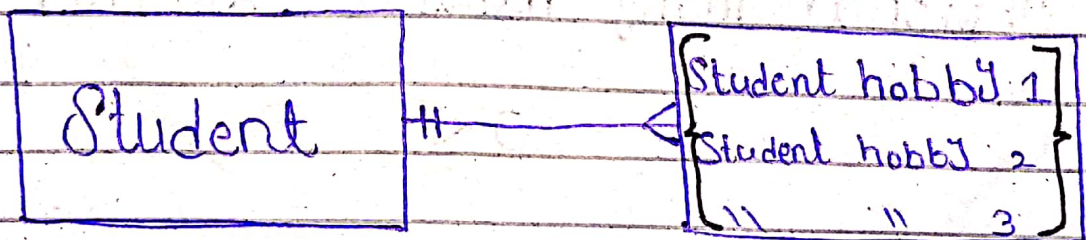
XXXXX

Q 1 (Part 3)

Ans: Multivalued attribute:

A multivalued attribute, is that entity which have more than one attribute at one time.

Multivalued attribute representation in conceptual model:-



In this example a student with a multiple hobbies. Mean single entity with a multivalued attributes.

XXXXX

XXXXX



Semester = 4th  
Degree = BS (SE)  
Section = A

Q1 (Part 1)

Ans

Candidate Key:

A candidate key is an attribute or combination of attributes and ~~or~~ column or a set of column in a table that can uniquely identify.

So in the following table the Student ID and the Cell Phone number is the candidate key, because the ID and the Cell Phone number can uniquely identify the student.

XXXXXX

XXXX

Q1 (Part 2)

Ans

Data redundancy:

Data redundancy is a condition created within a data base or data storage technology in which the same piece of data is held in two separate places.

For Example

Two different field with a single data base.