



**NAME: Sayed Muslim shah**

**ID#: 14856**

**MODULE: Bachelors {Software Engineering}**

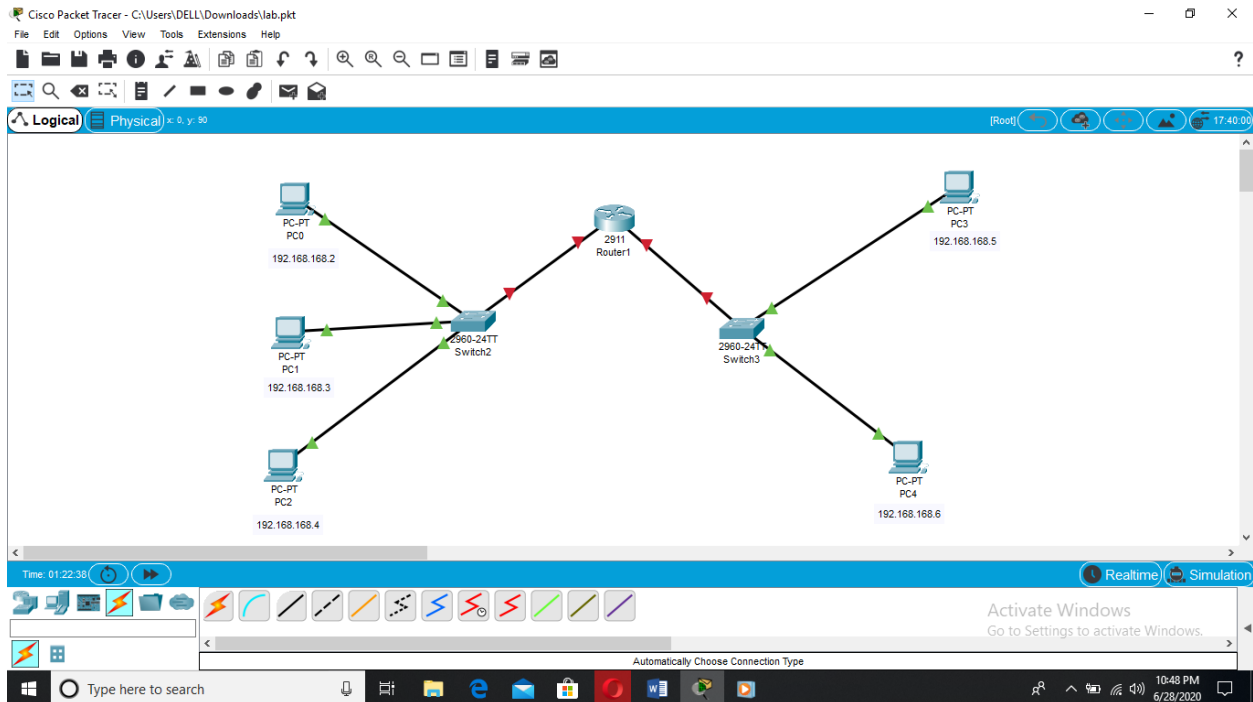
**SEMESTER: 4**

**SECTION: B**

**SUBJECT: Computer Communication & Networks (lab)**

**INSTRUCTOR: MR. Mansoor Qadir**

## ANSWER:



**Router hostname: muslim**  
**Password: 14856**

```
Router1
Physical Config CLI Attributes
IOS Command Line Interface

Cisco IOS Software, C2900 Software (C2900-UNIVERSALK9-M), Version 15.1(4)MS, RELEASE SOFTWARE (fc2) Technical Support: http://www.cisco.com/techsupport
Copyright (c) 1986-2007 by Cisco Systems, Inc.
Compiled Wed 18-Jul-07 04:52 by pt_team
Image text-base: 0x2100F918, data-base: 0x24729040

This product contains cryptographic features and is subject to United States and local country laws governing import, export, transfer and use. Delivery of Cisco cryptographic products does not imply third-party authority to import, export, distribute or use encryption. Importers, exporters, distributors and users are responsible for compliance with U.S. and local country laws. By using this product you agree to comply with applicable laws and regulations. If you are unable to comply with U.S. and local laws, return this product immediately.

A summary of U.S. laws governing Cisco cryptographic products may be found at:
http://www.cisco.com/wvl/export/crypto/tool/stqrg.html

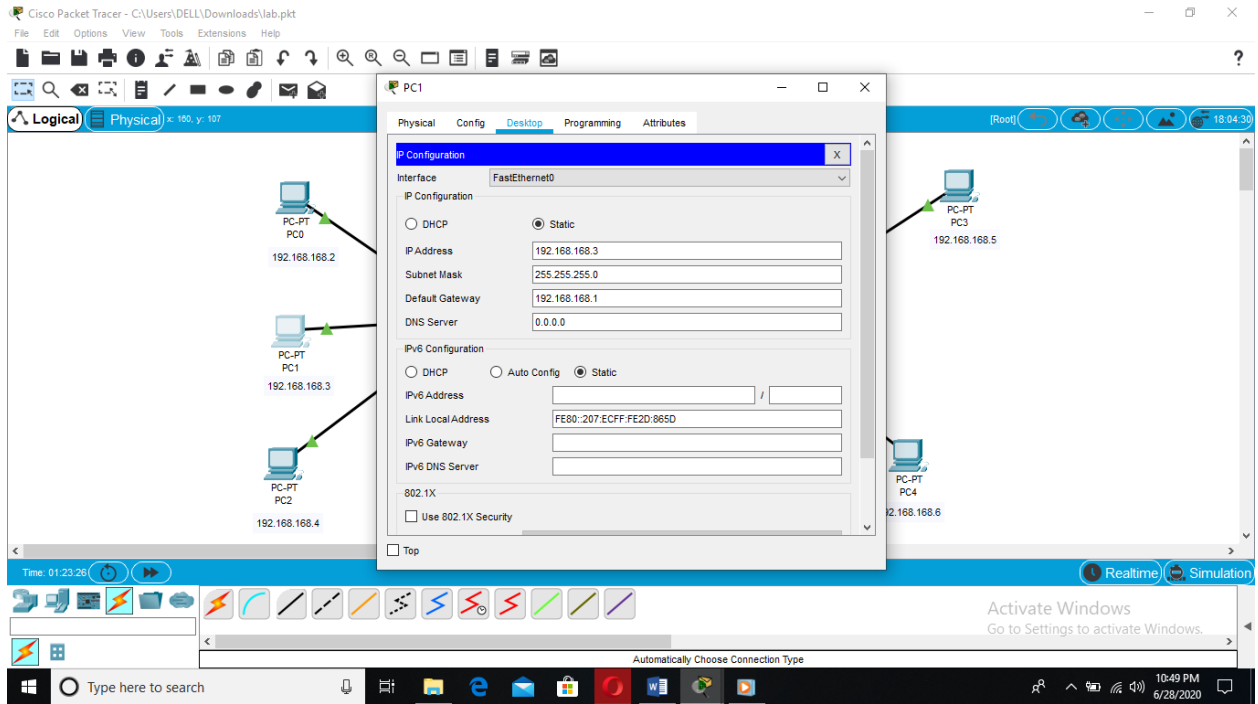
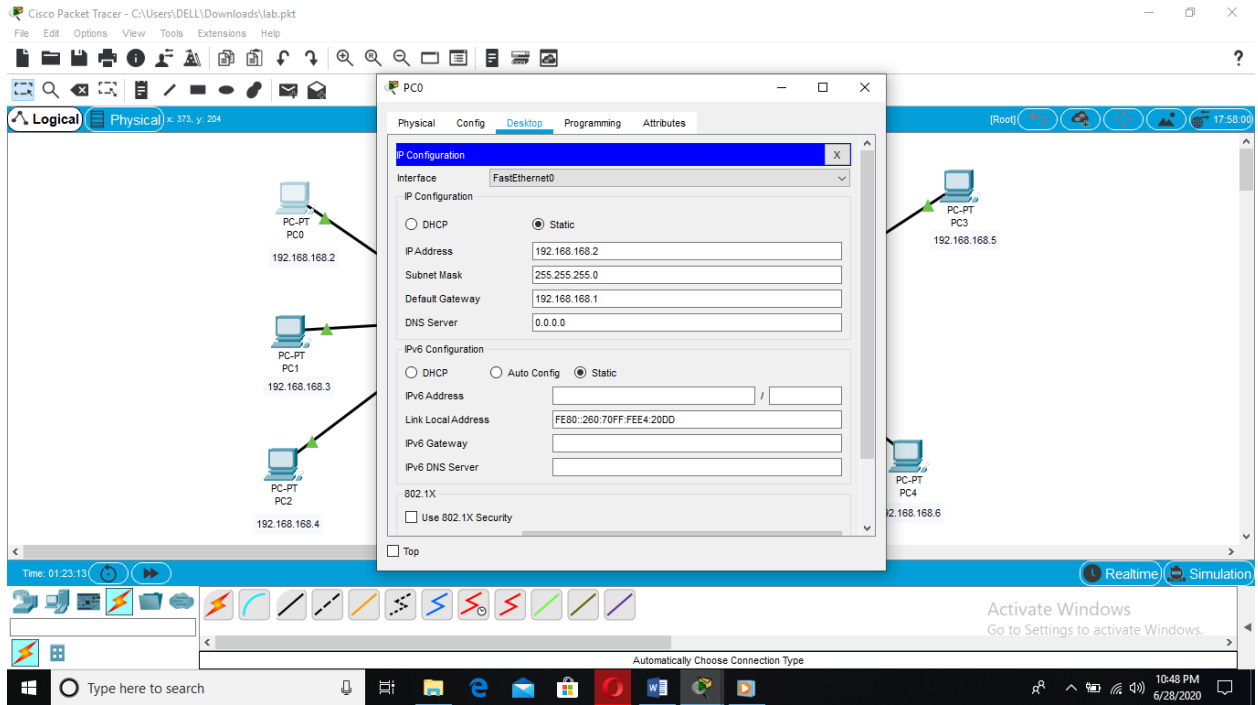
If you require further assistance please contact us by sending email to
export@cisco.com.

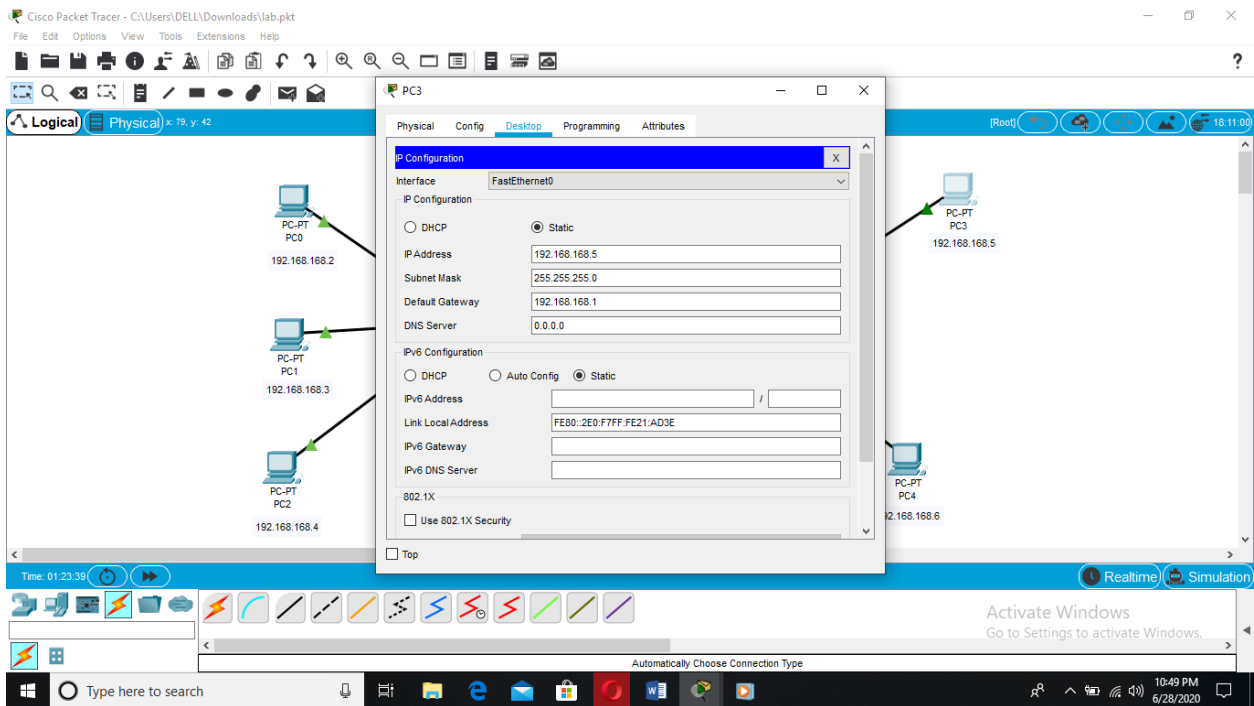
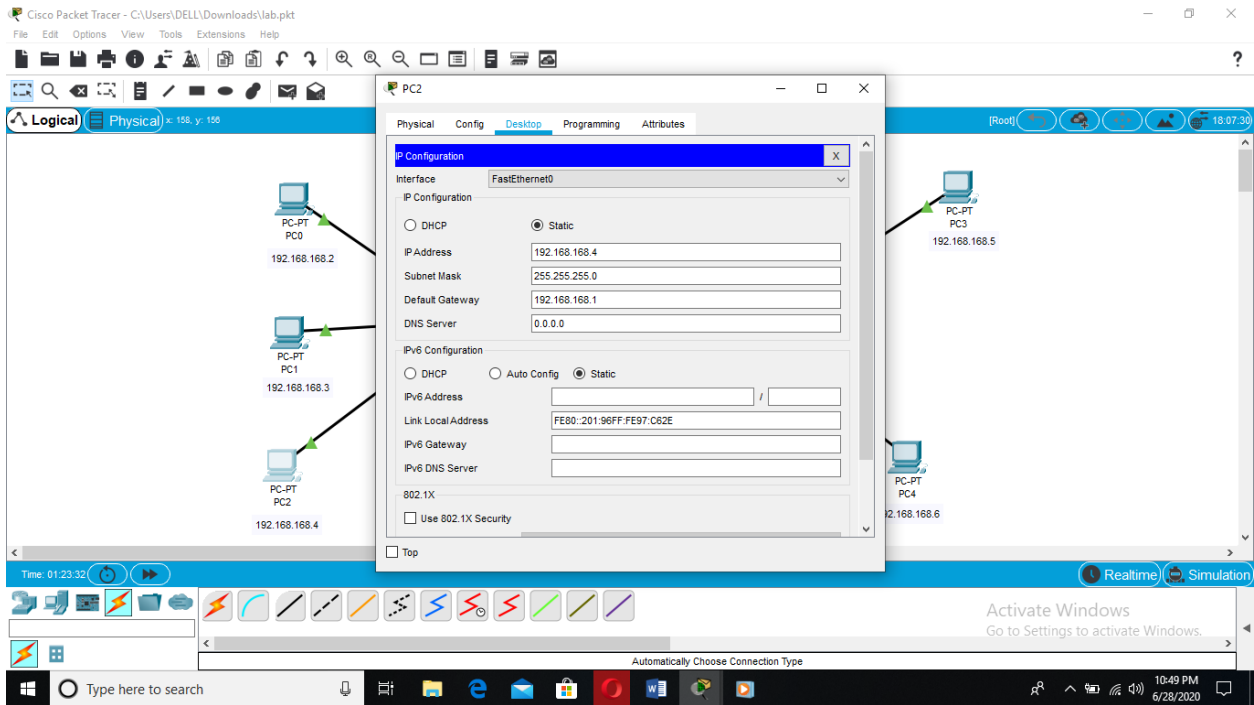
Cisco CISC02911/K9 (revision 1.0) with 491520K/32768K bytes of memory.
Processor board ID FX153400RS
3 Gigabit Ethernet interfaces
DRAM configuration is 64 bits wide with parity disabled.
355K bytes of non-volatile configuration memory.
249856K bytes of ATA System CompactFlash 0 (Read/Write)

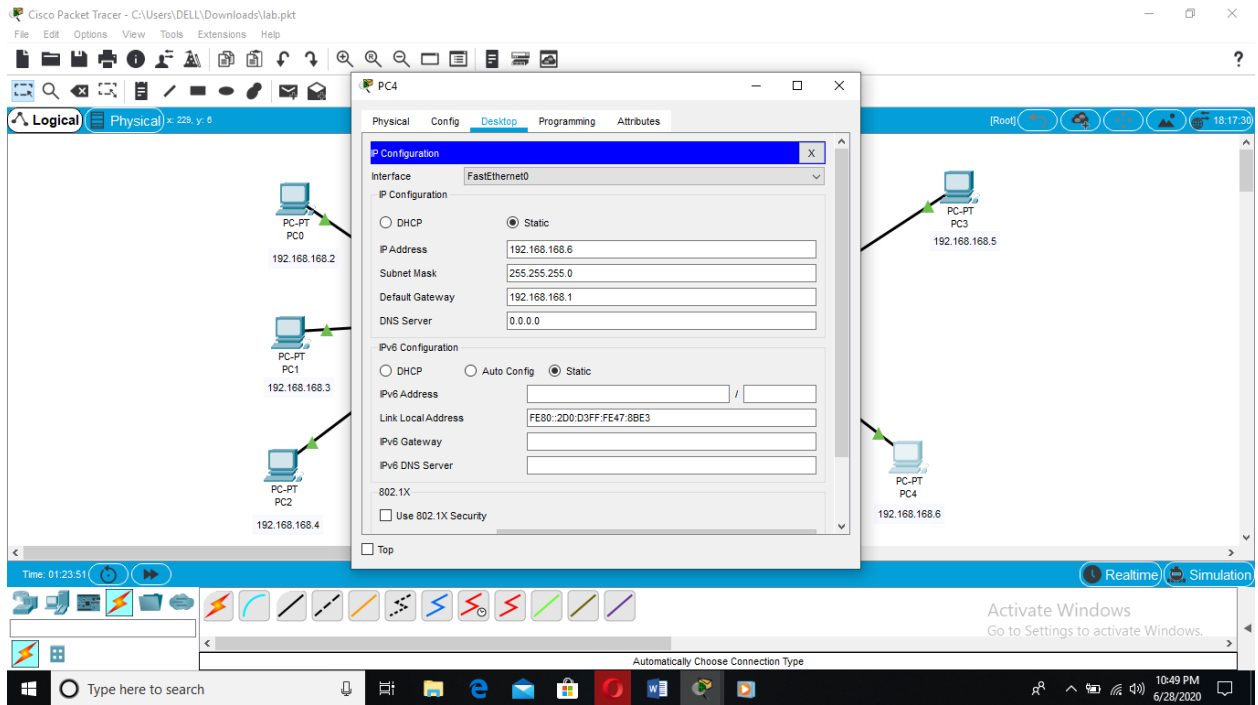
Press RETURN to get started!

User Access Verification
Password:
muslim>
```

The screenshot shows the Cisco IOS Command Line Interface (CLI) for Router1. The interface displays the router's boot-up sequence, including the IOS version (15.1(4)MS), copyright information, and hardware details. The user has entered the hostname 'muslim' and the password '14856'.







Thank you, sir,