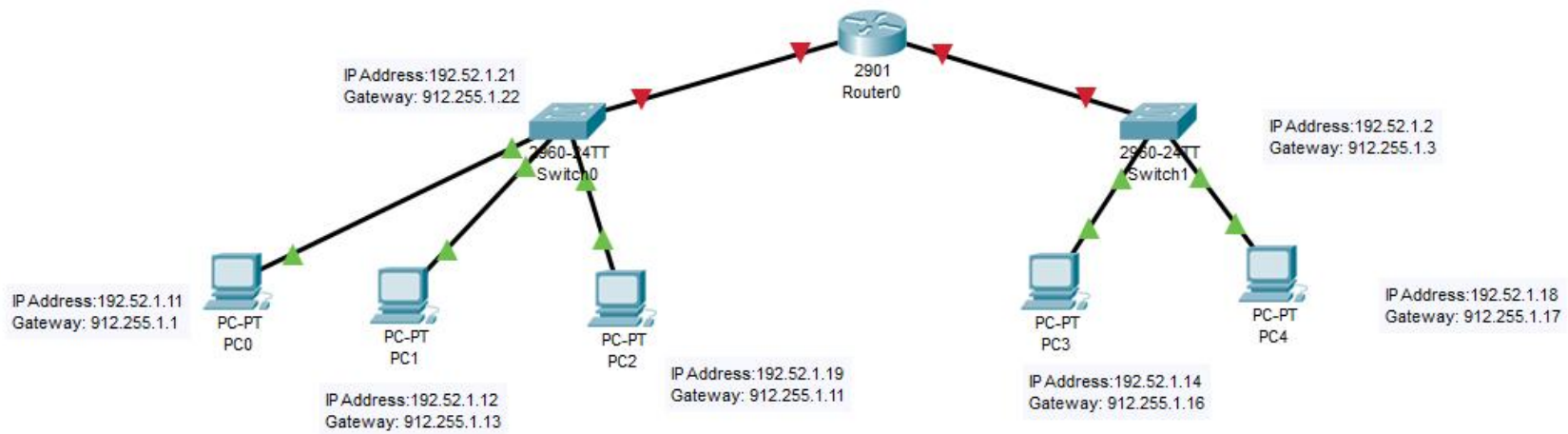


NAME # ZAMIN SHAH
ID # 15277
DEPARTMENT # SE
SECTION # B
PAPER # CCN LAB

- 1, Construct a network topology which have one router
6. Router is connected with 5 computers
7. Also connect two switches with router which is connected with 2 of the computers from one side and 3 computers with other side
8. Assign the computers, switches and routers proper IP addresses, subnet mask and default gateways
9. Configure router using command line interface and ping one PC to other and show the results
10. In the end use “save your configurations” command and show the result.



Simulation Panel



Event List

Vis.	Time(sec)	Last Device	At Device	Type
	0.558	—	Switch0	STP
	0.559	Switch0	PC0	STP
	0.559	Switch0	PC1	STP
	0.559	Switch0	PC2	STP
	0.562	—	Switch1	STP
	0.563	Switch1	PC4	STP
	0.563	Switch1	PC3	STP
	2.560	—	Switch0	STP

Reset Simulation



Constant Delay

 Captured to:
2.560 s

Play Controls



Event List Filters - Visible Events

ACL Filter, ARP, BGP, Bluetooth, CAPWAP, CDP, DHCP, DHCPv6, DNS, DTP, EAPOL, EIGRP, EIGRPv6, FTP, H.323, HSRP, HSRPv6, HTTP, HTTPS, ICMP, ICMPv6, IPsec, ISAKMP, IoT, IoT TCP, LACP, LLDP, NDP, NETFLOW, NTP, OSPF, OSPFv6, PAgP, POP3, PPP, PPPoE, PTP, RADIUS, REP, RIP, RIPng, RTP, SCCP, SMTP, SNMP, SSH, STP, SYSLOG, TACACS, TCP, TFTP, Telnet, UDP, USB, VTP

Edit Filters

Show All/None

Event List

Realtime

Simulation

2. Give hostname to the router with your name like "Muhammad ALI"

--- System Configuration Dialog ---

Would you like to enter the initial configuration dialog? [yes/no]: n

Press RETURN to get started!

```
Router>enable
```

```
Router#con
```

```
% Ambiguous command: "con"
```

```
Router#conf
```

```
Configuring from terminal, memory, or network [terminal]?
```

```
Enter configuration commands, one per line. End with CNTL/Z.
```

```
Router(config)#hostname zaminshah
```

```
zaminshah(config)#line console 0
```

```
zaminshah(config-line)#exit
```

```
zaminshah(config)#
```

Ctrl+F6 to exit CLI focus

Copy

Paste

Top

3. Apply login password as your roll number e.g. "12345" on the router



IOS Command Line Interface

```
Would you like to enter the initial configuration dialog? [yes/no]: n  
  
Press RETURN to get started!  
  
Router>enable  
Router#con  
% Ambiguous command: "con"  
Router#conf  
Configuring from terminal, memory, or network [terminal]?  
Enter configuration commands, one per line. End with CNTL/Z.  
Router(config)#line console 0  
Router(config-line)#password 15277  
Router(config-line)#login  
Router(config-line)#exit  
Router(config)#line vty 0 4  
Router(config-line)#password 15277  
Router(config-line)#login  
Router(config-line)#exit  
Router(config)#exit  
Router#  
%SYS-5-CONFIG_I: Configured from console by console
```

Ctrl+F6 to exit CLI focus

Copy

Paste

4. 4. Enable secret password to it


```
zaminshah(config-line)#login
zaminshah(config-line)#enable secret class
zaminshah(config)#banner
% Incomplete command.
zaminshah(config)#banner motd $ no ACCESS $
zaminshah(config)#EXIT
zaminshah#
%SYS-5-CONFIG_I: Configured from console by console

zaminshah#show running conf
      ^
% Invalid input detected at '^' marker.

zaminshah#show ru
Building configuration...

Current configuration : 730 bytes
!
version 15.1
no service timestamps log datetime msec
no service timestamps debug datetime msec
no service password-encryption
!
hostname zaminshah
!
!
!
enable secret 5 $1$mERr$9cTjUIEqNGurQiFU.ZeCil
!
!
!
!
!
!
no ip cef
no ipv6 cef
--More-- |
```

Ctrl+F6 to exit CLI focus

5. Show banner of "NO ACCESS" before login on the router and show the results.

```
zaminshah(config-line)#login
zaminshah(config-line)#enable secret class
zaminshah(config)#banner
% Incomplete command.
zaminshah(config)#banner motd $ no ACCESS $
zaminshah(config)#EXIT
zaminshah#
%SYS-5-CONFIG_I: Configured from console by console
```