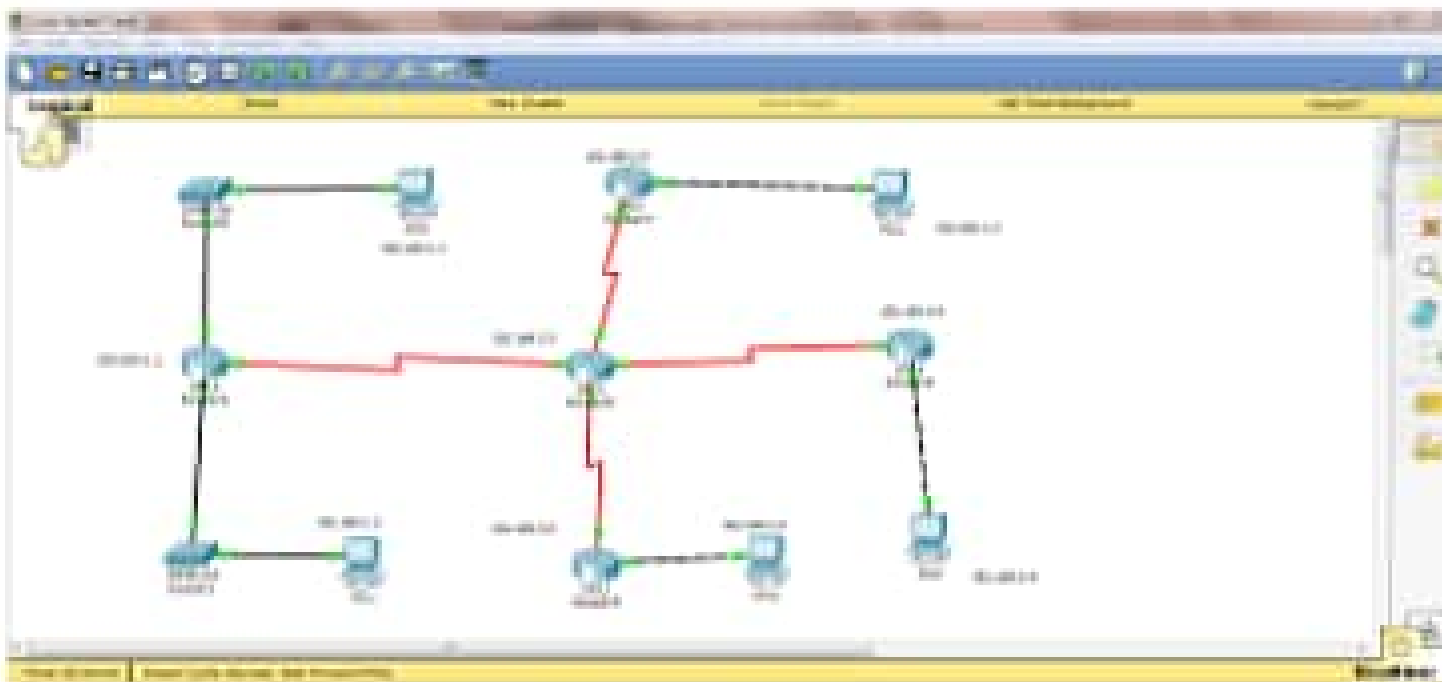


FINAL ASSIGNMENT OF LAB

Name	Asad Khan
id no	14944
subject	Network & Communication
depart	BS(CS) 4 th
date	29/06/2020

Task Number 1

- 1. first we need cisco software**
- 2. open it and add 5 router 2811**
- 3. then add two switch 2950-24**
- 4. then add 5 computer**



5 . here we can see router switch and pcs are connected but before the connection first we should add WIT_IT into routers

Physical Config GUI

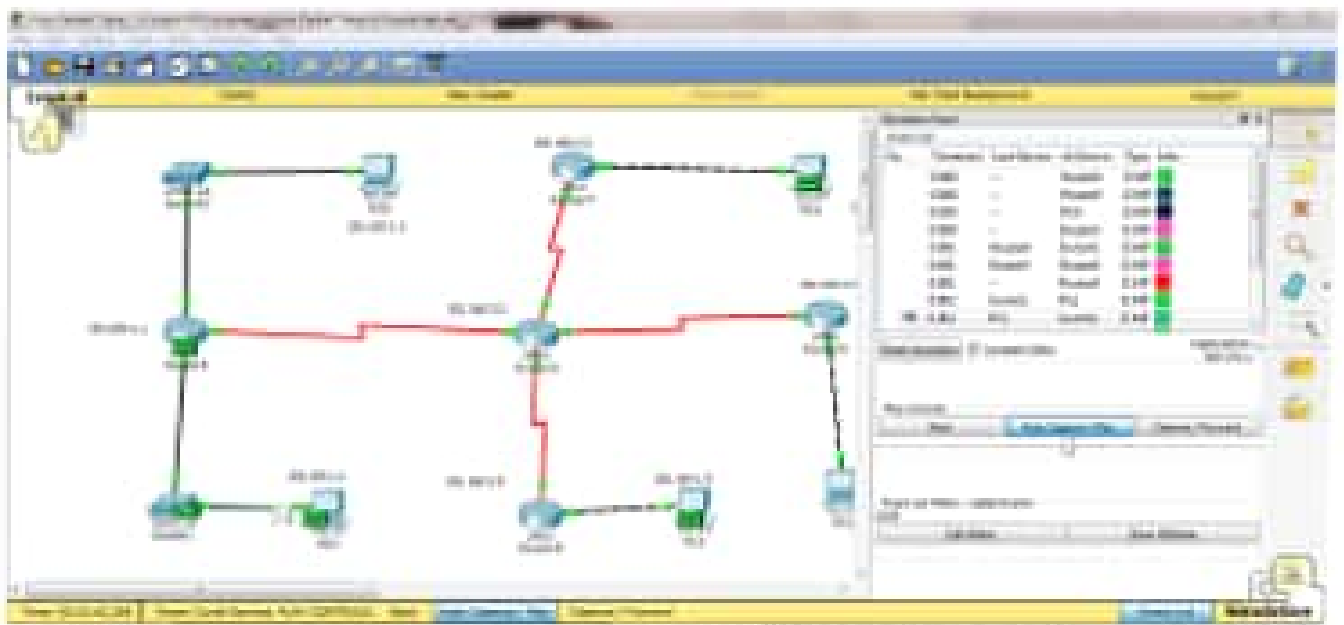
Physical Device View

Zoom In Original View Zoom Out

- NH-1FE2W
- NH-2E2W
- NH-2FE2W
- NH-2W
- NH-4A/S
- NH-4E
- NH-8A/S
- NH-8A/S
- NH-Cover
- NH-ESW-160
- HWIC-2T
- HWIC-4ESW
- HWIC-8A
- HWIC-AP AG-B
- WIC-LAN
- WIC-1BRI
- WIC-1T
- WIC-2T
- WIC-2T
- WIC-Cover

The NH-1E features a single Ethernet port that can connect a LAN backbone which can also support either six PRI connections to aggregate ISDN lines, or 24 synchronous/asynchronous ports.

6 . As well already we add one one laptop or pcs after that we connect then using copper wire and serial DTE cable for router



and then we should send the PDU

From one to the another computer

and show the result like that msg is send successful

Realtime									
Fire	Last Status	Source	Destination	Type	Color	Time(sec)	Periodic	Num	
	Successful	Router5	PC1	ICMP		600.669	N	5	
	Successful	PC1	Router5	ICMP		600.669	N	6	
	Successful	PC1	Router5	ICMP		600.431	N	7	

Task NO .2 IP ROUTING

1 . in the second task we should configure the all router and show the result 2 open cisco

3 click on router which you wanna configure

4 as well as when we click then we will see a window click on the CLI cammand line interface

```

IOS Command Line Interface

Router>
Router>config t
Enter configuration commands, one per line. End with CTRL/Z.
Router(config)#interface fastethernet0/0
% Invalid input detected at '^' marker.

Router(config)#interface fastethernet0/1
Router(config-if)#ip address 192.168.2.1
% Incomplete command.
Router(config-if)#ip address 192.168.2.1 255.255.255.0
% 192.168.2.0 overlaps with Serial0/0/0
Router(config-if)#no shutdown
Router(config-if)#
Router(config-if)#exit
Router(config)#
Router>
Router>
4510-S-COMM2_1: Configured from console by console

Router>
Router>config t
Enter configuration commands, one per line. End with CTRL/Z.
Router(config)#interface fastethernet0/0
% Incomplete command
Router(config)#interface fastethernet0/1
Router(config-if)#ip address 192.168.2.1 255.255.255.0
Router(config-if)#no shutdown
Router(config-if)#

```

like that and configure the router

using some commands

like that and configure the router
using some commands

first ***en or enable***

then ***config t or configure terminal***

then interface fastethernet0/0 etc

and ip address 192.169.1.1

this window id for another router as well for all
router like that

after the routing using the some commands like

#enable

#config t

#router rip

#network 192.169.2.2

#end

```
Router#
Router#conf t
Enter configuration commands, one per line. End with CTRL/C.
Router(config)#router rip
Router(config-router)#network
% Incomplete command.
Router(config-router)#exit
Router(config)#interface FastEthernet0/0
Router(config-if)#
Router(config-if)#ip address
Router(config-if)#interface FastEthernet0/1
Router(config-if)#
Router(config-if)#ip
Router(config-if)#interface Serial0/0/0
Router(config-if)#ip
Router(config)#
Router#
R123-1-CONFIG_1: Configured from console by console

Router#
Router#conf t
Enter configuration commands, one per line. End with CTRL/C.
Router(config)#router rip
Router(config-router)#network 192.168.1.1
Router(config-router)#end
Router#
R123-1-CONFIG_1: Configured from console by console
```

see the above window as well as we will do all like that

```
R123-1-CONFIG_1: Configured from console by console

Router#
Router# conf t
Enter configuration commands, one per line. End with CTRL/C.
Router(config)#router rip
Router(config-router)#network 192.168.1.1
Router(config-router)#end
Router#
R123-1-CONFIG_1: Configured from console by console
```

this above is for another router rip and in this point our lab tasks are completed