

Name: Kaleem Ullah Khan

ID: 7681

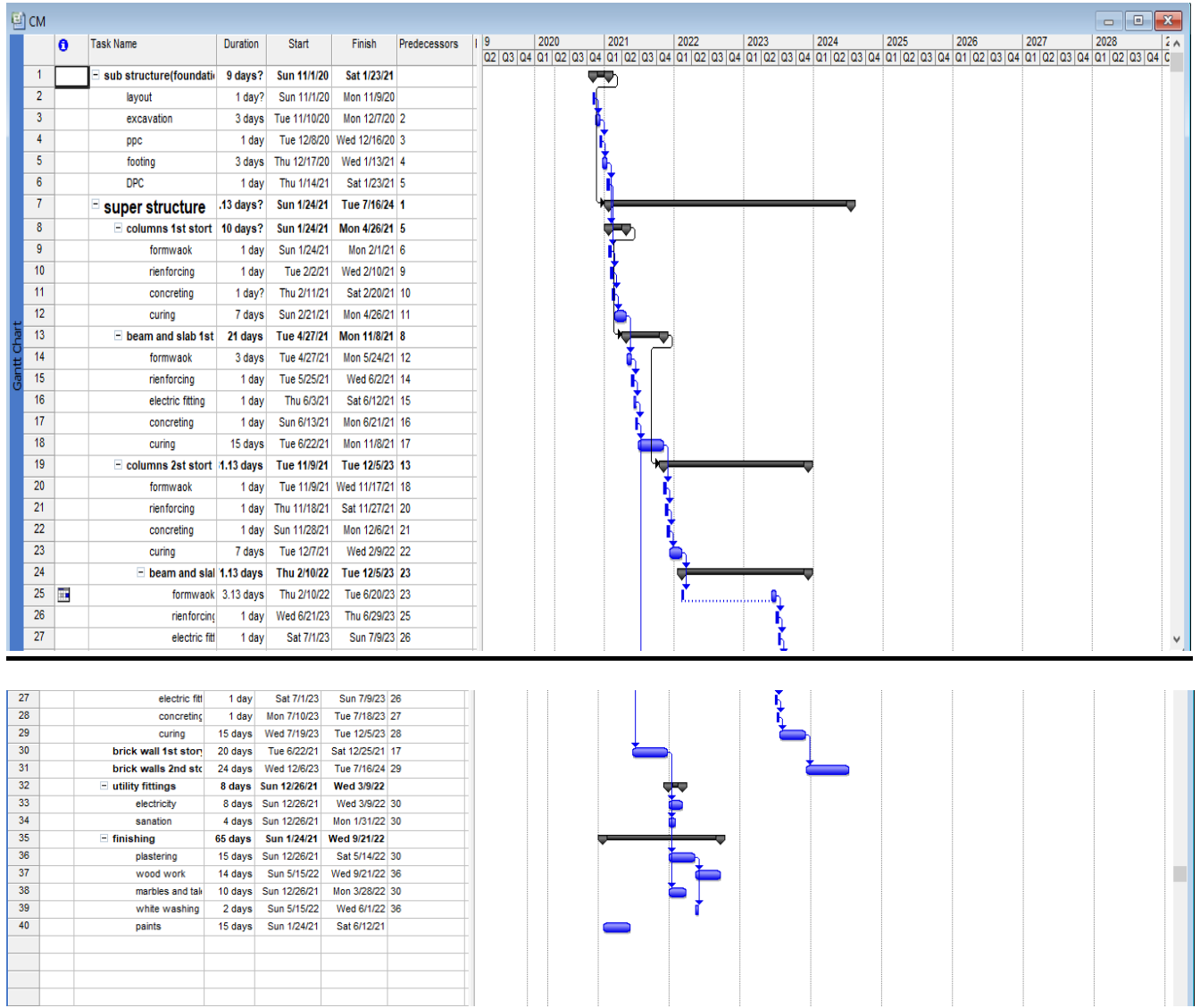
SEC "C" 8<sup>th</sup> semester

## ACTIVITY LIST:

Following are the activities performed in the construction of house

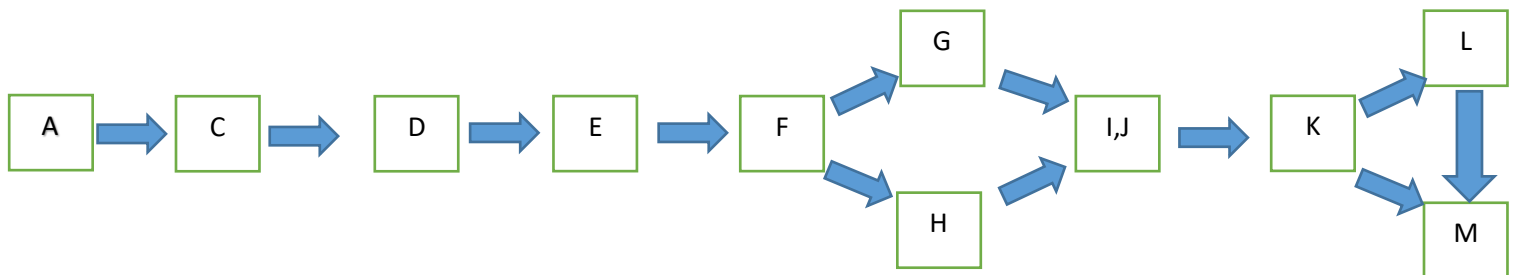
- ✓ Planning
- ✓ Survey
- ✓ Mobilization
- ✓ Layout
- ✓ Excavation
- ✓ Foundation
- ✓ Columns
- ✓ Slabs
- ✓ Brick walls work
- ✓ Sanitary fitting
- ✓ Flooring
- ✓ Finishing
- ✓ Wood work
- ✓ Electrification
- ✓ Miscellaneous

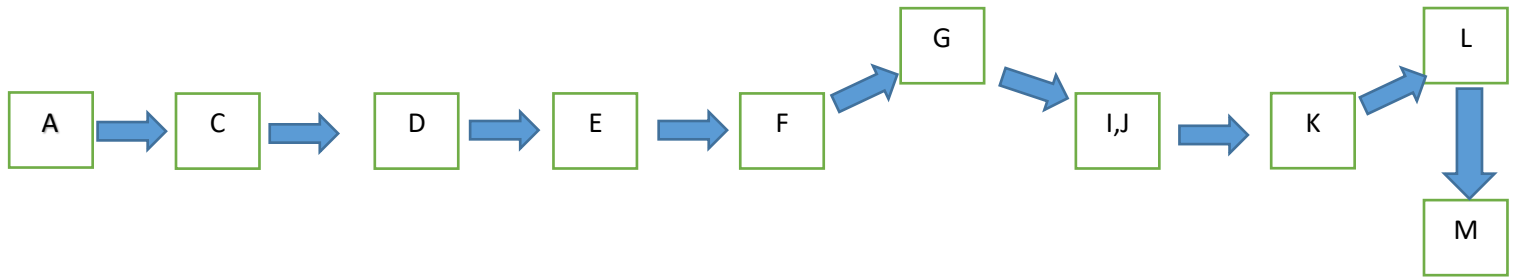
# BREAKDOWN AND TIMELINE OF ACTIVITIES



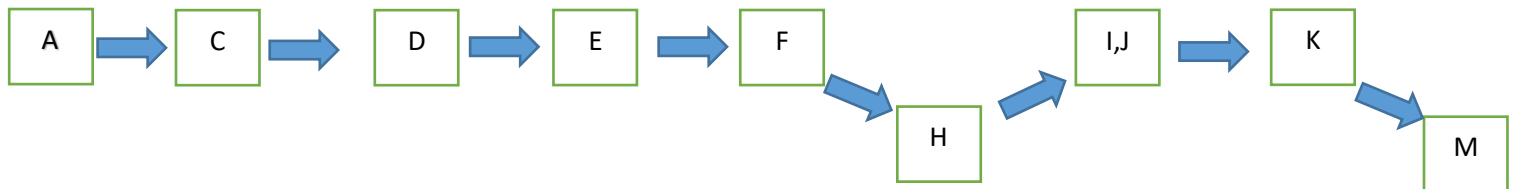
# CRITICAL PATH METHOD:

ACTIVITIES		PREDECESSORS	DURATION IN DAYS
SURVEY	A		7
MOBILAZITION	B		7
GRUBBING OF SITE	C	A	1
LAYOUT AND EXCAVATION	D	C	4
FORMWORK	E	D	11
FOUNDATION AND COLUMN	F	E	9
CONCRETING OF BEAMS AND SLAB	G	F	42
BRICKWORK	H	F	44
PLUMBING AND SANITARY WORK	I	G,H	4
ELECTRIFICTION	J	G,H	8
FINISHING	K	I,J	32
FLOORING	L	K	10
WOODWORK	M	K,L	14
MISCELLANEOUS	N		10
			TOTAL DAYS= 203
			TOTAL MONTHS= 6.76



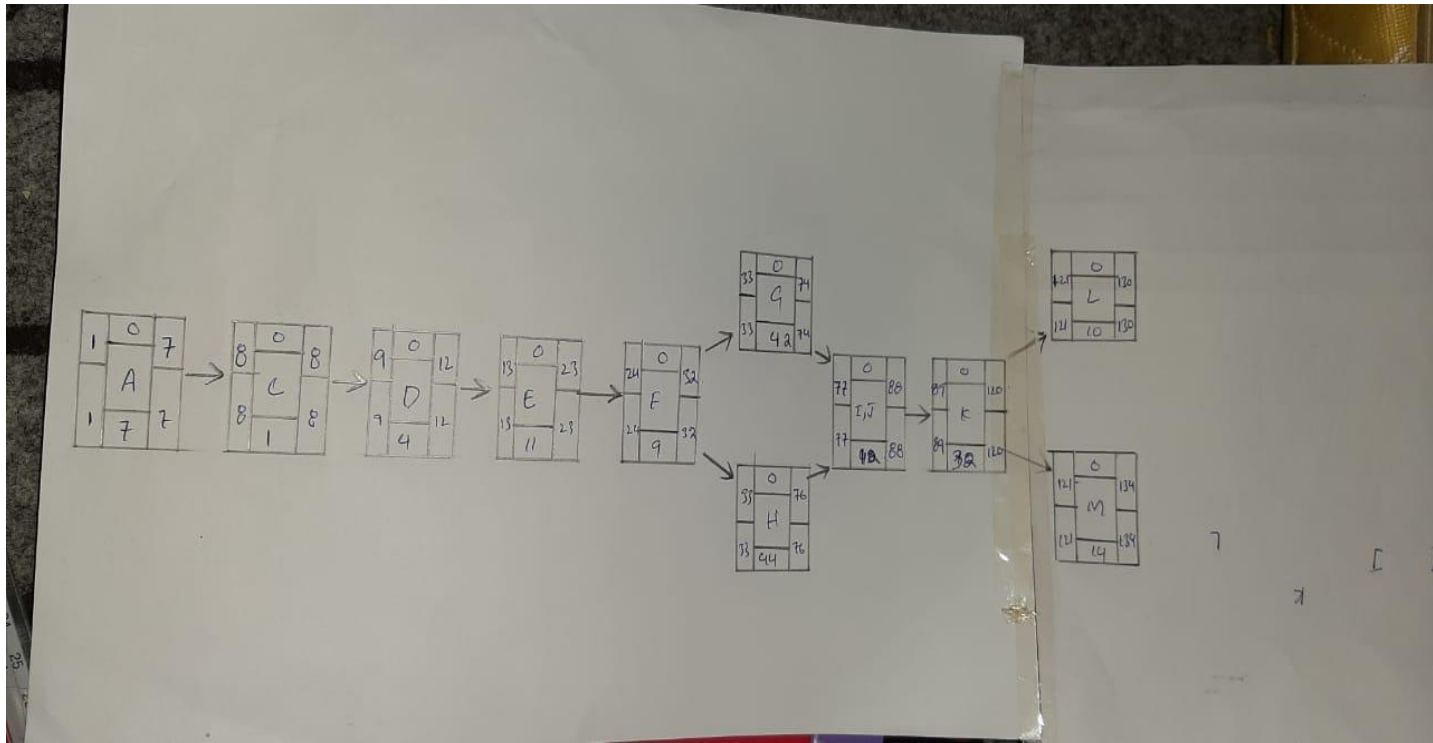


**PATH 1:** A, C, D, E, F, G, IJ, K, L, M  
 $=7+1+4+11+9+42+4+8+32+10+14=142\text{DAYS}=4.733\text{MONTHS}$ .



**PATH 2:** A, C, D, E, F, H, IJ, K, M  
 $=7+1+4+11+9+44+4+8+32+14=134\text{DAYS}=4.466$

SO the critical path of the project is path "1" which is equal to 4.733 months.



## SLACK FOR THE PROJECT:

Slack = late finish – early finish

$$A = 7 - 7 = 0$$

$$C = 8 - 8 = 0$$

$$D = 12 - 12 = 0$$

$E = 13 - 13 = 0$  and so on all values comes zero so no slack

Slack = late start – early start

$$A = 1 - 1 = 0$$

$$C = 8 - 8 = 0$$

$$D = 9 - 9 = 0$$

$E = 13 - 13 = 0$  and so on all values comes zero so no slack