

NAME :- SADEEQ AFRIDI

ID => 7913

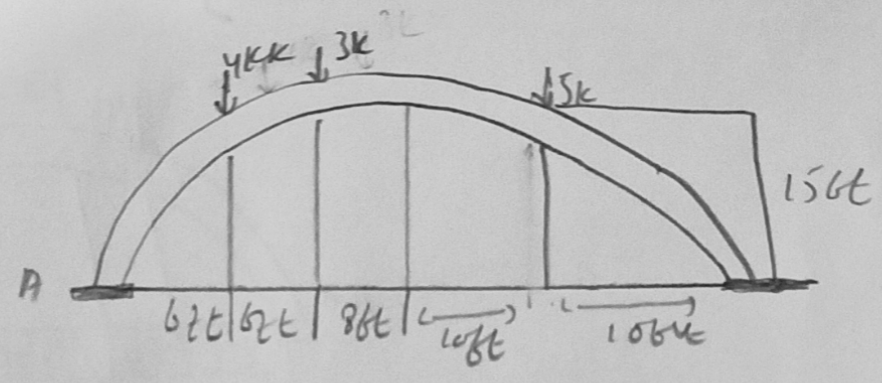
Section => A

Date :- 12/07/2020

Dept :- B.S Civil Engineering

Assignment # 04

Q1#2



Entire Arch:-

$$\sum \Sigma MA = 0;$$

$$-4(6) - 3(12) - 5(30) + C_y(40) = 0$$

$$C_y = 5.5k$$

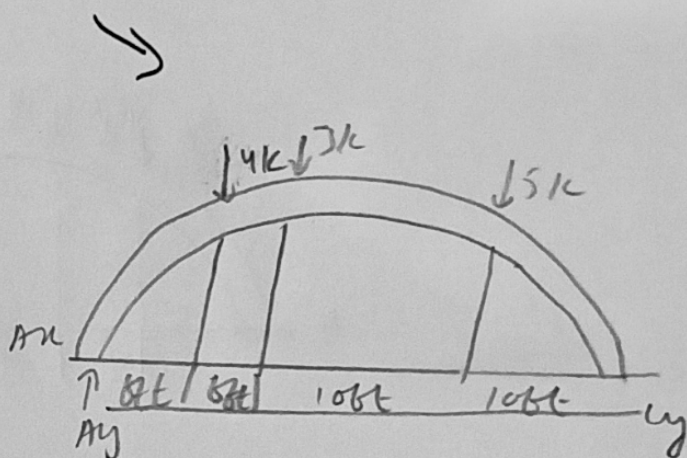
$$p: \quad \epsilon = 0$$

(2)

$$+\uparrow \sum F_y = 0;$$

$$A_y + 5 \cdot 25 - 4 - 3 - 5 = 0$$

$$A_y = 6.75 \text{ k}$$



$$\rightarrow \sum F_x = 0; A_x = 0$$

Section BC

$$\hookrightarrow + \sum M_B = 0;$$

$$-5(10) - T(15) + 5 \cdot 25(20) = 0$$

$$T = 3.67 \text{ k}$$

