



IQRA NATIONAL UNIVERSITY

Name : Sauood Ur Rehman

Department : BS(CS)

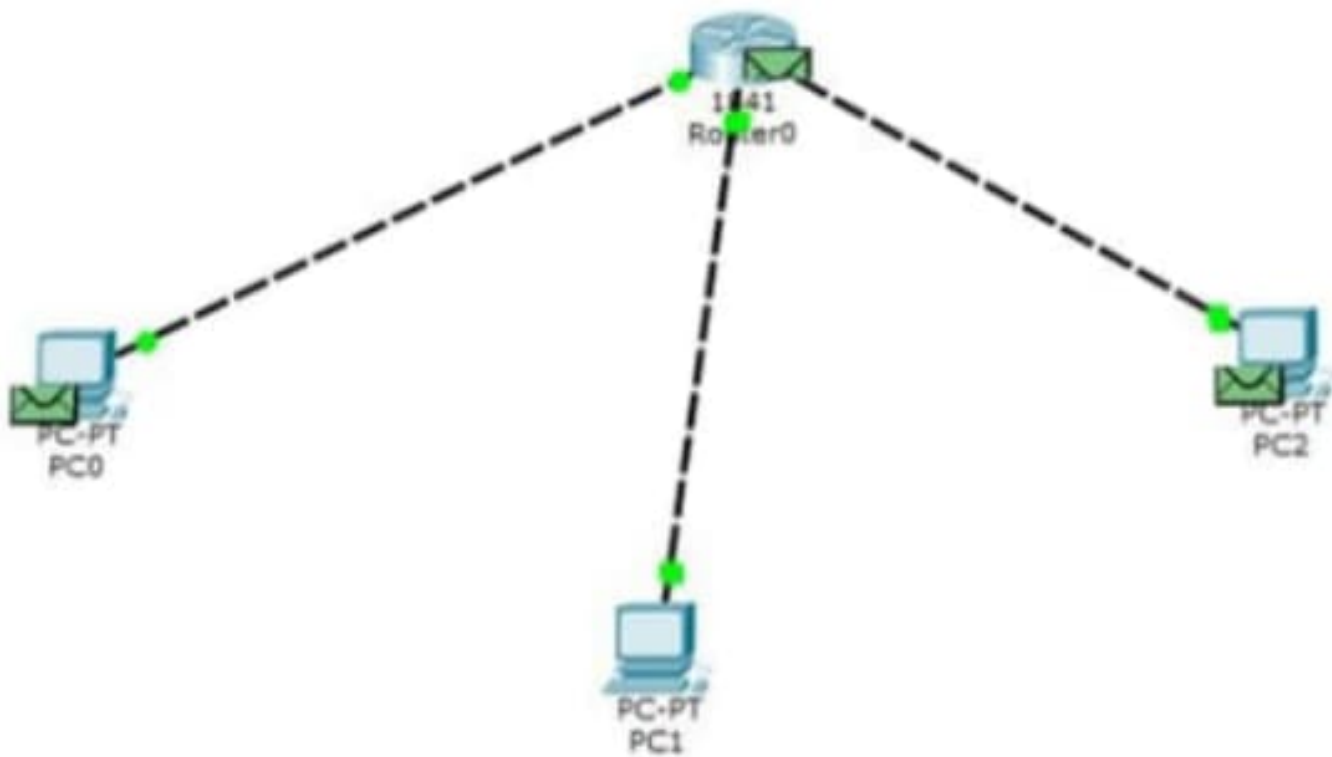
Semester : 4th

ID # : 15031

task n0 1

first open the cisco then add a router and connect 3 pcs
then configure the router using cammand line
and give the ip address sub mask and deaefault gateway
to them





IP Configuration

IP Configuration

DHCP

Static

IP Address 192.168.1.3

Subnet Mask 255.255.255.0

Default Gateway 192.168.1.1

DNS Server

IPv6 Configuration

DHCP

Auto Config

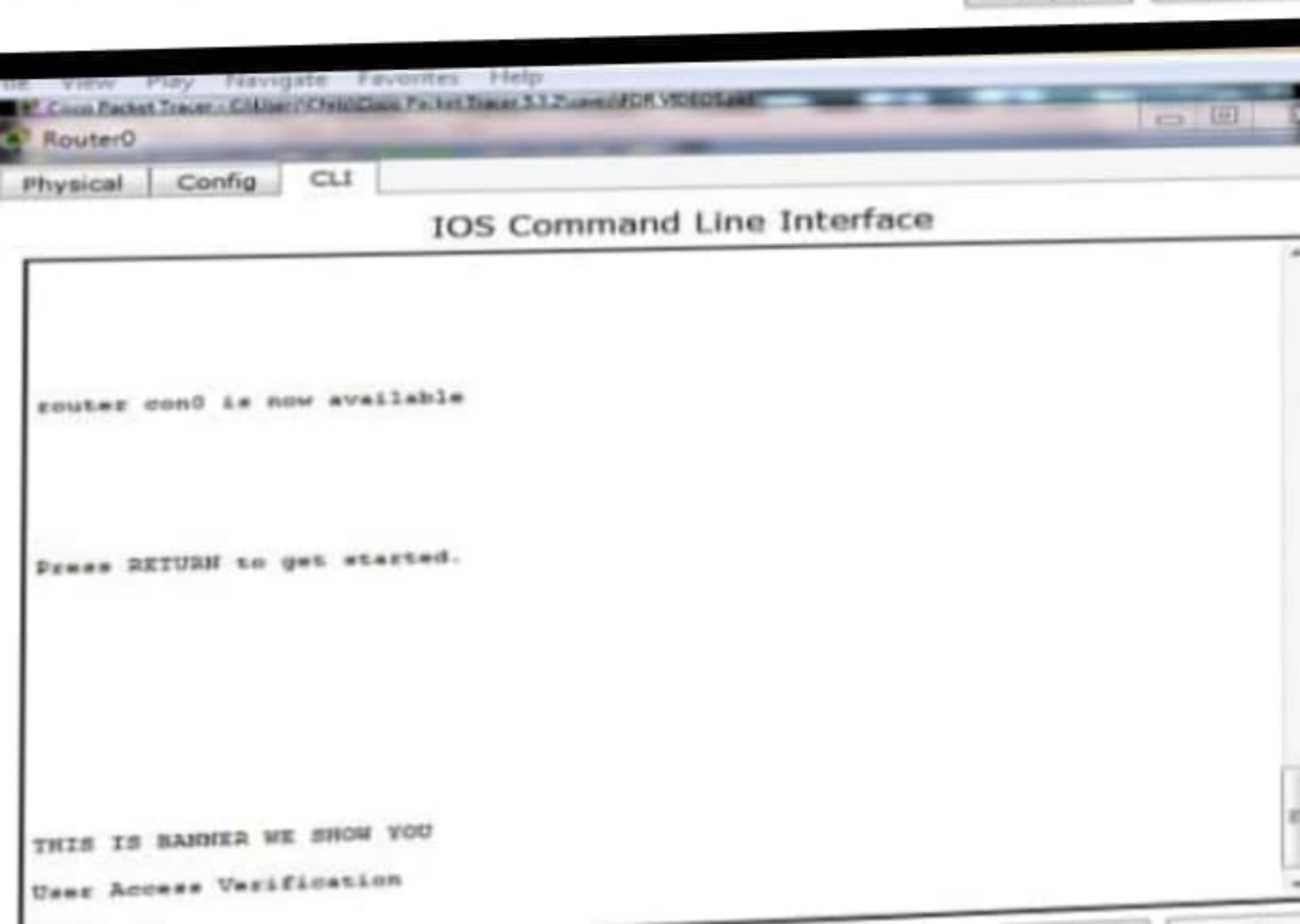
Static

IPv6 Address /

Link Local Address FE80::205:5EFF:FE3A:E549

IPv6 Gateway

IPv6 DNS Server



IOS Command Line Interface

```
Model number: WS-C2950-24
System serial number: FNR061020MC

Cisco Internetwork Operating System Software
IOS (tm) C2950 Software (C2950-I6Q4L3-M), Version 12.1(22)EA4, RELEASE
SOFTWARE(fc1)
Copyright (c) 1986-2006 by Cisco Systems, Inc.
Compiled Wed 18-May-06 22:31 by jharirba

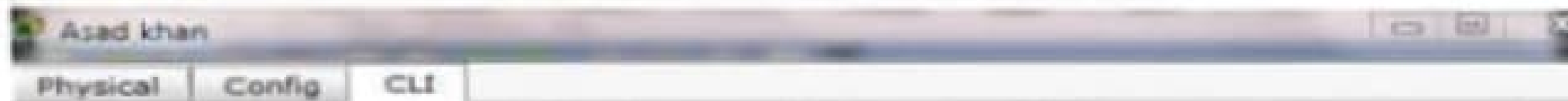
Press RETURN to get started!
```

```
Switch>
Switch>en
Switch#config t
Enter configuration commands, one per line. End with CNTL/Z.
Switch(config)#line console 0
Switch(config-line)#password asadpc
Switch(config-line)#login
Switch(config-line)#exit
Switch(config)#password asadpc
^
^ Invalid input detected at '^' marker.
```

```
Switch(config)#line vty 0 4
Switch(config-line)#password asadpc
Switch(config-line)#login
Switch(config-line)#exit
Switch(config)#
```

Task no 2

in this task we should to show the hostname with my name Asadkhan and also show the password which both we can see below password is asad and host name is Asadkhan



IOS Command Line Interface

```
Asadkhan(config)#
Asadkhan(config)#end
Asadkhan#copy running-config startup-config
Destination filename [startup-config]?
Building configuration...
[OK]
Asadkhan#
%SYS-5-COMFIG_1: Configured from console by console

Asadkhan#
Asadkhan#config t
Enter configuration commands, one per line. End with CTRL/Z.
Asadkhan(config)#hostname Asadkhan
Asadkhan(config)#password asad
-
% Invalid input detected at '--' marker.

Asadkhan(config)#password asad
-
% Invalid input detected at '--' marker.

Asadkhan(config)#line console 0
Asadkhan(config-line)#password asad
Asadkhan(config-line)#login
Asadkhan(config-line)#exit
Asadkhan(config)#line vty 0 4
Asadkhan(config-line)#password asad
Asadkhan(config-line)#login
Asadkhan(config-line)#exit
```

IP Configuration

IP Configuration

 DHCP Static

IP Address 196.168.1.3

Subnet Mask 255.255.255.0

Default Gateway 196.168.1.2

DNS Server

IPv6 Configuration

 DHCP Auto Config Static

IPv6 Address /

Link Local Address FE80::20C:CFFF:FEB1:90AB

IPv6 Gateway

IPv6 DNS Server

IOS Command Line Interface

--- System Configuration Dialog ---

Continue with configuration dialog? [yes/no]: n

Press RETURN to get started!

```

router>en
router#config t
Enter configuration commands, one per line. End with CNTL/Z.
router(config)#hostname router
router(config)#line console 0 4
~
Invalid input detected at '^' marker.
router(config)#line console 0 4
~
Invalid input detected at '^' marker.
router(config)#line console 0
router(config-line)#password cisco
router(config-line)#login
router(config-line)#exit
router(config)#line vty 0 4
router(config-line)#password cisco
router(config-line)#login
router(config-line)#exit

```

Microsoft Windows [Version 6.0.6002.18000] Copyright (c) 2009 Microsoft Corporation. All rights reserved.
C:\> ipconfig /all
C:\> ping 192.168.1.1

Pinging 192.168.1.1 with 32 bytes of data:

Reply from 192.168.1.1: bytes=32 time=21ms TTL=255
Reply from 192.168.1.1: bytes=32 time=0ms TTL=255
Reply from 192.168.1.1: bytes=32 time=0ms TTL=255
Reply from 192.168.1.1: bytes=32 time=0ms TTL=255

Ping statistics for 192.168.1.1:

Packets: Sent = 4, Received = 4, Lost = 0 (0% loss),
Approximate round trip times in milli-seconds:
Minimum = 0ms, Maximum = 21ms, Average = 5ms

C:\>

IP Configuration

IP Configuration

DHCP Static

IP Address 196.168.1.2

Subnet Mask 255.255.255.0

Default Gateway 196.168.1.1

DNS Server

IPv6 Configuration

DHCP Auto Config Static

IPv6 Address /

Link Local Address FE80::205:5EFF:FEA3:EA6B

IPv6 Gateway

IPv6 DNS Server

IP Configuration

IP Configuration

DHCP Static

IP Address 196.168.1.3

Subnet Mask 255.255.255.0

Default Gateway 196.168.1.1

DNS Server

IPv6 Configuration

DHCP Auto Config Static

IPv6 Address /

Link Local Address FE80::290:28FF:FE7B:9D5B

IPv6 Gateway

IPv6 DNS Server