

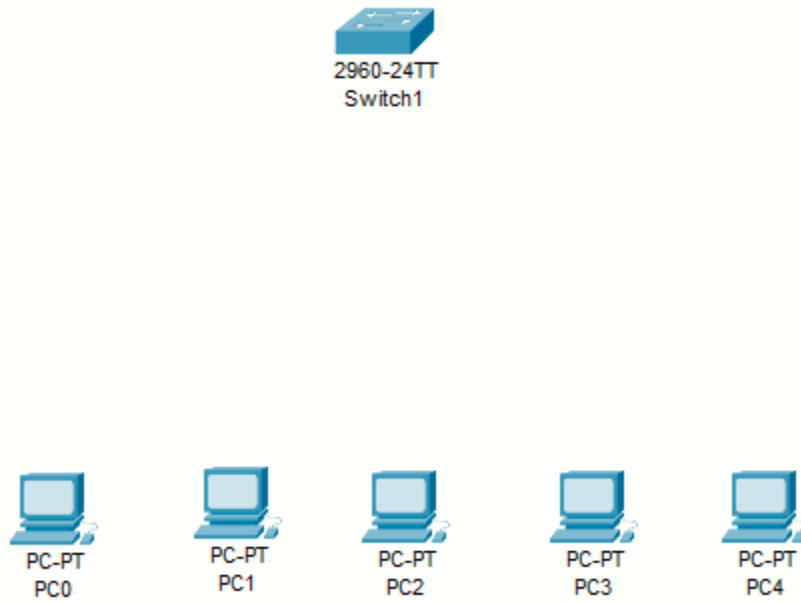
Name : Haider Ali

ID: 6916

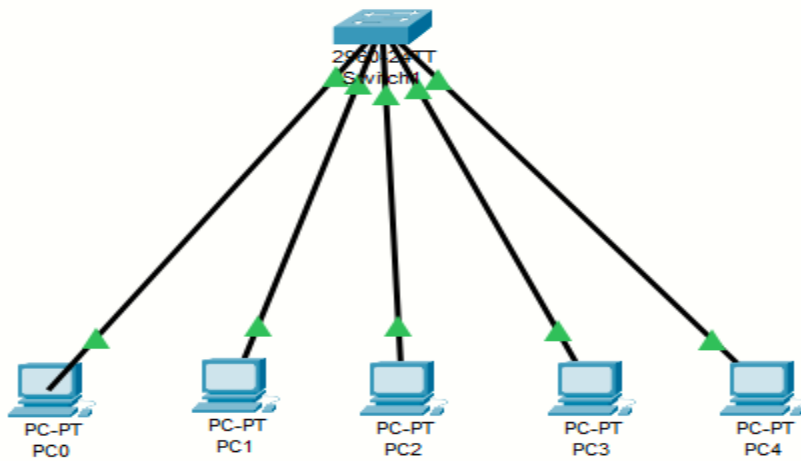
SUBJECT: CCN LAB

### LAB TASK 1:

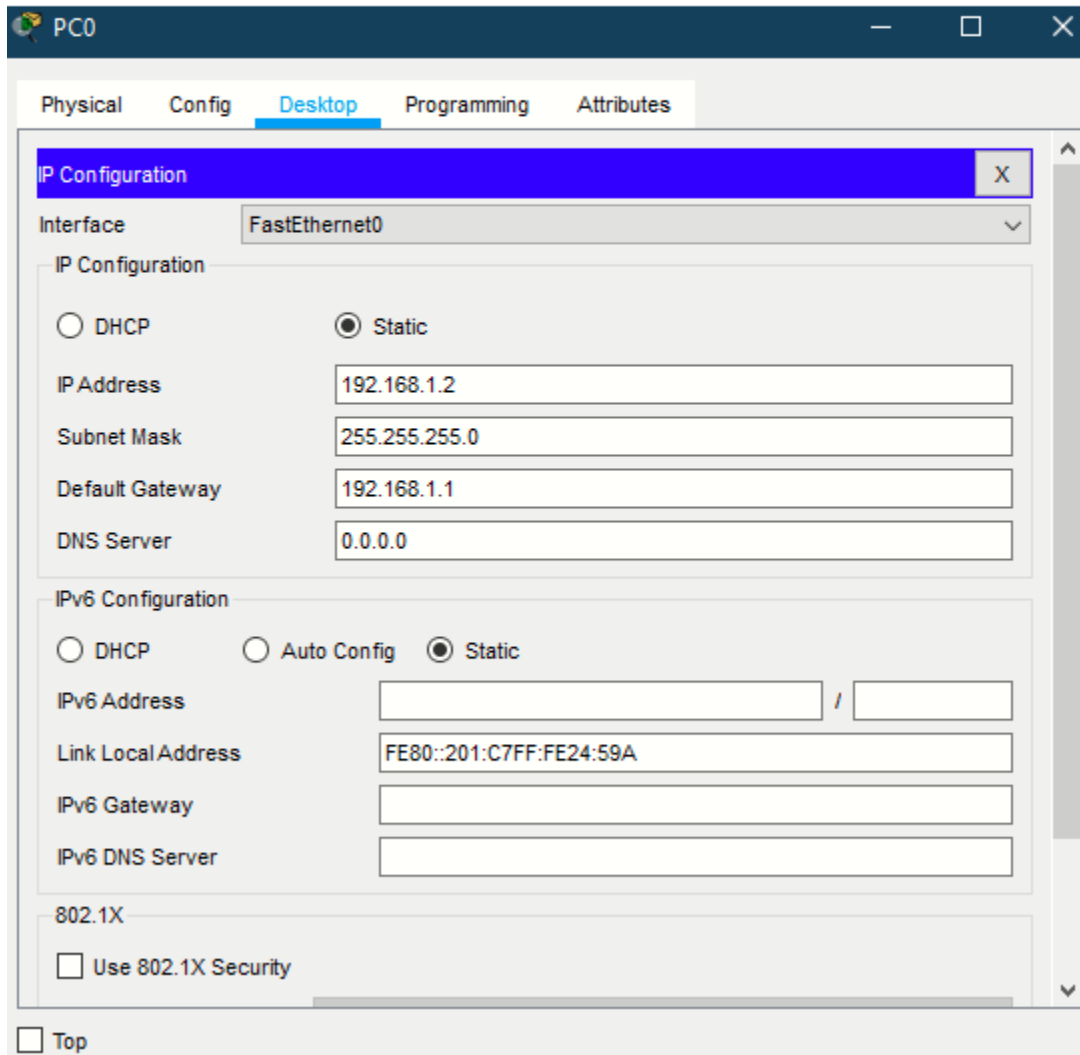
- i. Open Cisco Packet Tracer and select five PC,s and a switch.



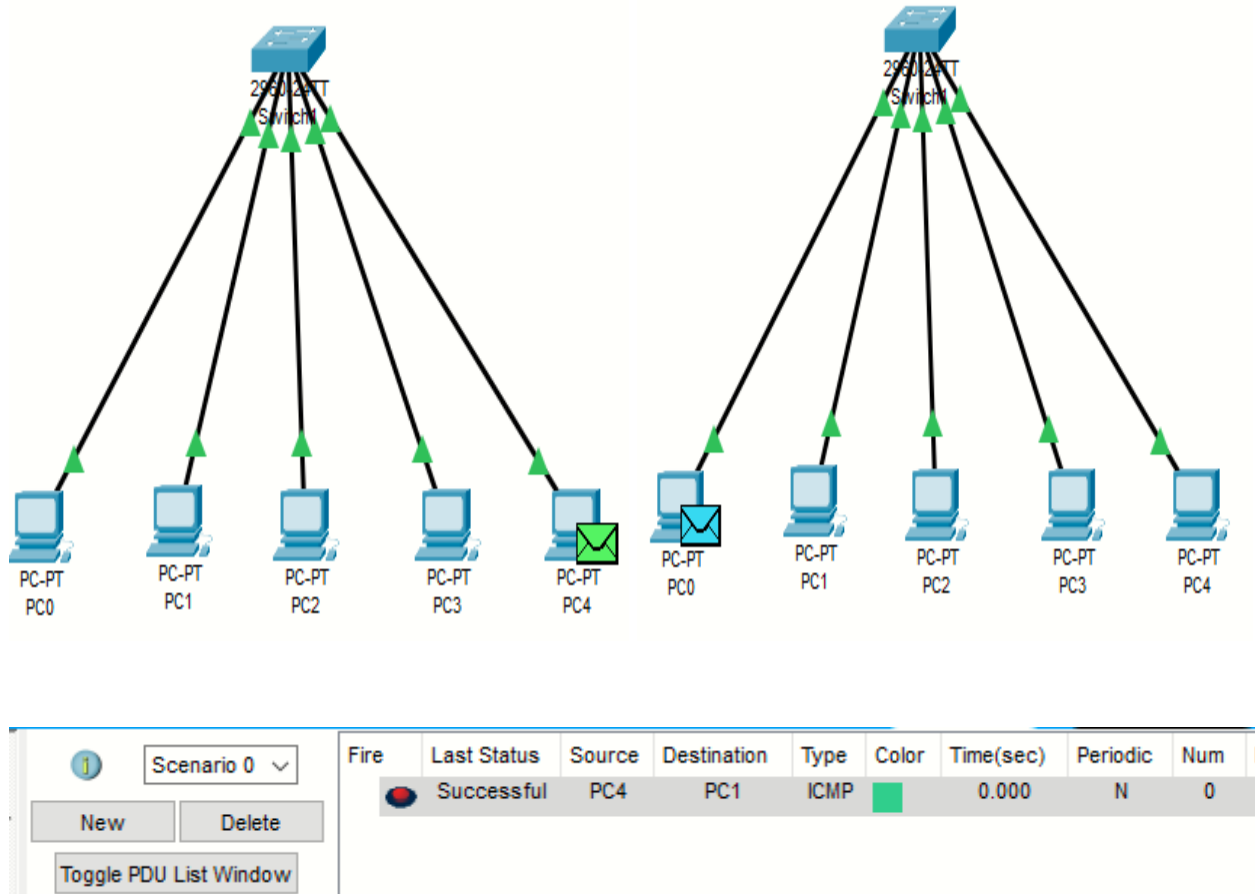
- ii. Connect the seleted PC,s and switch with fast ethernet cable.



iii. Assign these PC,s proper IP addresses , subnet mask and default gateway

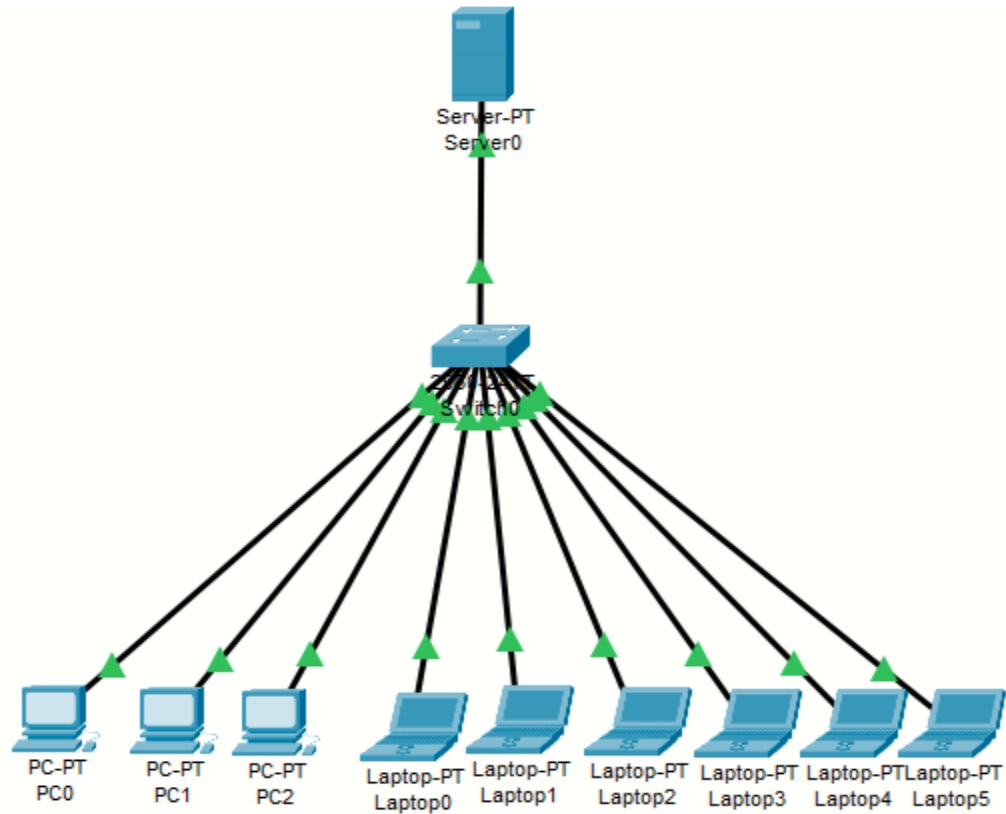


iv. Message sent from PC 5 to PC

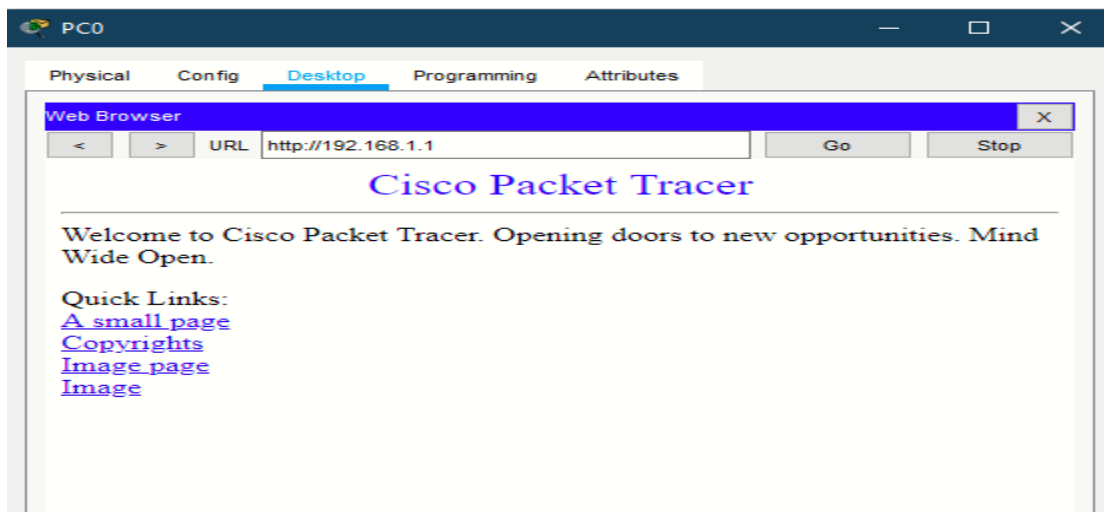


## LAB TASK 2:

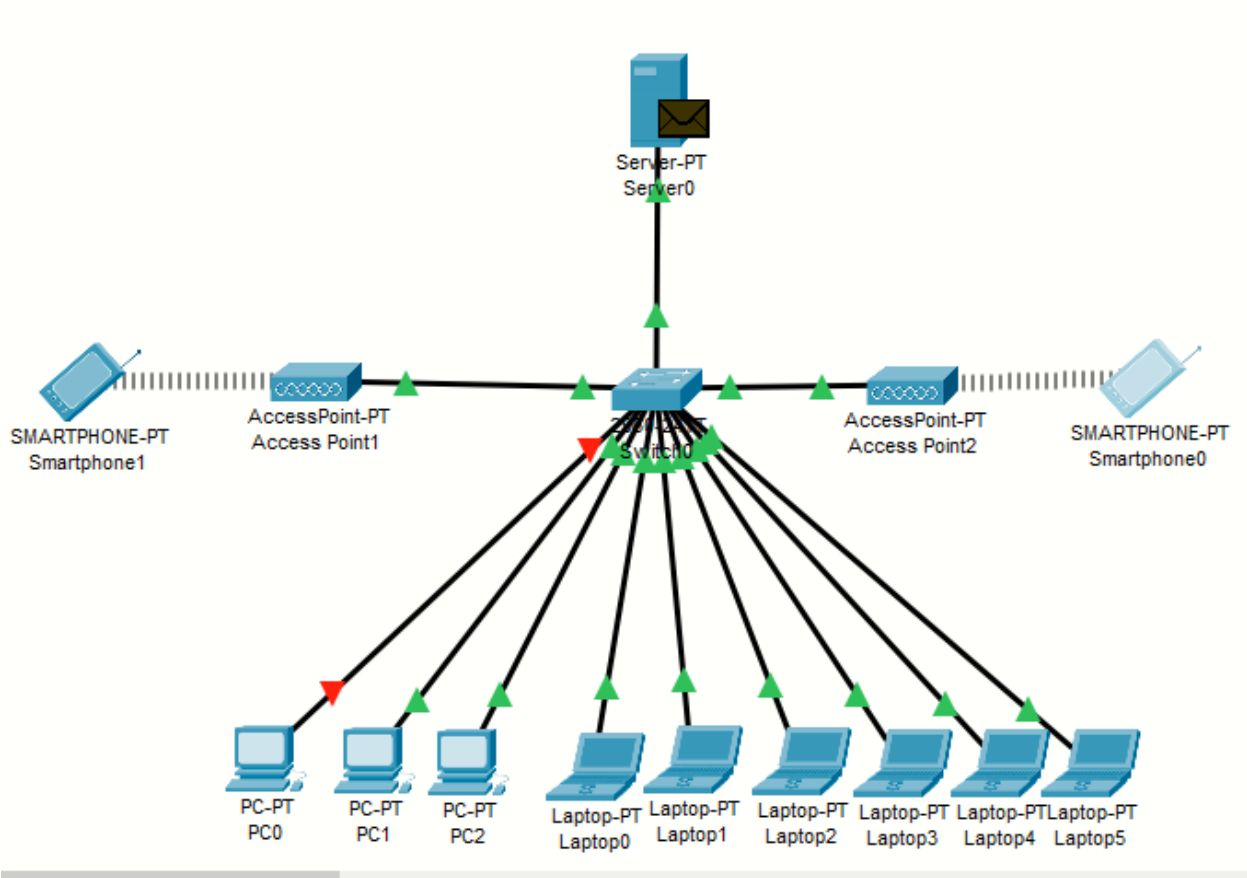
- i. Make a HTTP server that have 9 hosts three of them are computers and 6 are laptops.



- ii. Access the HTTP server from the client and show the results.



iii. Connected 2 access points through wireless channel.



iv. Access point 1 hosts three clients and access point 2 deal 9 clients

