

NAME : UMAIR KHAN

I.D : 14596

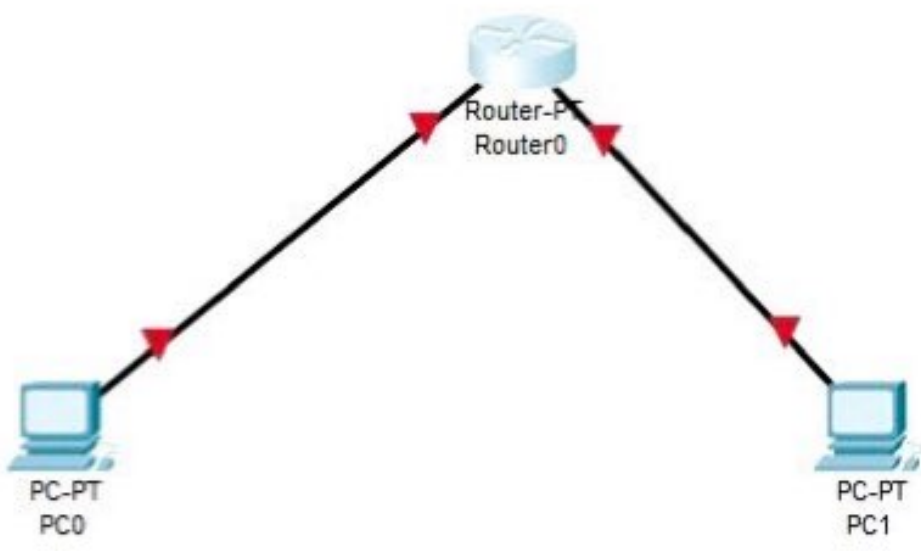
SECTION : A

SEMESTER : 4th BS(SE)

SUBJECT : COMPUTER COMMUNICATION

- AND NETWORKS (LAB)

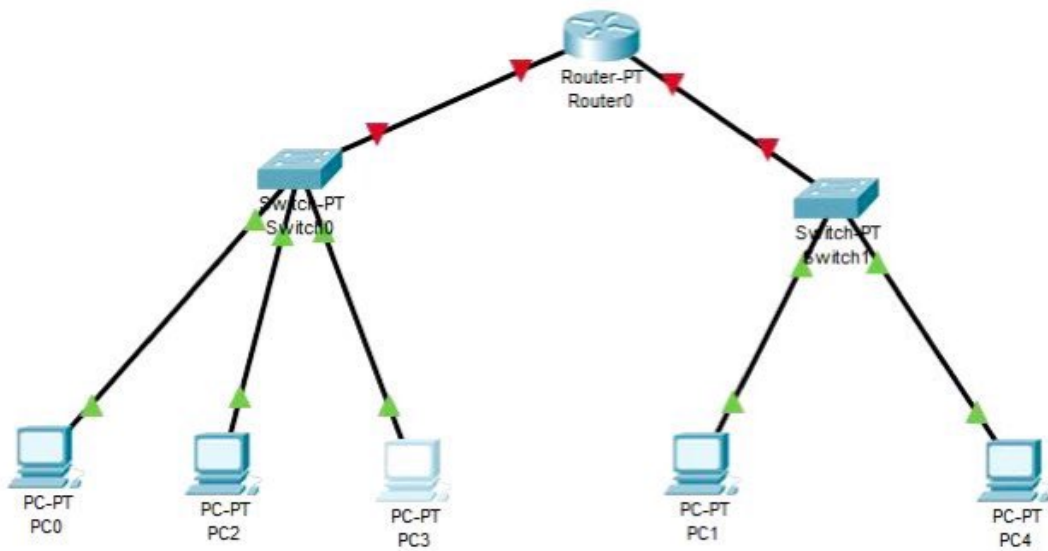
INSTRUCTOR : Mansoor Qadir



Copper Straight-Through



Physical x: 369, y: 164





Router0

Physical Config CLI Attributes

IOS Command Line Interface

```
PT2005 processor: part number 0, mask 01
Bridging software.
X.25 software, Version 3.0.0.
4 FastEthernet/IEEE 802.3 interface(s)
2 Low-speed serial(sync/async) network interface(s)
32K bytes of non-volatile configuration memory.
63488K bytes of ATA CompactFlash (Read/Write)

--- System Configuration Dialog ---

Would you like to enter the initial configuration dialog? [yes/no]:
no

Press RETURN to get started!

Router>enable
Router#configure console
^
% Invalid input detected at '^' marker.

Router#hostname umairkhan
```

Ctrl+F6 to exit CLI focus

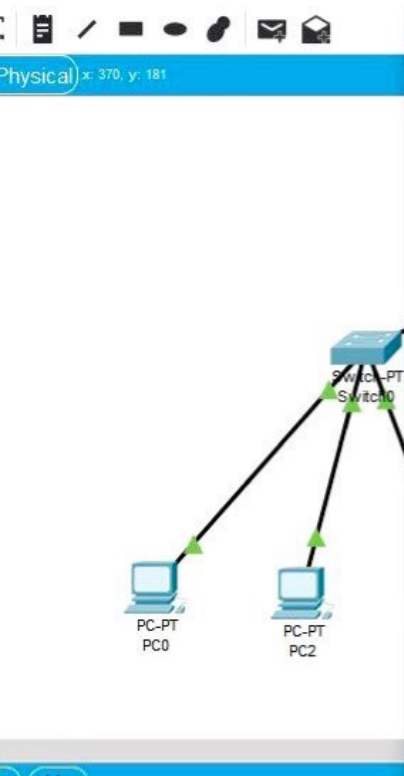
Copy Paste

Top

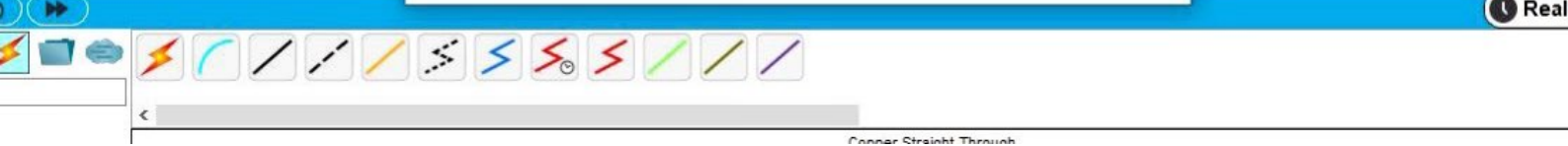


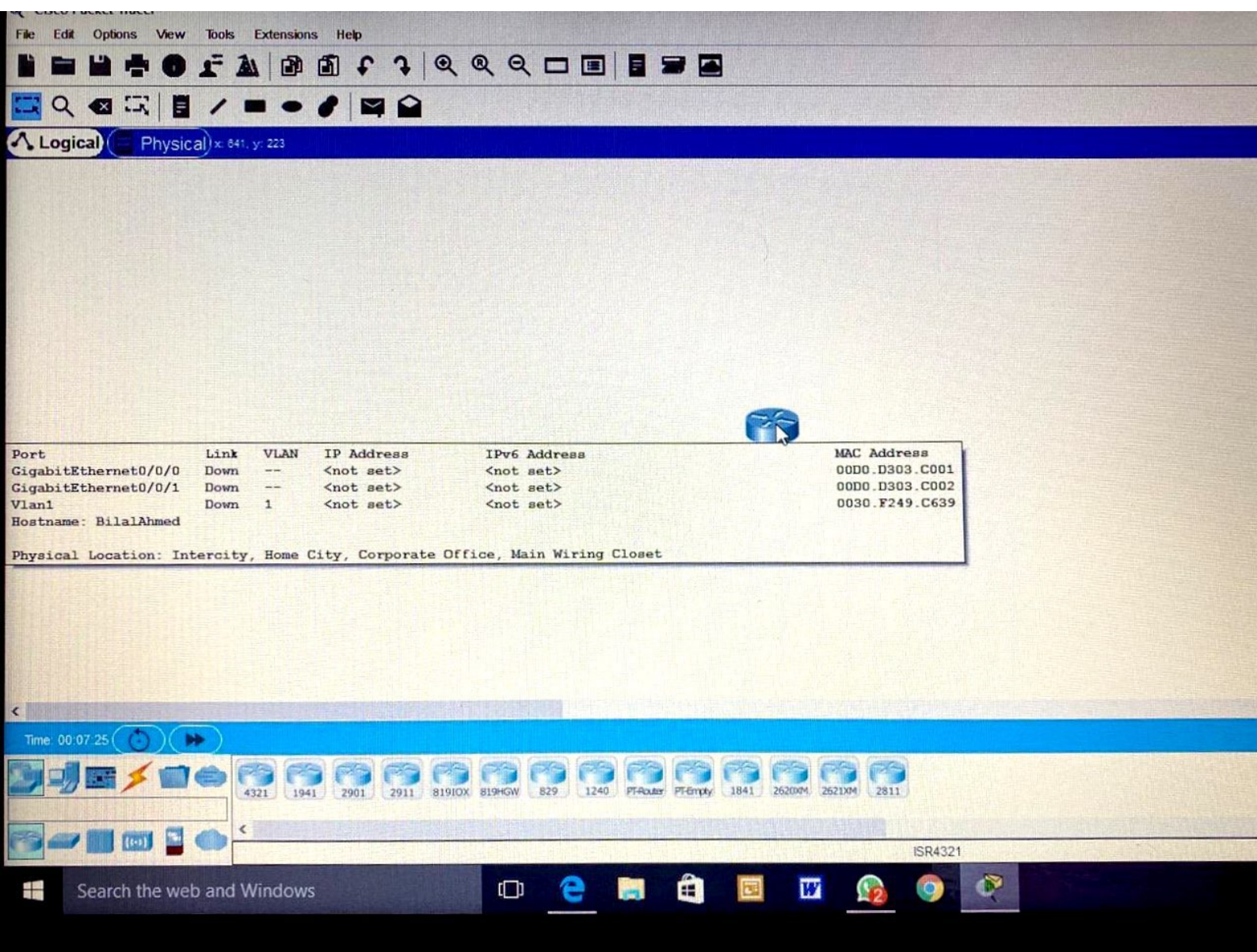
Copper Straight-Through





```
Router0
Physical Config CLI Attributes
IOS Command Line Interface
Would you like to enter the initial configuration dialog? [yes/no]:
no
Press RETURN to get started!
Router>enable
Router#configure console
^
% Invalid input detected at '^' marker.
Router#hostname umairkhanexit
^
% Invalid input detected at '^' marker.
Router#configure terminal
Enter configuration commands, one per line. End with CNTL/Z.
Router(config)#console line 0
^
% Invalid input detected at '^' marker.
Router(config)#password 14596
^
Ctrl+F6 to exit CLI focus
Copy Paste
Top
```





Tools Extensions Help

Question 9: Configure router using command line interface and ping one PC to other and show the results?

```
graph TD; Router0[Router PT Router0] --- PC0[PC-PT PC0]; Router0 --- PC1[PC-PT PC1];
```

PC0

Physical Config Desktop Programming Attributes

Command Prompt

```
Packet Tracer PC Command Line 1.0
C:\>
C:\>ping 192.168.12.2

Pinging 192.168.12.2 with 32 bytes of data:

Request timed out.
Request timed out.
Request timed out.
Request timed out.

Ping statistics for 192.168.12.2:
    Packets: Sent = 4, Received = 0, Lost = 4 (100% loss),

C:\>
```

Top

Realtime