

**NAME: SHARAFAT ALI KHAN**

**ID: 7706**

**SEC "C"**

**8<sup>TH</sup> SEMESTER**

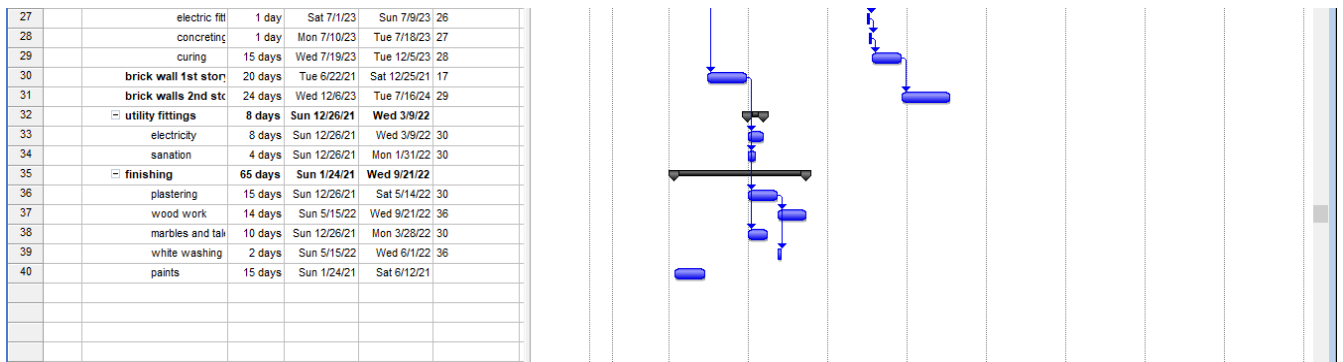
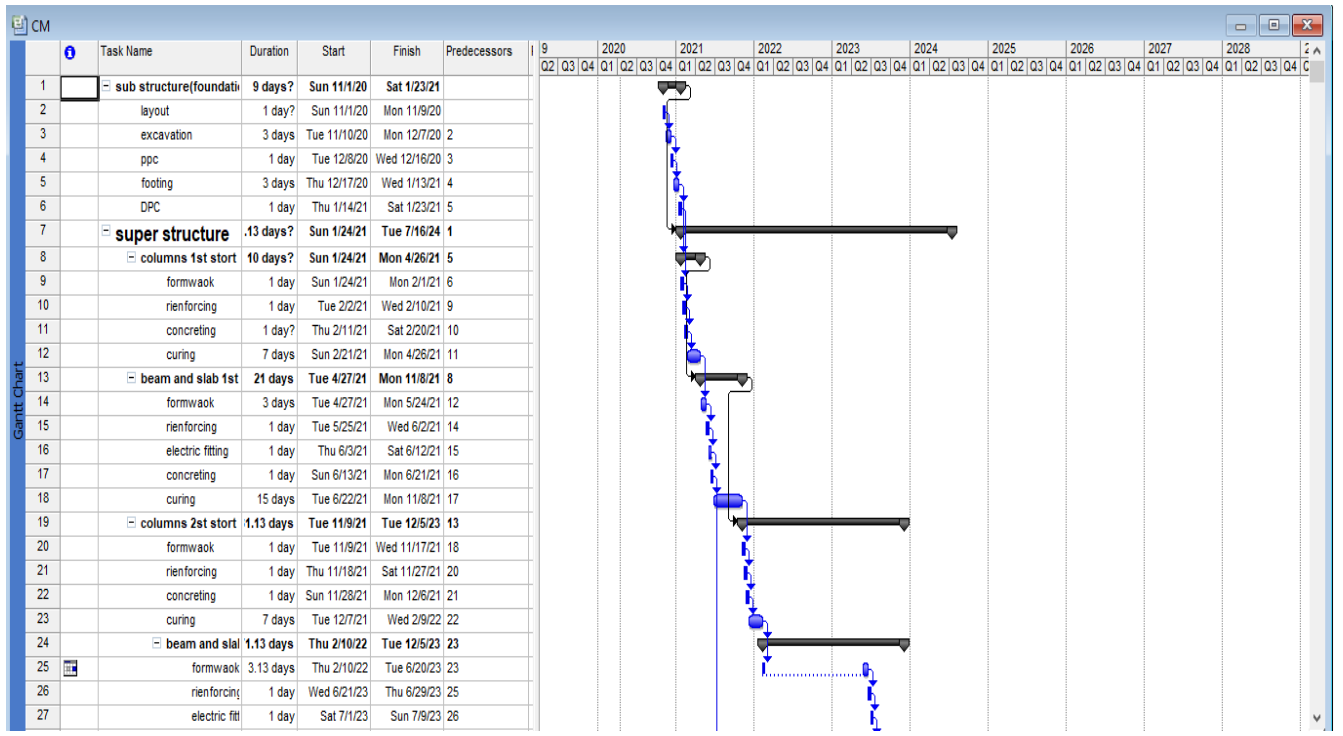
➤ **ACTIVITY LIST:**

Following are the activities performed in the construction of house

- ✓ Planning
- ✓ Survey
- ✓ Mobilization
- ✓ Layout
- ✓ Excavation
- ✓ Foundation
- ✓ Columns
- ✓ Slabs
- ✓ Brick walls work
- ✓ Sanitary fitting
- ✓ Flooring
- ✓ Finishing
- ✓ Wood work

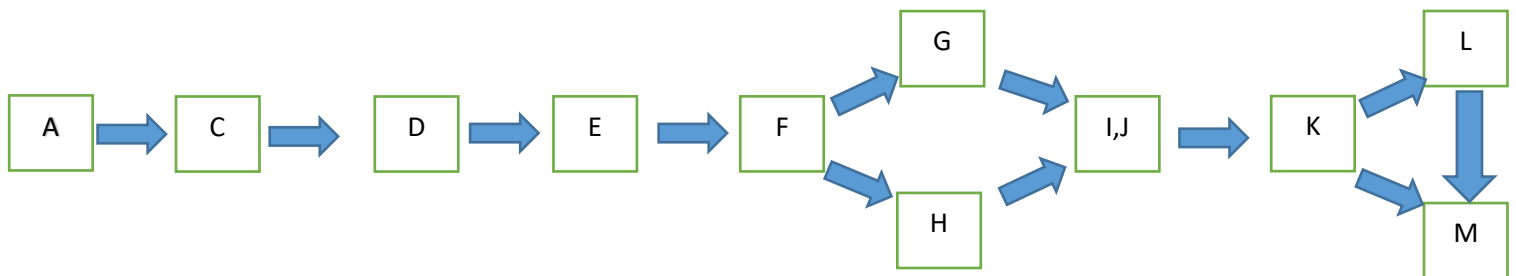
- ✓ Electrification
- ✓ Miscellaneous

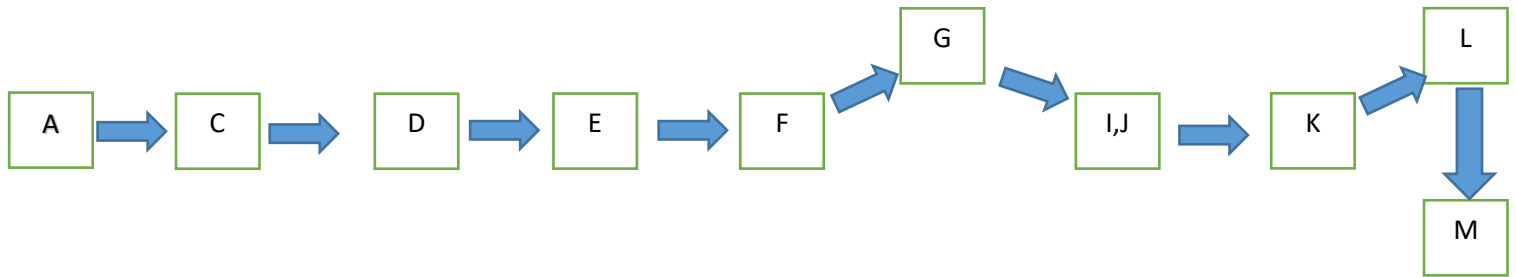
## ○ BREAKDOWN AND TIMELINE OF ACTIVITIES



## ➤ CRITICAL PATH METHOD:

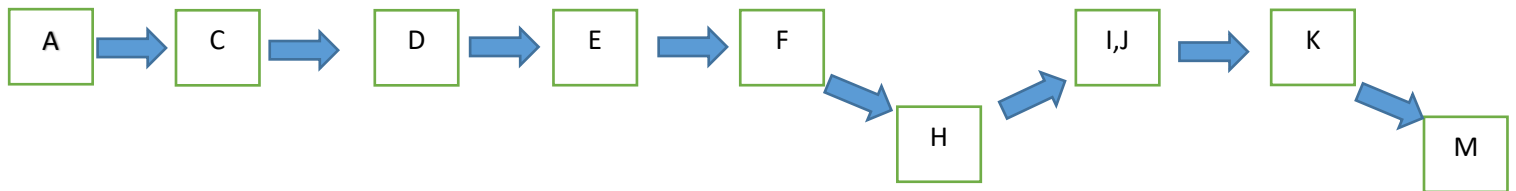
ACTIVITIES		PREDECESSORS	DURATION IN DAYS
SURVEY	A		7
MOBILAZITION	B		7
GRUBBING OF SITE	C	A	1
LAYOUT AND EXCAVATION	D	C	4
FORMWORK	E	D	11
FOUNDATION AND COLUMN	F	E	9
CONCRETING OF BEAMS AND SLAB	G	F	42
BRICKWORK	H	F	44
PLUMBING AND SANITARY WORK	I	G,H	4
ELECTRIFICTION	J	G,H	8
FINISHING	K	I,J	32
FLOORING	L	K	10
WOODWORK	M	K,L	14
MISCELLANEOUS	N		10
			TOTAL DAYS= 203
			TOTAL MONTHS= 6.76





**PATH 1:** A, C, D, E, F, G, IJ, K, L, M

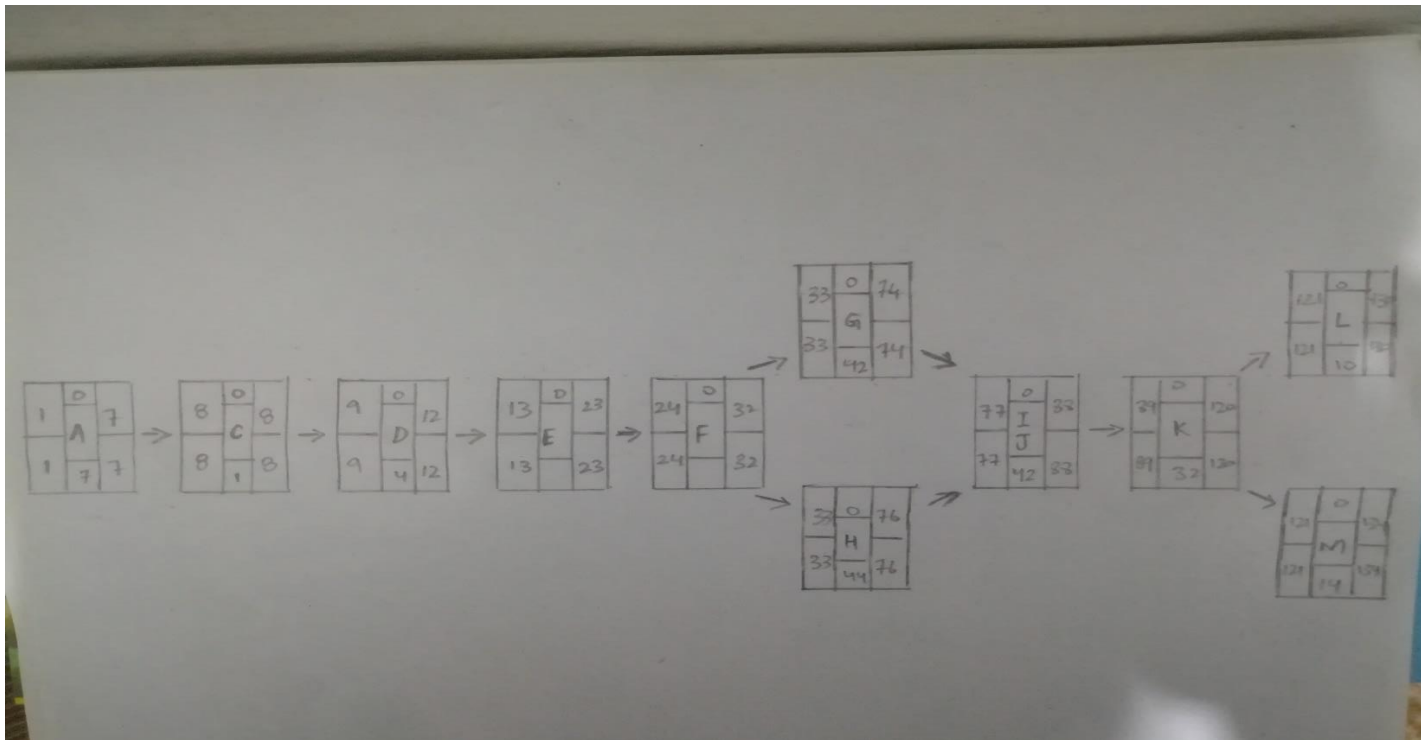
=7+1+4+11+9+42+4+8+32+10+14=142DAYS=4.733MONTHS.



**PATH 2:** A, C, D, E, F, H, IJ, K, M

= 7+1+4+11+9+44+4+8+32+14=134DAYS=4.466

SO the critical path of the project is path "1" which is equal to 4.733 months.



➤ **SLACK FOR THE PROJECT:**

Slack = late finish – early finish

A= 1-1=0

C= 8-8=0

D=9-9=0

E=13-13=0 and so on all values comes zero so no slack

Slack = late start – early start

A= 1-1=0

C= 8-8=0

D=9-9=0

E=13-13=0 and so on all values comes zero so no slack