

Name :- Qazi Azmat Ullah

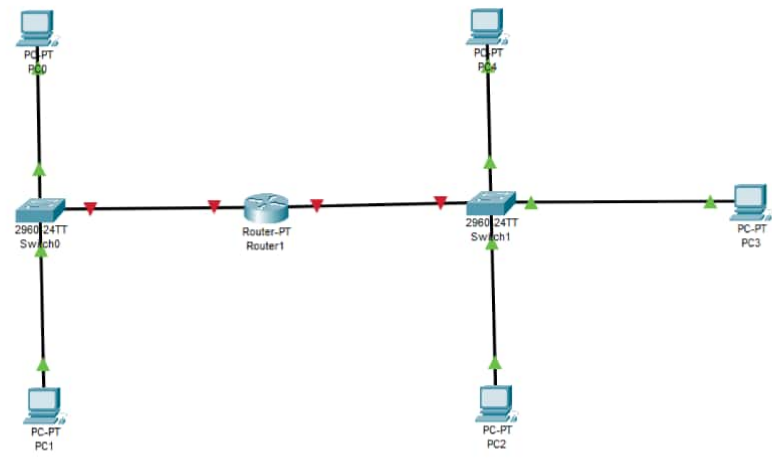
ID# :- 14448

Program :- BSCSE)

Semster :- 4<sup>th</sup>

Subject :- CCN (LAB)

Page 1



# Page 2

router hostname



Router1

Physical Config CLI Attributes

**GLOBAL**  
Settings  
Algorithm Settings

**ROUTING**  
Static  
RIP

**INTERFACE**  
FastEthernet0/0  
FastEthernet1/0  
Serial2/0  
Serial3/0  
FastEthernet4/0  
FastEthernet5/0

Global Settings

Display Name: Router1  
Hostname: QaziAzmat

NVRAM: Erase Save  
Startup Config: Load... Export...  
Running Config: Export... Merge...

Equivalent IOS Commands

```
QaziAzmat (config)#  
QaziAzmat (config)#  
QaziAzmat (config)#end  
QaziAzmat#copy running-config startup-config  
Destination filename [startup-config]?  
Building configuration...  
[OK]  
QaziAzmat#  
%SYS-5-CONFIG_I: Configured from console by console
```

Top

Cisco Packet Tracer

File Edit Options View Tools Extensions Help

Logical Physical x: 799, y: 965

### Page 3 Secret password

```
graph TD
    Router1[Router1] --- Switch0[Switch0]
    Router1 --- Switch1[Switch1]
    Switch0 --- PC0[PC0]
    Switch0 --- PC1[PC1]
    Switch1 --- PC2[PC2]
    Switch1 --- PC3[PC3]
```

Router1 CLI:

```
IOS Command Line Interface

QaziAzmat(config)#
QaziAzmat(config)#
QaziAzmat(config)#enable secret qazi5560
QaziAzmat(config)#
QaziAzmat(config)#exit
QaziAzmat#
%SYS-S-CONFIG_I: Configured from console by console

QaziAzmat#
QaziAzmat#exit

QaziAzmat con0 is now available

Press RETURN to get started.

Ctrl-F6 to exit CLI focus
```

Time: 01:24:14

Realtime Simulation

Automatically Choose Connection Type

Cisco Packet Tracer

File Edit Options View Tools Extensions Help

Logical Physical x: 989, y: 503

Page 4

password

```
graph LR
    Router1[Router-PT Router1] --- Switch0[2960 24TT Switch0]
    Router1 --- Switch1[2960 24TT Switch1]
    Switch0 --- PC0[PC-PT PC0]
    Switch0 --- PC1[PC-PT PC1]
    Switch1 --- PC2[PC-PT PC2]
    Switch1 --- PC3[PC-PT PC3]
```

Router1

Physical Config CLI Attributes

IOS Command Line Interface

```
QaziAzmat (config)#hostname QaziAzmat
QaziAzmat (config)#line console 0
QaziAzmat (config-line)#password 14448
QaziAzmat (config-line)#login
QaziAzmat (config-line)#exit
QaziAzmat (config)#line vty 0 4
QaziAzmat (config-line)#password 14448
QaziAzmat (config-line)#login
QaziAzmat (config-line)#exit
QaziAzmat (config)#exit
QaziAzmat#
%SYS-5-CONFIG_I: Configured from console by console

QaziAzmat#exit
```

QaziAzmat con0 is now available

Ctrl+F6 to exit CLI focus

Copy Paste

Top

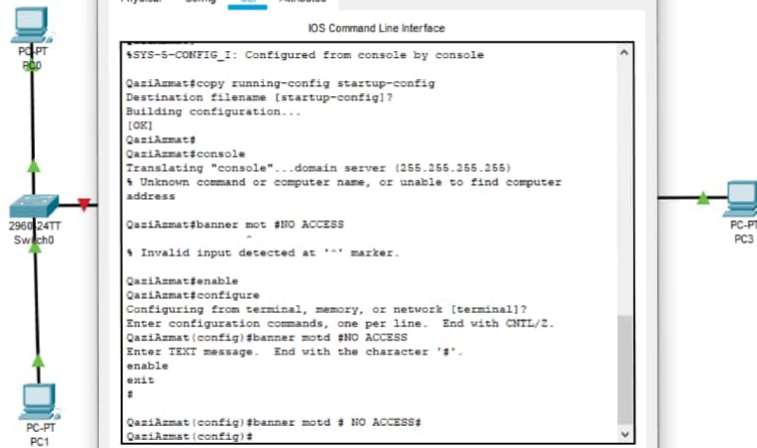
Time: 26:04:00

Realtime Simulation

Automatically Choose Connection Type

Page 5

No Access Banner



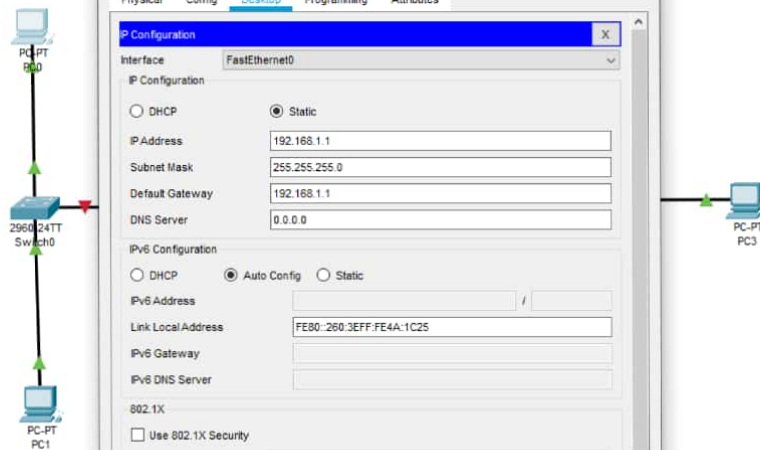
```
Router1
Physical Config CLI Attributes
IOS Command Line Interface

%SYS-5-CONFIG_I: Configured from console by console
QaziAmat#copy running-config startup-config
Destination filename [startup-config]?
Building configuration...
[OK]
QaziAmat#
QaziAmat#console
Translating "console"...domain server (255.255.255.255)
% Unknown command or computer name, or unable to find computer
address
QaziAmat#banner motd #NO ACCESS
% Invalid input detected at '^' marker.
QaziAmat#enable
QaziAmat#configure
Configuring from terminal, memory, or network [terminal]?
Enter configuration commands, one per line. End with CNTL/Z.
QaziAmat(config)#banner motd #NO ACCESS
Enter TEXT message. End with the character '#'.
enable
exit
#
QaziAmat(config)#banner motd # NO ACCESS#
QaziAmat(config)#

Ctrl+F6 to exit CLI focus
```

Page 6

PC 1 IP Address, subnet mask, default gateways



PC0

Physical Config Desktop Programming Attributes

IP Configuration

Interface: FastEthernet0

DHCP  Static

IP Address: 192.168.1.1

Subnet Mask: 255.255.255.0

Default Gateway: 192.168.1.1

DNS Server: 0.0.0.0

IPv6 Configuration

DHCP  Auto Config  Static

IPv6 Address: [ ] / [ ]

Link Local Address: FE80::260:3EFF:FE4A:1C25

IPv6 Gateway: [ ]

IPv6 DNS Server: [ ]

802.1X

Use 802.1X Security

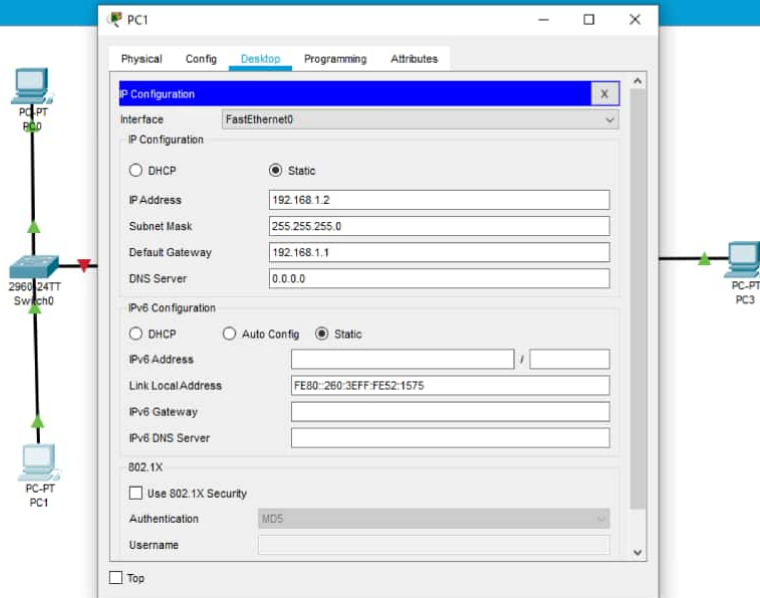
Authentication: MDS

Username: [ ]

Top

Page 7

PC 2 IP Address, subnet mask, default gateways



PC1

Physical Config Desktop Programming Attributes

IP Configuration

Interface: FastEthernet0

IP Configuration

- DHCP
- Static

IP Address: 192.168.1.2

Subnet Mask: 255.255.255.0

Default Gateway: 192.168.1.1

DNS Server: 0.0.0.0

IPv6 Configuration

- DHCP
- Auto Config
- Static

IPv6 Address: [ ] / [ ]

Link Local Address: FE80::260:3EFF:FES2:1575

IPv6 Gateway: [ ]

IPv6 DNS Server: [ ]

802.1X

- Use 802.1X Security

Authentication: MDS

Username: [ ]

Top



Physical Config **Desktop** Programming Attributes

## IP Configuration ✕

Interface **FastEthernet0** ▾

### IP Configuration

DHCP  Static

IP Address

Subnet Mask

Default Gateway

DNS Server

### IPv6 Configuration

DHCP  Auto Config  Static

IPv6 Address  /

Link Local Address

IPv6 Gateway

IPv6 DNS Server

### 802.1X

Use 802.1X Security

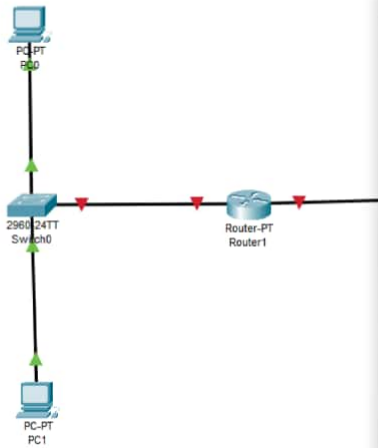
Authentication  ▾

Username

Top

Page 9

PC 4 IP Address, subnet mask, default gateways



PC3 Configuration Window

Physical Config Desktop Programming Attributes

IP Configuration

Interface: FastEthernet0

IP Configuration

- DHCP
- Static

IP Address: 192.168.1.4

Subnet Mask: 255.255.255.0

Default Gateway: 192.168.2.1

DNS Server: 0.0.0.0

IPv6 Configuration

- DHCP
- Auto Config
- Static

IPv6 Address: [ ] / [ ]

Link Local Address: FE80-2603EFFF-FEBB-D34C

IPv6 Gateway: [ ]

IPv6 DNS Server: [ ]

802.1X

- Use 802.1X Security

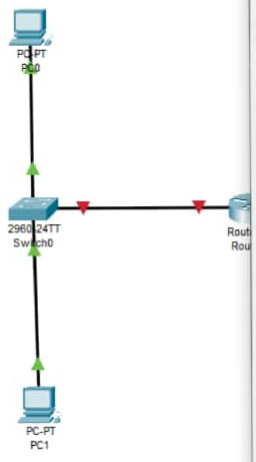
Authentication: MD5

Username: [ ]

Top

Page 10

PC 5 IP Address, subnet mask, default gateways



PC4

Physical Config Desktop Programming Attributes

IP Configuration

Interface FastEthernet0

IP Configuration

DHCP  Static

IP Address 192.168.1.5

Subnet Mask 255.255.255.0

Default Gateway 192.168.2.1

DNS Server 0.0.0.0

IPv6 Configuration

DHCP  Auto Config  Static

IPv6 Address

Link Local Address FE80::2E0:B0FF:FEA5:BA56

IPv6 Gateway

IPv6 DNS Server

802.1X

Use 802.1X Security

Authentication MDS

Username

Top

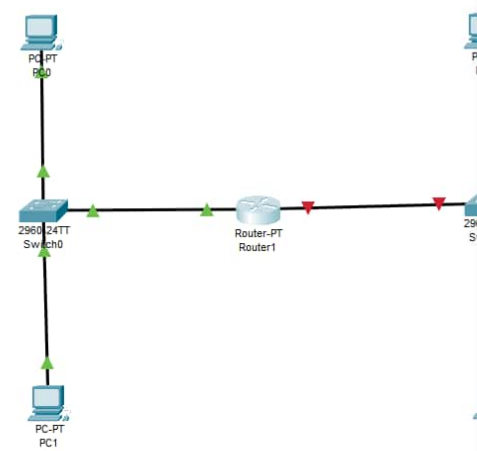
Cisco Packet Tracer

File Edit Options View Tools Extensions Help

Logical Physical x: 1302, y: 484

Page 11

Router IP address, subnet mask



```
QaziAzmat(config)#interface FastEthernet1/0
QaziAzmat(config-if)#
QaziAzmat(config-if)#exit
QaziAzmat(config)#interface FastEthernet0/0
QaziAzmat(config-if)#
QaziAzmat(config-if)#ip add
% Incomplete command.
QaziAzmat(config-if)#ip address 192.168.1.1 255.255.255.0
QaziAzmat(config-if)#end
QaziAzmat#
%SYS-5-CONFIG_I: Configured from console by console

QaziAzmat#configure terminal
Enter configuration commands, one per line. End with CNTL/Z.
QaziAzmat(config)#interface fastEthernet 0/0
QaziAzmat(config-if)#no shu

QaziAzmat(config-if)#
%LINK-5-CHANGED: Interface FastEthernet0/0, changed state to up
%LINEPROTO-5-UPDOWN: Line protocol on Interface FastEthernet0/0,
changed state to up

QaziAzmat(config-if)#end
QaziAzmat#
%SYS-5-CONFIG_I: Configured from console by console

QaziAzmat#wi
```

Ctrl+F6 to exit CLI focus

Copy Paste

Top

Time: 26:49:37

Realtime Simulation

Automatically Choose Connection Type