



Name : Muhammad Musa

Department : BS(CS)

Semester : 4th

ID # : 15366

Assignment : Mid Term Assignment

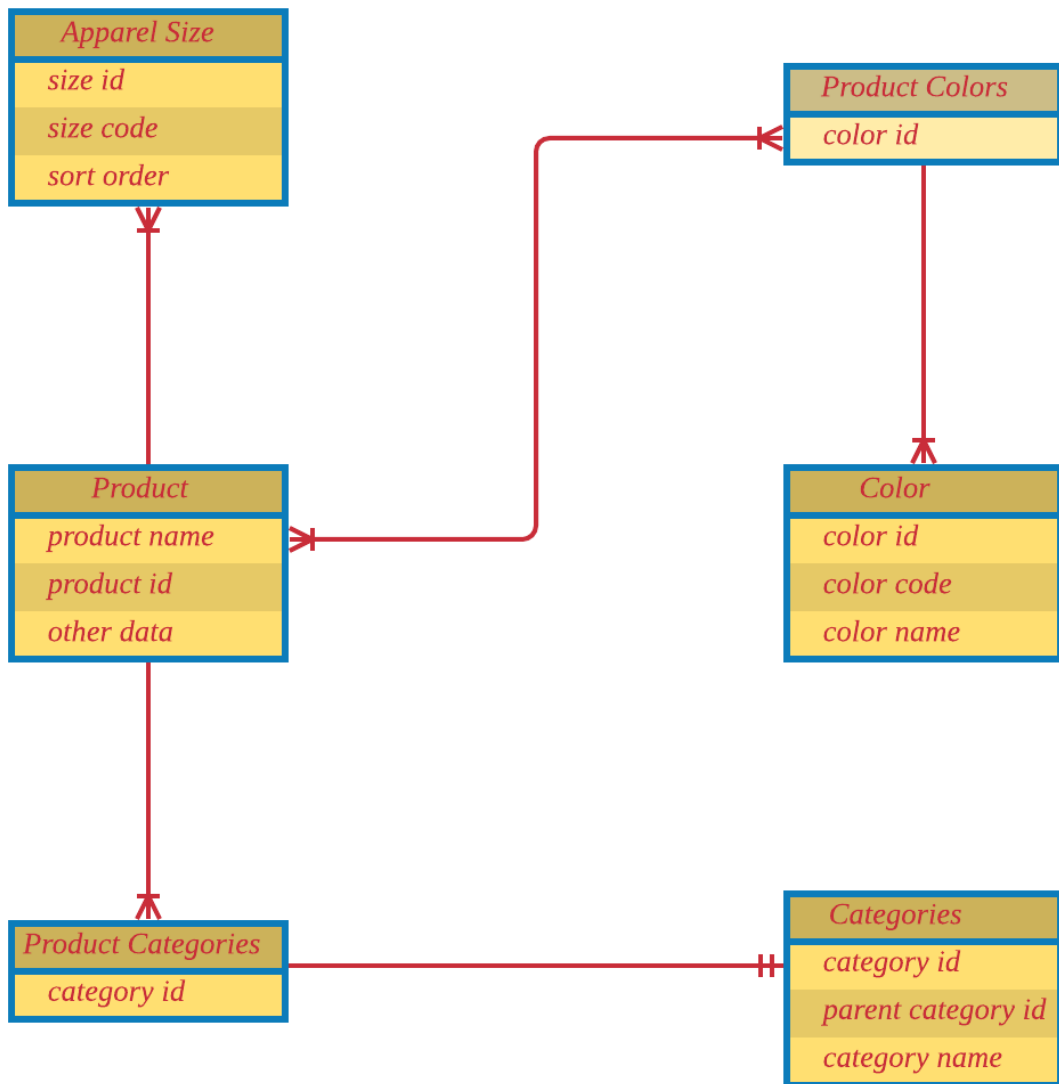
Subject : Database System (LAB)

Submitted To : Ma'am Rimsha Khan

Dated : 26th April 2020

Q: Draw the following ERD in Lucidchart or Draw.io.

Ans:



Screenshot:

The screenshot displays the Lucidchart Entity Relationship Diagram (ERD) editor interface. The main workspace shows a database schema with the following entities and their attributes:

- Apparel Size**: size id, size code, sort order
- Product Colors**: color id
- Product**: product name, product id, other data
- Color**: color id, color code, color name
- Product Categories**: category id
- Categories**: category id, parent category id, category name

The relationships between these entities are as follows:

- Apparel Size** is connected to **Product** via a relationship line.
- Product** is connected to **Product Colors** via a relationship line.
- Product Colors** is connected to **Color** via a relationship line.
- Product Categories** is connected to **Product** via a relationship line.
- Product Categories** is connected to **Categories** via a relationship line.

The interface includes a top navigation bar with 'File Edit Select View Insert Arrange Share Help What's New Saved', a toolbar with various editing tools, and a sidebar with 'Standard', 'Entity Relationship', and 'Flowchart' categories. The bottom status bar shows the current document name 'Entity Relationship Di...', a zoom level of 49%, and the system tray with the date and time '05:12 PM 26/04/2020'.