

SOCIOLOGY ASSIGNMENT

NAME ASMA KHAN

ROLL NO 16985

BS HND

Question no 1

What is importance of historical context of society?



SOCIETY

Society is a group of individuals involved in persistent social interaction or large social group sharing the same social territory.

Societies are

characterized by patterns of relationships between individuals who share distinctive culture .
Societies construct patterns of behavior with in a society known as [society norms](#).

HISTORICAL CONTEXT:

Background information or prior knowledge help to identify the influence of culture or history.

Historical context of society is the social, political, culture, economic and environmental situations that influence the events or trends we see happened during that time.

IMPORTANCE OF HISTORICAL CONTEXT OF SOCIETY:

A history of society is an organization dedicated to preserving, collecting, researching and interpreting historical information. These societies were created as a way to help future generations understand their heritage.

So the question arises how society begin? Depending on human society, the history of society could starts; when first started to employ agriculture as a primary method of obtaining food. They hunted animals for food and their seasonal camps usually followed migration. They situated their camps in caves or natural rock shelters or many known archaeological sites where they were situated and making their own societies with own rules.

Society is important the purpose of society is basically to serve individual's need for survival. It is a way of harnessing the resources and abilities of others in order to increase individual's quality of life.

Pioneer of sociology is Auguste comte: coined the term sociology The study of social world through scientific method.

Auguste comte believed a theoretical science society and systematic investigation of behavior were needed to improve society'' to understand science of society , it is necessary to know it's history. He used the scientific methods to identify what holds society together (positivism). Thought that the study of society could bring about social reform. He believe in the uni-linear theory that human knowledge and society passes through certain definite progressive evolutionary stages. So society is important because society is culture, it is civilization society passes through well-defined stages in the course of its development.

Hit by the COVID-19 slump followed by social distancing and nationwide lock down situation, business are experiencing major impacts no matter how established they are and are having to re-looks how they manage and operate their business. It has become very challenging for most businesses to keep their financial wheels turning toward the lockdown period due to less revenue churn and the general uncertainty in the global financial environment.

The global lock down of education, institutions is going to cause major interruption in students learning , disruption in internal assessments for qualification. Many countries have decided to close schools, colleges and universities .

Poor societies affected by COVID-19 lockdown the most. In poor countries the lockdown cure could be worse than disease. Lockdown makes life unbearable. It is harder to impose a lockdown in poorer country than in rich one. In most high income countries, stay at home orders have been a cornerstone of coronavirus response but we are learning quickly that low income doesn't fit very well with the need of developing world these consequences are proving to be deadly Hence coronavirus lockdown are having devastating consequences in low income countries.

Transportation sector has been one of the primary victims of COVID-19 from rickshaws to airlines all have been affected economically. Transportation has been adversely hit.

Rise in unemployment is an other devastating issue due to lockdown. Many businesses have been forced to reduce operations or shut down.and increasing number of people are expected to lose their jobs.

Pandemic lockdown is having devastating consequences businesses, economy, trade, transportation , unemployment rate all are on low sources .In this poorer countries, poor families suffering the most for their basic needs and facilities.

«
»

Question no 3

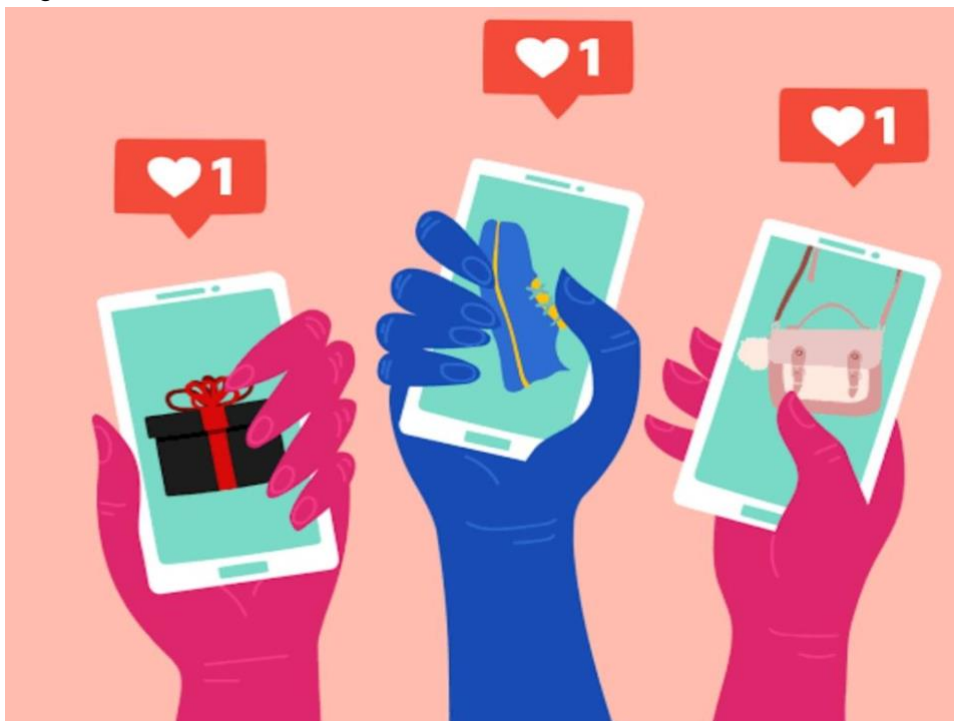
Nowadays social media is influential agent of socialization explain why?

AGENT OF SOCIALIZATION:

People and groups that show influence on self concept , attitude and behaviour. Social media is one of the agent of socialization.

SOCIAL MEDIA

We live in a time and age where information is just a button press away. We are swayed by information all around us. Social media plays a big role in our lives today. We have the access to any kind of information. The power of social media is very high and has expended effects on each individual. It is difficult to imagine our lives without social media. Social media is collection of websites , applications



and other platforms that enable us to share or create context and also help us to participate in social networking .There are lots of strong tools that social media provides and have high impact and far reaching.

Social media are interactive computer-mediated technologies that facilitate the creation or sharing of information , ideas , career interests. Social media facilitate the development of online social networks connecting a user’s profile with those of other individuals or groups have access via web-based apps on desktops and laptops other mobile services e.g smartphoneand tablets

There is no doubt that a modern day teenagers life is built around social media and usage of technology as a result of society's heavy reliance on technology, social media has become popular amongst people who are “technologically advanced”.Though there is a wide variety of social sites that can be accessed through modern day technology, a few have become very popular. Social sites which have becomes widely popular among teens including **Instagram, Facebook,snapchat**. These social networking sites provides instant social connection and support while letting teens post and send pictures of their every day life.

SOCIAL MEDIA is an ever growing and fast developing means of communication in society and with vast amount of new technology constantly. The internet itself has opened up a new spectrum and has trained us to expect to gain information on demand at any time and from anywhere.

Technology has changed rapidly in the past five years, we became more reliant on our smart phones and it completely changed the way we communicate with each other in our daily life it made it easier for us to interact with people across the world those who are abroad relatives, with a single touch through social networking sites. It has grown tremendously at an unexpected fast rateand has captured millions of users around world.

As agent of socialization, social media is a source of fast growing culture and becomes popular .Culture is the values and norms that socialization teaches us how do we apply those norms in our daily life. It has great influence on our communications, attitudes , behaviour on our life style. So in socialization social media is the most influential agent.

