

Pg = 1

Name = Tania
id = 13985
Date = 29-09-2020
Subject = Garment History

Fill in the blanks.

Women's movement was in the year **1948**

The day dress was also called **Ropa and Semadress**.

Tabular Silhouette were introduced in **1928**

Cavalier style for men emerged in **1650-1800** era

Neckties were made of **17 century** in Victorian era.

Note:

Attempt ALL questions.

Explain the following dresses:

Lounge gowns

Walking out dresses

Evening or ballroom gowns.

Pg = 2

Ans | Walking dresses were worn to see and be seen. They are often referred to as Promenade Dresses, a very literal definition of their purpose. The short spencer jacket, coming only to the waist of the dress, just below the bosom, can be seen in figure 1, 2, 7.

The best-ones are a little bit thick without being cumbersome; fuzzy with pilling; and may be a little bit colorful to add a splash of cheer and whimsy to your everyday loungewear.

A summer bathrobe can be worn as loungewear, after your shower, first thing in the morning and if you pick the right look, it can be used as a cover up to complement your assortment of swim wear at the pool or spa.

If you see a loungewear set you like in a magazine or catalog and if it's too pricey for you, here's where your

Pg = 3

sewing skills can save some money while still outfitting you in the pajamas you crave. While many other sleepwear and pajama makers are focusing on past designs, this designer is forward moving and pioneers new looks, new styles and even brings a progressive twist to men's loungewear.

A Pea in the Pod:

Featuring designer maternity wear (some styles are favourites of celebrities), this store carries everything from loungewear to skirts of all lengths of cashmere maternity sweaters.

An evening gown, evening dress or gown is a long, flowing dress usually worn at formal occasions. The drop ranges from ballerina (mid-calf to just above the ankles), tea (above the ankles), to full length. Evening gowns are

Pg = 4

usually made of luxuries fabrics such as chiffon, velvet, satin, organza etc.

Definition of ball gown:

A ball gown is floor-length dress to be worn to formal black tie and white tie occasions. It is the most formal (and fancy!) type of dress, and traditionally has a full skirt and fitted bodice.

Because of their dressy nature, ball gowns are usually crafted in luxuries or expensive fabrics like silk, taffeta and velvet, and may be trimmed with pearls, precious gems or intricate, hand-stitched embroidery.

However, with the rise of fast fashion and the desire by more people to emulate the looks of the runway and the red carpet, gown-style dresses are also available in fabrics and style from stores like Macy's, Bloomingdale's, Caste and more.

Pg = 5

b. Mention bullets points of the 2 looks from 1980's.

FASHION OF THE 1980's: placed heavy emphasis on expensive clothes and fashion accessories. Apparel tended to be very bright and vivid in appearance. Women expressed an image of wealth and success through shiny costume jewelry, such as large faux-gold earrings, pearl necklaces, and clothing covered with sequins and diamonds. Punk fashion began as a reaction against both the hippie movement of the past decades and the materialist values of the current decade. The first half of the decade was relatively tame in comparison to the second half, which is when the iconic 1980s color scheme had come into popularity.

Hair in the 1980's was typically big, curly, buffant and heavy.

styled. Television shows such as Dynasty helped popularize the high volume bouffant and glamorous image associated with it. Women from the 1980s wore bright, heavy makeup. Everyday fashion in the 1980s consisted of light colored lips, dark and thick eyelashes, and pink or red rouge (otherwise known as blusk).

Contents:

1. Usage
- 1.1 Other use
2. Bullet points
3. Computer usage
 - 3.1) In historical systems
 - 3.2) In Unicode
 - 3.3) In web pages.
 - 3.4) In windows
 - 3.5) In Latex
 - 3.6) Wiki markup.
4. Other forms of use
5. References
6. Further reading
7. External links

Pg = 7

BEST PRACTICES FOR BULLET POINTS:

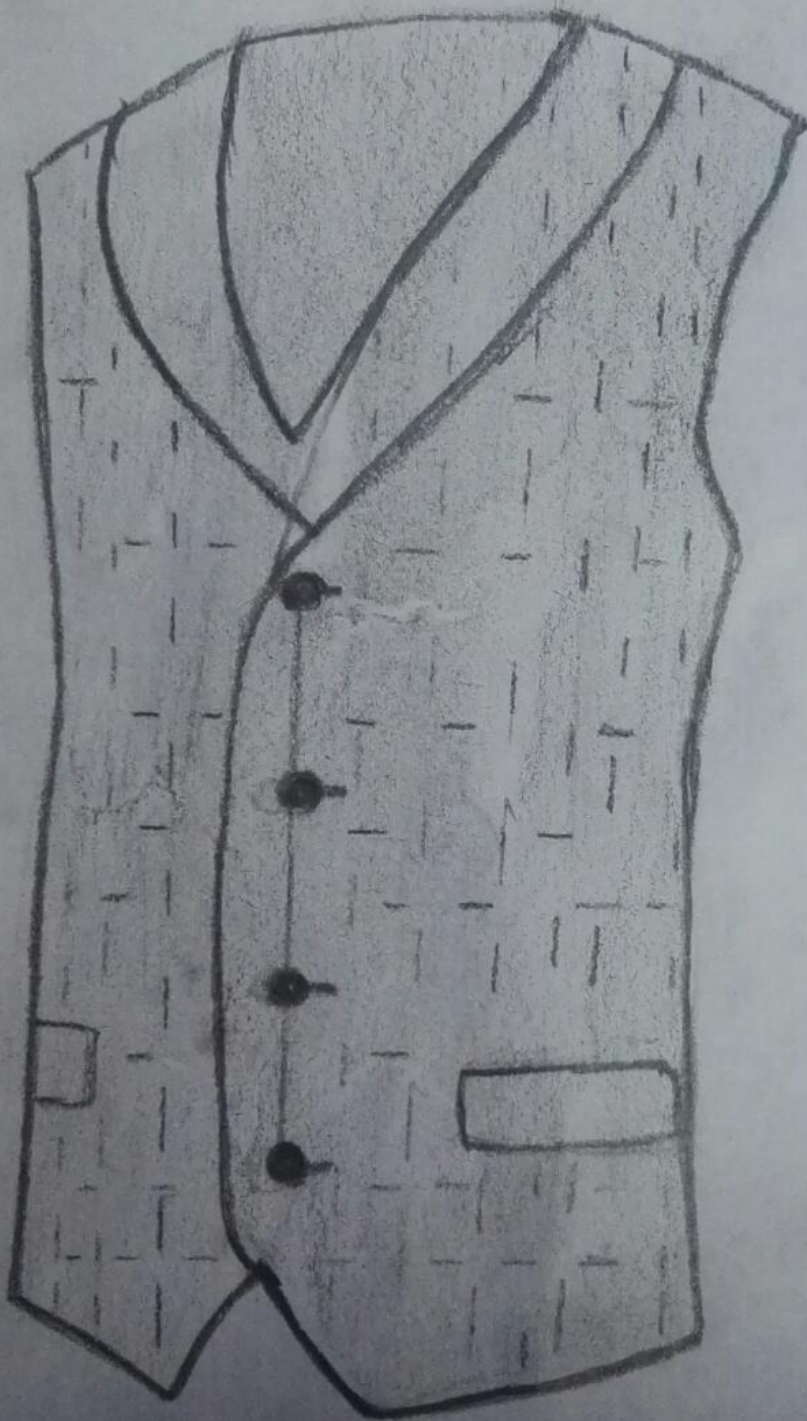
1. ^{Emphasize} the beginning of the bullet points as in this list when the first few words capture the main idea.
2. Make bullet points consistent in structure.
3. Punctuate bullets consistently.
4. Avoid ~~ending~~ making bullet points so long that they look like paragraphs.

Bullets:

are used in place of numbers when the order of the literal items in the list is not important. There are many forms of bullets to choose from. The most common forms are the heavy black dot (•) and the open circle (○). Other common bullet choices include squares (filled and open), diamond, dashes and checkmarks.



scurve silhouett



Vest