

NAME: Mudassir Khan

ID : 7890

Section : A

Assignment : 084

Subject: Strucher Analysis

Date : 13/7/20

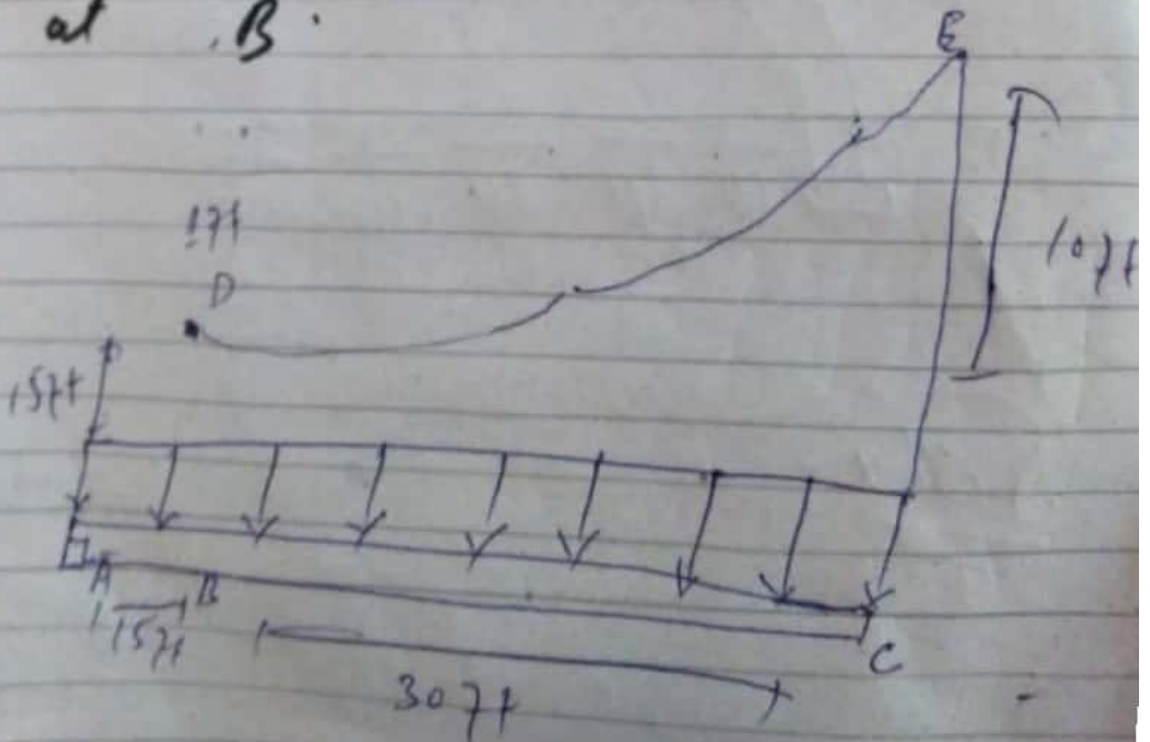
①

Cables And Arches

Question # 01

Determine the maximum and minimum tension in the parabolic cable and the force in each of the hinges.

The girder is subjected to the uniform load and is pin connected at B.



②

Solu:

Member BC

$$\sum F_H = 0$$

$$B_H = 0$$

Member AB

$$\sum F_H = 0$$

$$A_H = 0$$

moment at A

$$\sum M_A = 0 \quad F_H(11) - B_y(15)(7.5)$$

FBD

$$\sum M_C = 0 - F_H(10) - B_y(30) + (45)(30)$$

$$F_H = 153.4$$

$$B_y = 0$$

(3)

$$w_0 = \frac{2F_H h}{L^2} = \frac{2(153.4)(110)}{30L}$$

$$= \frac{3068}{30} = 3.40$$

$$w_0 = 3.40 \text{ k/ft}$$

$$F_{\max} = w_0 L \sqrt{1 + \left(\frac{L}{2H}\right)^2}$$

$$= 3.4(30) \sqrt{1 + \left(\frac{30}{2(110)}\right)^2}$$

$$F_{\max} = 183.6 \text{ k}$$

Each hanger carries 5 ft of w_0

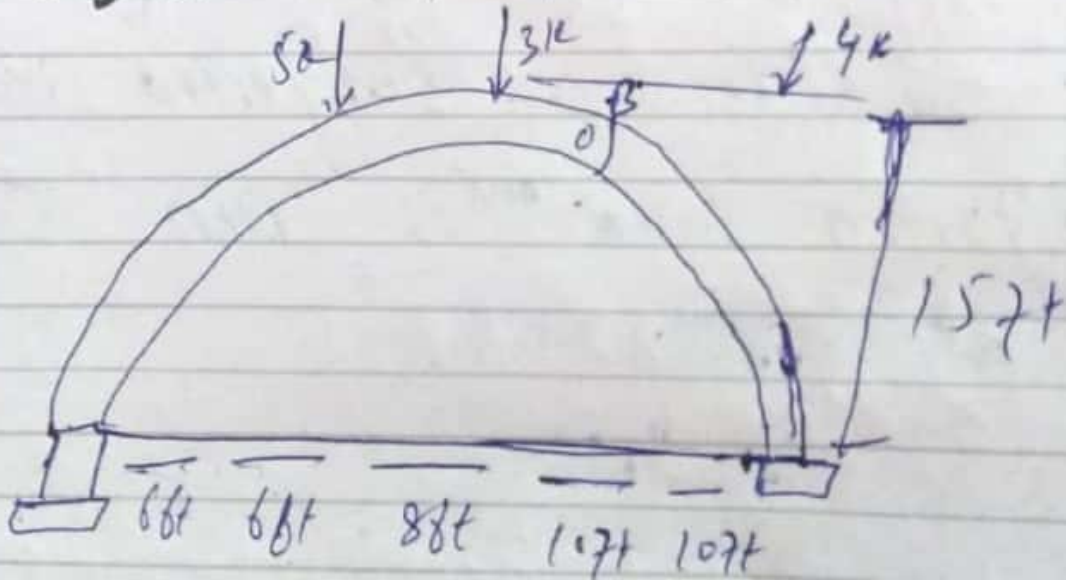
$$T = (5 \text{ ft})(3.4 \text{ k/ft})$$

$$T = 17 \text{ k}$$

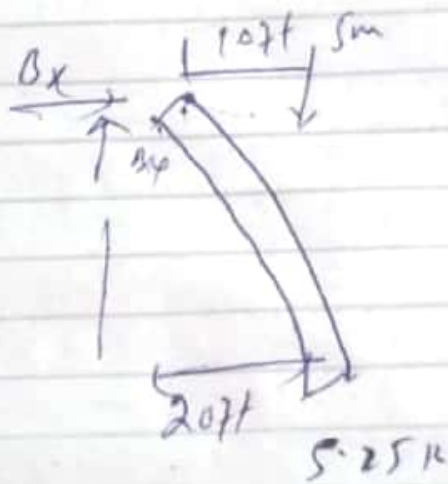
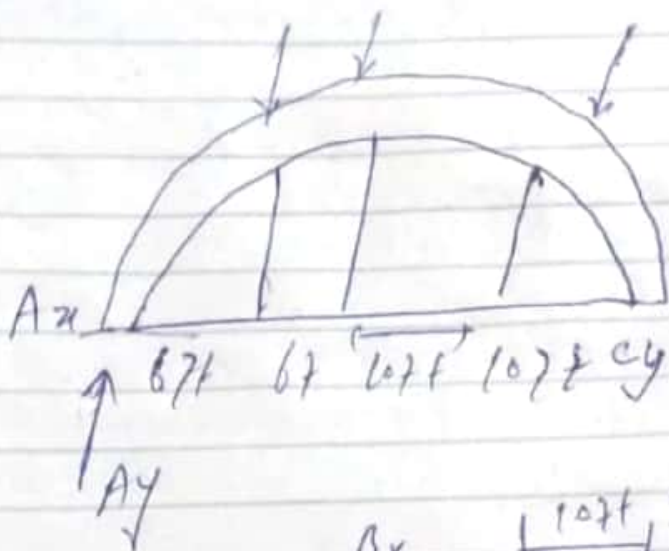
(4)

Q #02

The tied three-hinged arch is subjected to the loading shown. Determine the component of reaction at A and C and the tension in the rod.



Solu:



Entire Arch:

$$\hookrightarrow + \sum M_A = 0; \quad -4(6) - 3(2) - 5(30) +$$

$$C_y(40) = 0$$

$$C_y = 5.25 \text{ k}$$

(6)

$$\uparrow \sum F_y = 0$$

$$A_y + 5 \cdot 25 - 4 - 3 = 5 = 0$$

$$A_y = 6.75 \text{ k}$$

$$\rightarrow \sum F_x = 0 \quad A_x = 0$$

Section BC =

$$\curvearrowright \sum M_B = 0$$

$$-5(10) - 1(15) + 5 \cdot 25(20) = 0$$

$$T = 3.67 \text{ k}$$

————— X —————