

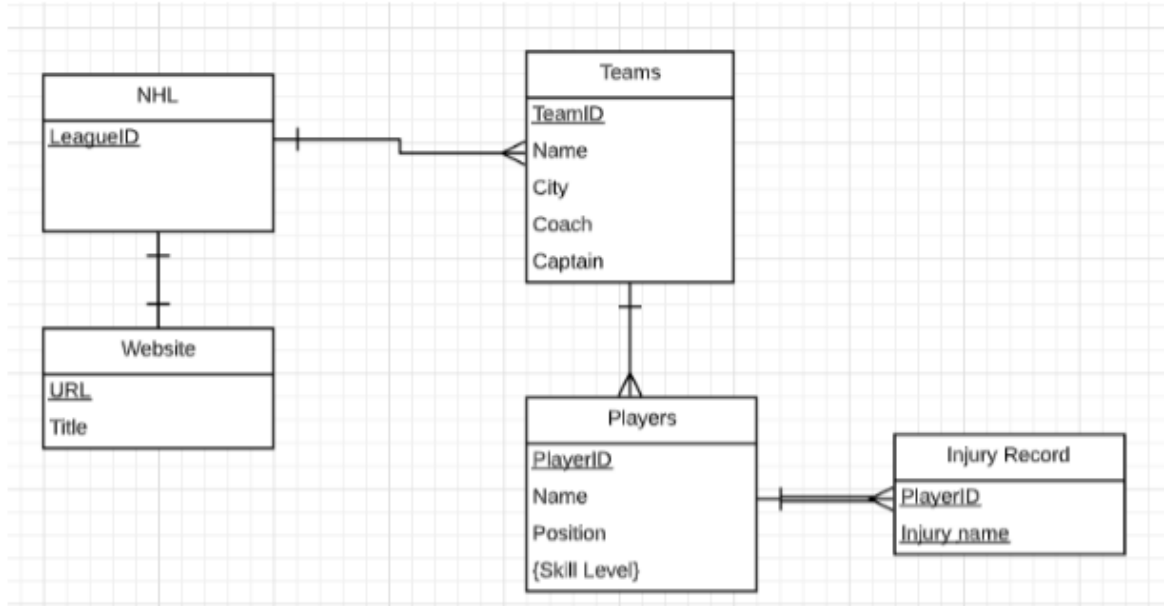
NAME: Manahil khan
ID# 14525
SUBJECT: DATABASE SYSTEM
ASSIGNMENT NO: 3rd
DEPARTMENT: BS CS 4th
SUBMITTED TO: Maam Rimsha
DATE : 31/05/2020

Q1: Using the following business rules create your own ERD.

Following requirements for a simple database for the National Hockey League (NHL):

- the NHL has many teams,
- these teams only belong to NHL
- each team has a name, a city, a coach, a captain, and a set of players,
- each player belongs to only one team,
- each player has a name, a position (such as left wing or goalie), a skill level, and a set of

- injury records NHL has an official website.
- The website has a unique URL and title.



Q2: Now convert the ERD made in Q1 to Rational Model.

