

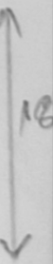
Name = Subhan ulah

ID # = 14772

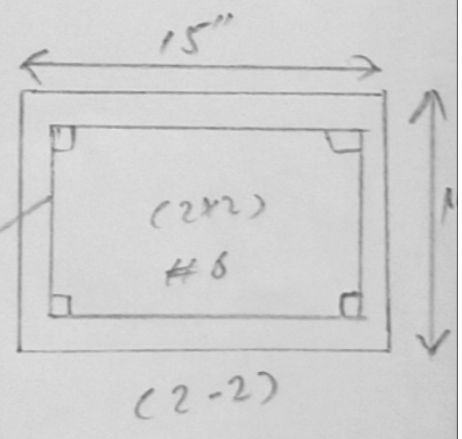
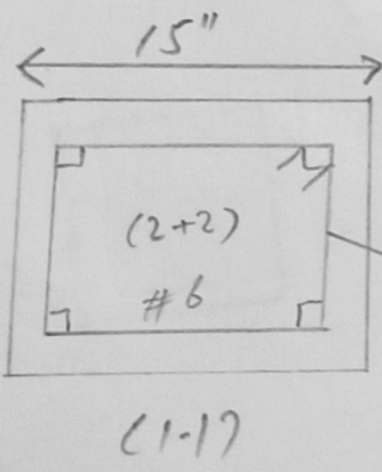
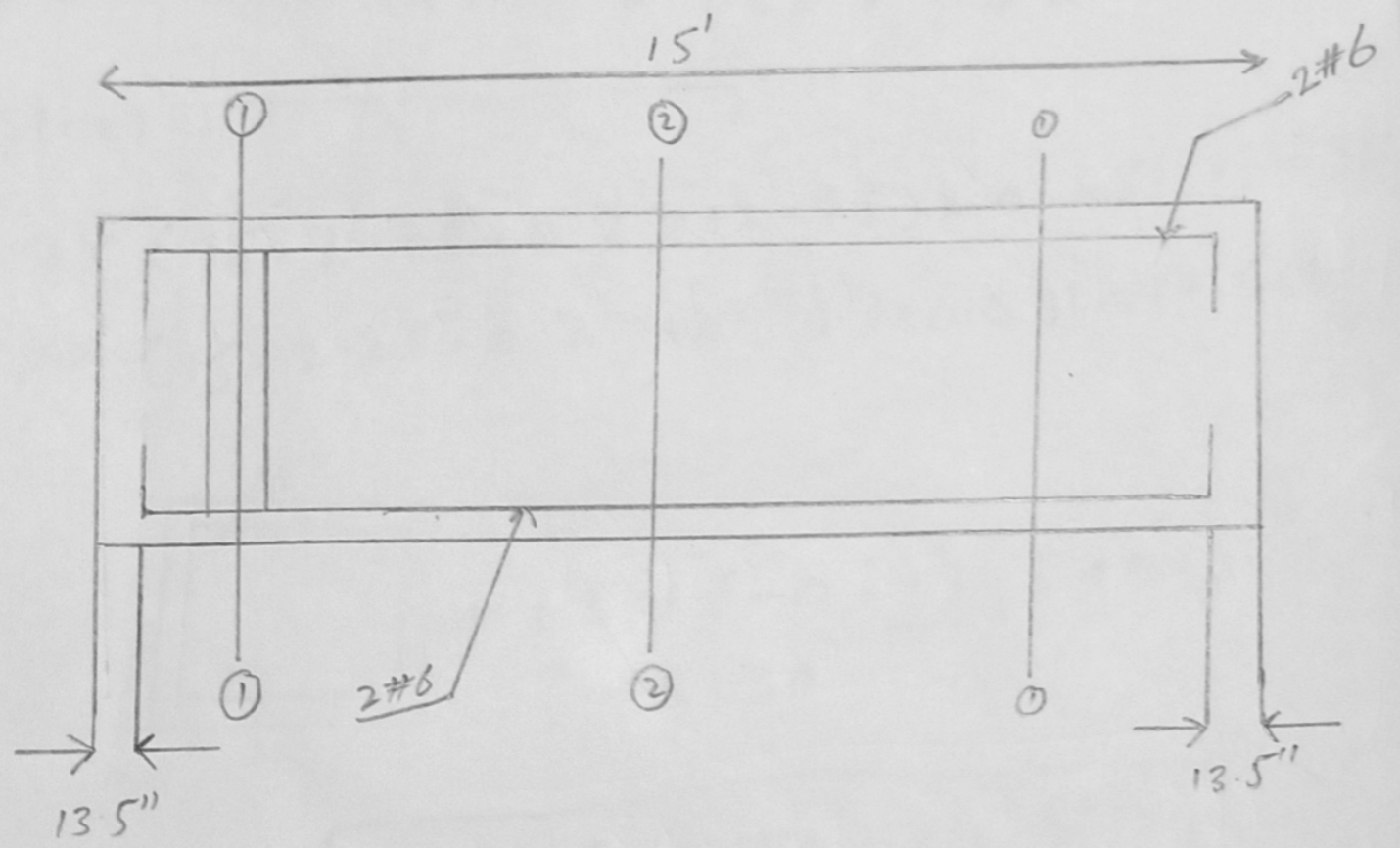
Quantity survey & contract

Document.

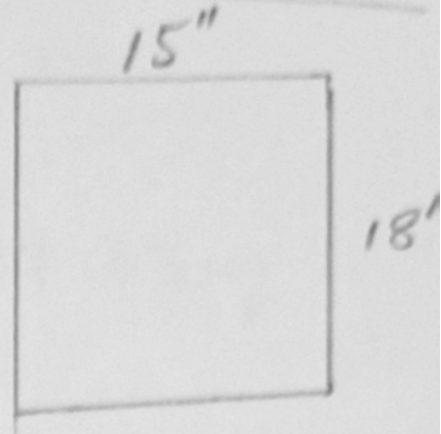
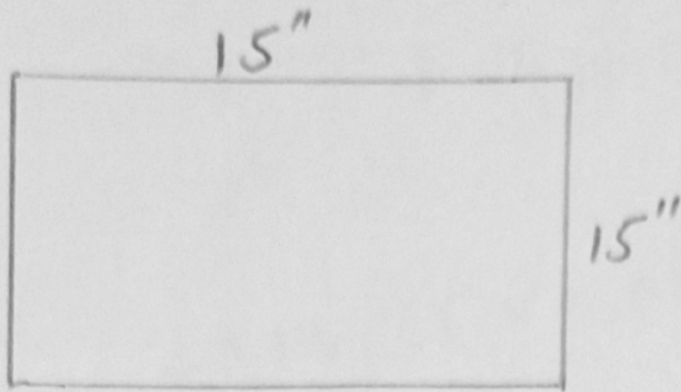
(B.Tech Civil)



Q: Estimate the quantities of RCC work for the given Beam. (50)



#3 @ 5" c/c

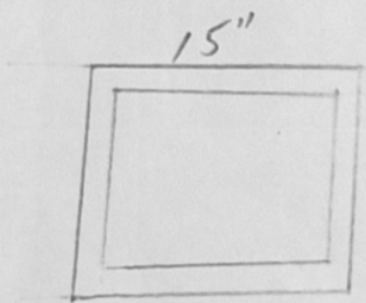


R.C.C. concrete = 15' x 1.25 x 1.6 =

Steel

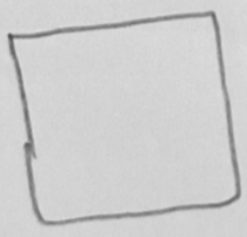
$$2 * (15 - 2 - 25 + 0.2 = 12.95) * 0.681 = 17.63 \text{ kg}$$

$$2 * (15 - 2.25 + 0.2 = 12.95) * 0.681 = 17.63 \text{ kg}$$



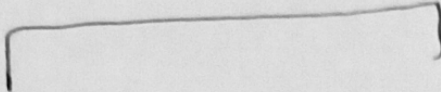
$$18'' 1.5 + 1.5 - 0.1 + 1.25 + 1.25 - 0.1 = 5.30$$

$37 * 5.5 * 0.17 = 34.59 \text{ kg}$



= 37 No's of bers

page = NO = 3

 = 4 No's of bars

$$2 \times 12.95 \times 0.681 = 17.63 \text{ kg}$$