

## SESSIONAL ASSIGNMENT-Spring 2020

**NAME:** Muhammad junaid

**Student ID:** 14608

**Subject:** Database System

**Submitted To:** Rimsha khan

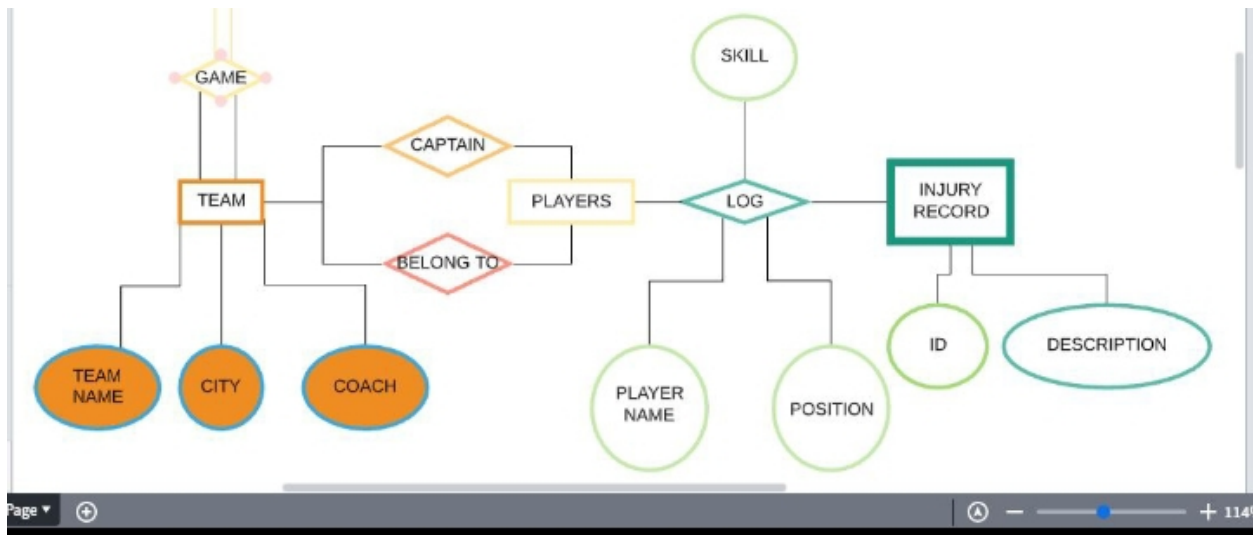


Q1: Using the following business rules create your own ERD.

Following requirements for a simple database for the national Hockey league (NHL):

- The NHL has many teams.
- These teams only belong to NHL
- Each team has a name, a city, a coach, a captain, and a set of players,
- Each player belongs to only one team,
- Each player has a name, a position (such as left wing or goalie), a skill level, and a set of injury records
- NHL has an official website.
- The website has a unique URL and title

ANS:



Q2: Now convert the ERD made in Q1 to a rational Model?

Ans:

