



IQRA NATIONAL UNIVERSITY  
Phase II, Hayatabad Peshawar

Student: Hayat Ahmad Khan

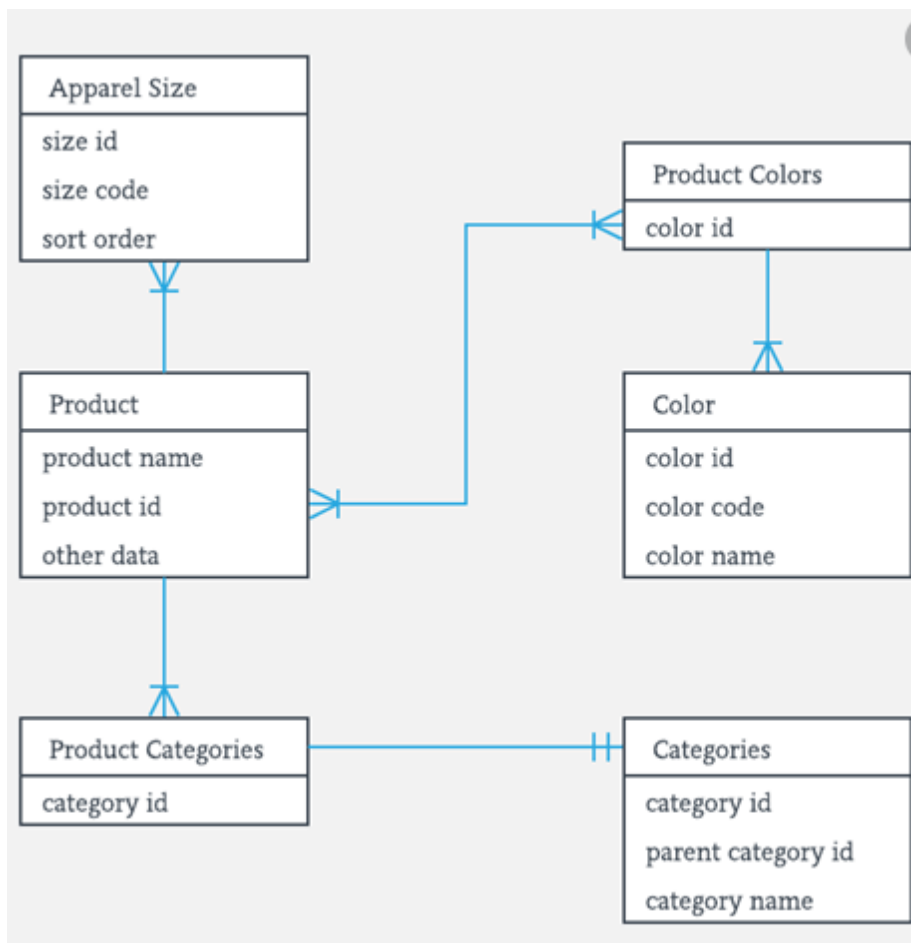
ID# 14486

Dept: BS (CS)

paper: Data Base (lab)

## Mid Term Lab Assignment

Q1: Draw the following ERD in Lucidchart or Draw.io.



Answer: Entity relationship diagram



IQRA NATIONAL UNIVERSITY  
Phase II, Hayatabad peshawer

Student: Hayat ahmad khan

ID# 14486

Dept: BS (CS)

paper: Data Base (lab)

The screenshot shows a Lucidchart document titled "Data base mid lab" with a database diagram. The diagram includes the following entities and relationships:

- Apparel size**: Attributes: size id, size code, sort order.
- product**: Attributes: product name, product id, Other data.
- product categories**: Attributes: product id, category.
- product Colors**: Attributes: color id.
- color**: Attributes: color id, color code, color name.
- categories**: Attributes: category id, parent category id, category name.

Relationships:

- Apparel size (1) to product (many): 1:many relationship.
- product (1) to product Colors (many): 1:many relationship.
- product (1) to product categories (many): 1:many relationship.
- product Colors (1) to color (many): 1:many relationship.
- categories (1) to product categories (many): 1:many relationship.

The interface includes a top navigation bar with "File Edit Select View Insert Arrange Share Help What's New Saved", a toolbar with "Shapes", "Entity Relationship", and "My Saved Shapes" panels, and a bottom taskbar with Windows search, taskbar icons, and system tray information (5:01 pm, 26/04/2020).