

Sessions Assignment

Name	Asad khan
id	14944
subject	network and communication
submit to	sir (ghassan ghusain)
dept	BS(CS) 4 TH
Date	03/06/2020

task n0 1

first open the cisco then add a router and connect 3 pcs
then configure the router using cammand line
and give the ip address sub mask and deaefault gateway
to them

IP Configuration

IP Configuration

- DHCP Static

IP Address	192.168.1.2
Subnet Mask	255.255.255.0
Default Gateway	192.168.1.1
DNS Server	

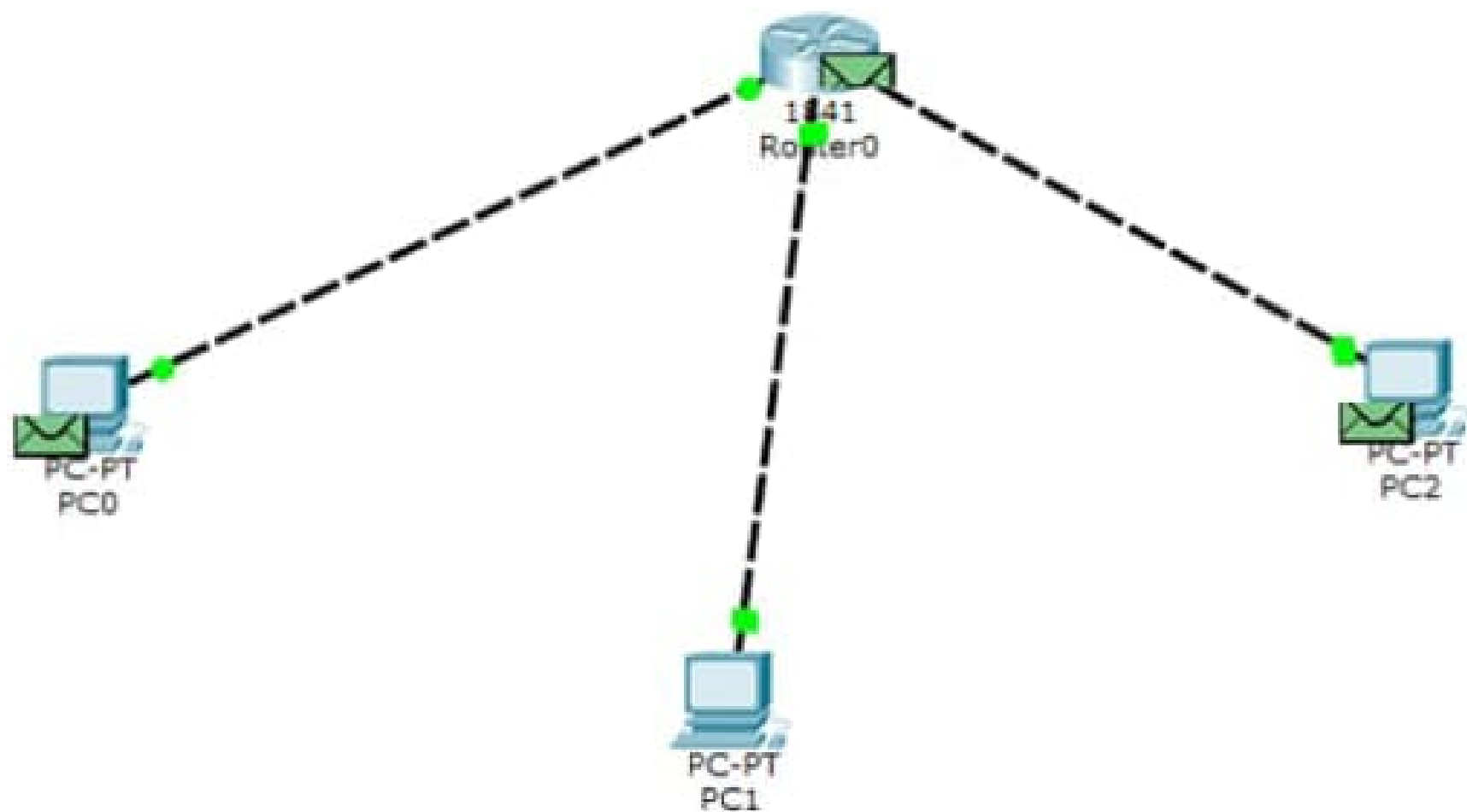
IPv6 Configuration

- DHCP Auto Config Static

IPv6 Address	
Link Local Address	FE80::201:C7FF:FE02:1225
IPv6 Gateway	
IPv6 DNS Server	



and then we can communicate with each other pcs we can see below a final result



IP Configuration



IP Configuration

DHCP Static

IP Address 192.168.1.3

Subnet Mask 255.255.255.0

Default Gateway 192.168.1.1

DNS Server

IPv6 Configuration

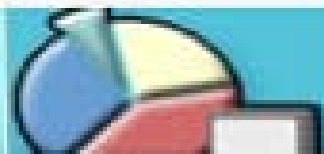
DHCP Auto Config Static

IPv6 Address /

Link Local Address FE80::205:5EFF:FE3A:E549

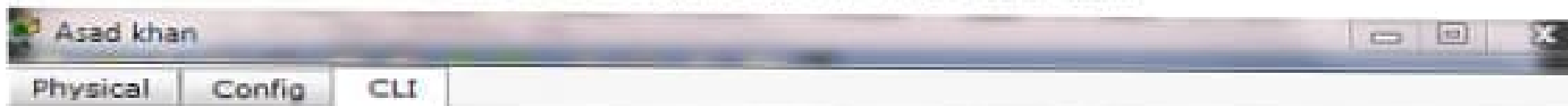
IPv6 Gateway

IPv6 DNS Server



Task no 2

in this task we should to show the hostname with my name Asadkhan and also show the password which both we can see below password is asad and host name is Asadkhan



IOS Command Line Interface

```
Asadkhan(config)#
Asadkhan(config)#end
Asadkhan#copy running-config startup-config
Destination filename [startup-config]?
Building configuration...
[OK]
Asadkhan#
%SYS-5-CONFIG_I: Configured from console by console

Asadkhan#en
Asadkhan#config t
Enter configuration commands, one per line. End with CNTL/Z.
Asadkhan(config)#hostname Asadkhan
Asadkhan(config)#password asad
_

% Invalid input detected at '--' marker.

Asadkhan(config)#password asad
_

% Invalid input detected at '--' marker.

Asadkhan(config)#line console 0
Asadkhan(config-line)#password asad
Asadkhan(config-line)#login
Asadkhan(config-line)#exit
Asadkhan(config)#line vty 0 4
Asadkhan(config-line)#password asad
Asadkhan(config-line)#login
Asadkhan(config-line)#exit
Asadkhan(config)#
```

IOS Command Line Interface

```
% Invalid input detected at '^' marker.

Asadkhan@show running_config
^
% Invalid input detected at '^' marker.

Asadkhan@show run
Building configuration...

Current configuration : 652 bytes
!
version 12.4
no service timestamps log datetime msec
no service timestamps debug datetime msec
no service password-encryption
!
hostname Asadkhan
!
!
!
enable secret 5 $1$mERr#9cTjUIEq#QurQiFU.2eC11
!
!
!
!
!
!
ip cef
no ipv6 cef
--More--
```

IOS Command Line Interface

Asadkhan con0 is now available

Press RETURN to get started.

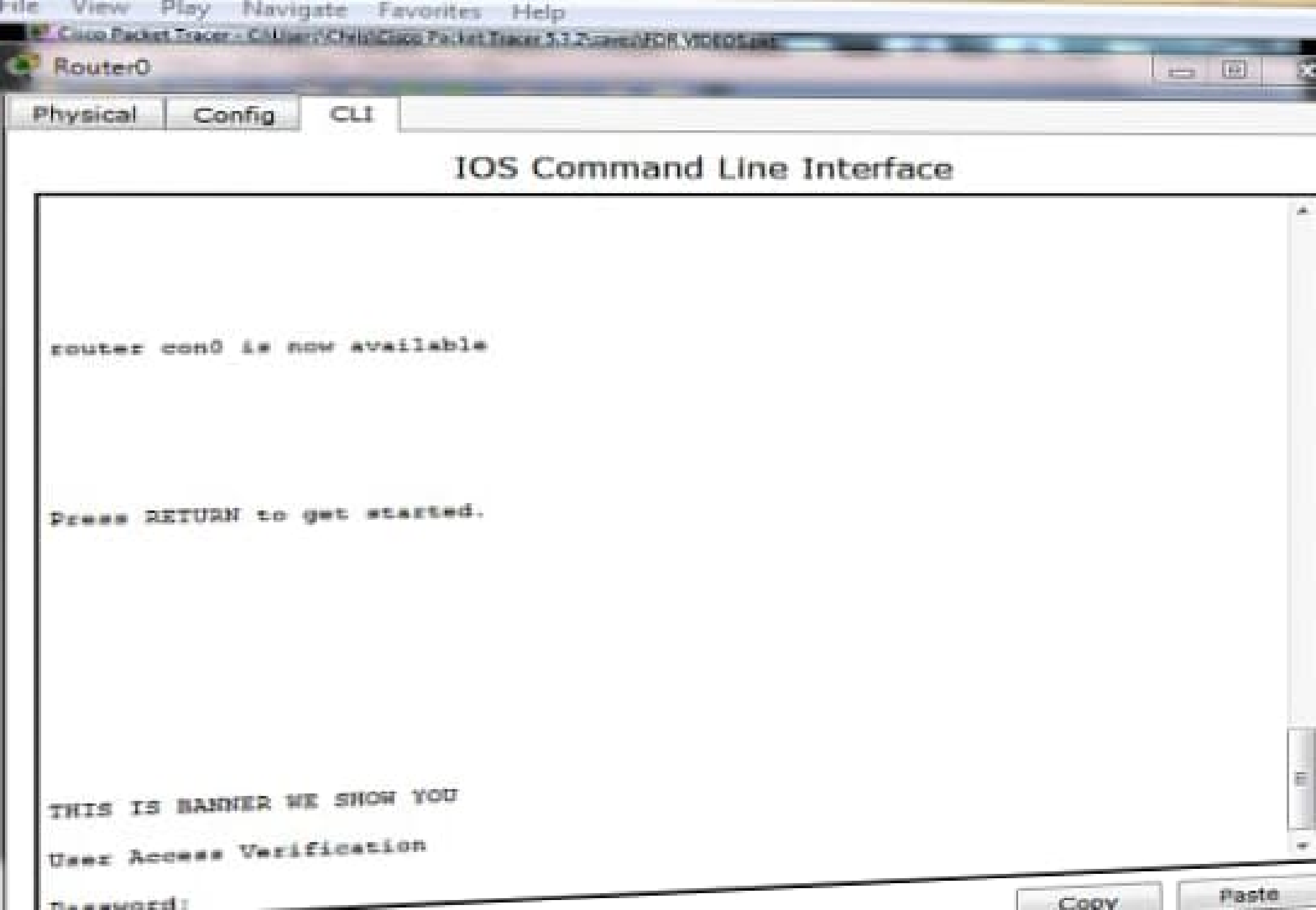
NO ACCESS

User Access Verification

Password:

Copy

Paste



Physical

Config

CLI

IOS Command Line Interface

router con0 is now available

Press RETURN to get started.

THIS IS BANNER WE SHOW YOU

User Access Verification

Password:

Copy

Paste

IOS Command Line Interface

Switch con0 is now available

Press RETURN to get started.

THIS SWITCH BANNER

User Access Verification

Password:

Switch0

Physical

Config

CLI

IOS Command Line Interface

```
Model number: WS-C2950-24
```

```
System serial number: FNM061020MC
```

```
Cisco Internetwork Operating System Software
```

```
IOS (tm) C2950 Software (C2950-I6Q4L2-M), Version 12.1(22)EA4, RELEASE  
SOFTWARE(fc1)
```

```
Copyright (c) 1986-2005 by Cisco Systems, Inc.
```

```
Compiled Wed 19-May-06 22:31 by jharirba
```

```
Press RETURN to get started!
```

```
Switch>
```

```
Switch>en
```

```
Switch#config t
```

```
Enter configuration commands, one per line. End with CNTL/Z.
```

```
Switch(config)#line console 0
```

```
Switch(config-line)#password asadpc
```

```
Switch(config-line)#login
```

```
Switch(config-line)#exit
```

```
Switch(config)#password asadpc
```

```
^
```

```
^ Invalid input detected at '^' marker.
```

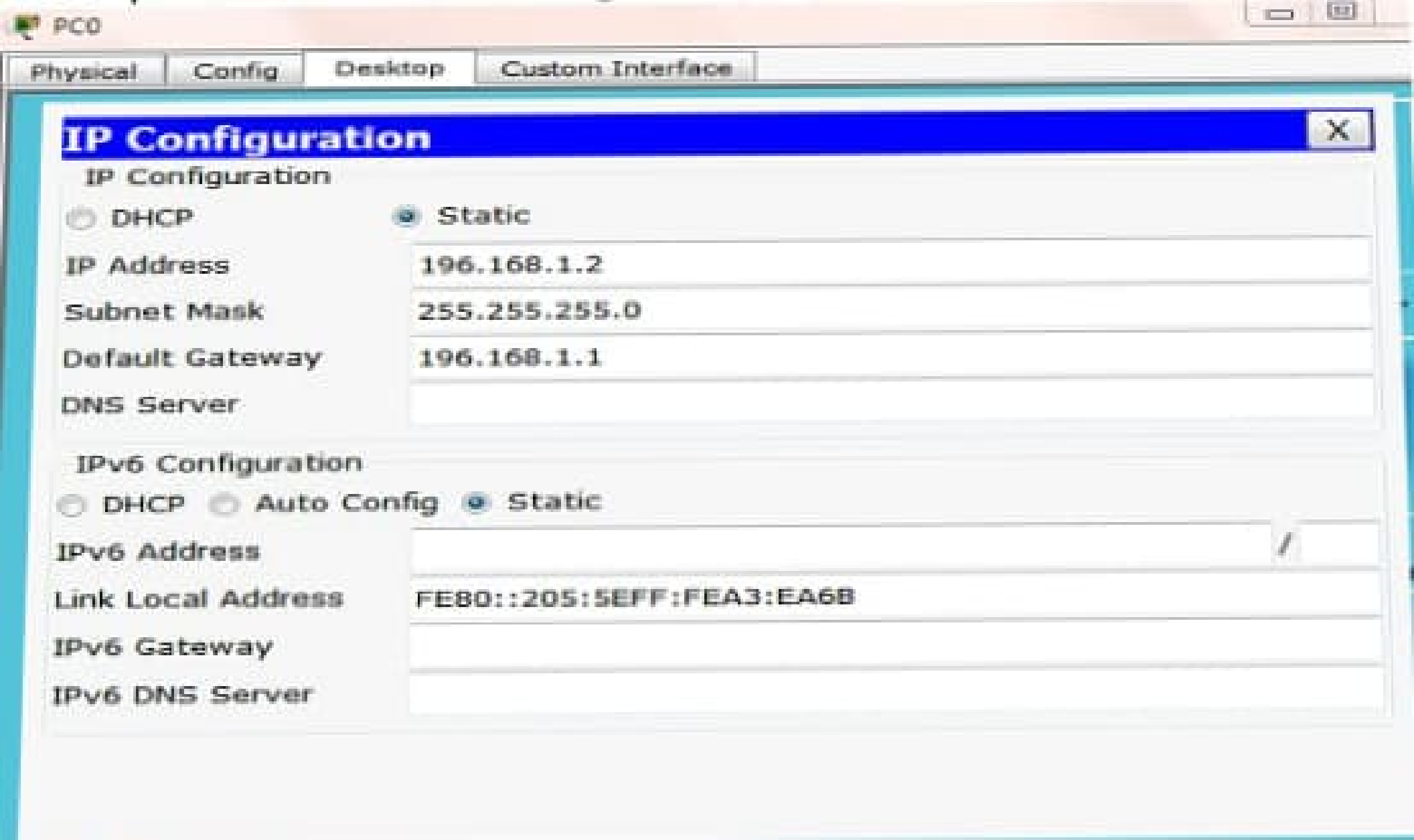
```
Switch(config)#line vty 0 4
```

```
Switch(config-line)#password asadpc
```

```
Switch(config-line)#login
```

```
Switch(config-line)#exit
```

```
Switch(config)#
```



IP Configuration

IP Configuration

DHCP Static

IP Address 196.168.1.2

Subnet Mask 255.255.255.0

Default Gateway 196.168.1.1

DNS Server

IPv6 Configuration

DHCP Auto Config Static

IPv6 Address /

Link Local Address FE80::205:5EFF:FEA3:EA6B

IPv6 Gateway

IPv6 DNS Server

IP Configuration

IP Configuration

 DHCP Static

IP Address

196.168.1.3

Subnet Mask

255.255.255.0

Default Gateway

196.168.1.1

DNS Server

IPv6 Configuration

 DHCP Auto Config Static

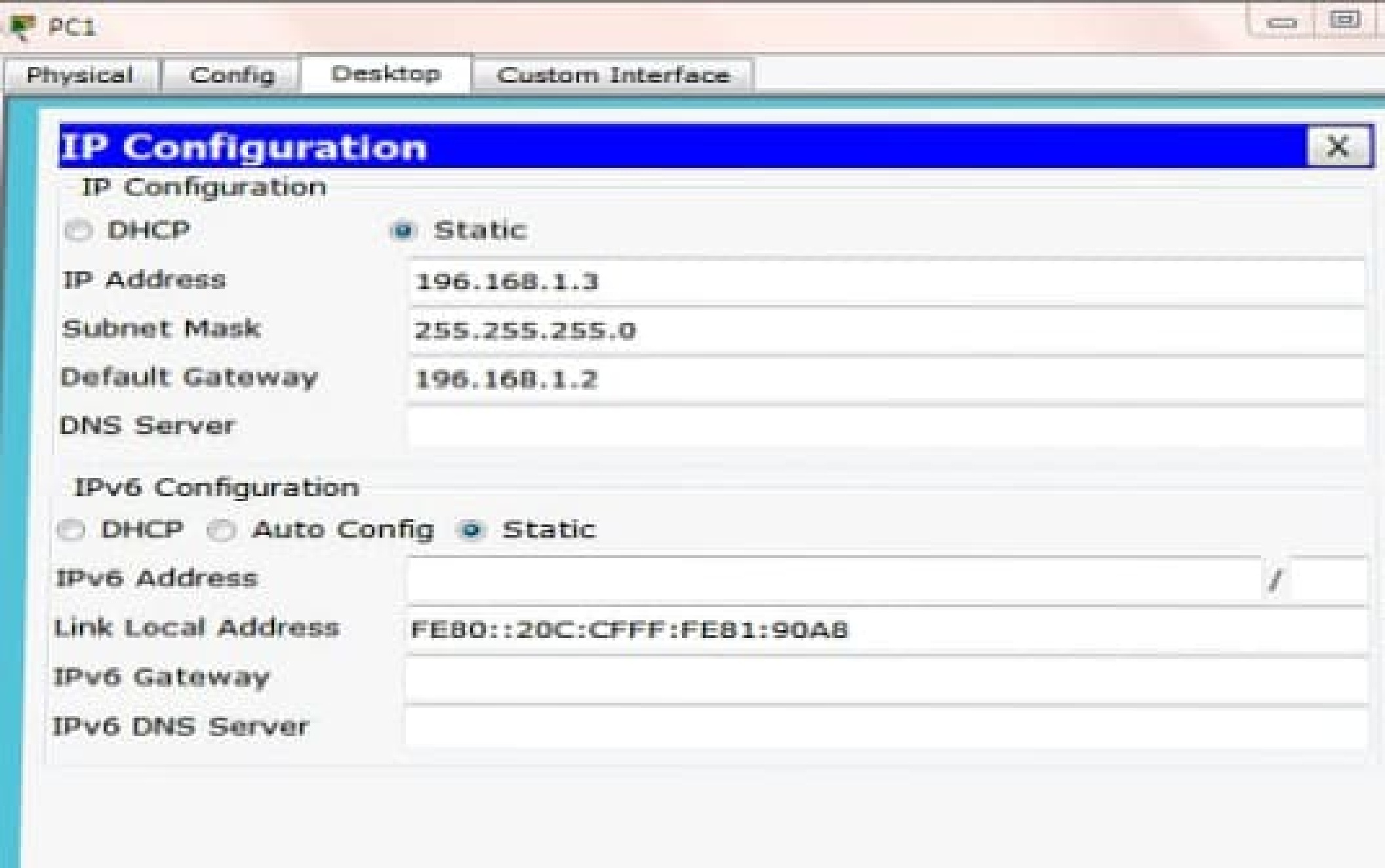
IPv6 Address

Link Local Address

FE80::290:28FF:FE7B:9D5B

IPv6 Gateway

IPv6 DNS Server



IP Configuration

IP Configuration

- DHCP Static

IP Address	196.168.1.3
Subnet Mask	255.255.255.0
Default Gateway	196.168.1.2
DNS Server	

IPv6 Configuration

- DHCP Auto Config Static

IPv6 Address		/	
Link Local Address	FE80::20C:CFFF:FE81:90A8		
IPv6 Gateway			
IPv6 DNS Server			

IOS Command Line Interface

```
--- System Configuration Dialog ---
```

```
Continue with configuration dialog? [yes/no]: n
```

```
Press RETURN to get started!
```

```
Router>en
```

```
Router#config t
```

```
Enter configuration commands, one per line. End with CNTL/Z.
```

```
Router(config)#hostname router
```

```
router(config)#line console 0 4
```

```
-
```

```
% Invalid input detected at '-' marker.
```

```
router(config)#line console 0 4
```

```
-
```

```
% Invalid input detected at '-' marker.
```

```
router(config)#line console 0
```

```
router(config-line)#password cisco
```

```
router(config-line)#login
```

```
router(config-line)#exit
```

```
router(config)#line vty 0 4
```

```
router(config-line)#password cisco
```

```
router(config-line)#login
```

```
router(config-line)#exit
```

Packet Tracer PC Command Line 1.0

PC>ping 192.168.1.1

Pinging 192.168.1.1 with 32 bytes of data:

Reply from 192.168.1.1: bytes=32 time=21ms TTL=255

Reply from 192.168.1.1: bytes=32 time=0ms TTL=255

Reply from 192.168.1.1: bytes=32 time=0ms TTL=255

Reply from 192.168.1.1: bytes=32 time=0ms TTL=255

Ping statistics for 192.168.1.1:

Packets: Sent = 4, Received = 4, Lost = 0 (0% loss),

Approximate round trip times in milli-seconds:

Minimum = 0ms, Maximum = 21ms, Average = 5ms

PC>

IP Configuration



IP Configuration

DHCP

Static

IP Address

192.168.1.4

Subnet Mask

255.255.255.0

Default Gateway

192.168.1.1

DNS Server

IPv6 Configuration

DHCP

Auto Config

Static

IPv6 Address

/

Link Local Address

FE80::205:SEFF:FE92:3780

IPv6 Gateway

IPv6 DNS Server

