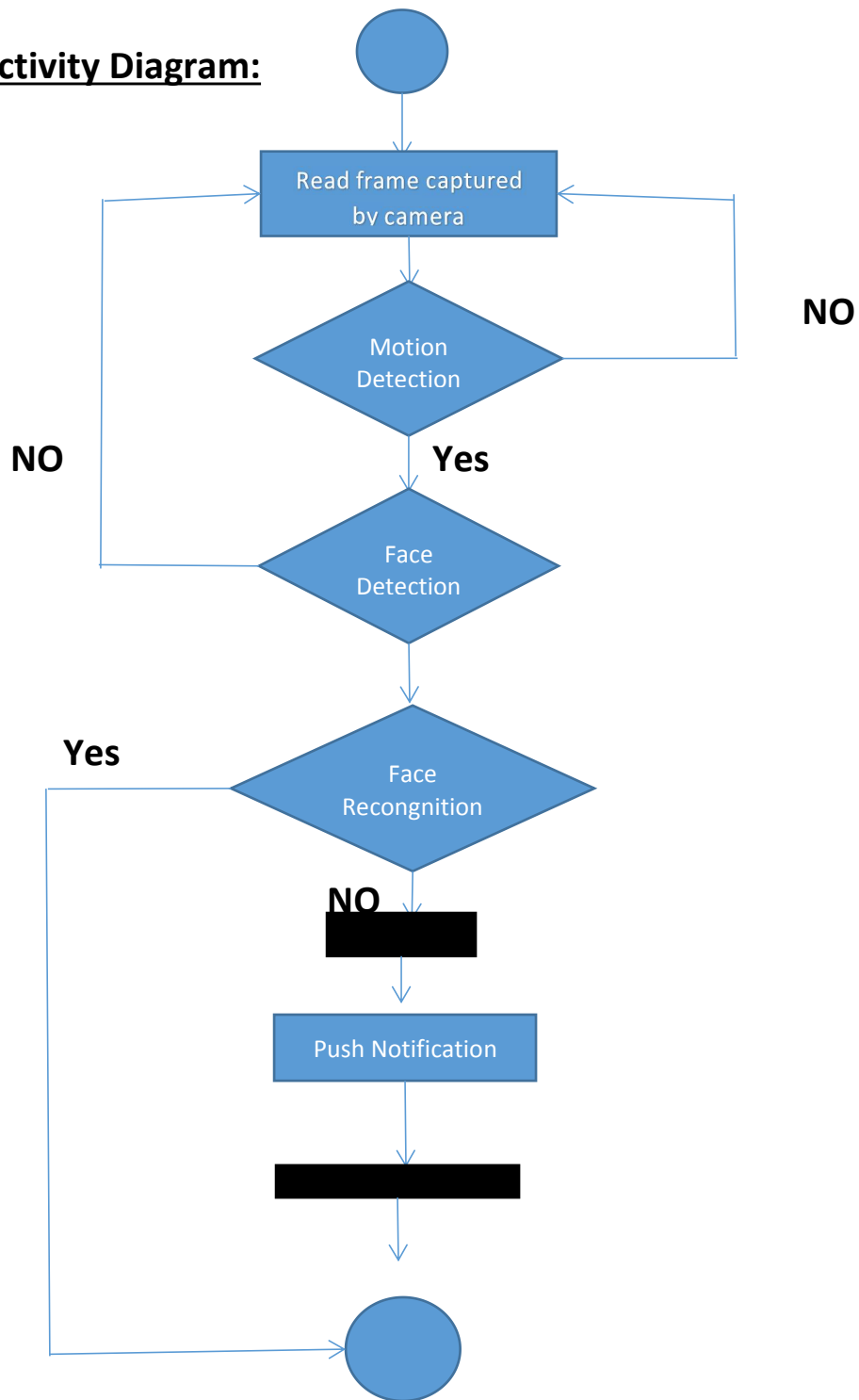


HAMMAD PIR
ID # 6961

Q1: Activity Diagram:



Description:

Motion Detection;

Motion detection is the process of detecting a change in the position of an object relative to its surrounding relative to an object. Motion detection can be achieved by either mechanical or electronic methods.

Face Detection;

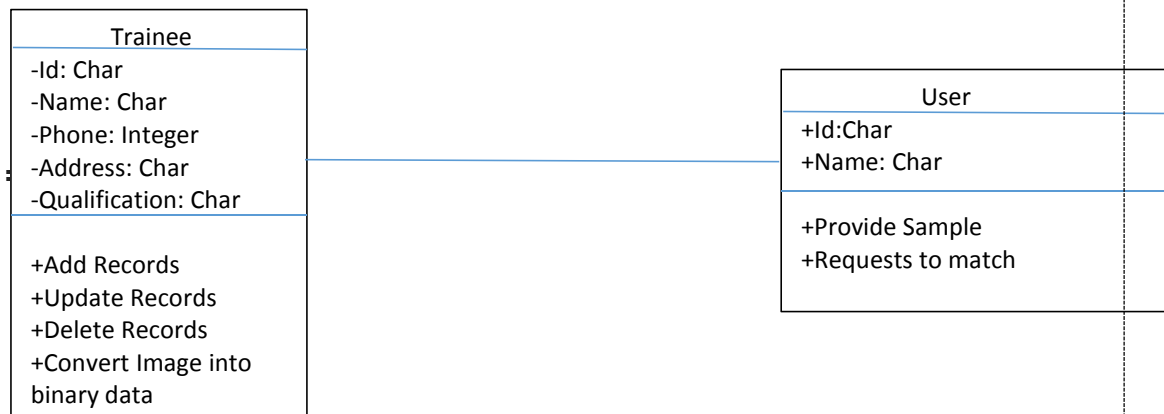
The definition of face detection refers to computer technology that is able to identify the presence of people's faces within digital images. In order to work, face detection applications use machine learning and formulas known as algorithms to detecting human faces within larger images.

Face Recognition;

Face recognition is a method of identifying or verifying the identity of an individual using their face.

Q2: Class diagram:

Face Recognition System Class Diagram

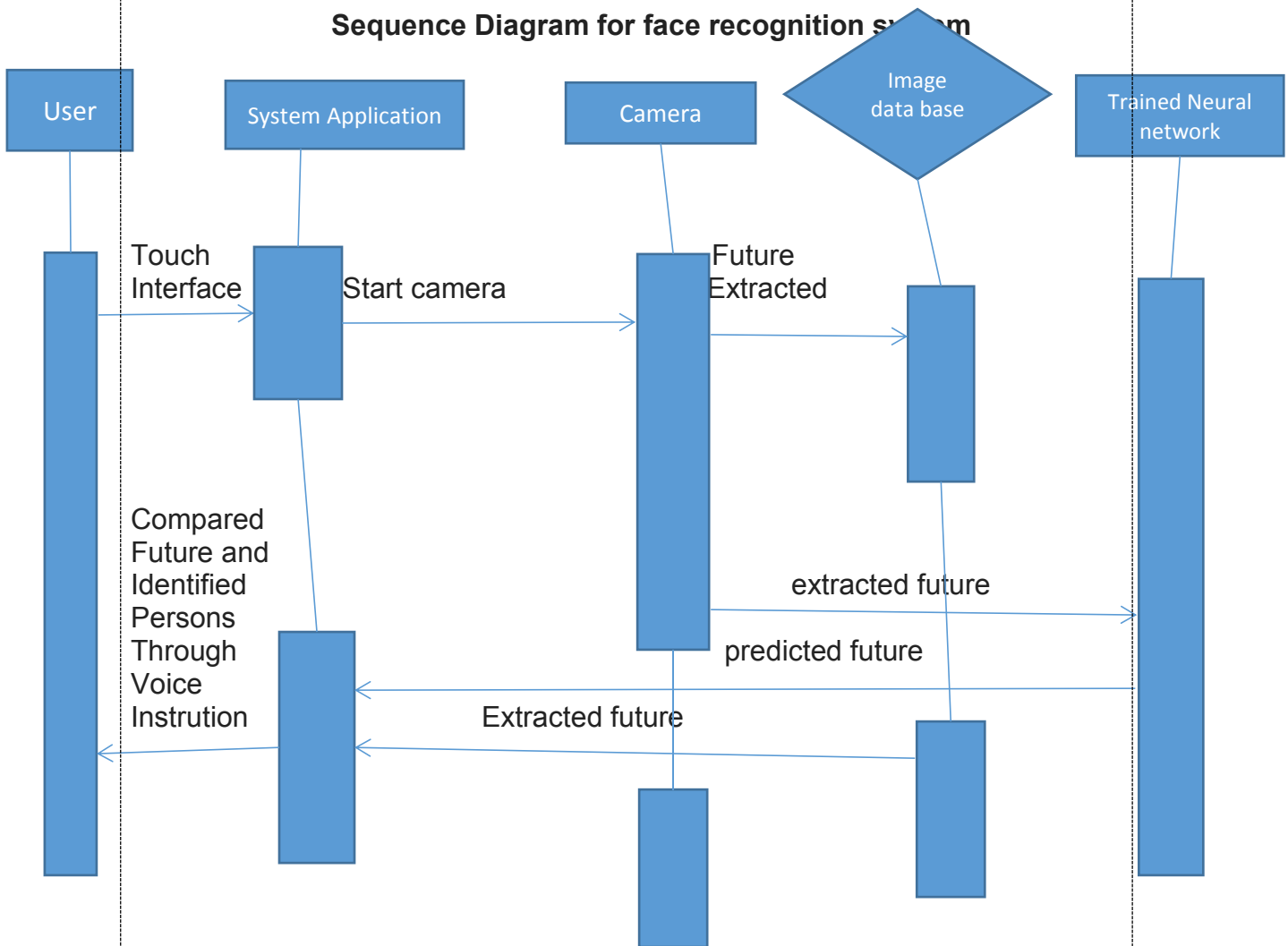


Description:

A class diagram is a type of diagram and part of a unified modeling language (UML) that defines and provides the overview and structure of a system in terms of classes, attributes and methods, and the relationships between different classes.

Q3: Sequence diagram:

Sequence Diagram for face recognition system



Description:

A sequence diagram shows object interactions arranged in time sequence. It depicts the objects and classes involved in the scenario and the sequence of messages exchanged between the objects needed to carry out the functionality of the scenario. Sequence diagrams are sometimes called event diagrams or event scenarios.

Q4: State Chart Diagram :

State Chart Diagram for face recognition system

