

①

Name = Zain-ul-Abideen

I.D = 14713

Programme = Software engineering

Section = B

Course = Data Base.

Module = 4th.

Instructor name = Rimsha Khan.

Q1:- Answer Short questions.

Q1:- Which attribute in the following table is Candidate Key? Assume that no more data will ever be added to this table.

ID	Name	Semester	Department	Cell
1	Sania	1	CS	03334324234
2	Romaisa	1	CS	03335399123
3	Alina	1	CS	03150034224
4	Ayeza	3	CS	03455559822

Ans:- In the above table I.D and Cell are Candidate Key.

I.D

1

2

3

4

Cell

03334324234

03335399123

03150034224

03455559822

(2)

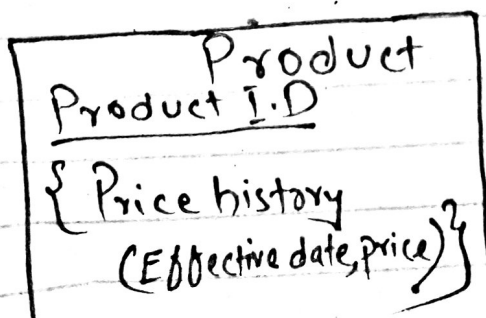
Q2:- What is Data Redundancy and Data integrity?

Ans:- 1) Data Redundancy :- Data redundancy is a condition with in database in which the same piece of data is held in two separate places.

2) Data integrity :- Data integrity refers to the accuracy and consistency of data stored in a database.

3. How multivalued composite attribute is represented in conceptual Model? Show with example.

Ans:- The multivalued composite attribute is represented by enclosing component of composite attribute by paranthesis and writing the whole name of composite attribute outside paranthesis and whole enclosed inside a curly bracket. This entity is written in Square or Rectangular Box. The curly bracket shows multivalued, paranthesis is composite.
For example



(3)

4. How is there reduced maintenance in database approach

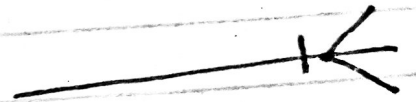
Ans:- Stored data can be changed frequently for variety of reasons, the system will provide modification to a data file without modifying the program and it also provides us way to reduce the maintenance of the program.

Q5:- How are the following represented using ER Diagram. Mandatory one, Mandatory many, optional one, optional many?

Ans:- Mandatory one:-



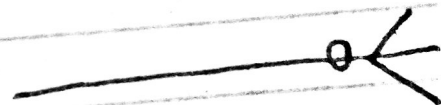
Mandatory many:-



Optional one:-



Optional many:-



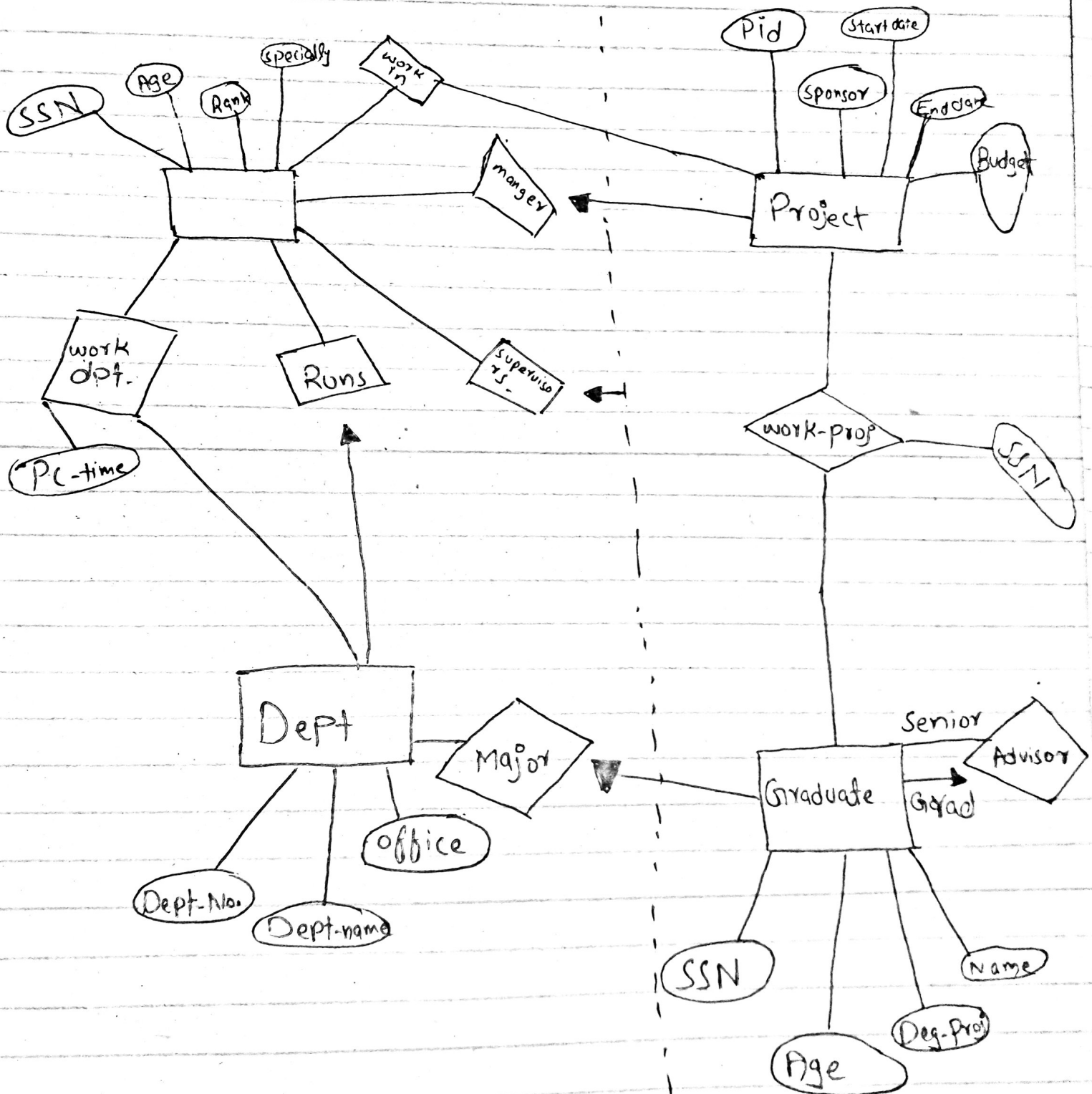
(4)

Q:- why is there an explicit need of back up in database?

Ans :- A shared corporate database must be accurate and available all time. This requires that comprehensive procedure be developed for providing backup copies of data and for restoring database when damage occurs. For this reason, an explicit need of back up in database approach is there.

4

Question 2:- Draw a ERD from the following bussiness rules. Use proper notations for type of attrib^{ut}



Q 3:- Convert following ⁽⁵⁾ Conceptual Model to Relational Model.

Ans:-

