

Name.: Fawad Gul

ID.: 7373

Subj.: Introduction to Architecture & Town Planning.

Submitted to: Miss Aleena babar.



Q1: - Two storied houses (advantage)

A. As someone had mentioned, one of the biggest advantage is of having almost double floor area under same perimeter as with single floor houses.

B. Better temperature regulation & less control of ground floor even if terracing (technical) of first floor has not been done.

C. In an unorganized or unplanned neighbourhood where set backs and heights are not regulated/controlled or in row housing, where houses circling the congested house. have more than one floor then it is a slight advantage to follow a similar pattern adopted

by others. Ventilation and lighting of floors above ground floor will be better.

D. Multi storied houses are known to cater a better Population density. More people on a relative piece of land.

In cities, due to high land cost and rising Population influx, duplex or multi storied buildings are a quick solution.

4. Two storied houses (disadvantage).

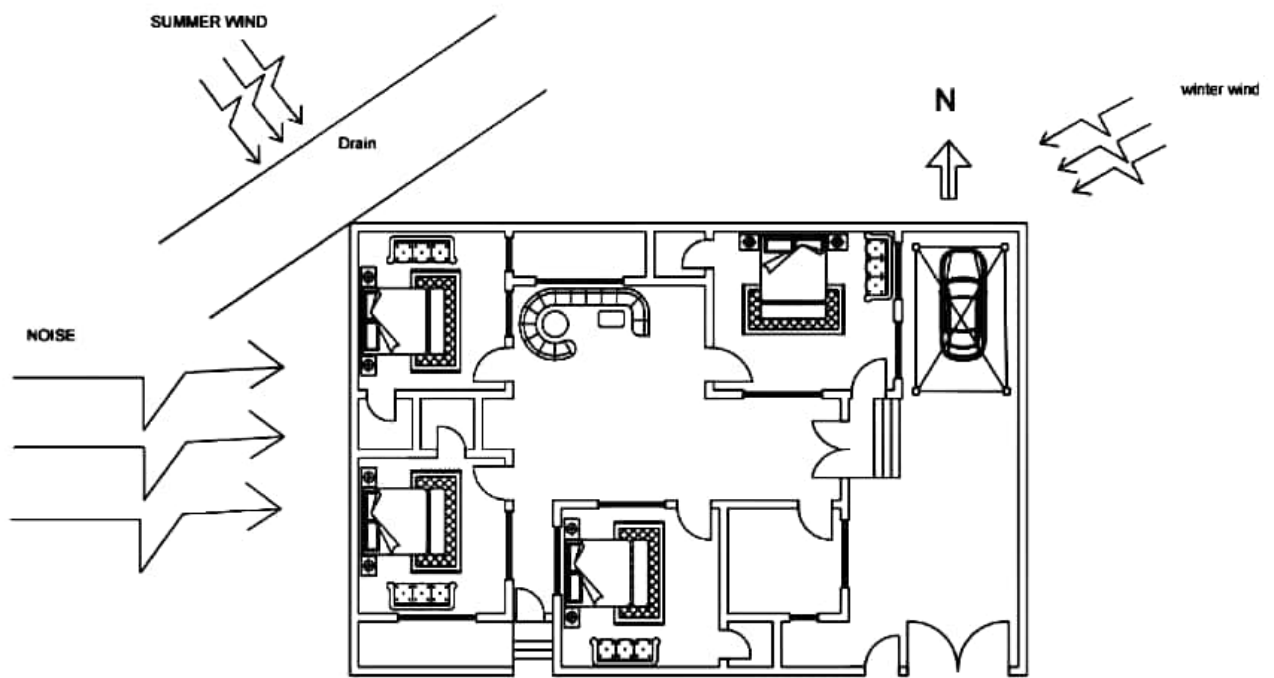
A. It increase the cost of a house as strong foundations, bigger service core and stair case(s) have to be designed. Maintenance cost also rises.

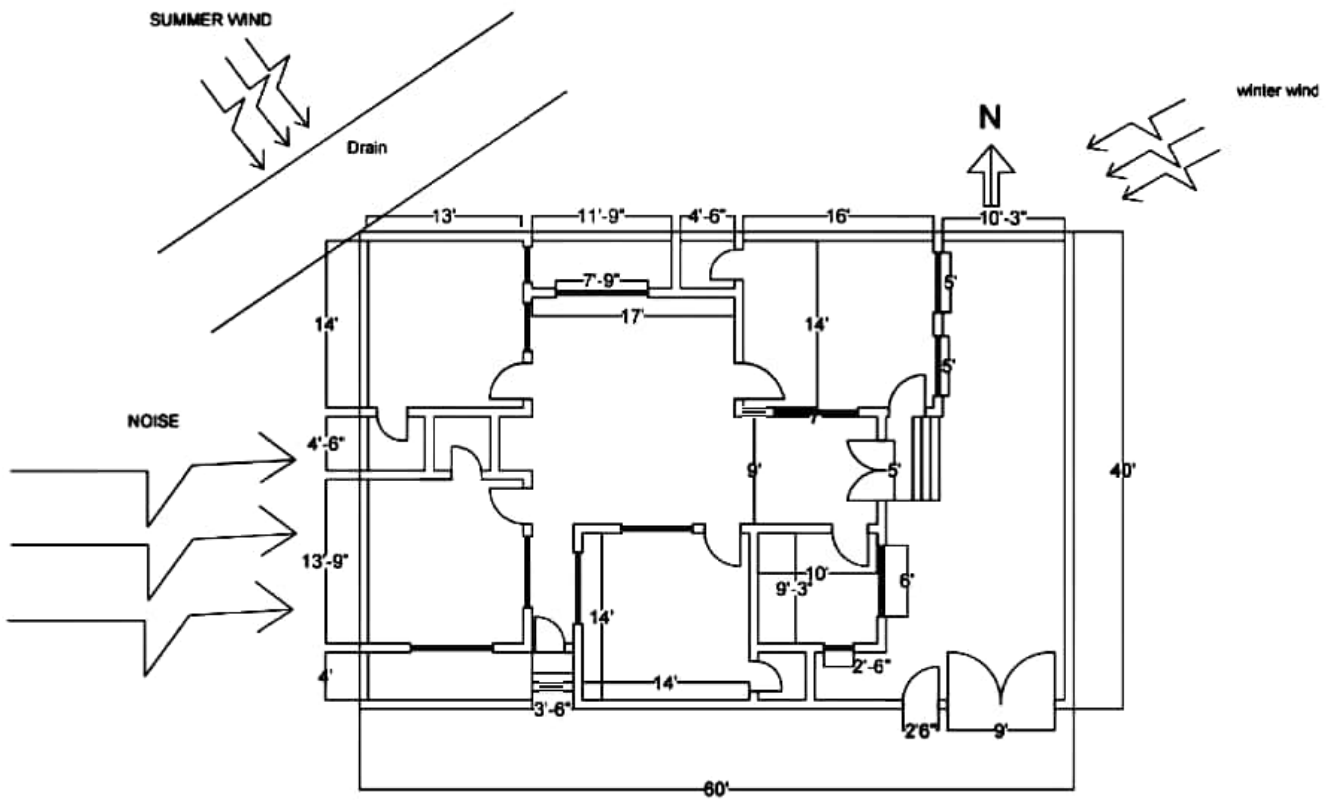
- B. Many a times a compromise on carpet has to be made due to the above. Thus even though a duplex will have double the ground floor area, but a duplex's ground floor will be smaller than a ground floor of a single floor residence on the same plot.
- C. A duplex or even a multistoried house is less human with a single storied house.
- D. A top most story of a multistoried house is the hottest portion in composite climate if terracing (technical) has not been done.

Q2:-

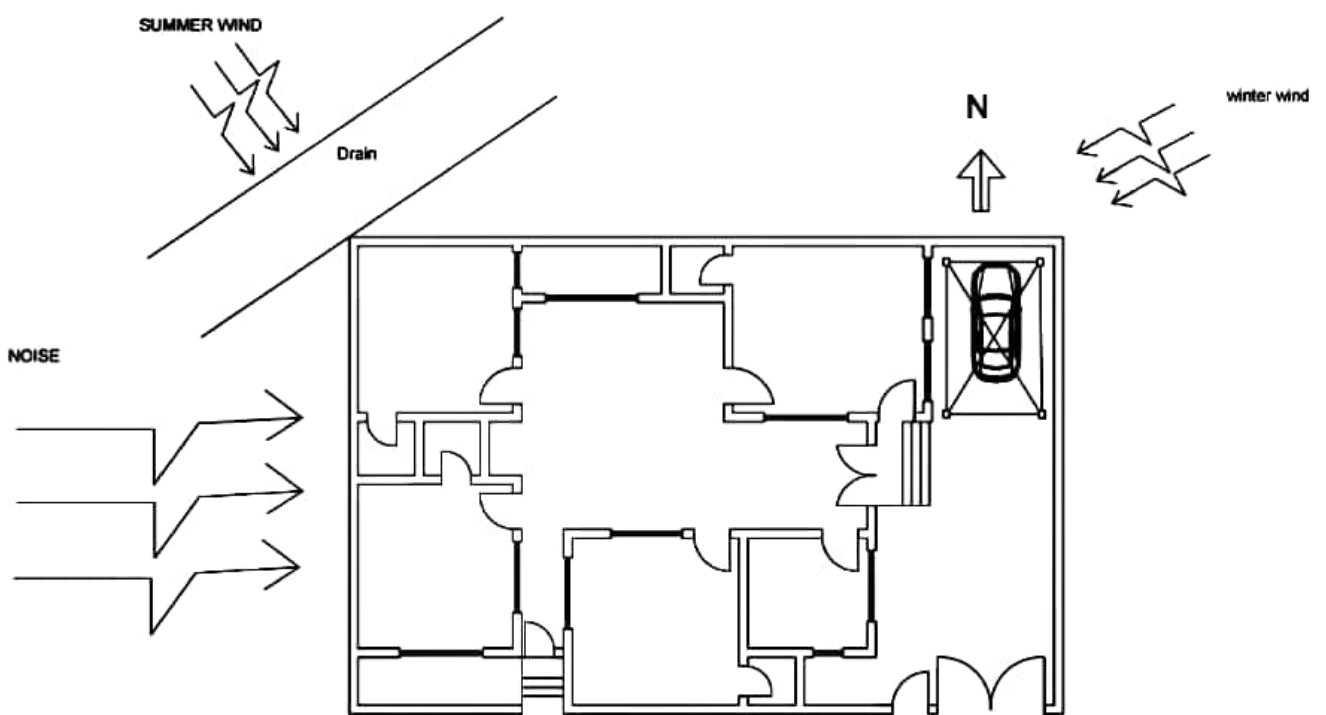
Page # 1

- ①:- The open area is 6' x 40' plot
- ② N5', W, 10', E, 10', S = 10'
- ③:- Boundary wall 4 side height 10', 9'
- ④ Three bedrooms + vent height 10'
- ⑤ Doors front window back
- ⑥ veranda open for ventilation
- ⑦ open Back, small reduce drainage  
Cover, open, pollution, Insect, it disease
- ⑧ winter sun better temperature.  
Present weather
- ⑨ Summer Green shelter are used for blocks  
the sun radiation.
- ⑩ In South two story building the sun  
radiation are blocked.









Q3:- Select the site plan where you live? Do  
micro site analysis ----- sun is blocked

→ Site is located in Peshawar. Garden/lawn is  
considered as a site for micro analysis.

→ Micro analysis consists of following parameters.

#### • SOIL CONDITION-

Soil of site consists of clay strata.  
B.C of such soil is between 0.75TSF-  
1TSF.

#### • HYDROLOGY-

→ The depth of under ground water table is  
below 20'

→ There is no drainage line on four sides  
of site.

#### • VEGETATION-

→ Size of site is approximate 25'x15'

→ Trees are present in site.

→ Site is aesthetically acceptable.





