

Department of Electrical Engineering
Sessional Assignment
Course Details

Course Title: Instrumentation and Measurement **Module:** 6th (BE)

Student Details

Name: _____ **Student ID:** _____

Q1: A wattmeter has 2 current coils connected in parallel, each having a resistance of 0.7Ω . The wattmeter is connected in a circuit to measure power with its potential coil on the supply side. The reading on the wattmeter is 100W and the reading on the ammeter connected in series with the current coil is 3A. Calculate:

- a) Power loss in the wattmeter
 - b) True load power
 - c) Percentage error due to wattmeter connection
-

Q2: Two voltmeters have the same range 0-500V. The internal resistances are $30K\Omega$ and $20K\Omega$ respectively. If they are connected in series and 700V be applied across them, what will be their readings?

①

Name : Fayaz ullah
ID : 13854
Subject : EMI (Assignment)

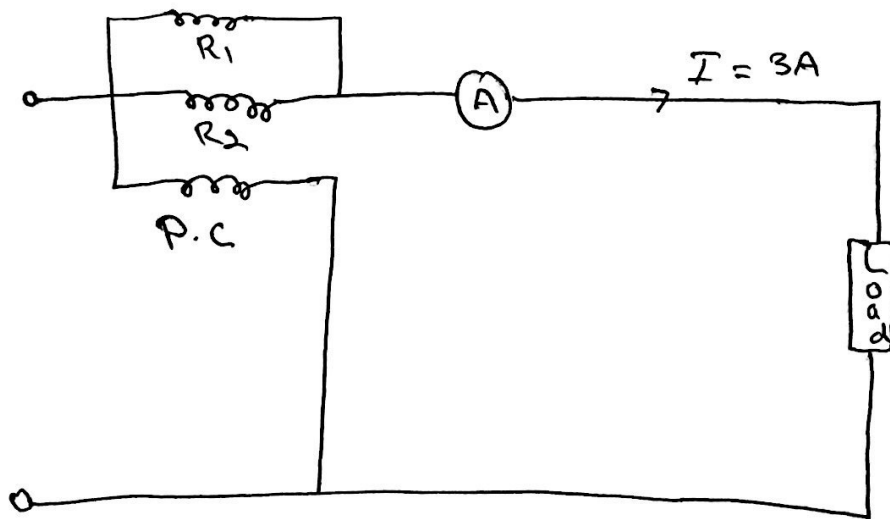
Question 1
~~1/1/2021~~

Given Data:

2 current coils = $R_1 = 0.7 \Omega$
connected in parallel = $R_2 = 0.7 \Omega$
current = 3A
wattmeter = $P = 100W$

Required = ?

(a): Power loss in wattmeter ?



(2)

Effective resistance of
current coils

$$R_c = \frac{R_1 R_2}{R_1 + R_2}$$
$$= \frac{0.7 \times 0.7}{0.7 + 0.7} = \boxed{0.35 \Omega}$$

Power loss in wattmeter

$$= I^2 R_c$$

$$= 3^2 (0.35)$$

$$= \boxed{3.15 \text{ W}}$$

(b): True load power ?

$$\text{True load power} = 100 - 3.15$$

$$= \boxed{96.85 \text{ W}}$$

(c): Percentage error?

$$\% \text{ error} = \frac{100 - 96.85}{96.85} \times 100$$

$$= \boxed{3.25 \%}$$

Question No 2

Given data:

$R_1 = 30\text{ k}\Omega$

$R_2 = 20\text{ k}\Omega$

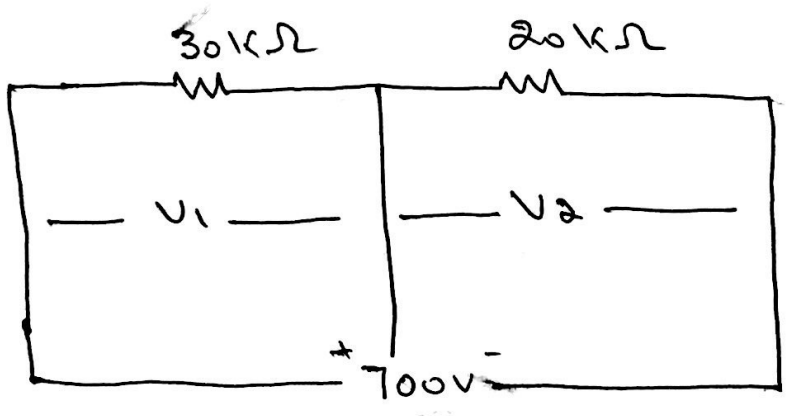
Voltage = $V = 0 - 500\text{ V}$

$V_T = 700\text{ V}$

Required:

$V_1 = ?$

$V_2 = ?$



VDR, the voltage will be

$$V_1 = \frac{30\text{ k}\Omega}{30\text{ k}\Omega + 20\text{ k}\Omega} \times 700 = 420\text{ V}$$

$$V_2 = \frac{20\text{ k}\Omega}{30\text{ k}\Omega + 20\text{ k}\Omega} \times 700 = 280\text{ V}$$