

keep in touch

... an inspirational working space



16.



15.

14.



1.

Future working residential spaces will mean that tactile materials will become more important in our creative process, as we will be constantly surrounded by glass and technology.

This working space for artists and designers will demonstrate how our inspiration will not only depend on beautiful images, but also depend on materials chosen by other artists and designers to spark inspiration. These materials will be invitingly presented in recycled drawers in a custom built cabinet.

The entrance will awaken our senses for inspiration. The geodesic style ceiling will be the focal point for those who are sufficiently inquisitive to notice.

Low chairs and tables have been banned from the working space with a view to restore health and encourage mobility.

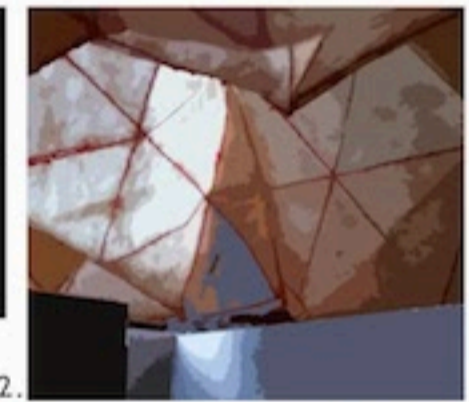
To nurture constant inspiration, lightboxes representing the segmented screen of tomorrow, display images of the 4 elements together with various textures.

The beanbag is also a symbol, that future work spaces will be multi purpose, highlighting inspiration and creativity to be the basics for human survival and evolving to become the most important space in our residence.

The interactive wall provides the opportunity to 'give and receive' input for ideas, highlighting the evolution of future method of cooperation in the formulation and implementation of concepts.



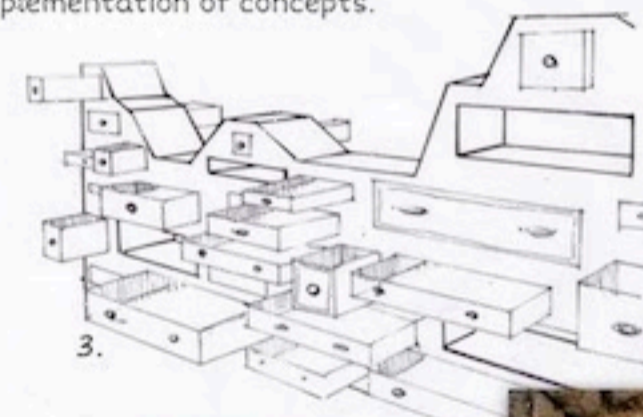
13.



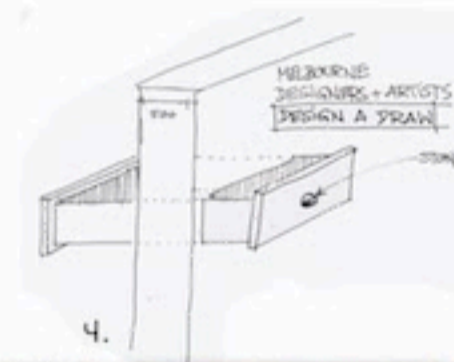
12.



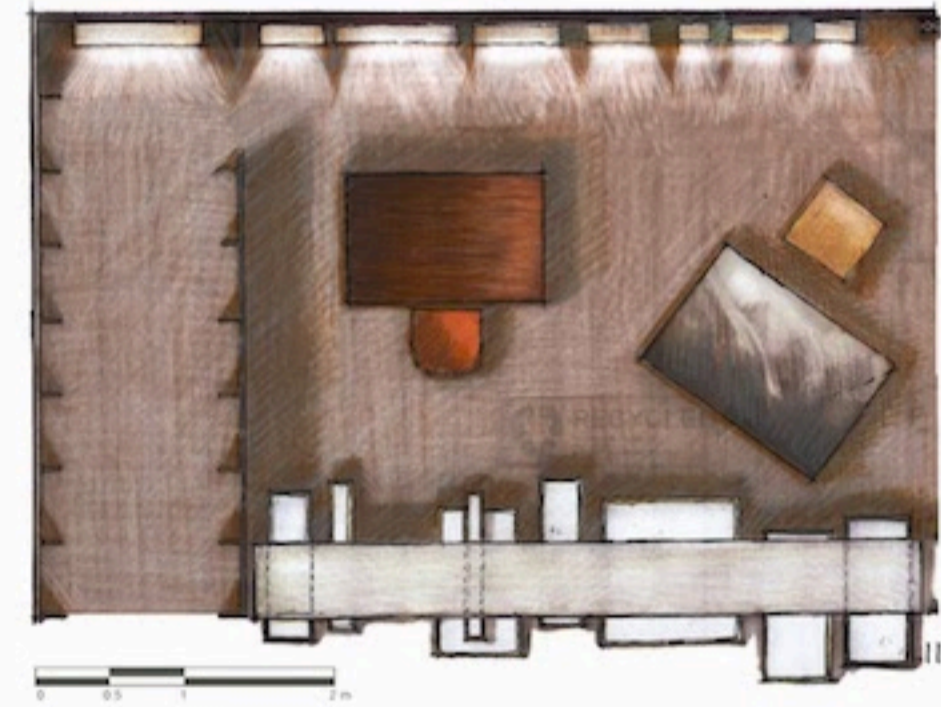
2.



3.



4.



11.



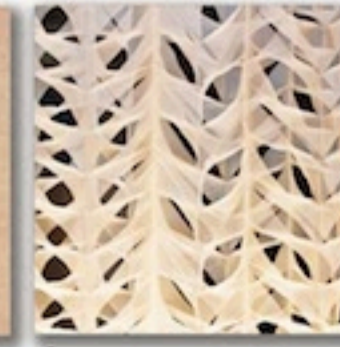
5.



6.



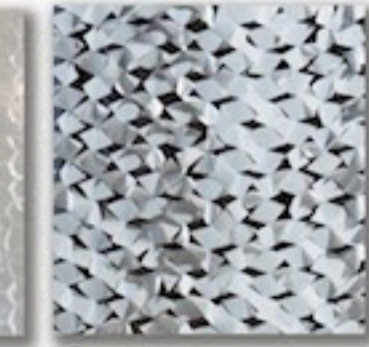
7.



8.



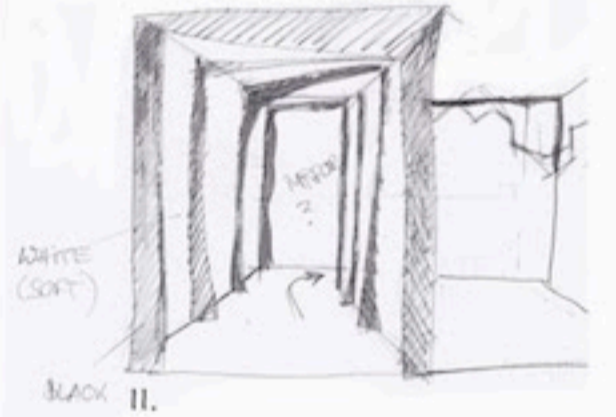
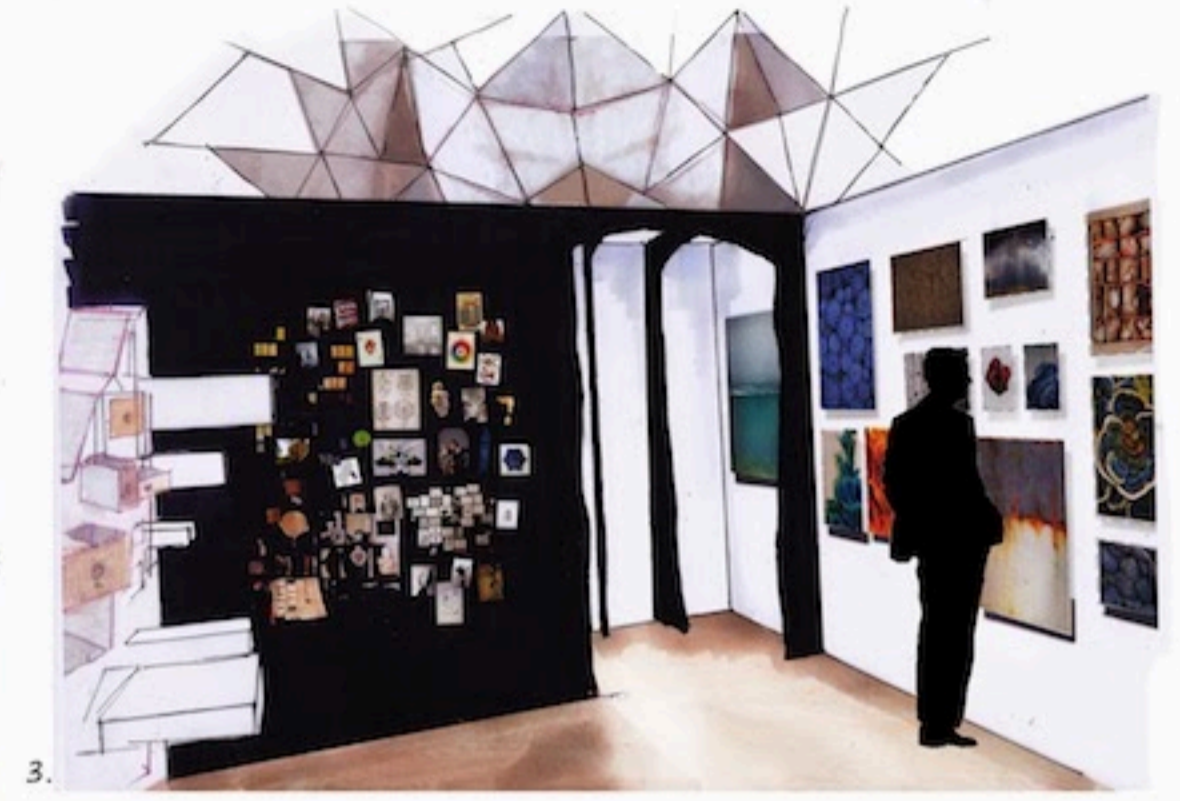
9.



10.

keep in touch

.... an inspirational working space



1. Model view 2. North elevation 3. Perspective 4. Antique Drafting table by Cote 5. Copper Reall Good Counterstool by Bludot 6. Custom made rust pendant 7. Custom made Lightboxes 8. Hog bristle white Dulux 9. Domino blackDulux 10. Inspiration: Poster of 'The Cabinet of Dr. Caligari' 11. Sketch of the entrance 12. West elevation





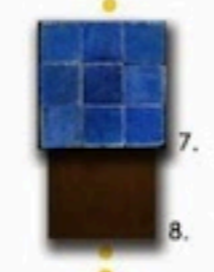
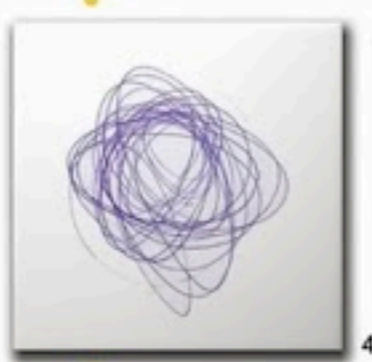
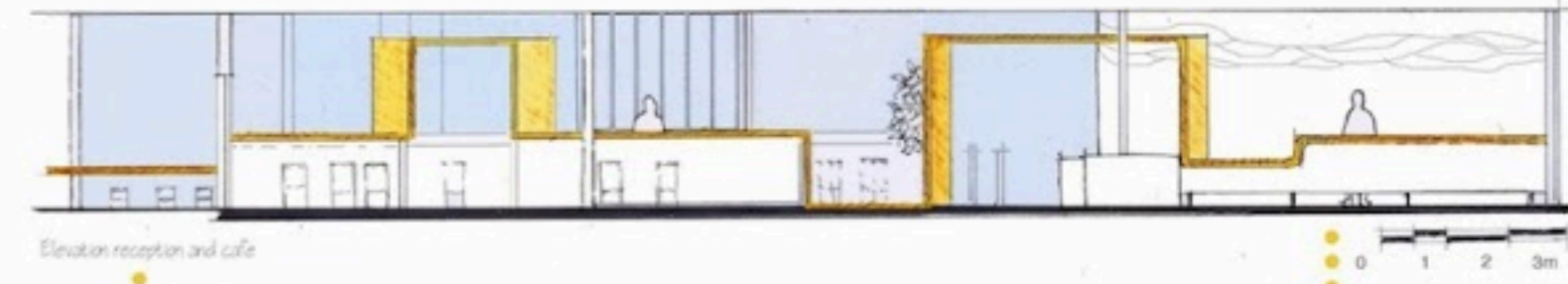
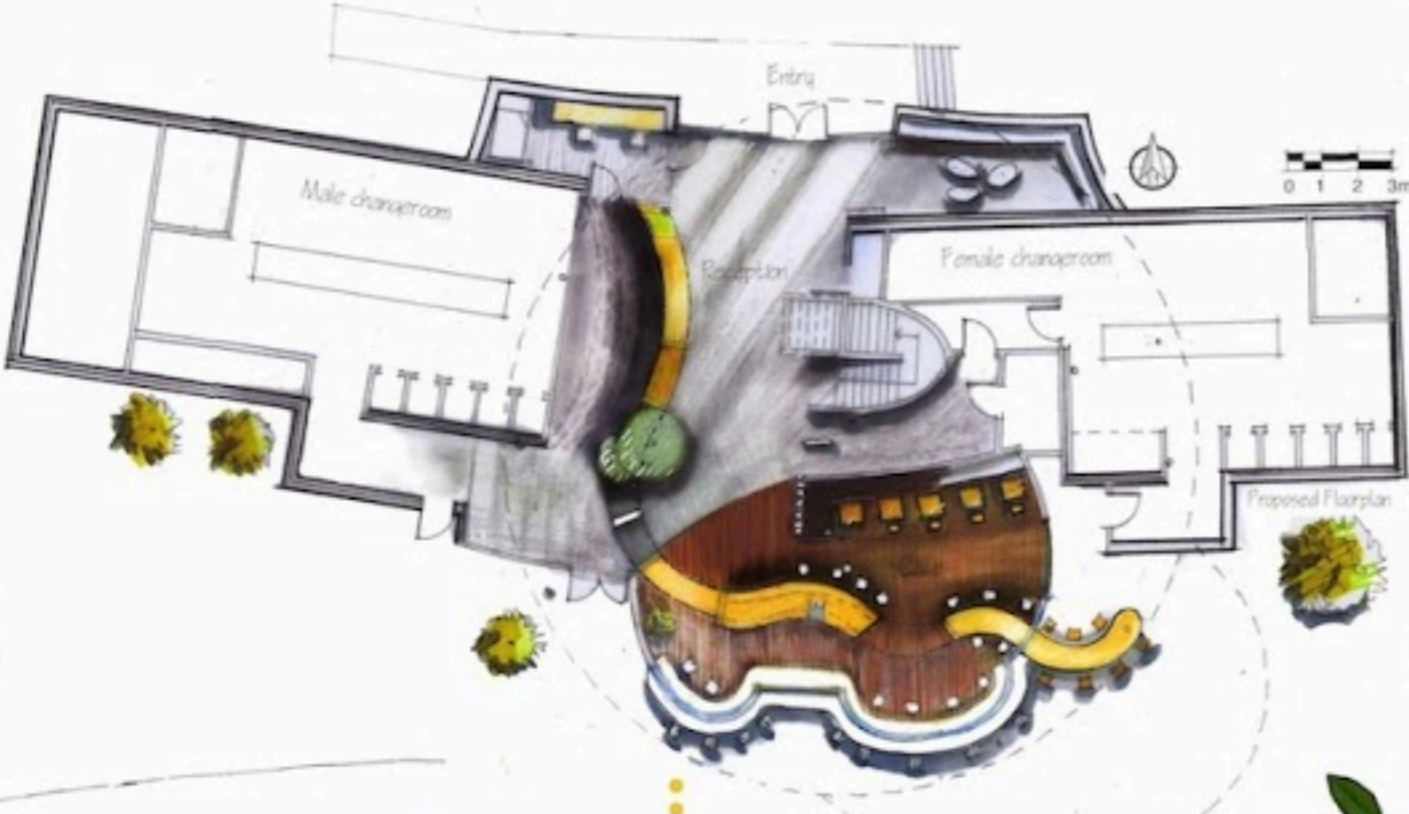
Walking the streets of Fitzroy shows the creative side of Melbourne where graffiti demonstrates the layers of thought.

In contrast, diving into the pool clears the cluttered mind, the bubbles dissolving towards the surface of the water. The bubbles form the word 'water' in many languages and is integrated in the lit reception front panel. A similar idea is created with the corten exterior shaded area, where the cutout words will be seen as 'light words' on the ground.

Another strong inspiration has been the powerful community feel of Fitzroy, highlighted in the protest action in 1993 when the pool was destined to be closed. The community demonstrated using a yellow ribbon as a symbol. The yellow ribbon idea will be incorporated into the marine plywood reception-bar winding throughout the venue.

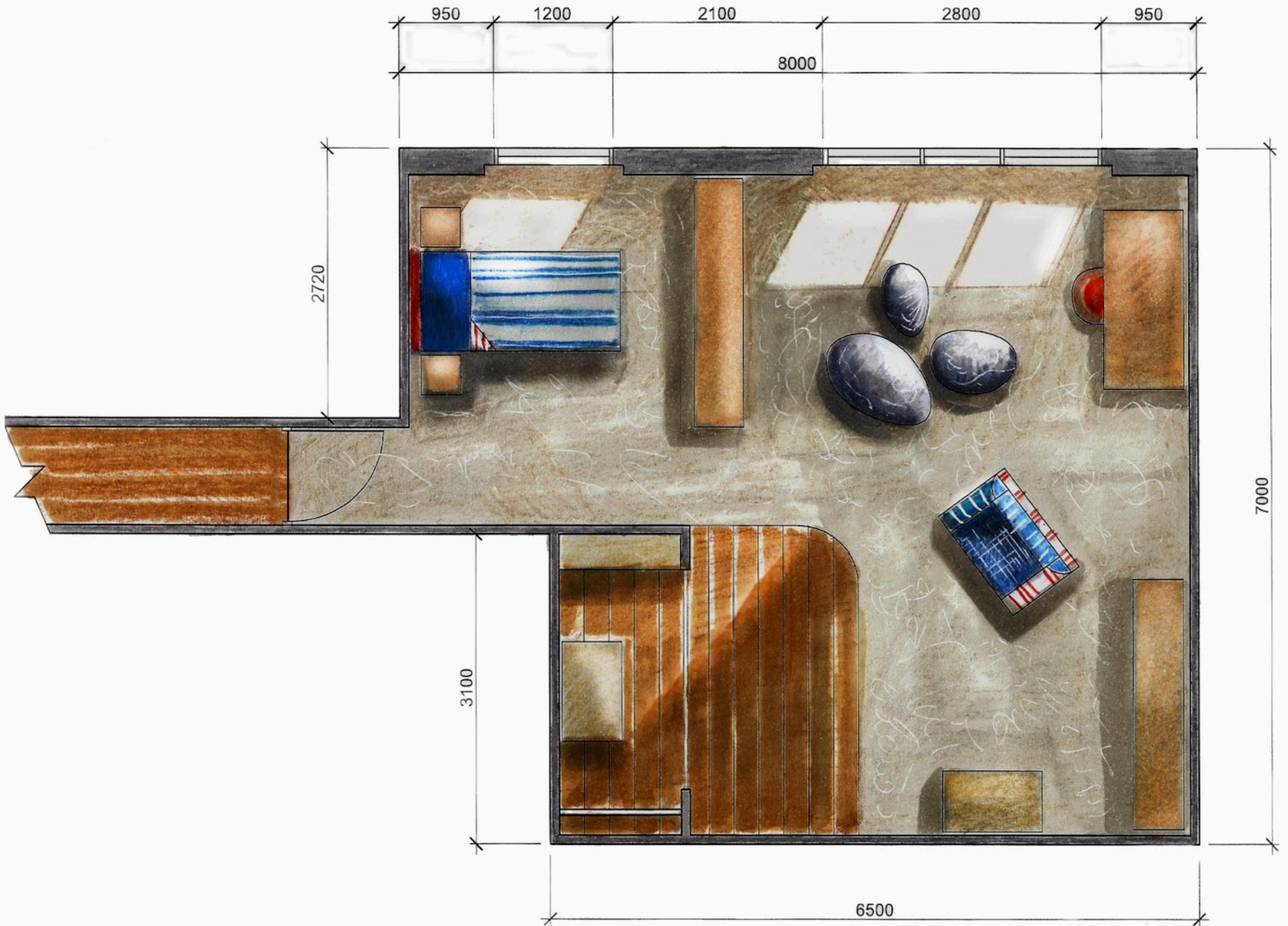
The main materials - corten, concrete and plywood were selected because they are representative of the 'Fitzroy feel'. The wall in the cafe area shows a mixture of different tiles as a symbol of the different cultures of the area, and including bespoke tiles that will look like ball point pen drawings, a reflection of Fitzroy's graffiti.

Another strong element are the lemon trees highlighting the mediterranean immigrant history of Fitzroy, again accentuating the yellow of the ribbon.



- 1. Mixed tiles on wall in cafe
- 2. Yellow Knot Pendant lights in cafe
- 3. Polished floor in reception area
- 4. Bespoke tiles on wall in cafe
- 5. Tolix chair in cafe
- 6. Corten for bar panel, shade and bulkhead on reception
- 7. Mosaic tiles for cafe mixed tiles wall
- 8. Leather for banquette in cafe
- 9. Accessories in cafe
- 10. Stools for bar and outside
- 11. Corten shade
- 12. Plywood for reception and bar ribbon and bulkhead in cafe

X clear your mind...







MOROCCAN SENSES



1.



2.



3.



4.



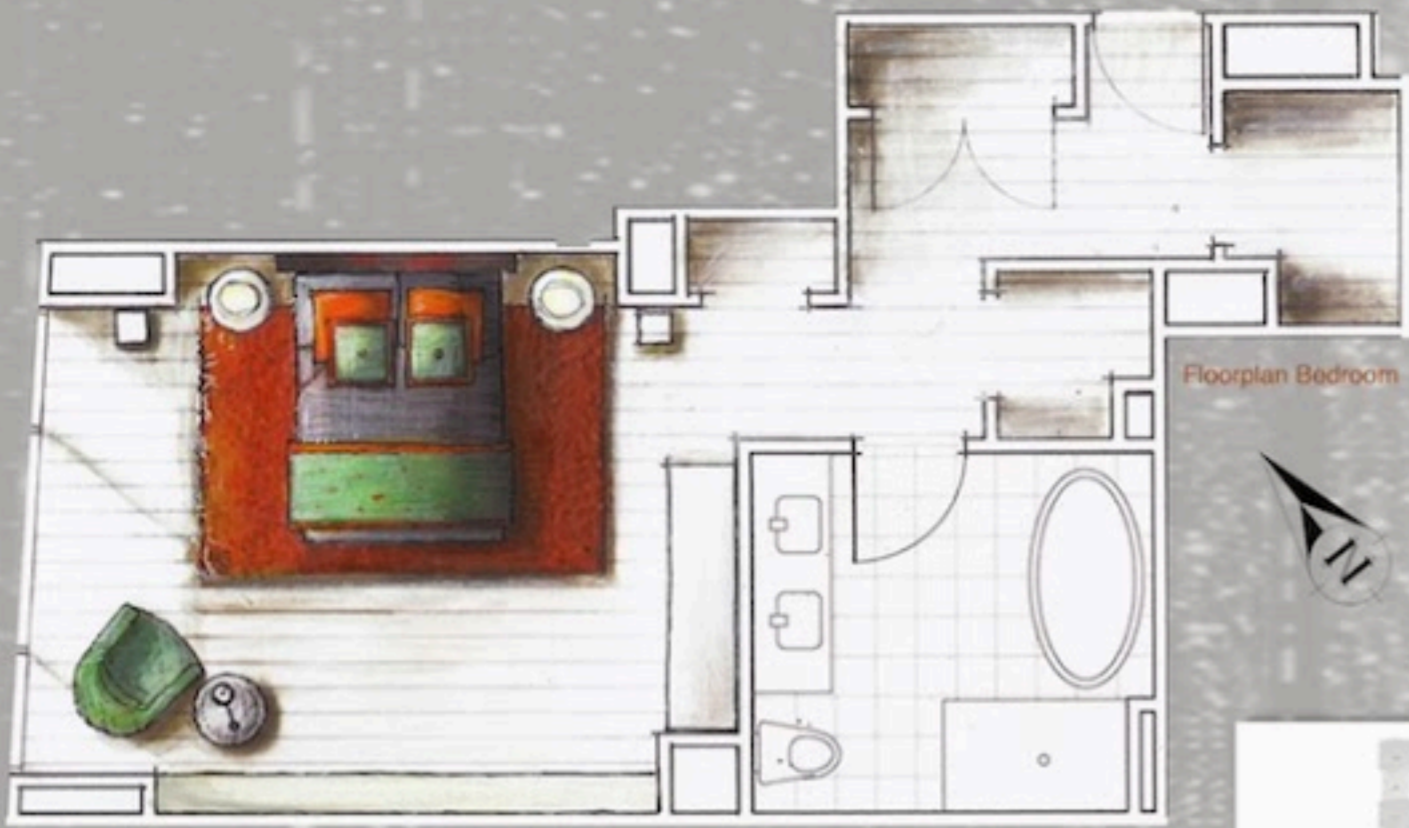
5.

1. Hand painted Bias Armchair, *Anthropologie*
2. Handmade vases, *Erna Aaltonen*
3. Soraya Stone Side Table, *Coco Republic*
4. Coco Fish Scale Pendant, *HH Collection*
5. Original art work, *Michèle Meister*

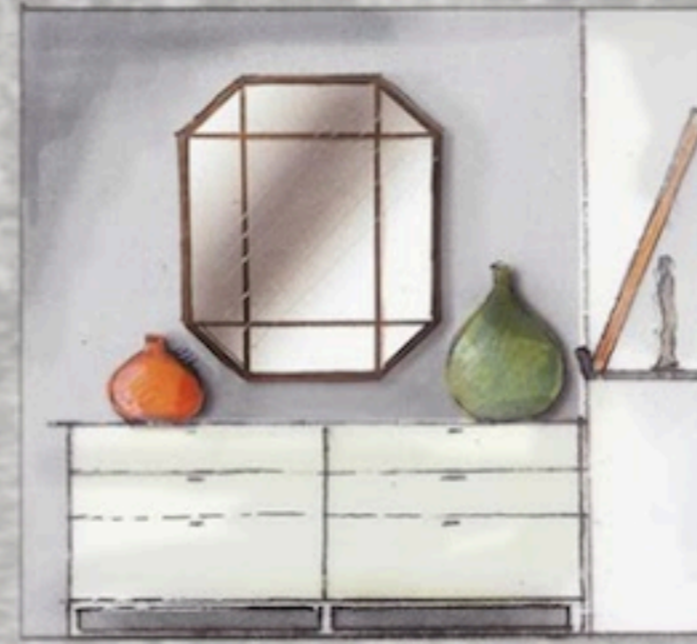
FIRST
LEARN
THE
RULES
xxx
THEN
BREAK
THEM

As a typical Moroccan architecture feature, the room has a lot of character that has been emphasized by using a strong focal point, the hand painted Bias Armchair. The Gold reflects the Moroccan use of honeyed yellows, to be seen in the amazing Mosques of Morocco. The blue colour of the washed wall forms a rich contrast to the gold to create atmosphere and interest. The soft rendering of the room has a welcoming feel, which requires natural and organic materials. The use of handmade accessories and furniture where possible, like the vases and side table, to represent the Moroccan earthy style. The ornaments of the light repeat the design of the table and tiles, displaying contrasting patterns, a typical Moroccan style element. The art work chosen complements the colours scheme. The dotted pattern of the womens' dresses will be replicated by the light of the chandelier at night and complete the interiors feel.





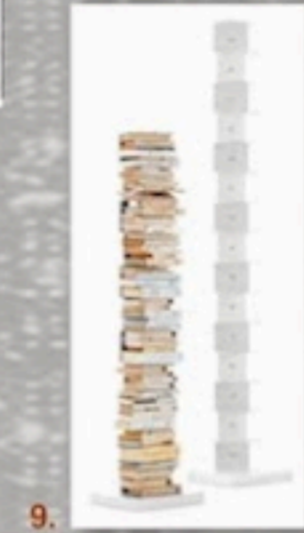
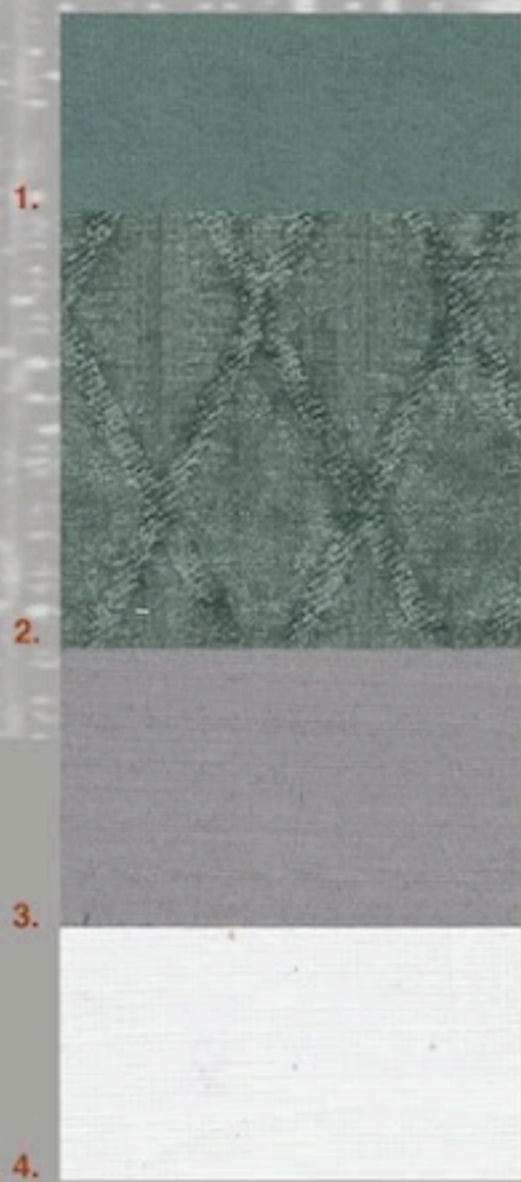
Floorplan Bedroom



East Elevation Bedroom



Perspective Bedroom



9.



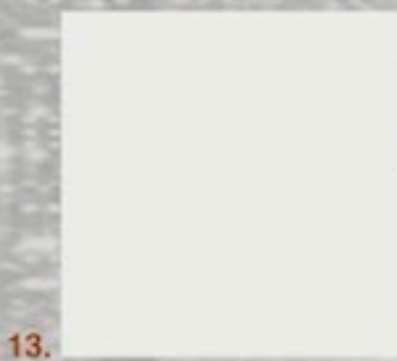
10.



11.



12.



13.



14.



15.



South Elevation Bedroom



16.



17.



18.



19.



20.



21.



22.

In this contemporary bedroom, a balance between urban living and warm desert colours has been created. The colour palette combines the grey of the city and uses this colour to accentuate the colour orange, paired with natural whites and aqua green. The lime washed floorboards allows the bedroom, facing west, to be filled with light. The shell with lip facilitates the easy changing of displayed art and collected accessories. The casual book storage creates fun and introduces a sculptural element. The luxury of this room will be the personal relationship between the owners and their collected artifacts, representing their past and combined with a breathtaking view over Melbourne's roofscape.

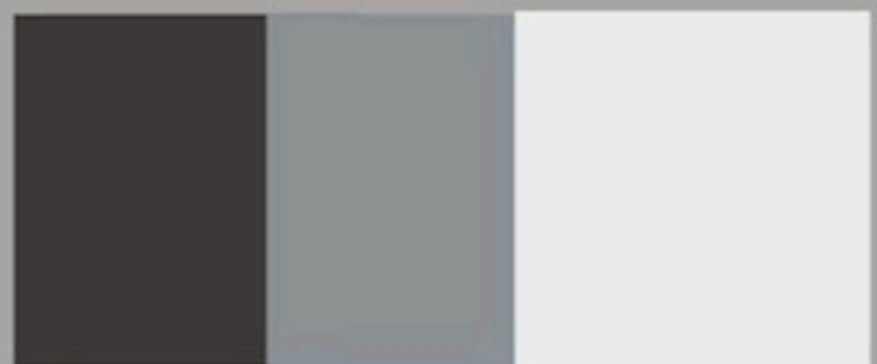
M 33 - Skyline

1. Velvet for throw and cushions by Zepel 2. Fabric for Arana chair Jardan 3. Fabric for Ripple fold curtains by Zepel 4. Fabric for soft roman blinds by Zepel 5. Fabric for quilt cover by Zepel 6. Fabric for valance and pillows by Zepel 7. Fabric for cushions, contrasting bands and piping by Zepel 8. Fabric for bedhead by Zepel 9. Bookshelf Ptolemeo by Space 10. +11. Decorative bottles by Meizai 12. Side table Ray by Coco Republic 13. Copper Wallpaper by Art and Interiors 14. Fabric for Sofa by Marco 15. Velvet for cushions by Zepel 16. Fabric for cushions by Mokum 17. Hexagon Mirror by Meizai 18. Fork Table Lamps by Space Furniture 19. Colour Domino by Dulux 20. Pendant HOLO light by About Space 21. Hammered bowl by Meizai 22. Painting 'mare, cielo, sabbia' by Michèle Meister





Perspective Dining and Living Room



10. 11. 12.

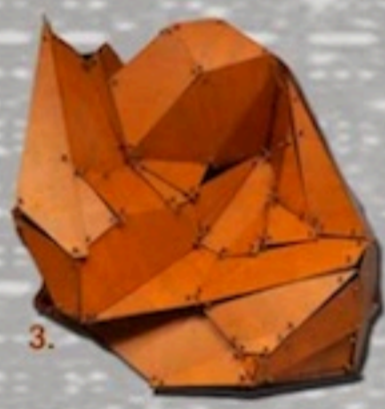
This apartment provides a juxtaposition between simplicity and luxury through quality in materials and design. The inspiration was in the aging of metals... into rust or verdigris, providing a beautiful colour palette. Metals have been introduced into the design through the wallpaper, the Corten Kitchen island and the golden side table in the library. The sheers will provide minimum interruption of the spectacular view and still offer privacy. The living area has been divided into a sitting area, a formal dining area and also a more private area for casual meals with a smaller table. The privacy will continue in the library where a cosy spot for two people has been created to enjoy a movie or music in a dark room with a black wall that will accentuate the wonderful black and white ballet photography collection.



1.



2.



3.



4.



5.



Elevation Foyer



7.



8.



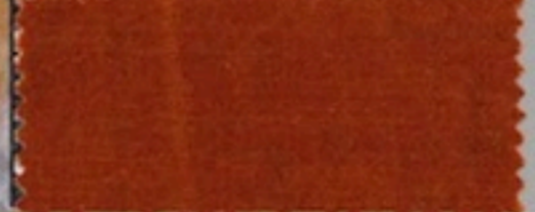
9.



13.



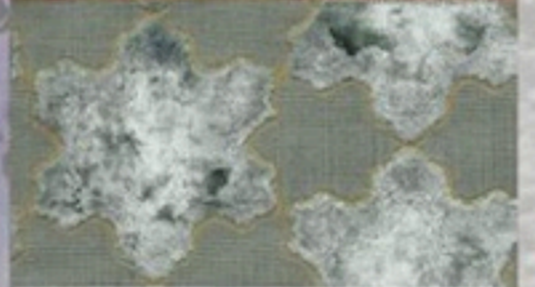
14.



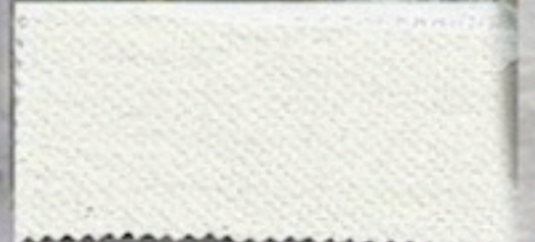
15.



16.



17.



18.



19.



21.



22.



23.



Perspective Library



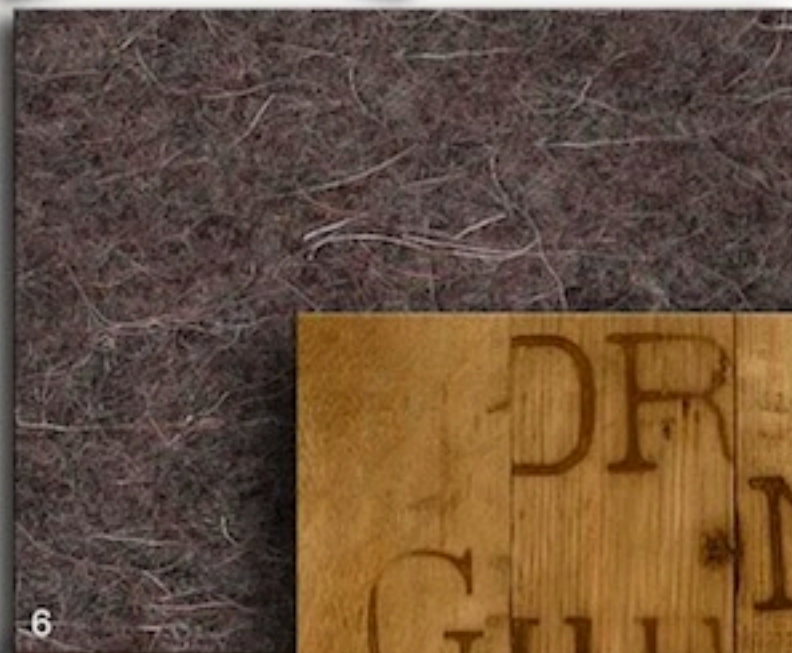
Floorplan

M 33 - Skyline

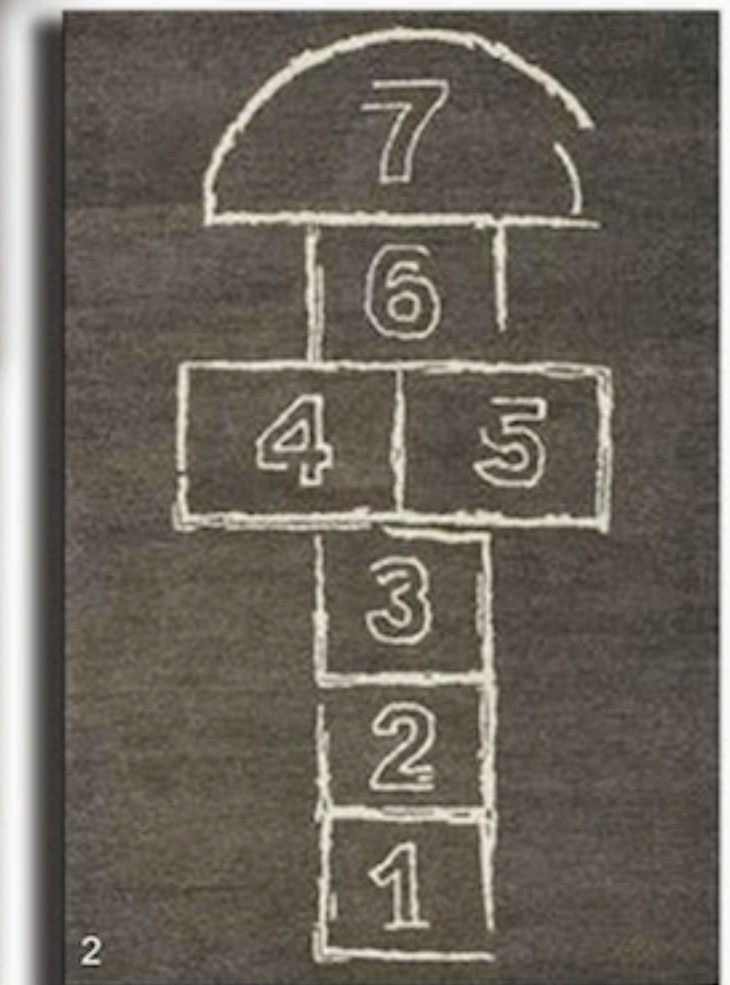
1. Painting 'Cafe' by Michèle Meister 2. Tube Lampshades by Bholou 3. Artwork by Gregory J. Whyte 4. Lampshade Bascetta Star by Michèle Meister 5. Rug by Bholou
 6. Artwork by Artist M I S O 7. Sideboard by John and Coby 8. Painting 'Copper Rider' by Michèle Meister 9. Woodfloor by Mafi 10. Colour Domino by Dulux
 11. Colour Dialogue by Dulux 12. Colour Pepium Quarter by Dulux 13. Copper Wallpaper by Art and Interiors 14. Fabric for Sofa by Marco 15. Velvet for cushions by Zepel
 21. Cumulus Pendant by Enoki 22. Nugget Stool by Coco Republic 23. Luc Archambault 'La Dormiton d'Ophèbe', owners collection.



naturalis



- 1 Bentwood Chair
- 2 Hopscotch Rug
- 3 Rendered wall
- 4 Rust
- 5 Keetsa barrel floor
- 6 Felt by Modenus
- 7 Bholu cushion

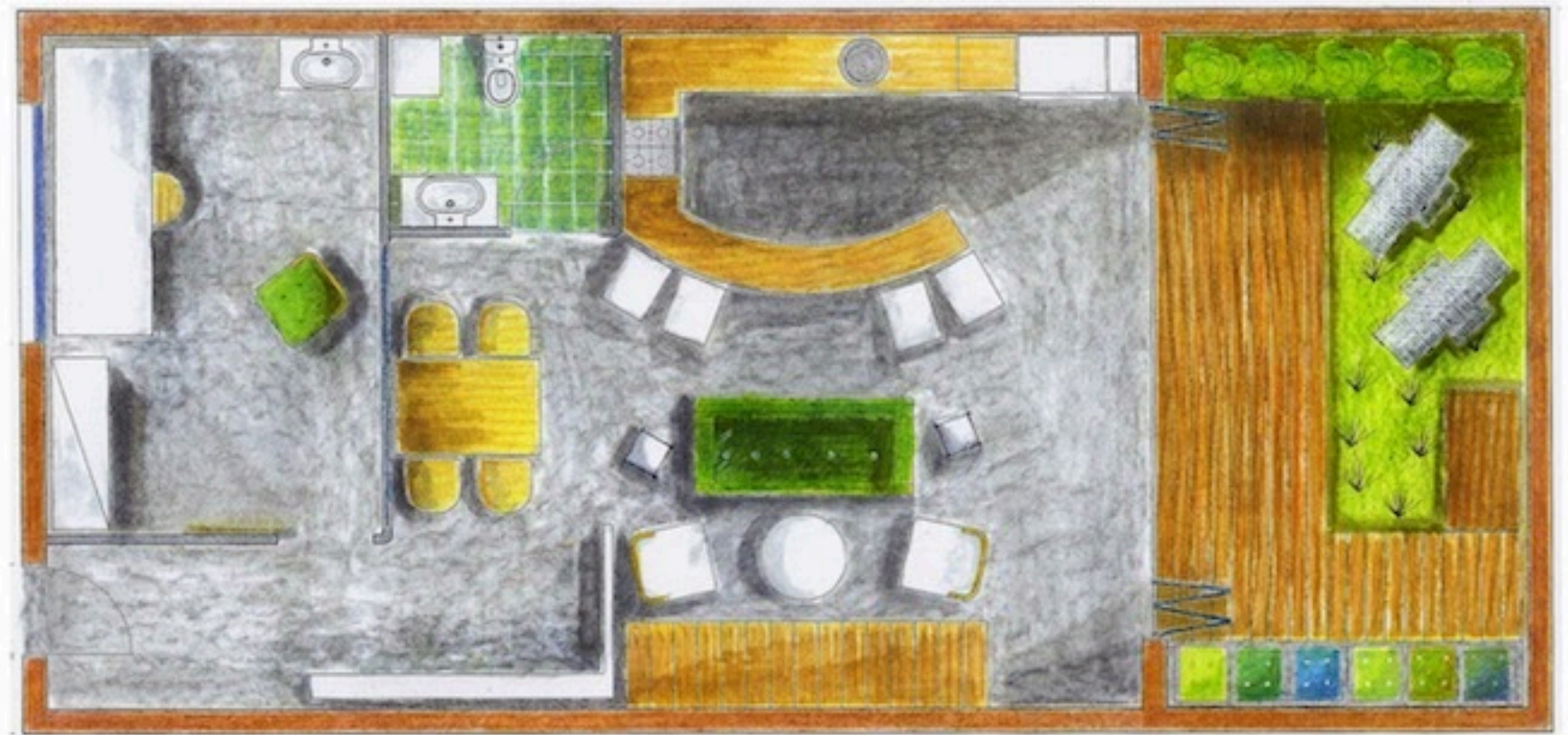
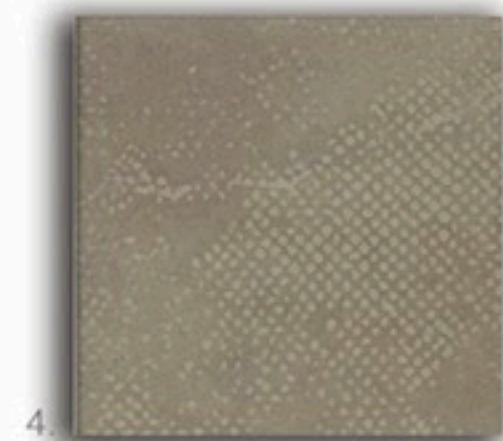


naturalis

A contemporary interior surrounded by nature and natural materials to allow creativity to flow.



Melbourne Warehouse Conversion



- 1 Eco Plywood / kitchen bench
- 2. Concrete floor and kitchen island
- 3. Recycled messmate / stairs
- 4 Porcelain tile / bathroom
- 5. Grey and white side table
- 6. Vitra Polder Sofa



Melbourne Warehouse Conversion



1.

Nature and Comfort

Close to the vertical vegetable garden and equipped with great technology, the kitchen will emphasize the connection between the interior and exterior, the nature and the city. The rounded kitchen island built from concrete with a Venetian rendered finish and a thick piece of plywood will accentuate the simplicity of the warehouse. A chandelier will be hanging over the kitchen island to show clearly that the kitchen is not separate from the living area. A bulkhead has been built over the overhead cabinets to accommodate task lights in the cooking area and to complete the line neatly with the mezzanine concrete slab. The colours, like the rest of the warehouse are white and timber. The focal point will be the glass splash back with a bamboo stick film printed on the rear, creating an interesting pattern that again performs as a connection



2.



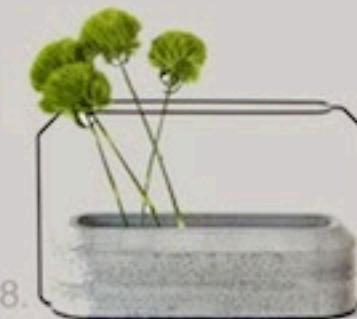
3.



4.

5.

6.



8.

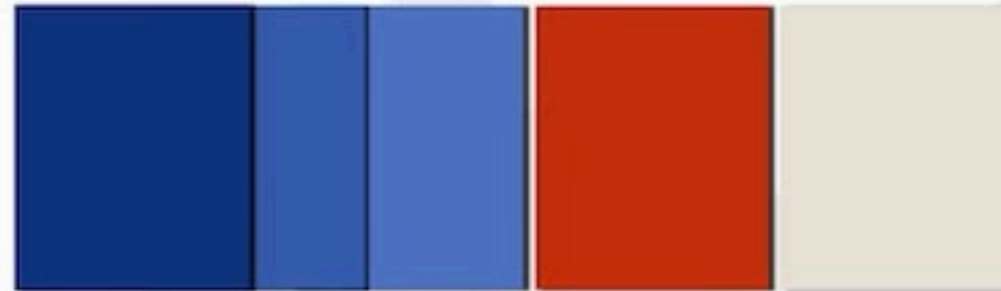
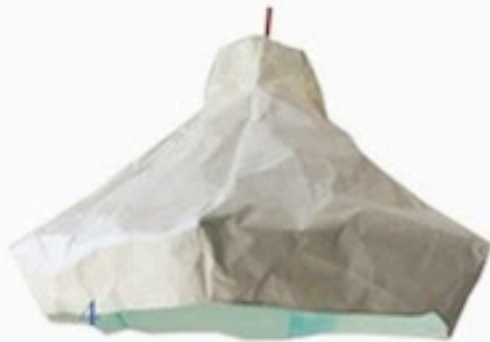


7.

1. Vertical garden
2. Splashback
3. Felt pods by Flip & Tumble
4. Recycled Messmate
5. Peblum quarter Dulux
6. Greeneray
7. Barstools Petite
8. Vases D. Archjananun



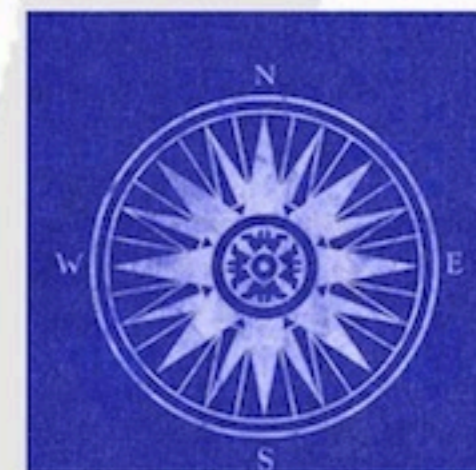
AHOY, CAPTAIN CASPER !



1. 'Fishing light' *Ebay*
2. Pouf *Urban Outfitters*
3. Table *Tressel Table & Co*
4. Lamp *Meirav Barzilay*
5. Colour Scheme
6. *Maha* Fabric
7. *Viva* Fabric
8. *Lux* Fabric



AHOY, CAPTAIN CASPER !



1. *Bed Quilt*
2. *Harvest Stripes Couch*
3. *Belle Ile Cushion*
4. *Belford Throw*
5. *Felt Bedhead*
6. *Antique Paisley cushion*
7. + 8 *Wall murals*





Matthias Sauerbruch

HUMAN

LUDWIG MIES

